

Brightech Jaxon Tripod Floor Lamp

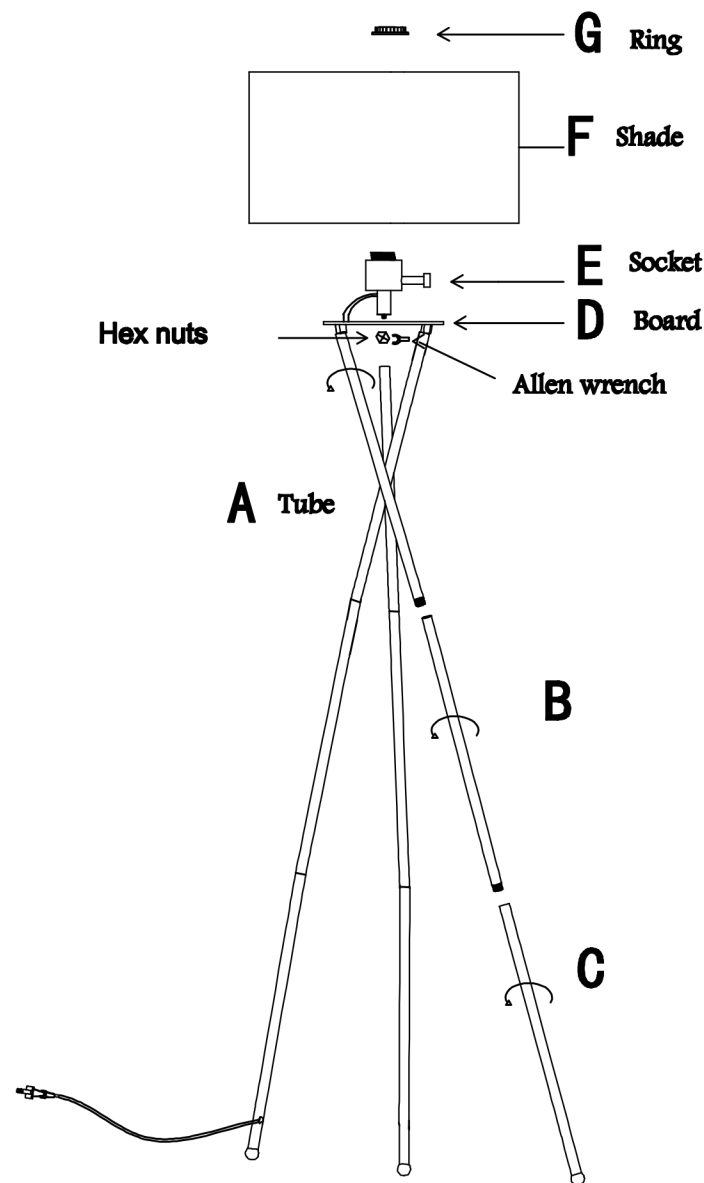
Assembly Instructions

- 1- Attach socket (E) to metal board (D) with hex screws and Allen wrench provided.
- 2. For each leg, screw tube (A) to board (D), and then attach tubes (B) and (C) to complete the legs.
- 3. Assemble shade (F) following instructions in the attached shade instructions sheet and secure it into place using ring (G) (ring (G) may need to be removed from socket (E) first).

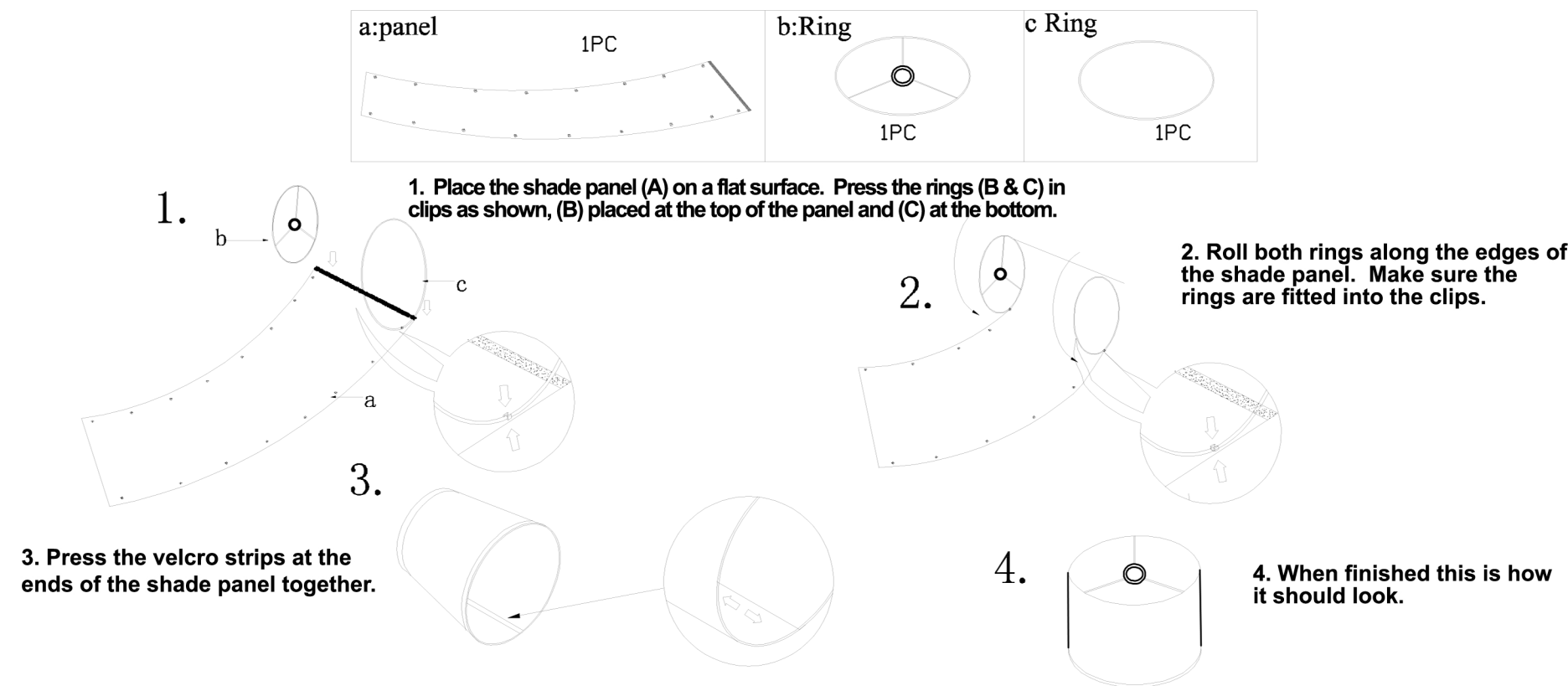
GENERAL PRODUCT INFORMATION:

This product is suitable for dry locations only.

This portable lamp has a polarized plug as a safety feature, to reduce the risk of electric shock (one blade is larger than the other). This plug will only fit in a polarized outlet in one direction. If the plug does not fully fit in the outlet, please turn it over. If it still doesn't fit, contact a qualified electrician. Do not use with an extension cord unless the plug can be fully inserted. **DO NOT ALTER THE PLUG.**



Shade Assembly instructions



Thank you for purchasing this Brightech product.
If you have any questions or concerns please do not hesitate to contact us.

brightech®
www.brightechshop.com
wecare@brightechshop.com