



Tahoe®
Under-mount Bathroom Sink
K-2890-4U

Features

- KOHLER cast iron.
- Under-mount.
- Rectangular basin.
- With overflow.
- Can accommodate single-hole center-mount.
- 4-inch centers.
- 16" (406 mm) x 12" (305 mm)

Recommended Accessories

K-8998 P-Trap

Components

Additional included component/s: Basin clamp accessory.



ADA

Codes/Standards

ASME A112.19.1/CSA B45.2

ADA

ICC/ANSI A117.1




**KOHLER® Lifetime Limited Warranty
for Cast Iron Components**

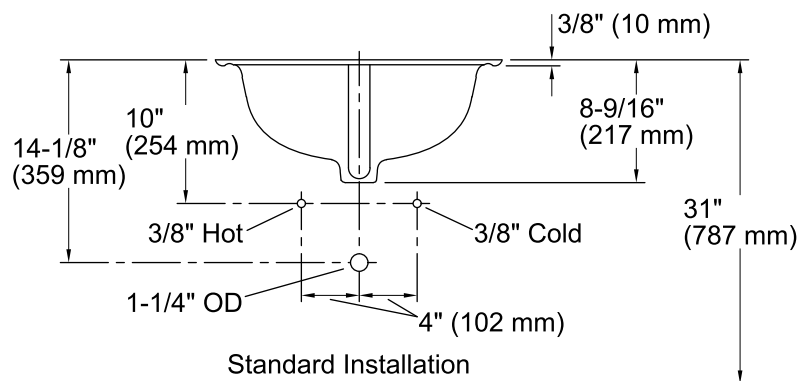
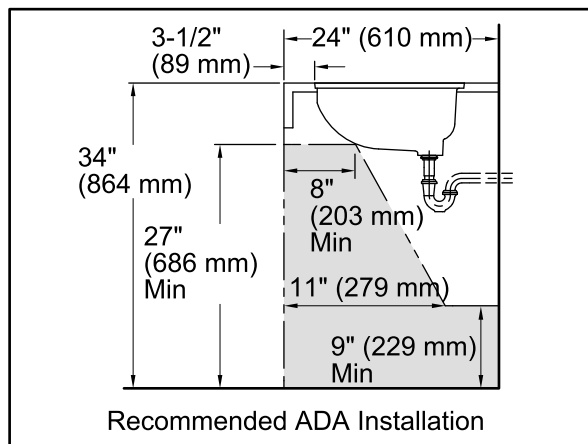
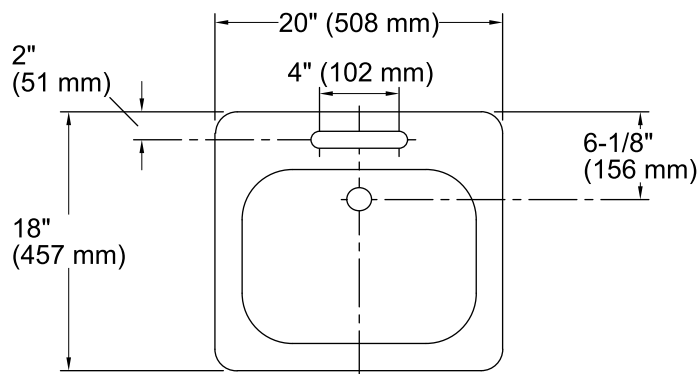
See website for detailed warranty information.

Available Color/Finishes

Color tiles intended for reference only.

Color Code Description

	0	White
	96	Biscuit
	47	Almond



Technical Information

All product dimensions are nominal.

Bowl configuration: Single

Installation: Under-mount

Bowl area (Only): Length: 16" (406 mm)
Width: 12" (305 mm)
Water depth: 5" (127 mm)

Number of deck holes: 3

Faucet hole(s): 2-1/8" (54 mm)

Drain hole: 1-11/16" (43 mm)

Template: Under-mount, 114409-7, required, included

Notes

Install this product according to the installation guide.

ADA compliant when installed to the specific requirements of these regulations.