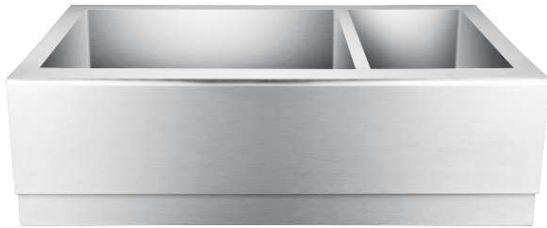


## 33" CAPRICE DOUBLE BOWL FARMER SINK

Cat. No  
FSSDB2508-SS



W: 33"  
D: 20"  
H: 10"

**\*Please do NOT cut hole without  
template or actual product.**

### Interior Dimensions:

#### Large

Basin Interior: 20" W x 16" D  
Basin Depth: 9-1/2"

#### Small

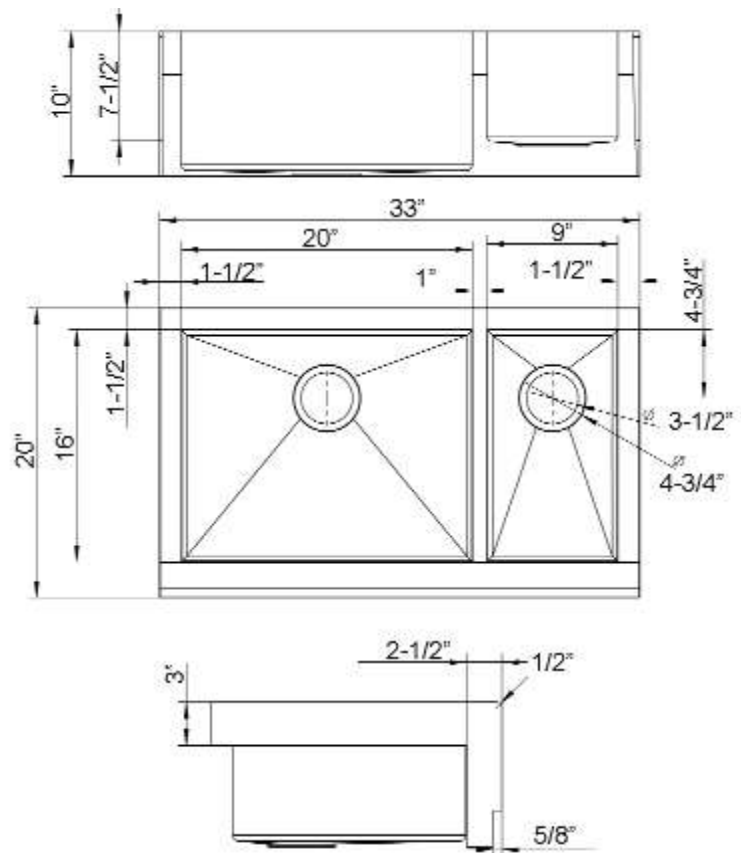
Basin Interior: 9" W x 16" D  
Basin Depth: 8"

### Features:

- ▶ Solid 16 gauge, 304 grade metal construction
- ▶ Zero radius corners
- ▶ Easy maintenance with matte finish
- ▶ Insulated for sound reduction
- ▶ Rim width is 1-1/2"
- ▶ Drain is 3-1/2"
- ▶ 70/30 offset
- ▶ Wire grid available to purchase separately,

**FSSDB2508-WIRE**

**Compliance Certification**  
Meets or exceeds the following  
specifications: ASME  
A112.19.3-2001 for Stainless Steel.



Dimensions of fixture are nominal and may vary within the range of tolerances established by ANSI Standard A112.19.2. Dimensions and specifications subject to change without notice.