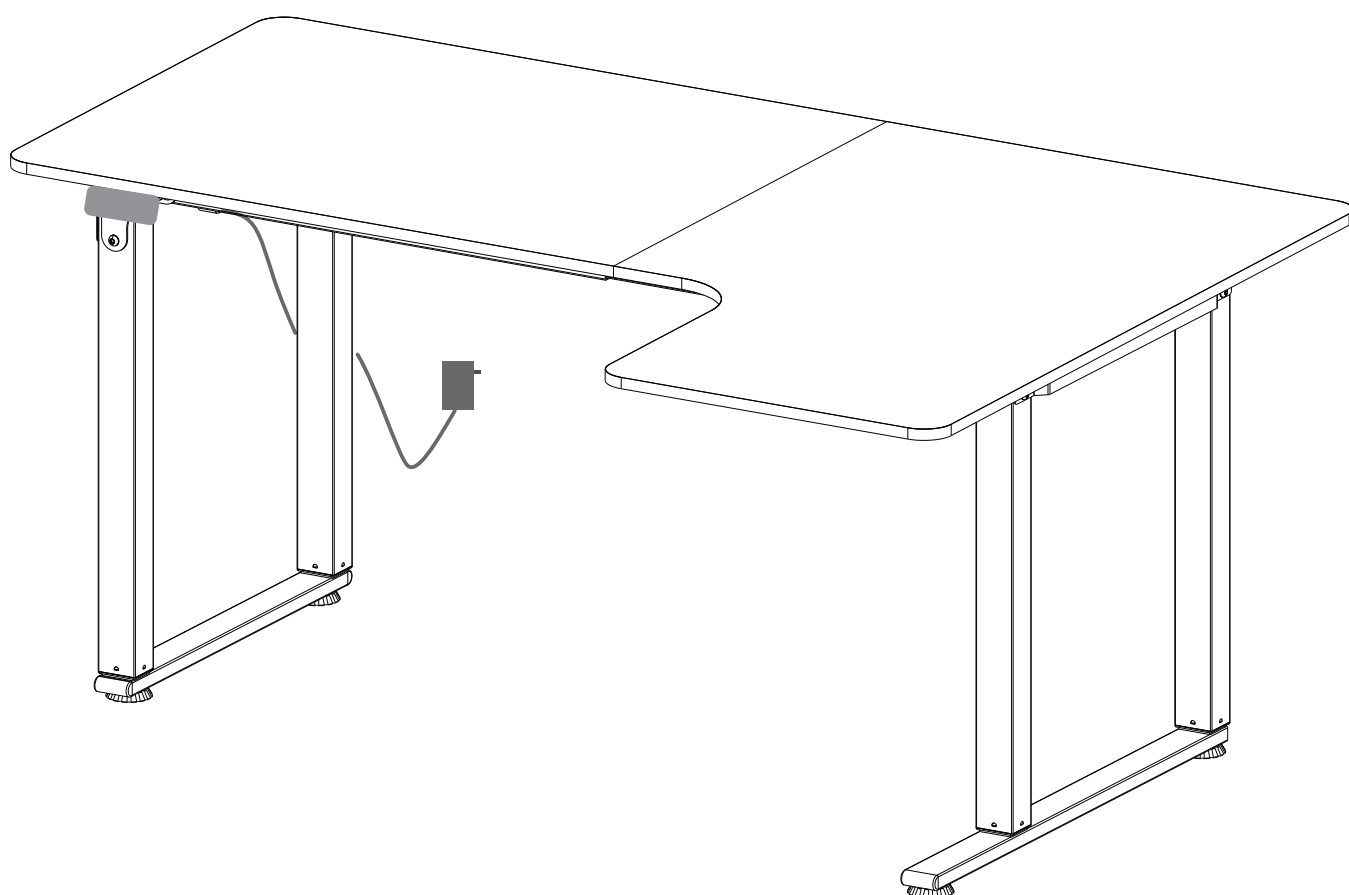


Electric Height Adjustable Standing Desk

Assembly Instruction



INTRODUCTION

Thank you for purchasing our products. Please read the instructions carefully before installation and keep it in a safe place for future reference. If you need any assistance or support, please feel free to contact our customer support team.

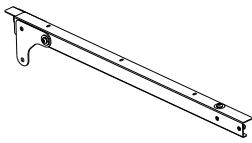
PRECAUTIONS

1. There are many components and accessories in the package. Keep them away from children to prevent accidents.
2. Please install the product on a clean and soft underlay (such as carpet or cardboard) to avoid scratching or damaging the surface of the product.
3. The main components of the product are relatively heavy. Please pay attention to safety during installation.
4. The product is not stable during installation. Please do not move it randomly before it is completely installed.
5. If you have any questions during installation, please contact the customer service on time.

*** PLEASE BE SURE TO FOLLOW THE INSTALLATION STEPS IN THE MANUAL TO AVOID UNNECESSARY LOSSES CAUSED BY IMPROPER INSTALLATION.**

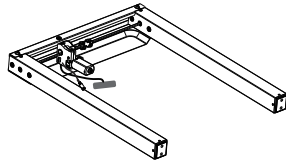
*** IF YOU NEED FURTHER ASSISTANCE, PLEASE CONTACT THE CUSTOMER SERVICE ONLINE.**

Parts List



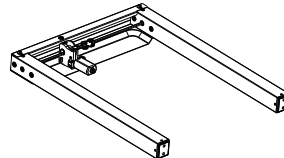
A

X2



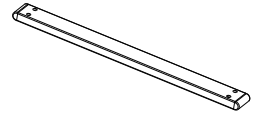
B

X1



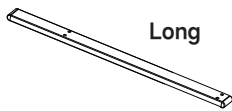
C

X1



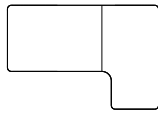
D

X1



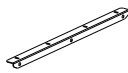
E

X1



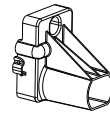
F

X1



G

X1



H

X2



I

X1



J

X1



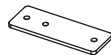
S1

X16



S2

X28



S3

X3



S4

X4



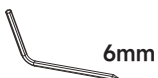
S5

X3



S6

X1



S7

X1



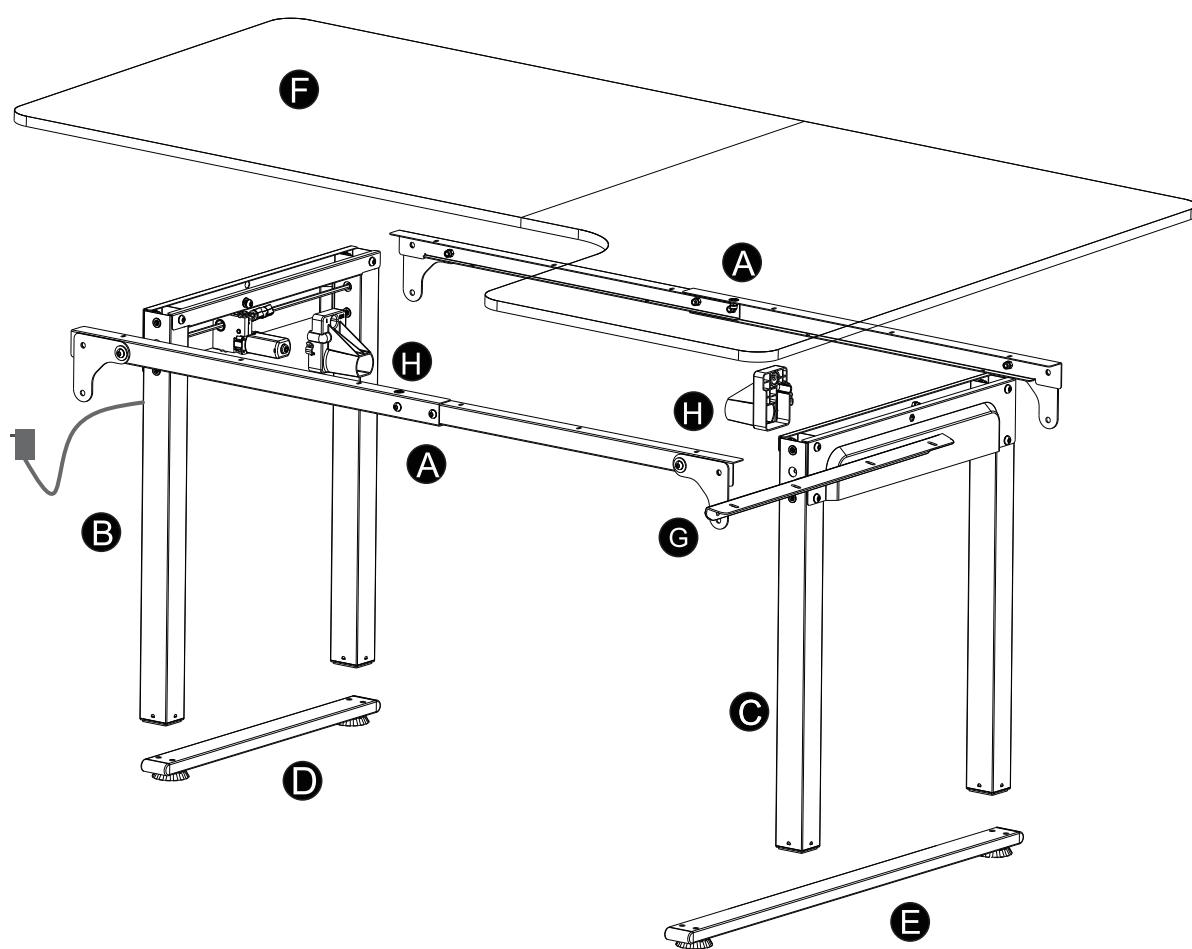
S8

X8



S9

X4



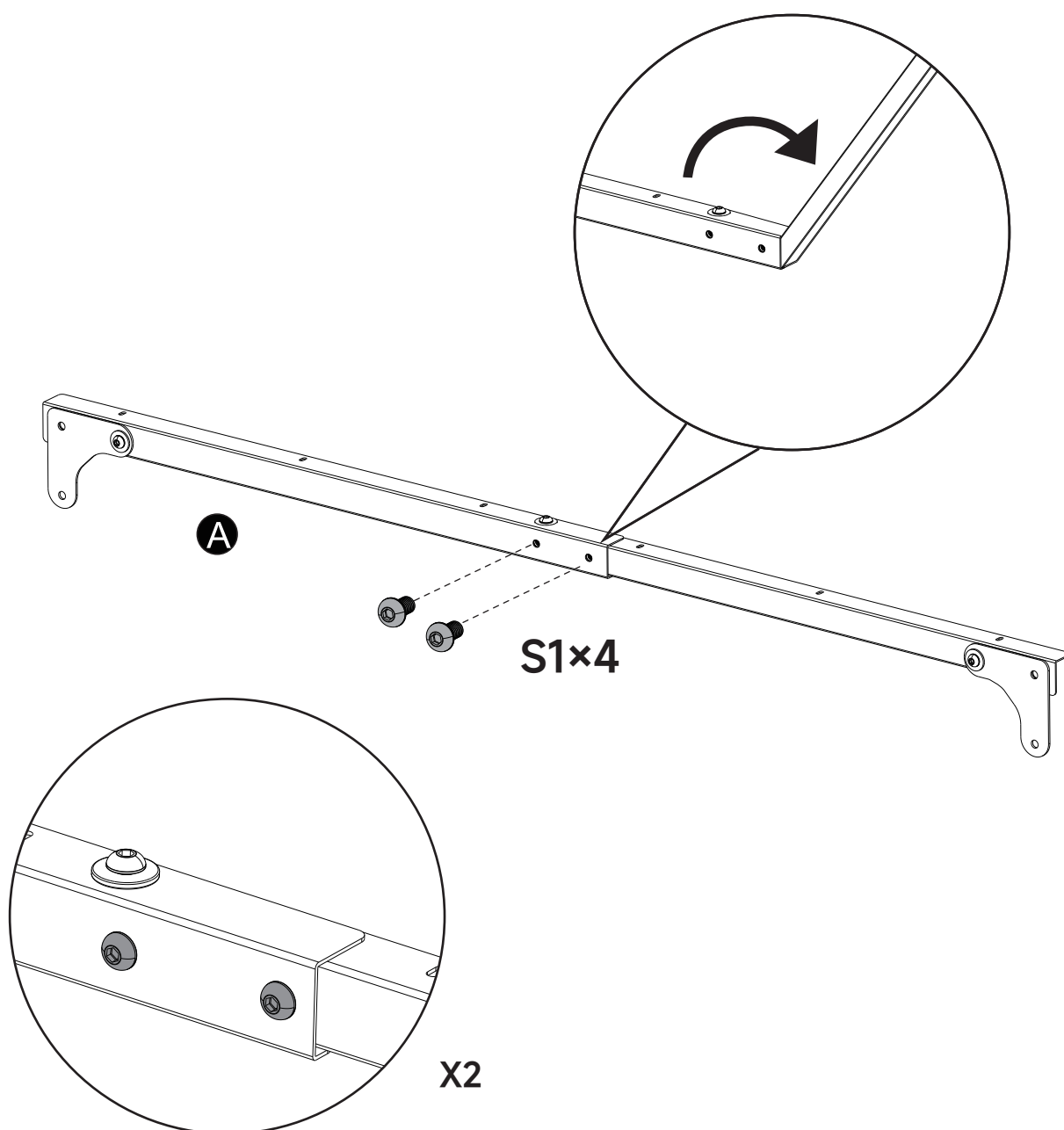
STEP 1



S1 X4



S7 X1



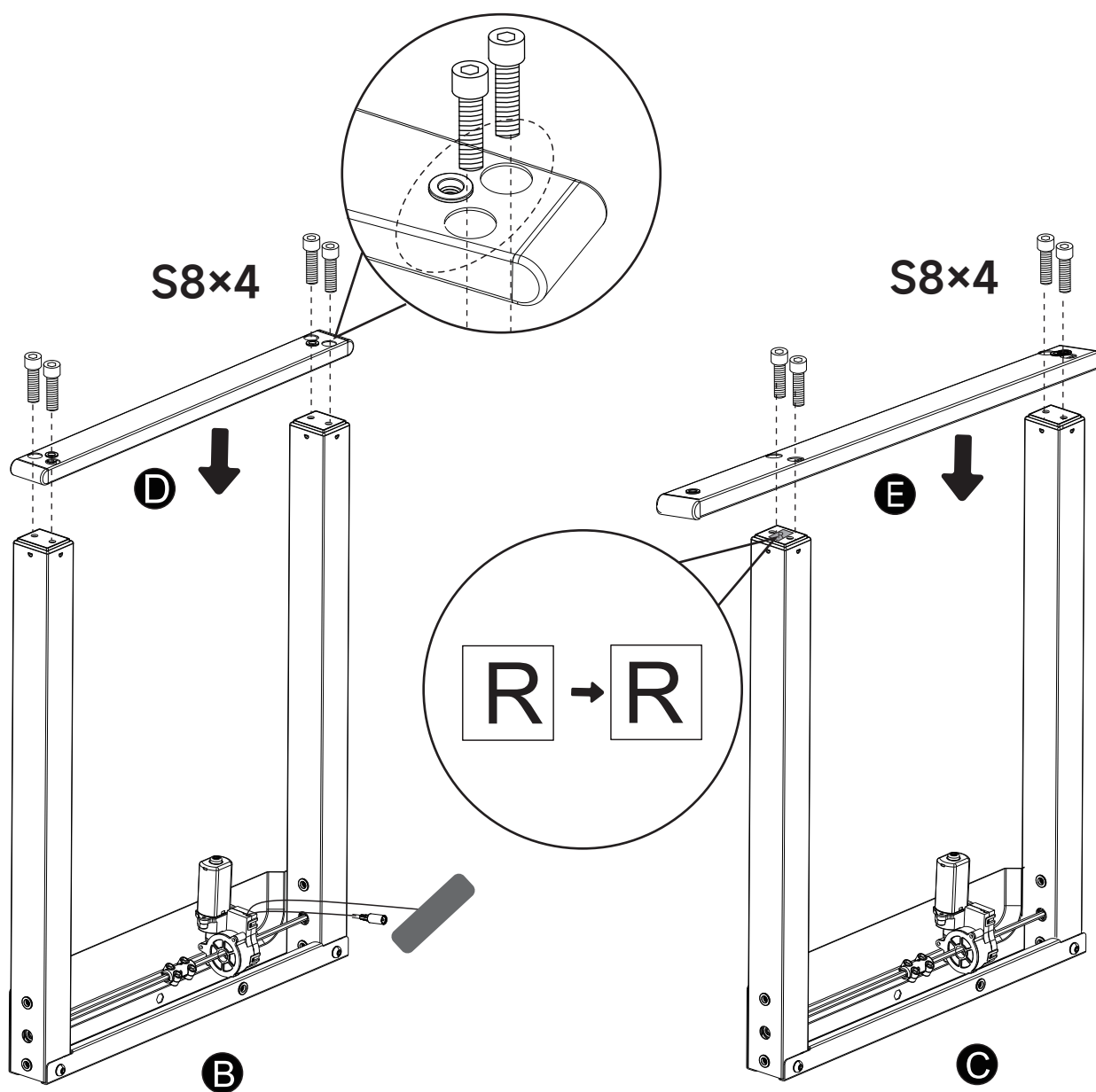
STEP 2



S8 X8



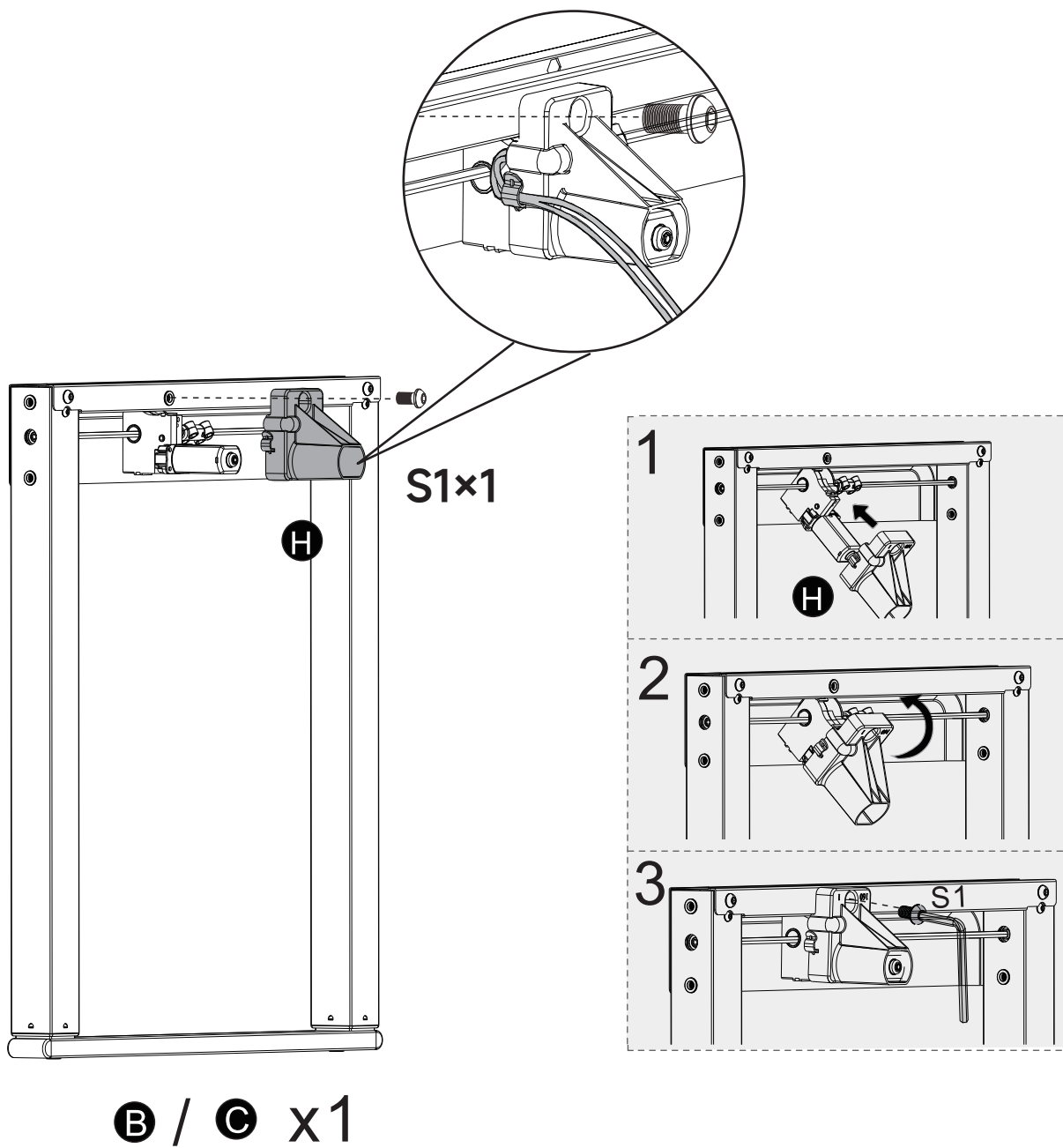
S7 X1



STEP 3

 **S1** X2

 **S7** X1

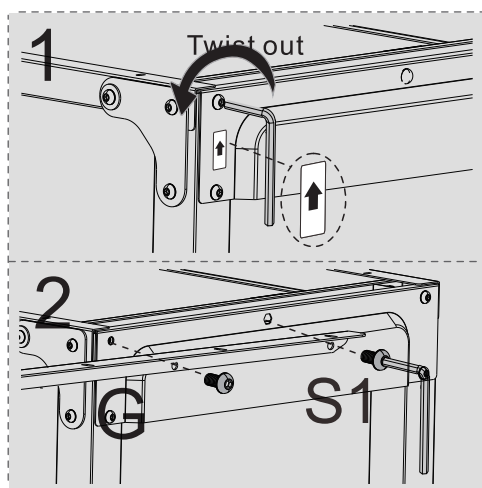
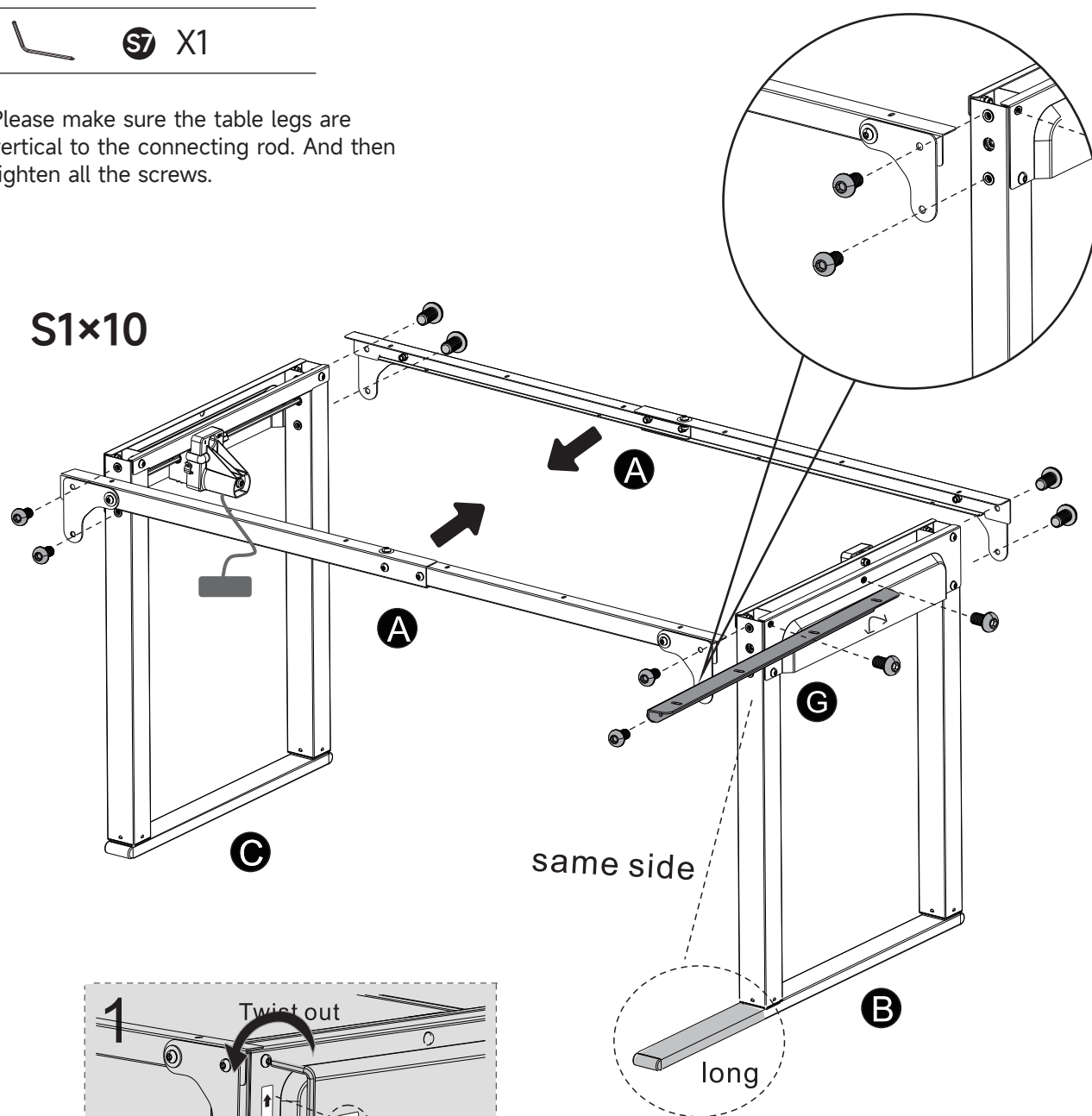


STEP 4

 **S1** X10

 **S7** X1

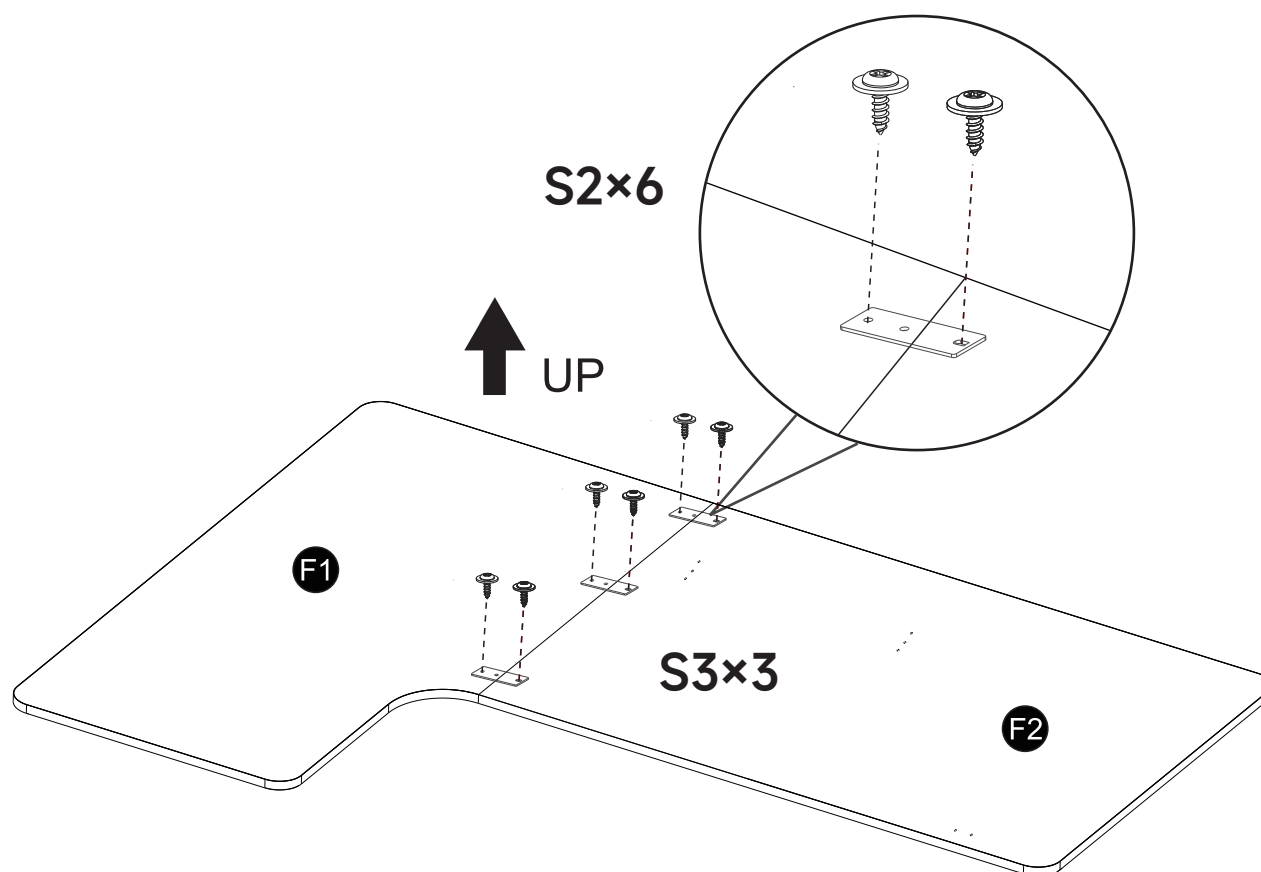
Please make sure the table legs are vertical to the connecting rod. And then tighten all the screws.



STEP 5

**S2** X6**S3** X3**S7** X1

1. Please make sure the two boards are aligned and seamless.
2. And then tighten the screws.



STEP 6



S2 X22



S4 X4



S5 X3



S7 X1



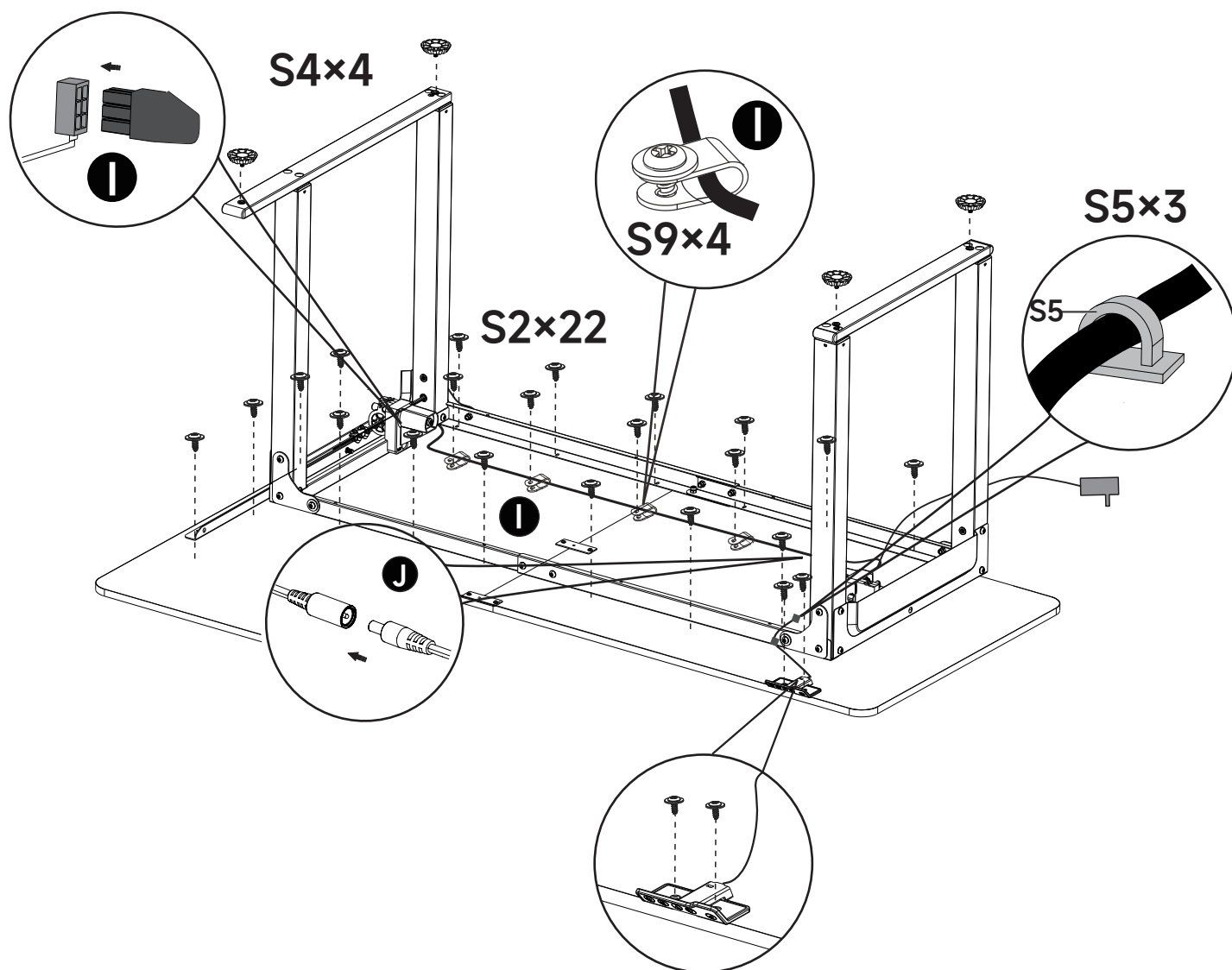
S9 X4



I X1



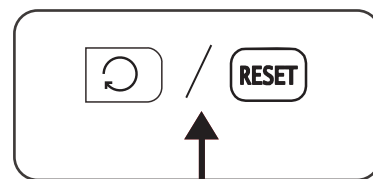
J X1





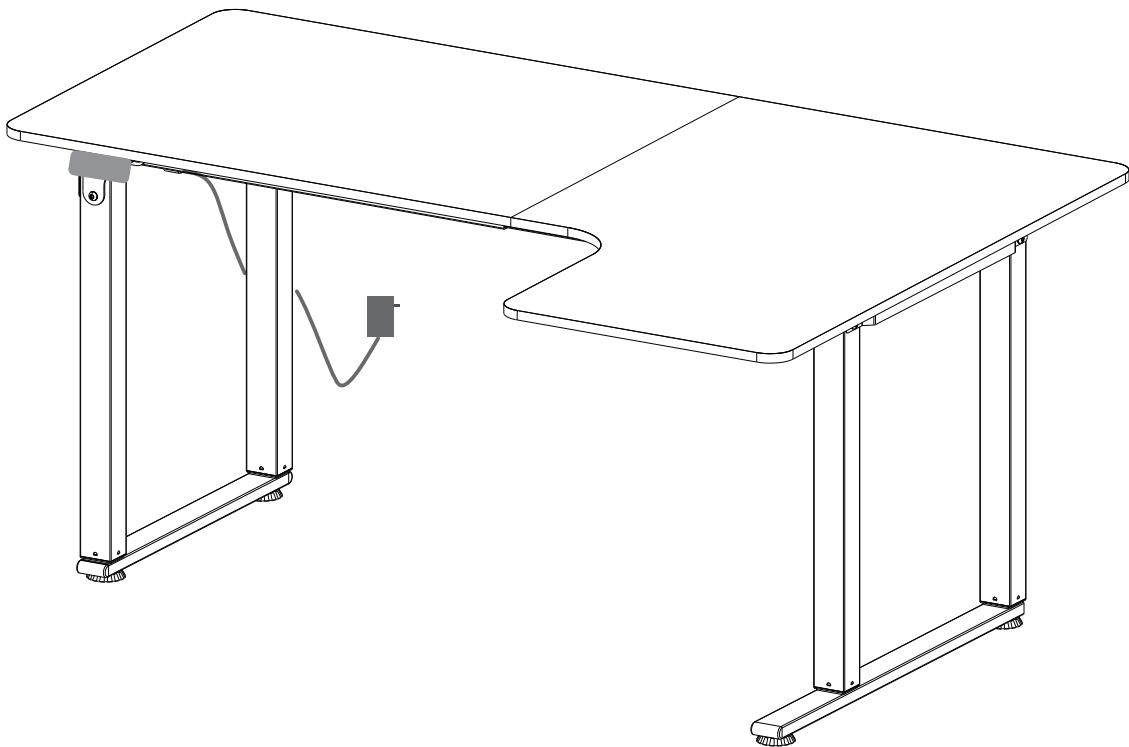
STEP 7

The table will automatically drop to the lowest point, stay for 5 seconds, then rise to the highest point, and finally return to the initial position.

-successful installation



After the table is installed,
please press the   key to start



INSTRUCTION MANUAL



Up: Up button



RST: Reset button



Stand: Saving button 1









Down: Down button







Sit: Saving button 2



UP AND DOWN BUTTON OPERATION

- * When the "" button is pressed, the desktop runs up until reaching the highest height.
- * When the "" button is pressed, the desktop runs down until it reaches the lowest height.
- * When press the "" or "" button, the desktop runs automatically.
- * When press the "" button 3S, release the button, automatically reach the highest height, press any button can stop halfway.
- * When press the "" button 3S, release the button, automatically reach the highest height, press any button can stop halfway.

LOCATION STORE/MEMORY LOCATION OPERATION

- * Storage of standing position: press and hold "" button for 5 seconds, and the standing position is saved.
- * Storage of sitting position: press and hold "" button for 5 seconds, and the sitting position is saved.
- * Stand memory position operation: press the "" button, the desktop automatically runs to the height of the memory position, and press any button can stop halfway.
- * Sitting memory position operation: press the "" button, the desktop automatically runs to the height of the memory position, and press any button can stop halfway.

RESET OPERATION

- * Press and hold " / " for 5 seconds, The table will automatically drop to the lowest point, stay for 5 seconds, then rise to the highest point, and finally return to the initial position.

After the assembly of desk, please execute this process first.