

NOTES:

- 1. GLAZING:** As shown in diagram **A1**.
- 2. COLUMNS AND BEAMS:** Columns connects to floor and ceiling with a flange. Make sure the flange is level, use shims if necessary. Screw the flange directly to the concrete floor/ceiling with concrete anchor bolts (not provided). Tighten the hex nuts to secure the flange. Installer needs to cut out a notch in the column at the top and bottom to install with flanges. See TSDC "Recommended Mounting Hardware" (below) for screw types and sizes. Beams attach to columns and existing walls with an L-Connector. See installation instructions and hardware guide for recommended screw types.
- 3. FIXED PANEL BASE SUPPORTS:** Secure to Header, Columns, and Floor using screws. (See "Reccommended Screw Types - screws not provided). Secure panel using screws #8 x 1-1/2" Pan Head Sheet Metal screws. (18" max. span between screws).
- 4. H-TRIM EXTRUSION:** Holds and prevents light from filtering through the gap between panels.

SYSTEM DETAILS:

SYSTEM TYPE:

- FIXED PANEL

RAIL/STILE TYPE:

- 1-1/2" ALUMINUM

FINISH:

- BLACK

GLASS TYPE:

- 5MM TEMPERED COMMERCIAL FROSTED FILM

DESIGN:

- SOLO

ACCESSORIES:

- NO ACCESSORIES

OPENING	PAGE
GENERAL NOTES	1
PANEL GLAZING, A1	2
PLAN OVERVIEW, ISOMETRIC	3
SYSTEM SECTIONS, S1	4
SYSTEM DETAILS, D1	4
E1	5



Elevation / Detail Number
Page Number

Fixed Panel Systems Only

Recommended Mounting Hardware: *(Hardware provided by installer)*

Note: Hardware must penetrate structural material 1- 1/2" minimum.

A. Securing to Metal or Wood:

- #8x1-1/2" Pan head Sheet Metal screw (with minimum pull-out force of 200lbs).

B. Securing to Wood:

- #8x1-1/2" Pan head Sheet Metal screws.

C. Securing to Concrete:

- Concrete plastic anchor plug for #10x1" screw; #10x1" Phillips Head machine screw (with rating minimum 800lbs ultimate pull-out).



PROPRIETARY NOTICE: THE INFORMATION CONTAINED HEREIN IS THE SOLE PROPERTY OF THE SLIDING DOOR COMPANY. ANY REPRODUCTION IN WHOLE OR IN PART WITHOUT THE EXPRESSED WRITTEN PERMISSION OF THE SLIDING DOOR COMPANY IS STRICTLY PROHIBITED.

CUSTOMER APPROVAL: I HEREBY CONFIRM THAT I HAVE REVIEWED THE DESIGNS AND DIMENSIONS IN THIS DRAWING PACKAGE AND CONFIRM THAT THEY ARE IN AGREEMENT WITH THE DIMENSIONS AT THE JOBSITE FOR TOLERANCE AND CLEARANCE, I ALSO UNDERSTAND THAT IT IS THE SOLE RESPONSIBILITY OF THE CUSTOMER/CONTRACTOR TO CHECK THEIR CITY/ STATE BUILDING CODES TO ENSURE COMPLIANCE WITH TSDC PRODUCTS.

CUSTOMER NAME

SIGNATURE

DATE APPROVED

TITLE

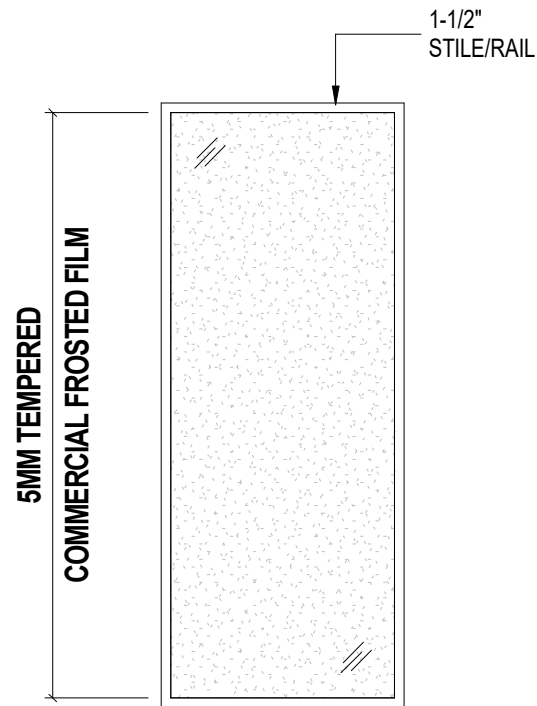
WAYFAIR
GENERAL NOTES

ORDER #:

QTY: 1

SHEET 1 OF 5

	NAME	DATE
DRAWN BY	NN	05/11/22
REVISION		
SALES REP	Gil Ben-Zion	
DO NOT SCALE		



A1 TYPICAL PANEL GLAZING
NOTE 1 - E1 (FP PANEL)

SEE SHEET 1

TITLE:

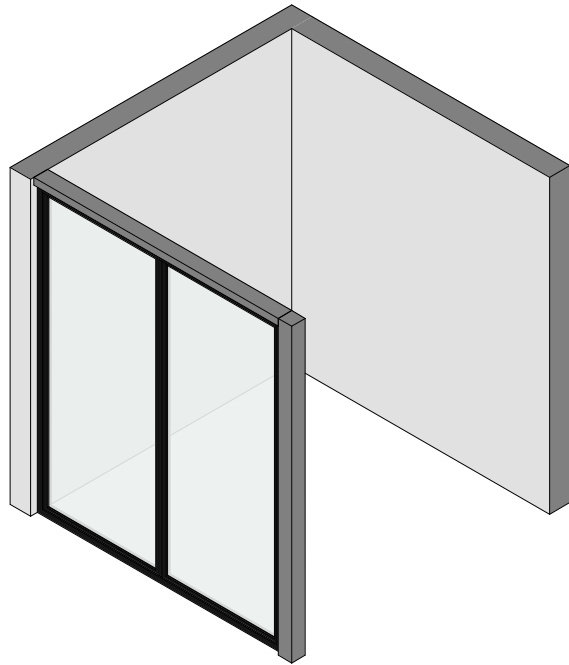
WAYFAIR
PANEL GLAZING

ORDER #:

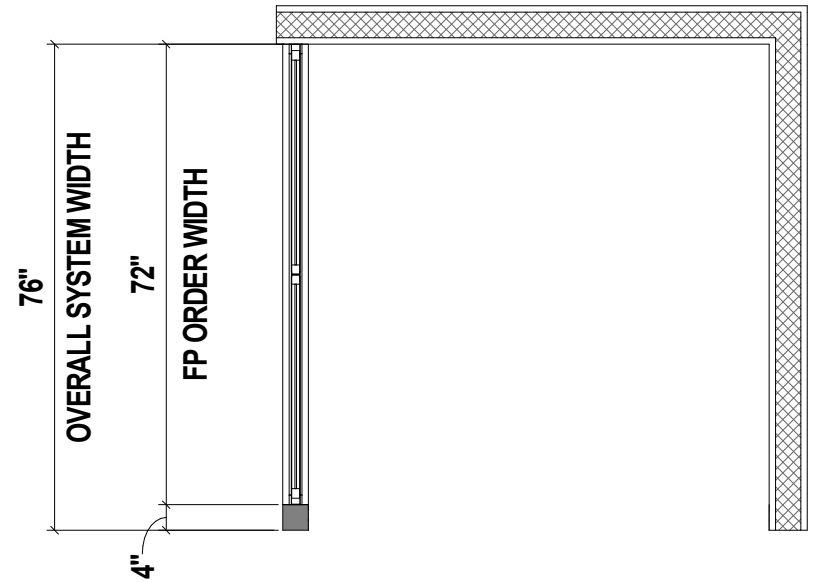
INITIALS:

DO NOT SCALE

SHEET 2 OF 5



5 E1



V1
PARTITION
ISOMETRIC: Scale None
DETAIL - E1 (FP)

SEE SHEET 1

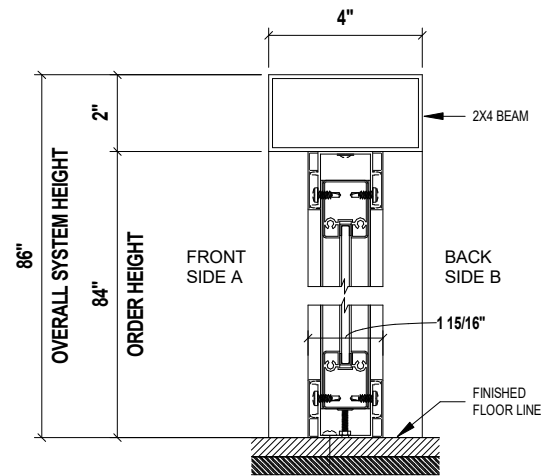
TITLE: **WAYFAIR
PLAN OVERVIEW AND ISOMETRIC**

ORDER #:

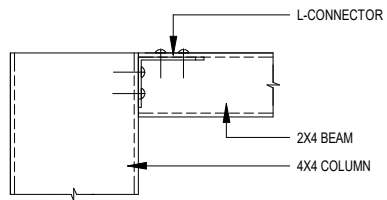
INITIALS:

DO NOT SCALE

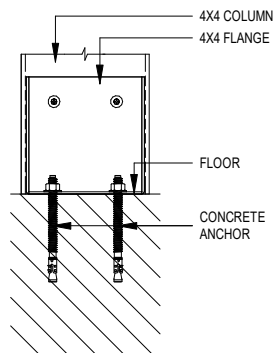
SHEET 3 OF 5



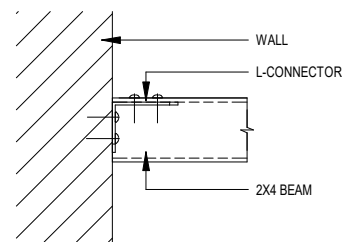
S1 FIXED PANEL TO 2X4 BEAM
SECTION: Scale None
DETAIL - E1 (FP)



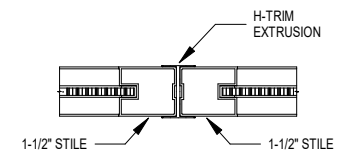
D1 4X4 COLUMN TO 2X4 BEAM
ATTACHMENT DETAIL: Scale None
DETAIL - NOTE 2



D2 4X4 COLUMN TO FLOOR
ATTACHMENT DETAIL: Scale None
DETAIL - NOTE 2



D3 2X4 BEAM TO WALL
ATTACHMENT DETAIL: Scale None
DETAIL - NOTE 2



D4 H-TRIM EXTRUSION
DETAIL: Scale None
DETAIL - NOTE 4

SEE SHEET 1

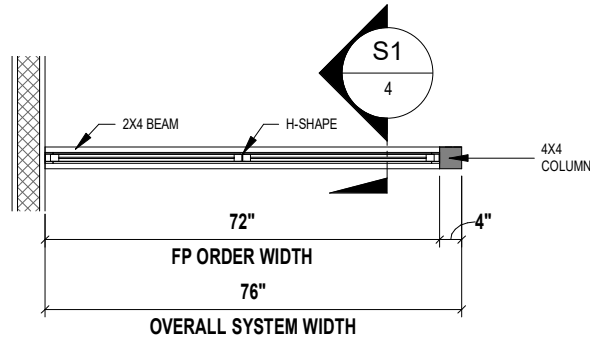
TITLE: **WAYFAIR
SYSTEM SECTION AND DETAILS**

ORDER #:

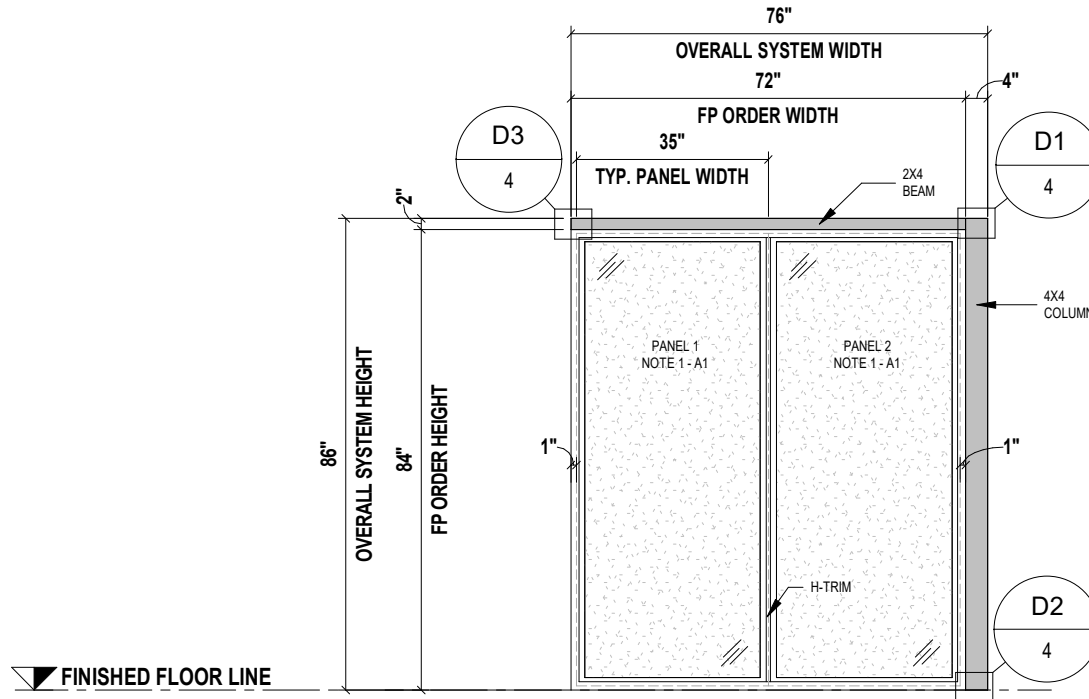
INITIALS:

DO NOT SCALE

SHEET 4 OF 5



OPENING 1 - PARTITION - PLAN: Scale None



E1 - ELEVATION: Scale None

SEE SHEET 1



TITLE:

**WAYFAIR
SYSTEM DETAILS**

ORDER #:

INITIALS:

DO NOT SCALE

SHEET 5 OF 5