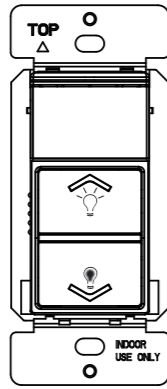


INSTALLATION INSTRUCTIONS

Model: TDODS5-120
Occupancy/Vacancy
Sensor & Dimmer



SPECIFICATIONS

Voltage.....	120VAC, 60Hz
Tungsten/ Incandescent.....	600W
Electronic self-ballasted (LED).....	150W(1.25A)
Operating temperature.....	32°F~104°F(0°C~40°C)
Wire Strip Length.....	16mm(5/8 in.)
Supply Connection	#14-#12 AWG
Screw Torque.....	.20lbf-in
Motion Sensor Coverage.....	180°, 700 sq.ft.

FEATURES

The TDODS5-120 is a motion sensor with a dimmer. This innovative design makes it the single most energy efficient controller ever! It's capable of dimming at very low levels and it can deliver the brightest light that your bulbs are capable of handling. When the room is unoccupied, the sensor will automatically turn the lights off. The TDODS5-120 can be switched between Vacancy and Occupancy modes and the sensor can be customized by adjusting the controls hidden under the dimmer buttons. **NEUTRAL WIRE IS NOT REQUIRED FOR TDODS5-120.**

WARNING

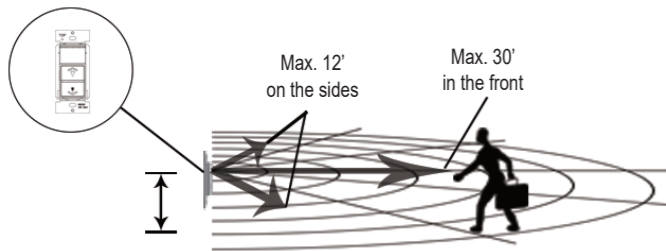
Turn the power off at the circuit breaker before installing the dimmer.

Read and understand these instructions before installing. This device is intended for installation in accordance with the National Electric Code and local regulations. It is recommended that a qualified electrician performs this installation. Make sure to turn off the circuit breaker or fuse(s) and make sure power is off before wiring the device.

Use copper wire only.

COVERAGE

As illustrated below, the TDODS5-120 has a 180° detection range with a maximum distance of 30' detection in front of the sensor and 12' on the sides. For Maximum results, the sensor must be properly installed between the height of 4' to 5' and away from obstructions such as walls, furniture and transparent barriers like Low-E glass.



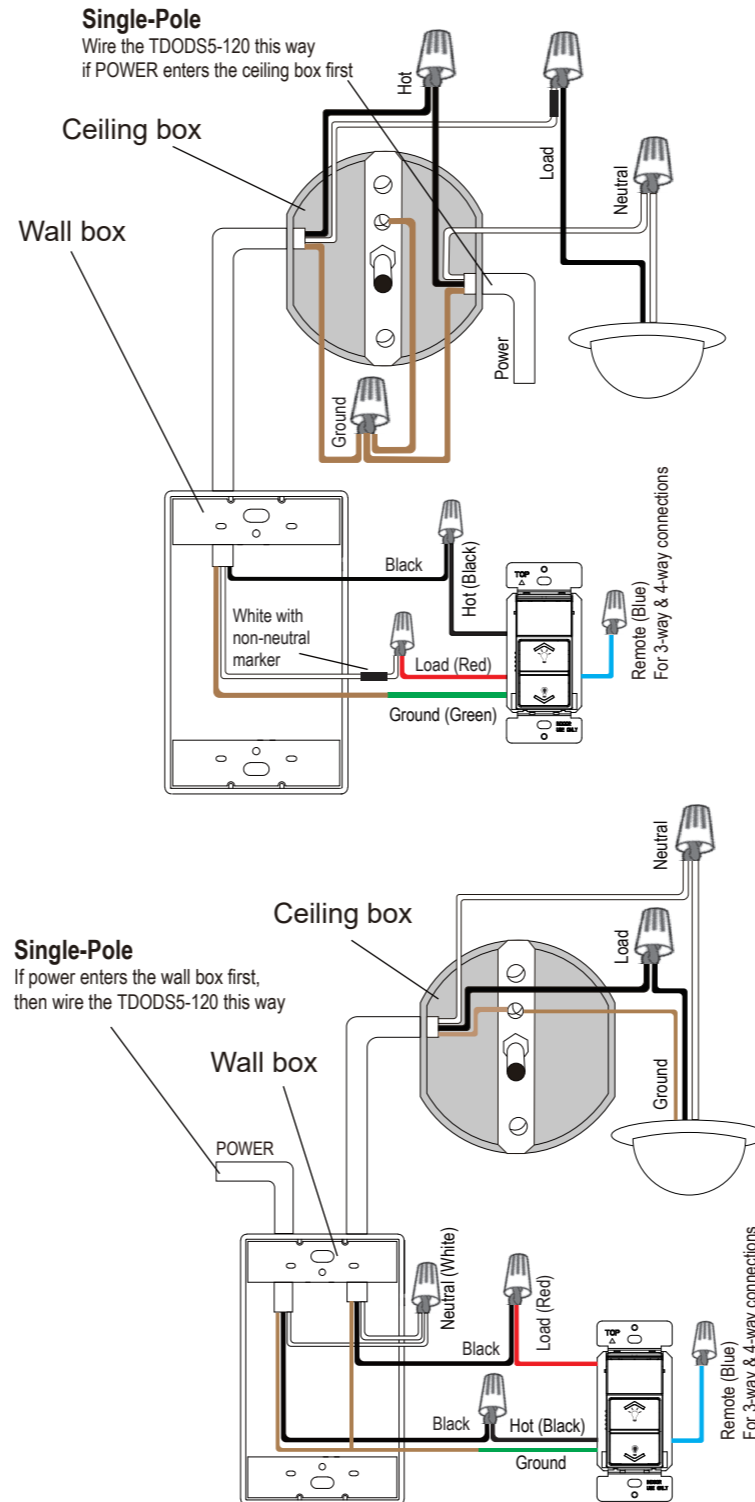
WARRANTY

This device is warranted to be free of material and workmanship defects for 1 year from the date of purchase. Original receipt or proof of purchase from an authorized retailer must be presented upon warranty claim. ALL claims must be verified and approved by Top Greener, Inc. Warranties from other TOPGREENER products may vary. This warranty is nontransferable and does not cover normal wear and tear or any malfunction, failure, or defect resulting from misuse, abuse, neglect, alteration, modification, or improper installation. To the fullest extent permitted by the applicable state law, Top Greener, Inc. shall not be liable to the purchaser or end user customer of TOPGREENER products for direct, indirect, incidental, or consequential damages even if Top Greener, Inc. has been advised of the possibility of such damages. Top Greener, Inc.'s total liability under this or any other warranty, express or implied, is limited to repair, replacement or refund. Repair, replacement or refund are the sole and exclusive remedies for breach of warranty or any other legal theory.

WIRING DIRECTIONS:

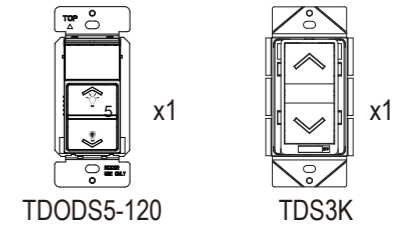
1. Remove the wall plate.
2. Remove existing switch from wall box and prior to disconnecting wires, identify the wires and label as needed.
3. Remove wires from existing switch.
4. Follow the diagram below to reconnect the TDODS5-120 sensor switch.

WARNING: The white wire you see in the wall box is not always the neutral wire. Verify whether the power enters the wall or ceiling box first. NEUTRAL WIRE IS NOT REQUIRED FOR TDODS5-120

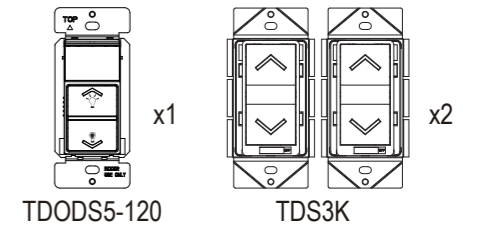


3-WAY AND 4-WAY WIRING

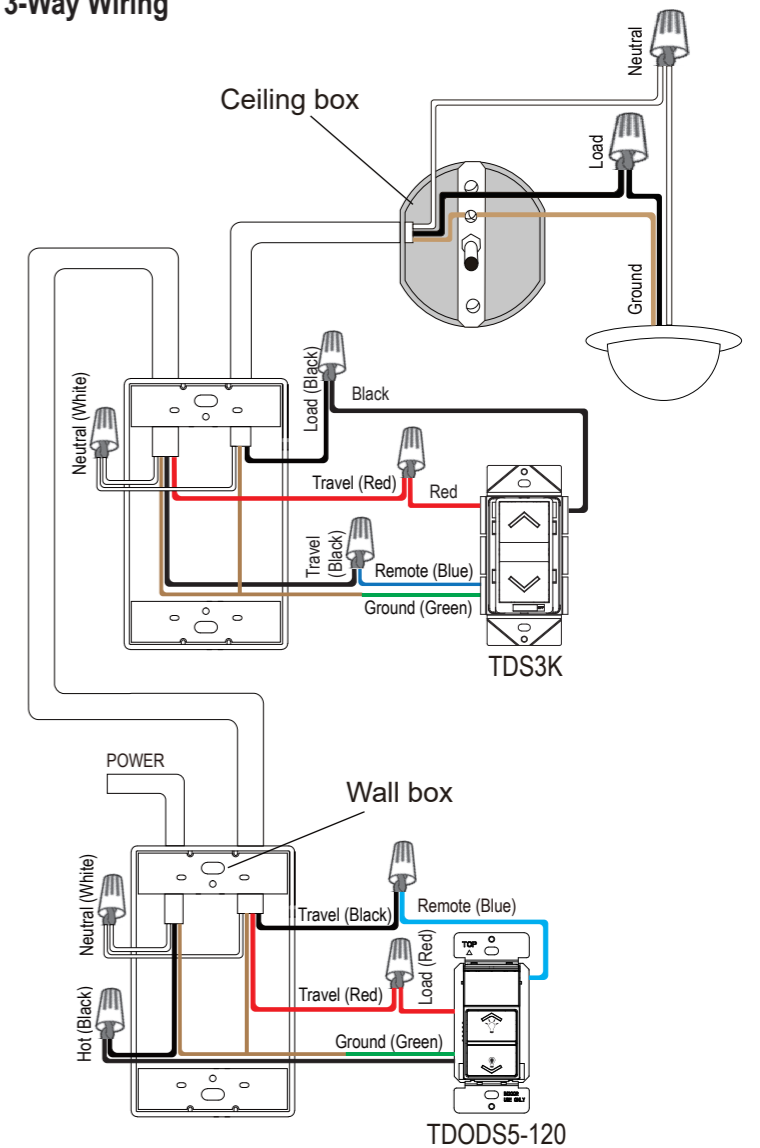
For 3-Way connections, you will need one TDODS5-120 and one TDS3K.



For 4-Way connections, you will need one TDODS5-120 and two or more TDS3K.



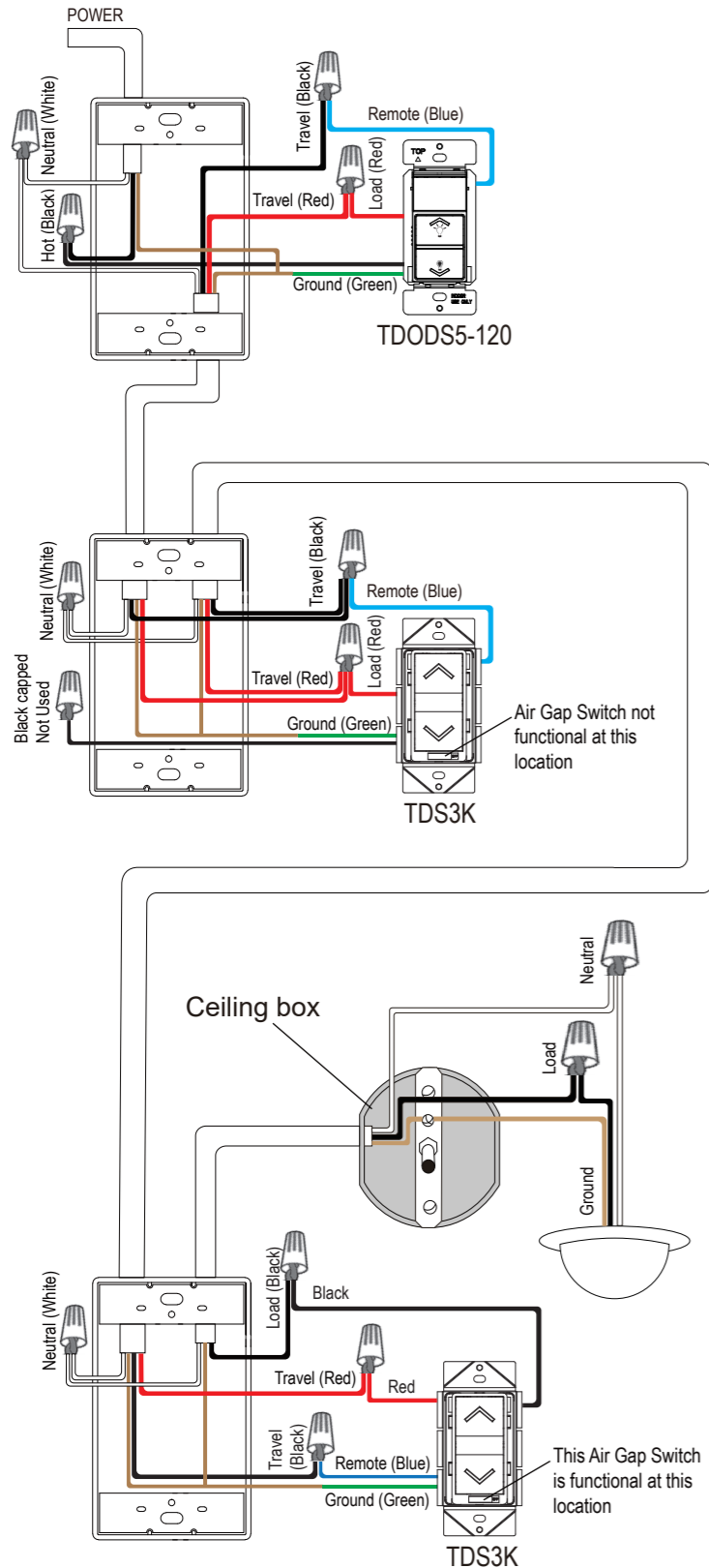
3-Way Wiring



TOPGREENER

© 2018 Top Greener, Inc. • CA, U.S.A. • WWW.TOPGREENER.COM • 0206200101-4

4-Way Wiring



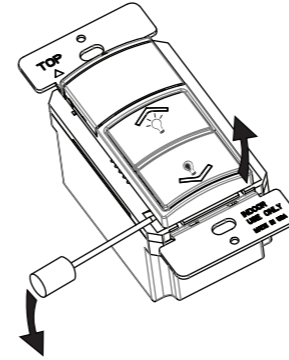
POWER UP AND TEST BEFORE WALLPLATE

Once you have completed the wiring, we recommend that you turn on the power, then test and adjust the settings to your desire before installing the wallplate. The adjustment dials are located under the face cover, which can be removed by prying the face cover off from the indents located at the bottom corner of the face covers. See diagram below.

OPEN CONTROL PANEL

Remove the cover to expose the control panel. Insert the tip of a flat screwdriver into the gap and pry the cover off.

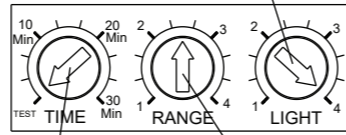
To reinstall, simply align the cover and snap back on.



Ambient Light Level Dial

Default position: Daylight (100% at position 4)
Adjustable: Daylight to 30Lux (Counter clockwise)

Note: Position 4 means that the sensor will turn the lights on even when the room is already bright.
Position 1 means the sensor will not turn the lights on until the brightness in the room drops to 30 lumens or below.

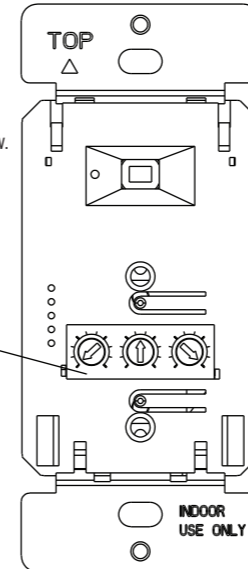


Time Delay Dial

Default position: 15 Seconds (Test mode)
Adjustable: from 15 Seconds to 30 Minutes (clockwise)

Range Dial (Sensor Sensitivity)

Default position: Center at 65%
Adjustable: 30% (Position 1) to 100% (Position 4)



OPERATING MODES

Occupancy (OCC) Mode (Default): Auto ON/ Auto OFF

The lights will automatically turn on when motion is detected by the PIR sensor and keep the lights on as long as motion is still detected. When motion is no longer detected, the device will start the countdown (Time Delay) and when time expires, the device will automatically turn the lights OFF.

Vacancy (VAC) Mode: Manual ON/ Auto OFF

The lights will not turn on automatically when motion is detected by the PIR sensor. The dimmer buttons must be used to turn the lights on. Once lights are on, motion detected by the PIR sensor will keep the lights on. When motion is no longer detected, the device will start the countdown (Time Delay) and when time expires, the device will automatically turn the lights OFF.

- Within 30 seconds of the lights automatically turning off, if motion is detected then the lights will turn on.

To switch between Occupancy mode and Vacancy mode

Occupancy mode is indicated by the LED indicator flashing RED when motion is detected. To switch between Vacancy and Occupancy modes, press and hold down both the UP and DOWN buttons for 5 seconds, until the LED indicator flashes TWO times for Vacancy mode and FOUR times for Occupancy mode.

Vacancy mode is indicated by the LED indicator flashing RED when motion is detected. To switch to Vacancy mode, press and hold down both the UP and DOWN buttons for 5 seconds, until the LED indicator flashes TWO times

Manual Control: Dimming and ON/OFF

- Turn ON the lights: Tap the UP button. The lights will turn ON to the last used brightness level.
- Turn OFF the lights: Tap the DOWN button. The lights will turn OFF completely and save the brightness level.
- Turn the brightness level UP (brighten): Hold down the UP button. The brightness level will gradually increase until button is released.
- Turn the brightness level DOWN (dim): Hold down the DOWN button. The brightness level will gradually decrease until button is released.

TROUBLESHOOTING

NOTE: There is a 3 minute warm-up time at initial power-up. The load may turn on/off several times during the warm-up.

The Load does not turn On when a person walks in the room:

1. Make sure power is turned on at the panel.
2. Make sure a GFCI switch nearby or at the panel is not tripped.
3. Push Manual On/Off Button: if the load turns on, then reset the Ambient Light Level.
4. Check the wiring connection for loose wire cap.
5. Switch may be in VACancy mode. Switch it to Occupancy mode if auto on (always) is the desired operation.

The Load does not turn Off:

1. Motion may be detected. The time delay constantly restarts its countdown after the last motion detected. To verify proper operation, turn the Time Delay Knob to 15s (Test Mode) and make sure there is no motion (no LED flashing). Tape may be used to cover the fresnel lens while testing.
2. Check for significant heat source emitting within six feet (two meters) such as high wattage light bulb, portable heaters or HAVC vents.
3. Check the wiring. Make sure the HOT and LOAD wires aren't reversed.

The Load turns on when its not desired:

1. Motion may be detected. The time delay constantly restarts its countdown after the last motion detected. To verify proper operation, turn the Time Delay Knob to 15s (Test Mode) and make sure there is no motion (no LED flashing). Tape may be used to cover the fresnel lens while testing.
2. Check for significant heat source emitting within six feet (two meters) such as high wattage light bulb, portable heaters or HAVC vents.
3. If Manual operation of push-button is desired, select VAC mode on the Mode Switch.