

Pure & Easy



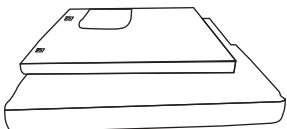
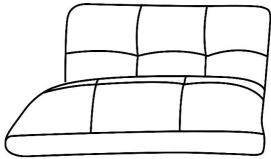

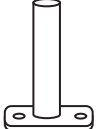
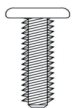

# **ASSEMBLY INSTRUCTIONS**

FTLFSF-6054

FTLFSF-6055

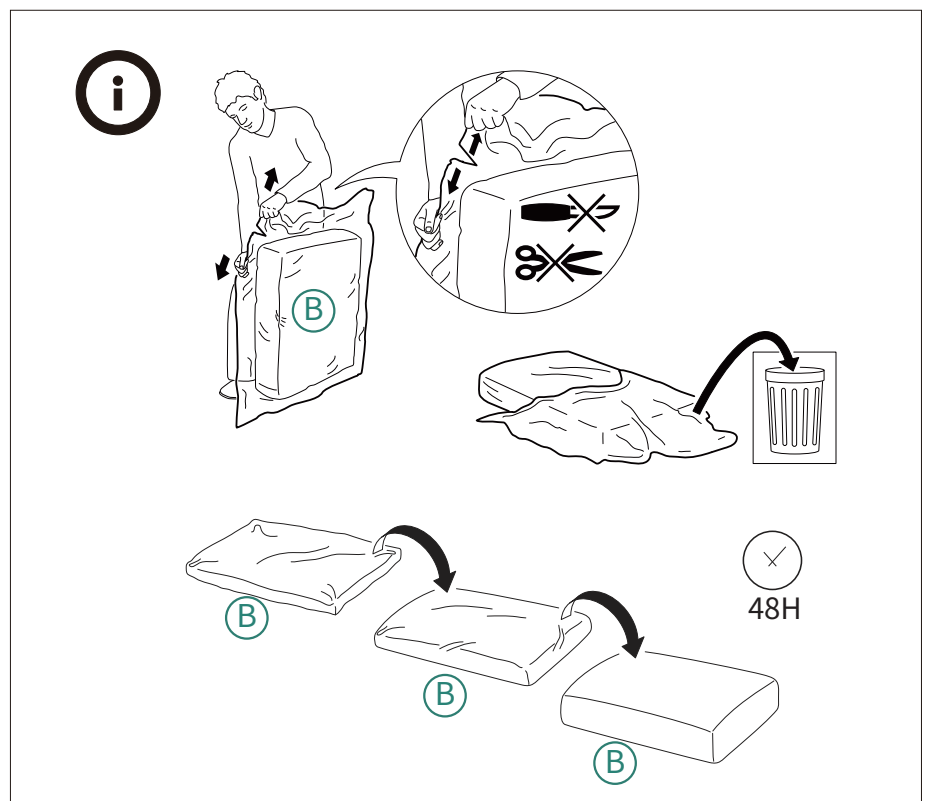
AJYHJJ-V1

# PARTS

Item no. Nr. N° d'article Articolo No. Artículo No.	Reference Image Referenzbild Image de référence Immagine di riferimento Imagen de referencia	Qty. Menge Qté. Qtà Cant.	Item no. Nr. N° d'article Articolo No. Artículo No.	Reference Image Referenzbild Image de référence Immagine di riferimento Imagen de referencia	Qty. Menge Qté. Qtà Cant.
(A)		X2	(B)		X2
	Futon Body			Futon Cushion	
(C)		X4	(D)		X2
	Side Legs			Middle Legs	
(E)		X12	(F)		X1
	Bolts M8*25MM			Wrench	

# NOTICE

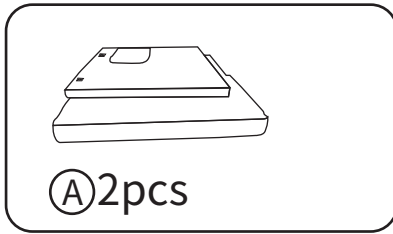
- Read each step carefully. It is very important that each step or instruction is performed in the correct order. If these steps are not followed in sequence, assembly difficulties will occur.
- Make sure all parts are included. Most parts are labeled or stamped on the raw edge.
- Work in spacious area, preferably on a carpet, near the place the unit will be used.
- Do not use power tools to assemble your furniture. Power tools may strip or damage the parts.



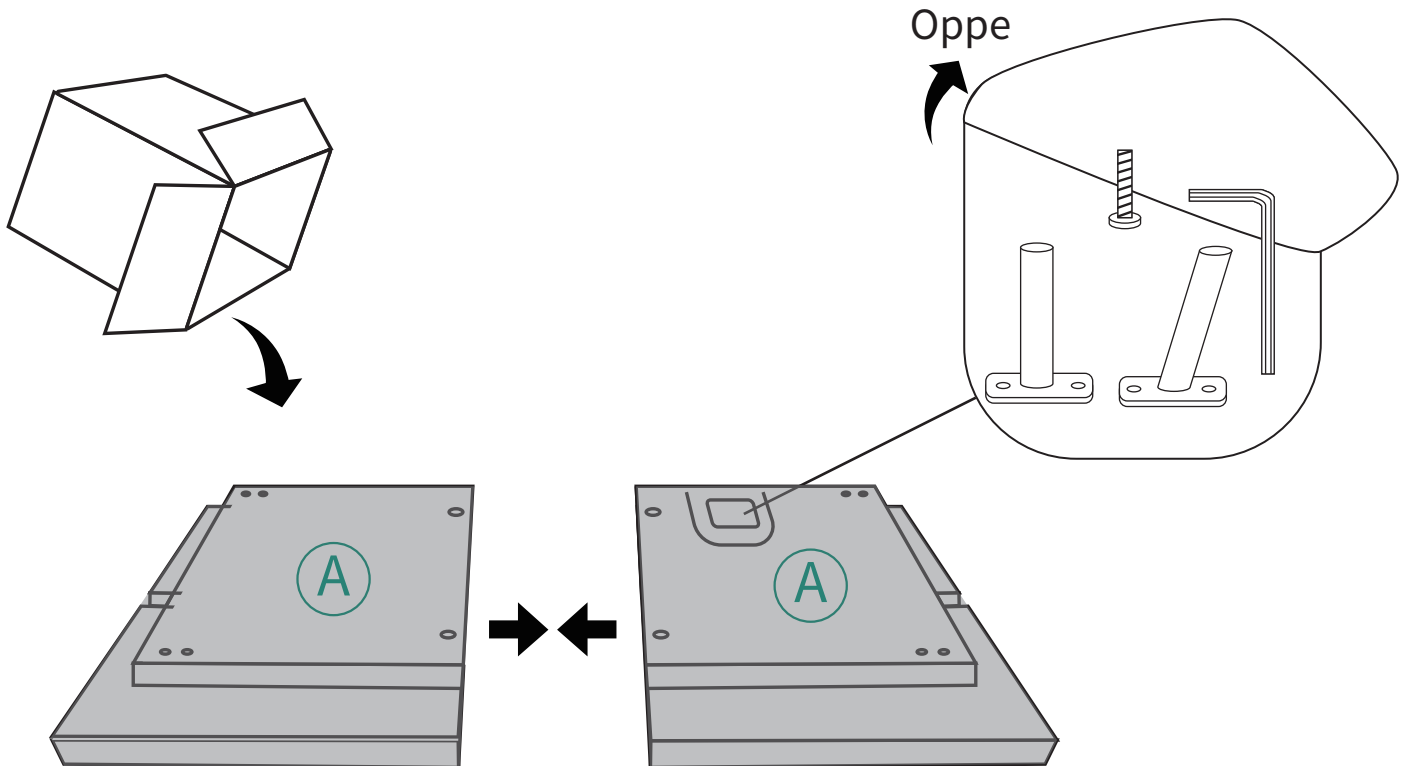
Take out the backrest cushion "B" from the vacuum bag (do not use scissors or knives to cut the vacuum bag, tear it open by hand), and let it stand in a ventilated place for 48 hours to make it 80% fluffy.

# ASSEMBLY

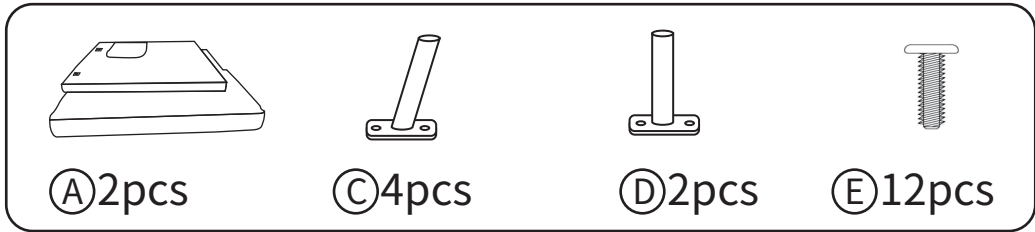
1



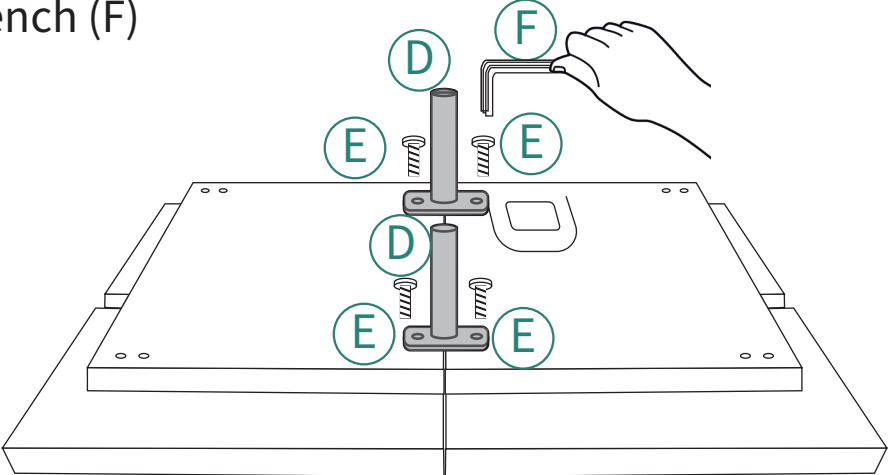
Turn the futon body (A)\*2 upside down, place the two sides of the mounting middle legs close together. Take out the legs and hardware in the fabric zipper pocket on the underside of the sofa bed.



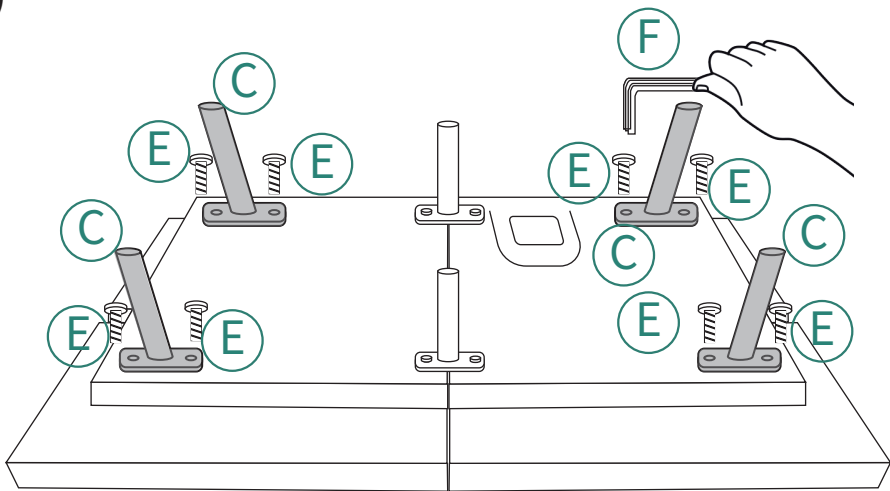
# 2



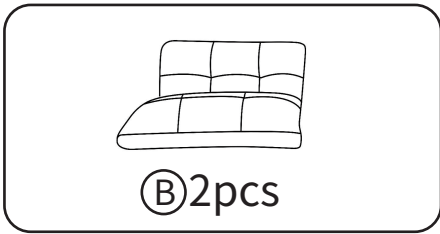
Attach the Middle Legs (D)\*2 to the Futon Body (A) with Four Bolts (E)\*4, using the Wrench (F)



Attach the Side Legs (C)\*4 to the Futon Body (A) with Eight Bolts (E)\*8, using the Wrench (F)

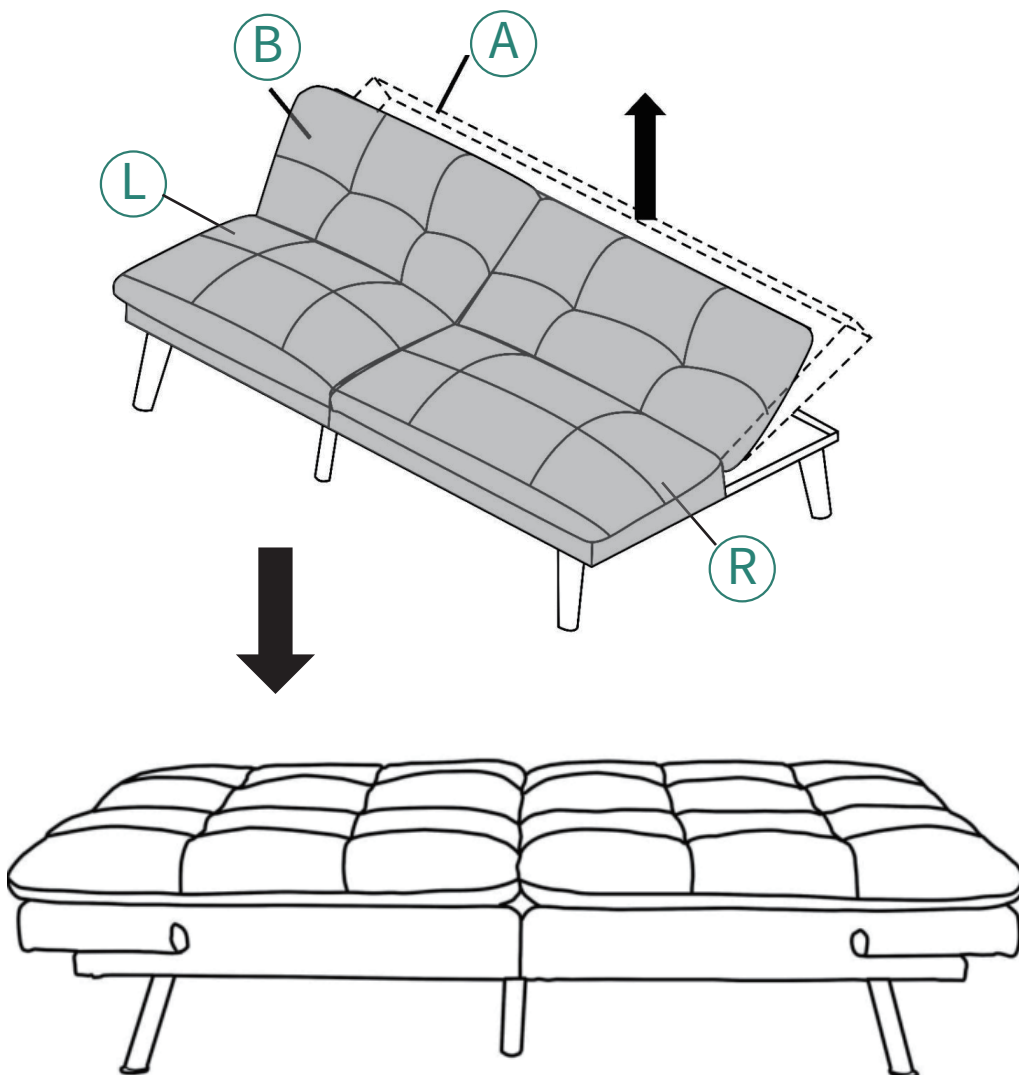


3



Put the Futon Cushion (B)\*2 ON the Futon Body (C)\*2 Flip the Futon over so it is supported on its legs, the assembly is complete.

When placing Futon Cushion B \* 2 on Futon Body A, pay attention to distinguishing the left and right sides of the Futon Cushion.



Installation Completed

Installation Abgeschlossen

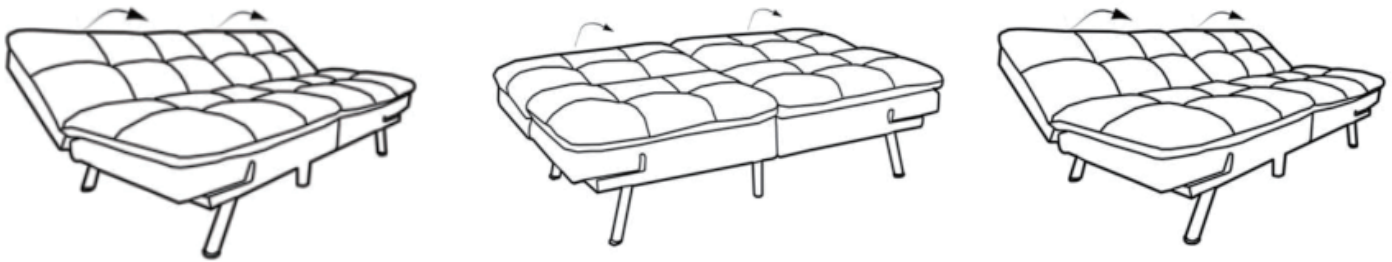
Installation Complétée

Installazione Completata

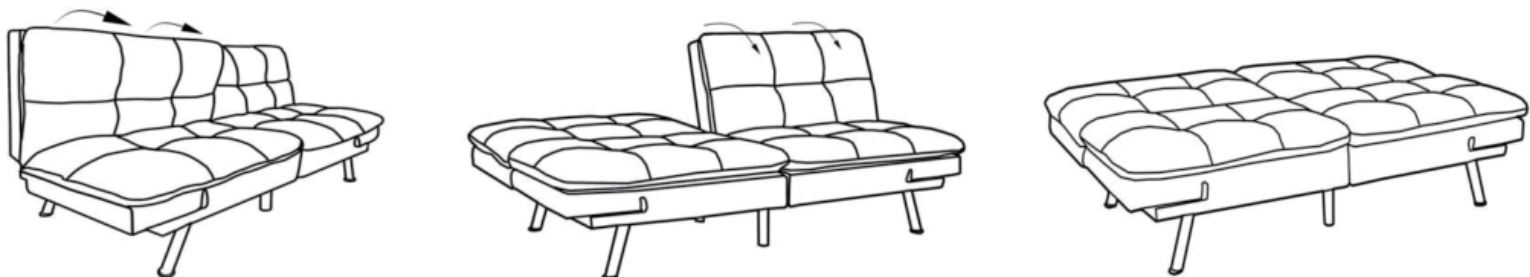
Instalación Completada

# 4

Converting to sofa: in bed (flat) position, simply lift backrest or armrest upwards with each click sound until you reach the sofa position.



Converting to bed: from sofa or split position, lift backrest all the way upwards until the last click is heard, which unlocks the mechanism and carefully returns to a flat position.



# HELP CENTER



Inquiry



Assembly issue



Missing parts



Returns&Refunds

If you encounter any difficulties during assembly, please contact us.

Wenn Sie während der Montage auf Schwierigkeiten stoßen, kontaktieren Sie uns bitte.

Si vous rencontrez des difficultés lors du montage, veuillez nous contacter.

Se incontri difficoltà durante il montaggio, ti preghiamo di contattarci.

Si encuentras alguna dificultad durante el ensamblaje, por favor contáctanos.

# DISCLAIMER

Manufacturer and seller expressly disclaim any and all liability for personal injury, property damage or loss, whether direct, indirect, or incidental, resulting from the incorrect attachment, improper use, inadequate maintenance, unapproved modification, or neglect of this product.

Der Hersteller und Verkäufer lehnen ausdrücklich jegliche Haftung für Personenschäden, Sachschäden oder Verluste ab, egal ob direkt, indirekt oder zufällig, die durch falsche Anbringung, unsachgemäßen Gebrauch, unzureichende Wartung, nicht genehmigte Änderungen oder Vernachlässigung dieses Produkts entstehen.

El fabricante y vendedor renuncian expresamente a toda responsabilidad por lesiones personales, daños materiales o pérdidas, ya sean directos, indirectos o incidentales, derivados de la incorrecta colocación, uso inadecuado, mantenimiento insuficiente, modificación no aprobada o negligencia de este producto.

Il produttore e il venditore declinano espressamente ogni responsabilità per lesioni personali, danni materiali o perdite, dirette, indirette o incidentali, derivanti dall'errato fissaggio, uso improprio, manutenzione inadeguata, modifica non autorizzata o negligenza di questo prodotto.

Le fabricant et le vendeur déclinent expressément toute responsabilité en cas de blessures corporelles, de dommages matériels ou de pertes, qu'ils soient directs, indirects ou accessoires, résultant de la fixation incorrecte, de l'utilisation inappropriée, de l'entretien insuffisant, de la modification non approuvée ou de la négligence de ce produit.