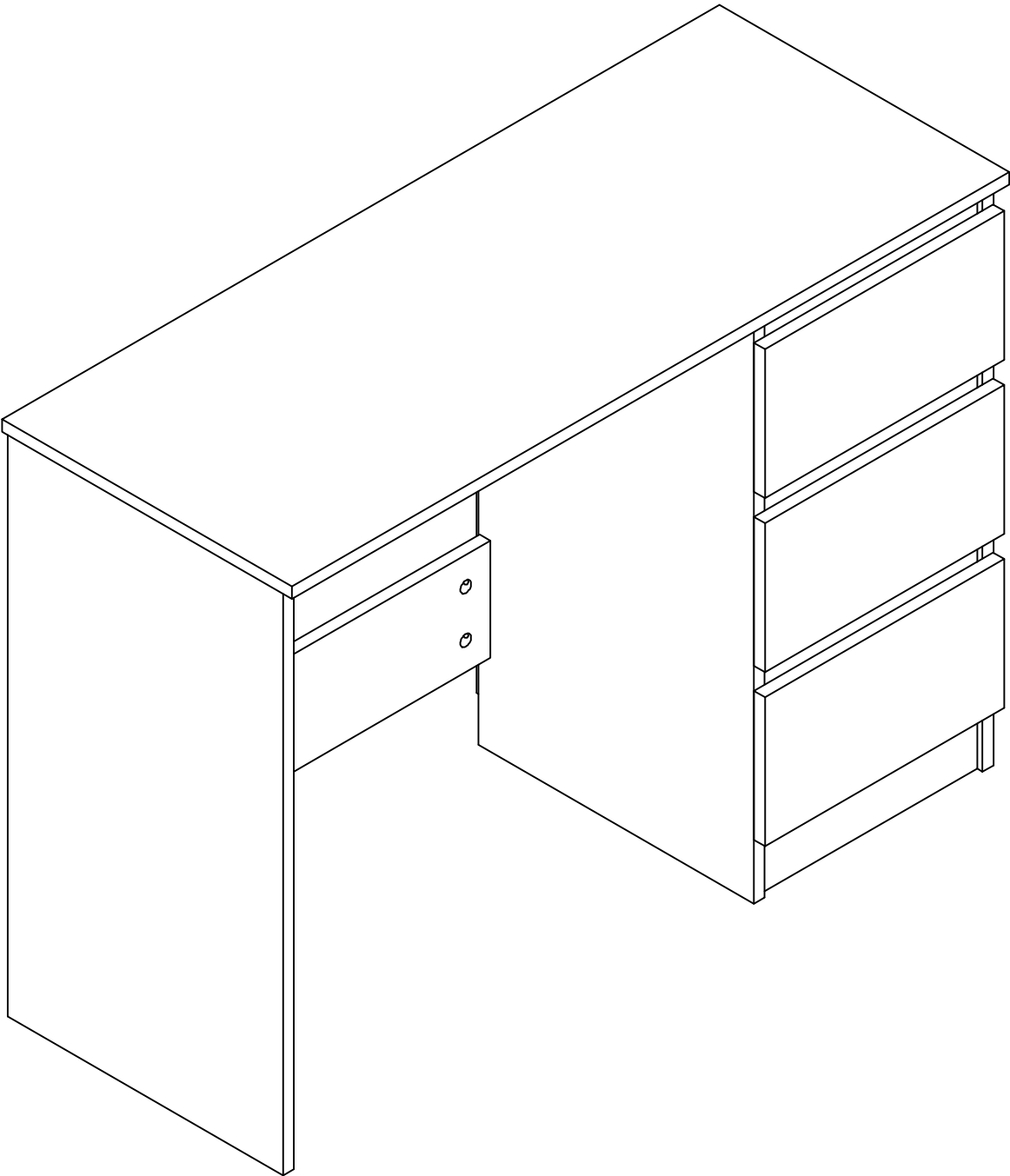


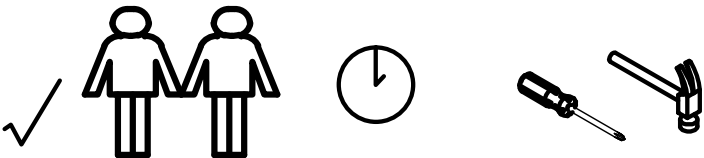
ASSEMBLY INSTRUCTION - Please Keep For Future Reference



# Safety and Care Advice

**IMPORTANT - Please Read This Instruction Carefully Before Assembly.**

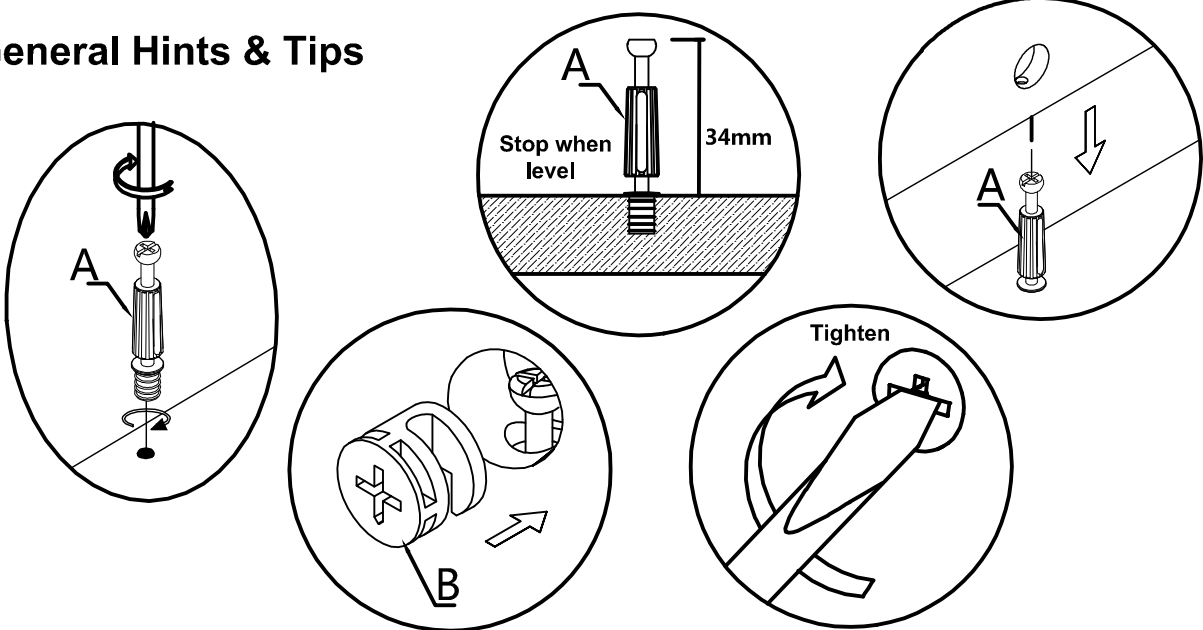
- Check you have all the components and tools listed on page 3.
- Do not stand or put weight on the product, this could cause damage.
- Do not use power drill/drivers for assembly, or the unit may be damaged.
- Remove all settings from the plastic bags and separate them into their groups.
- Assemble the item as close to it's intended position(in the same room) as possible.
- Assemble on a soft level surface to avoid damaging the unit.
- Dispose of all packaging carefully and responsibly.
- Keep children and animals away from the work area, small parts could choke if swallowed.
- Assemble with 2 people.
- Make sure you have enough space to layout the parts before assembly.
- Parts of the assembly will be easier with 2 people.



## CARE and MAINTENANCE

- Only clean using a damp cloth and mild detergent, do not use bleach or abrasive cleaners.
- From time to time check that there are no loose screws on this unit.
- This product should not be discarded with household waste. Take to your local authority waste disposal center.

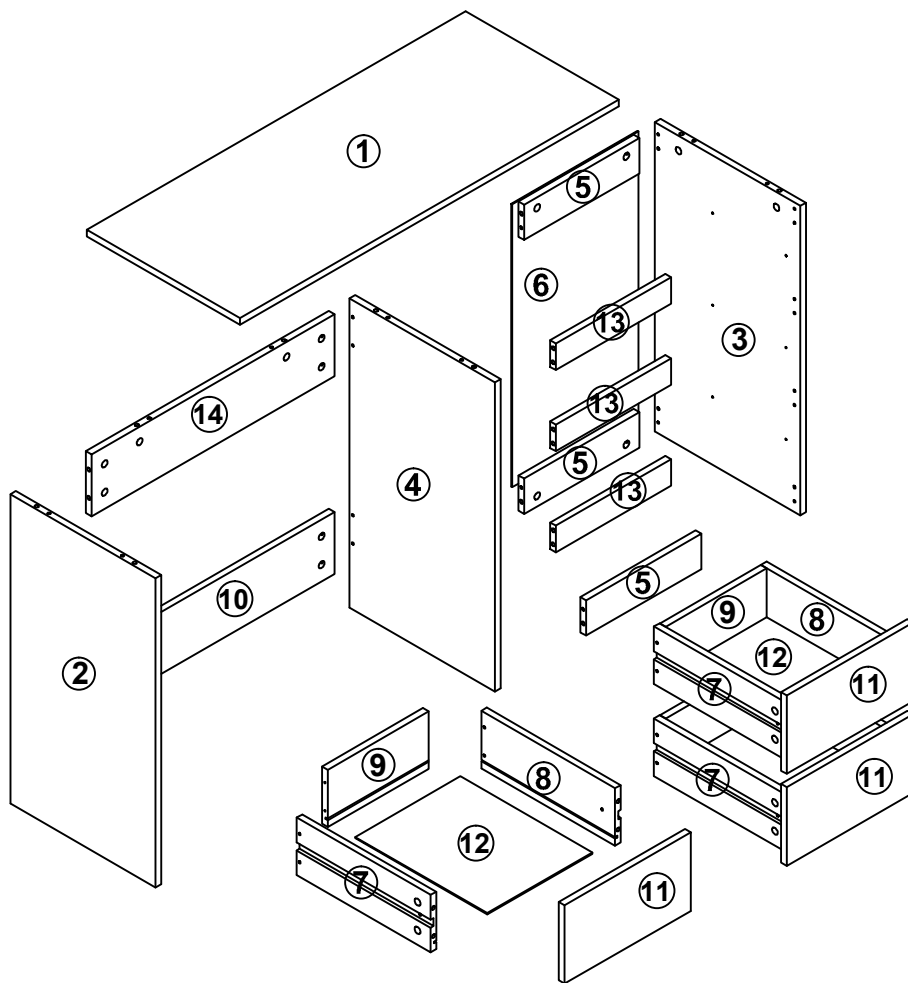
## General Hints & Tips

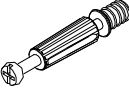
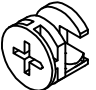
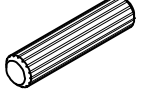

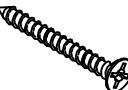
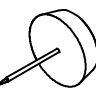


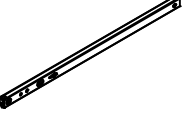


# Components and Tools

**IMPORTANT - Please Check If You Have All The Components and Tools.**

**Note: The quantities below are the correct amount to complete the assembly. In some cases more pieces may be supplied than are required.**



<p>A=46</p>  <p>Peg M6*34mm</p>	<p>B=46</p>  <p>Lock M15*12mm</p>	<p>C=14</p>  <p>Dowel M6*30mm</p>	<p>D=12</p>  <p>Screw M3.5*14mm</p>	<p>E=12</p>  <p>Screw M4*38</p>	<p>F=6</p>  <p>Plastic Feet</p>
<p>G=8</p>  <p>Pin</p>	<p>H=6</p>  <p>Screw M4*12mm</p>	<p>J=6</p>  <p>Drawer Runner</p>			

# Assembly Instruction

## Step 1

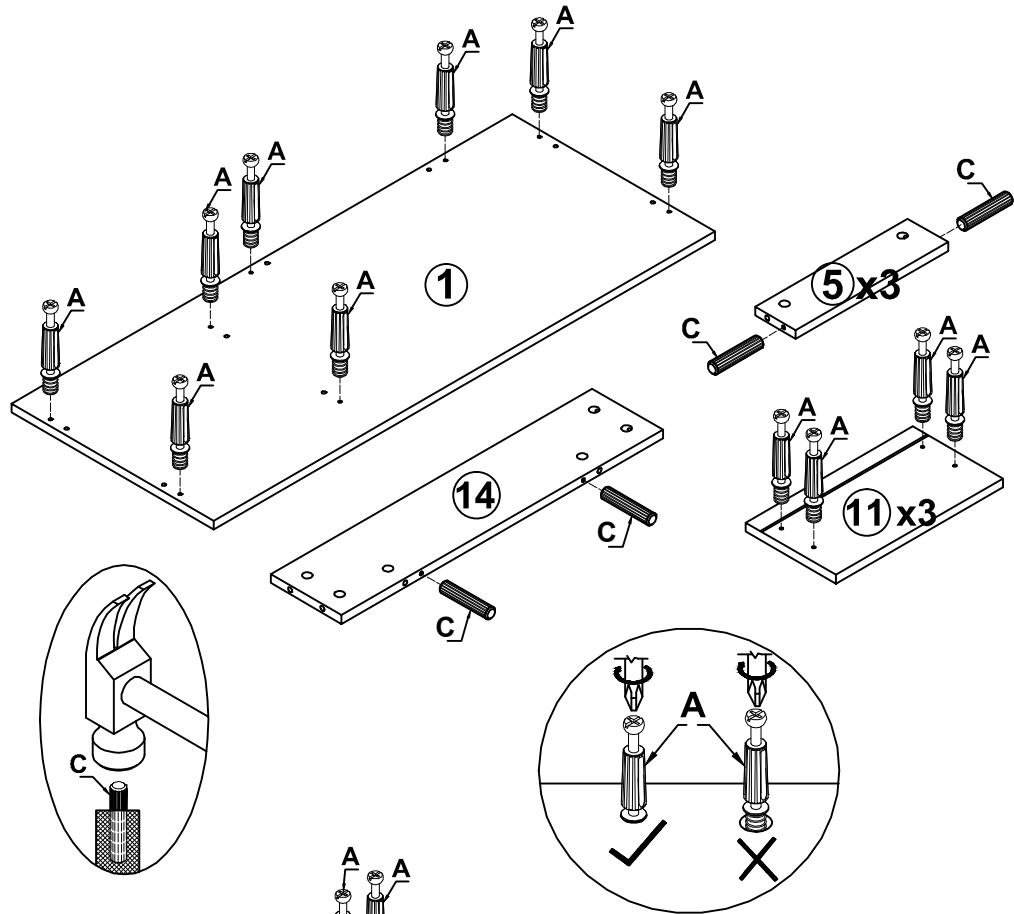
A=20

C=8



Peg

Dowel



## Step 2

A=13

C=4



Peg

Dowel

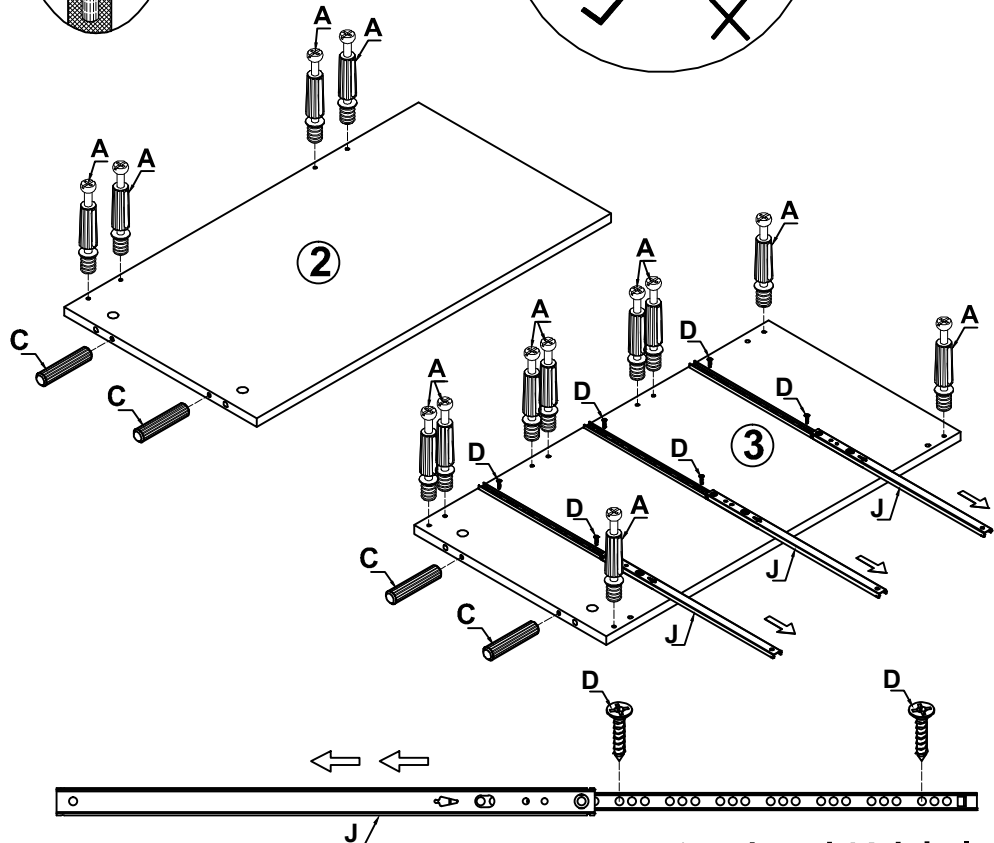
J=3

D=6



Drawer  
Runner

Screw  
M3.5\*14mm



Screw in 4th and 22th holes.

# Assembly Instruction

## Step 3

A=13

C=2



Peg

Dowel

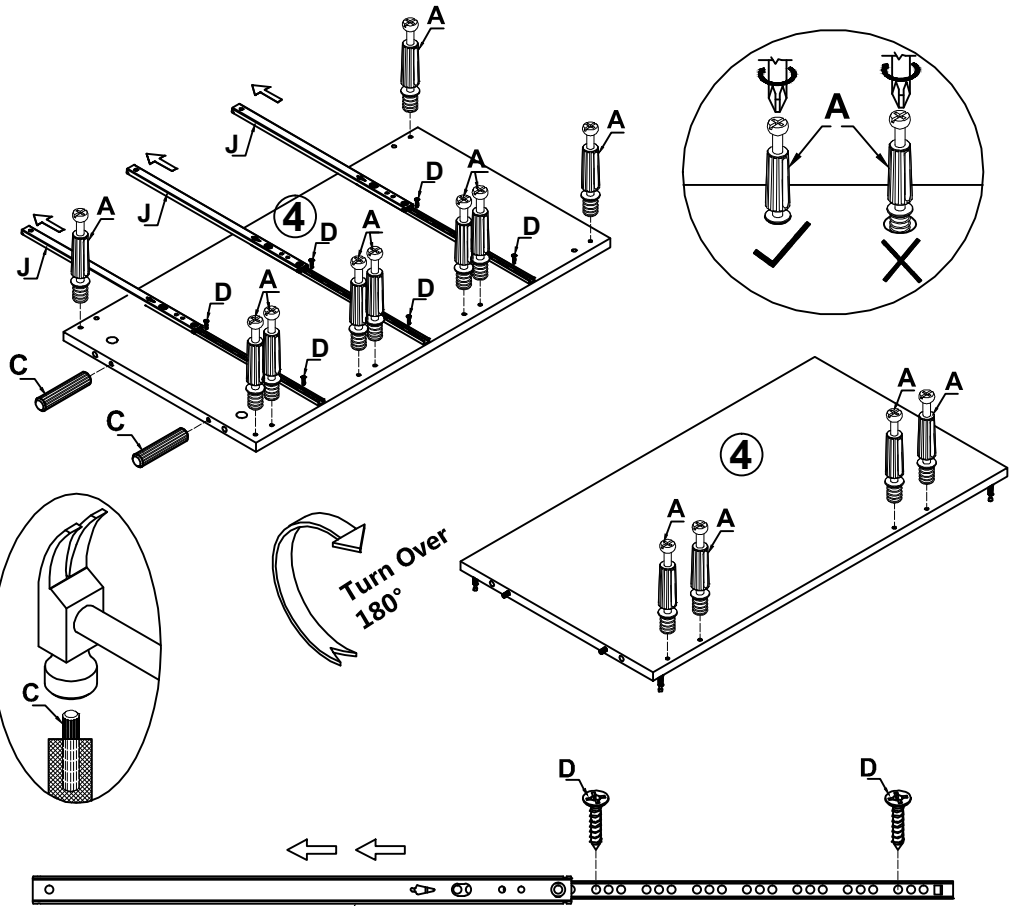
J=3

D=6



Drawer  
Runner

Screw  
M3.5\*14mm



Turn Over  
180°

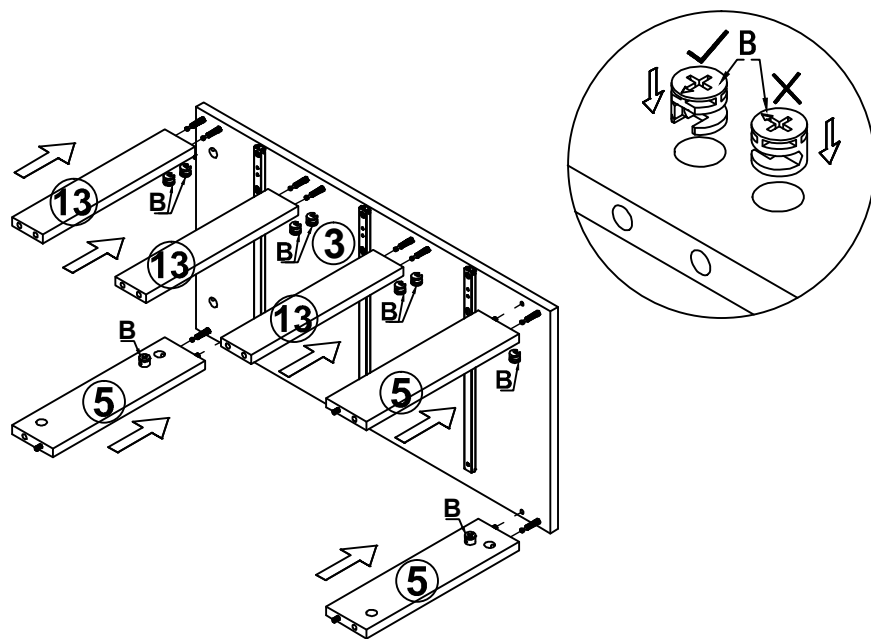
Screw in 4th and 22th holes.

## Step 4

B=9



Lock



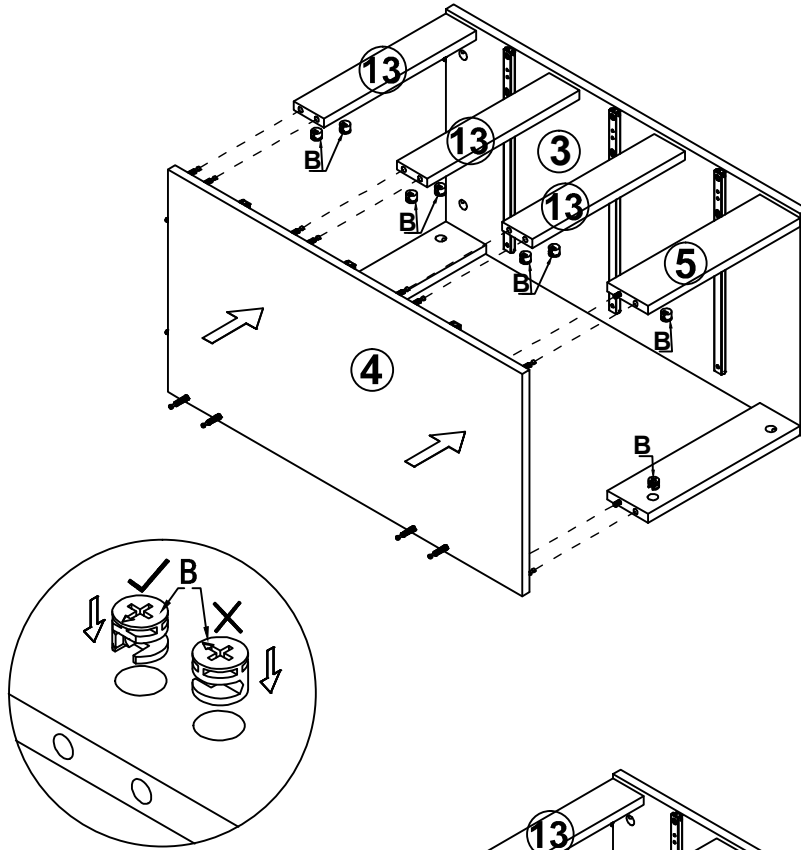
# Assembly Instruction

## Step 5

B=9



Lock

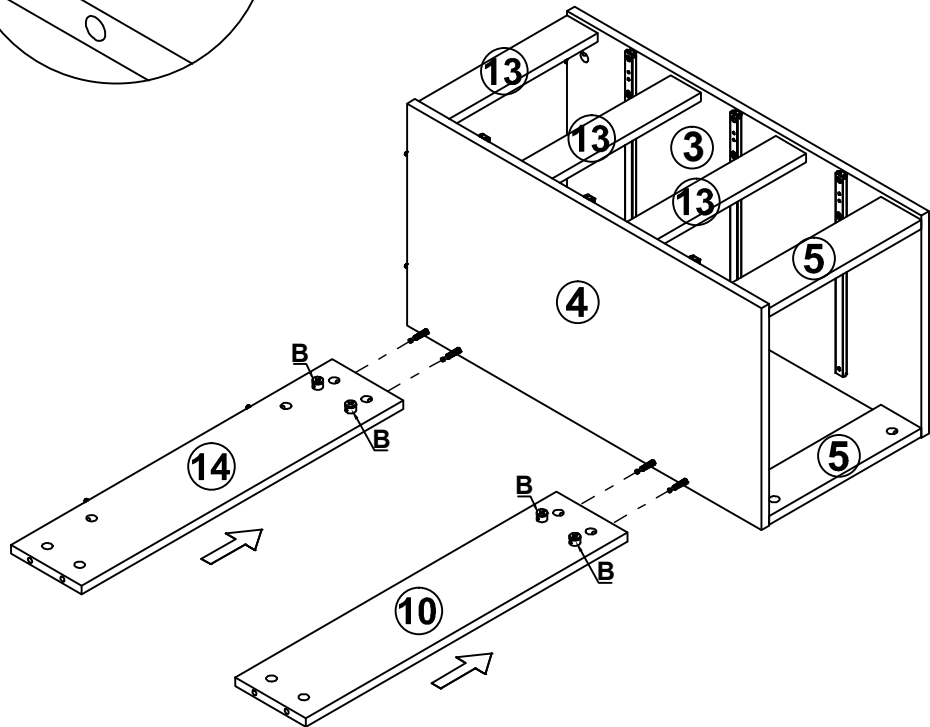


## Step 6

B=4



Lock



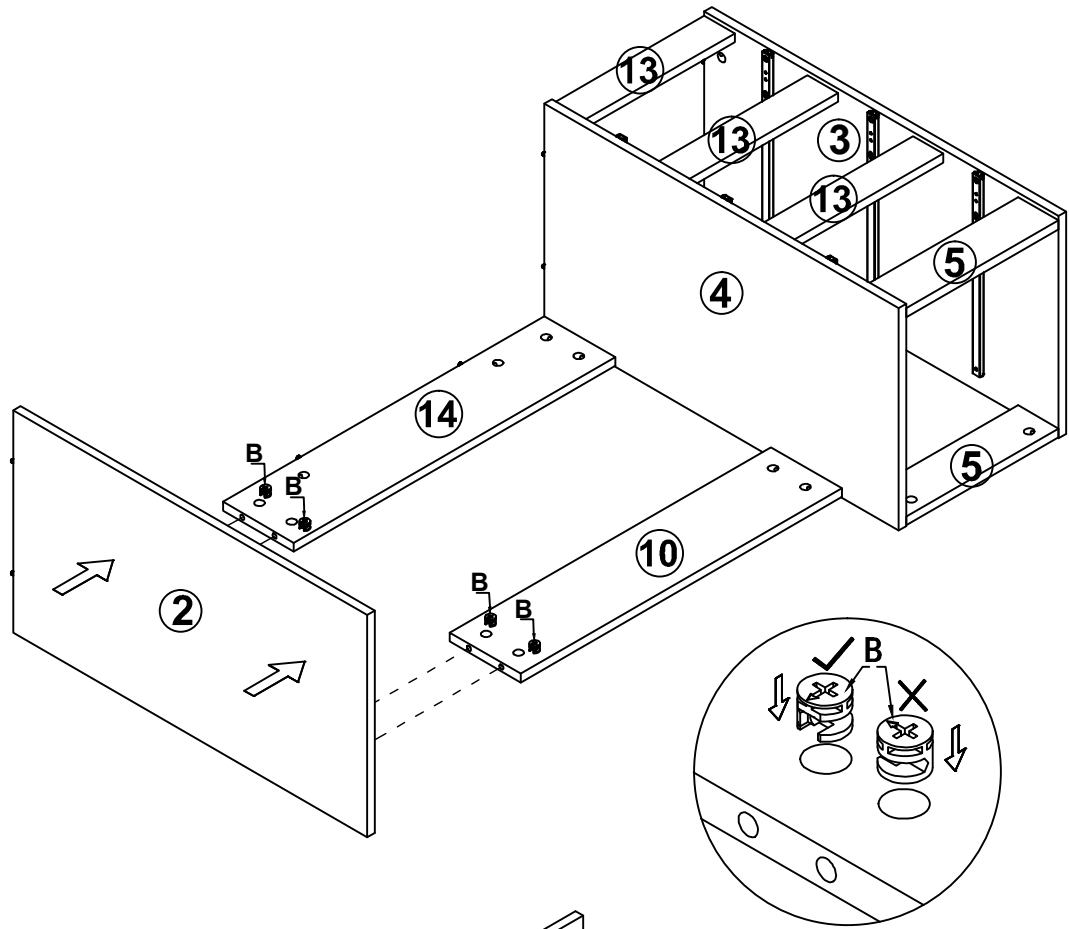
# Assembly Instruction

## Step 7

B=4



Lock

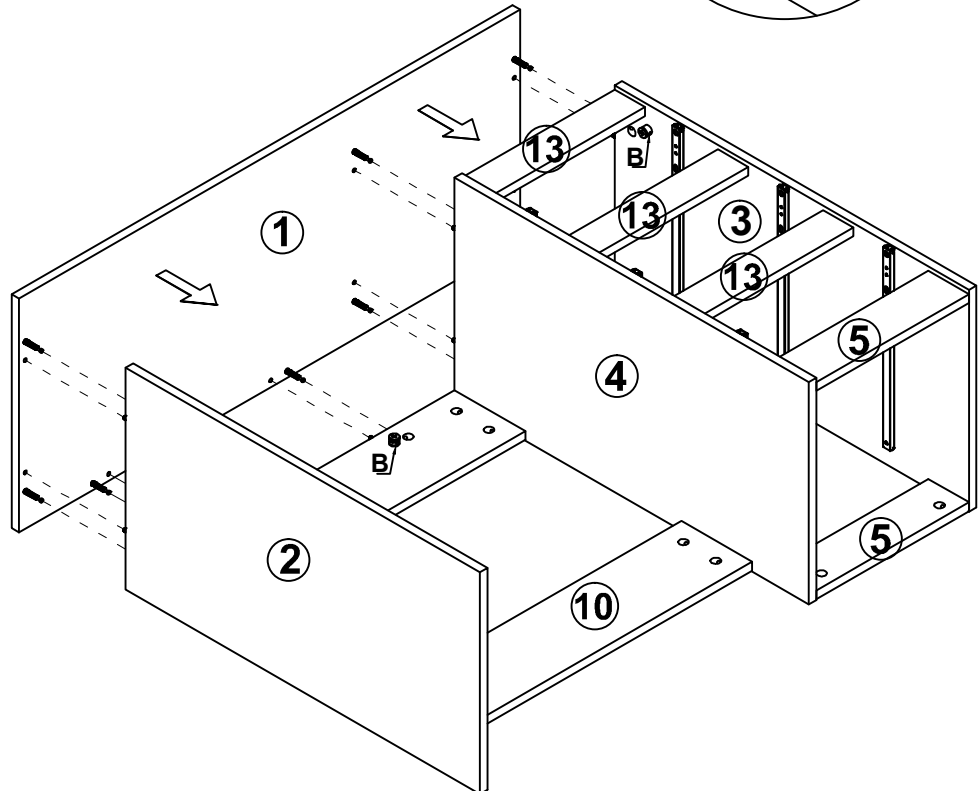


## Step 8

B=8



Lock



# Assembly Instruction

## Step 9

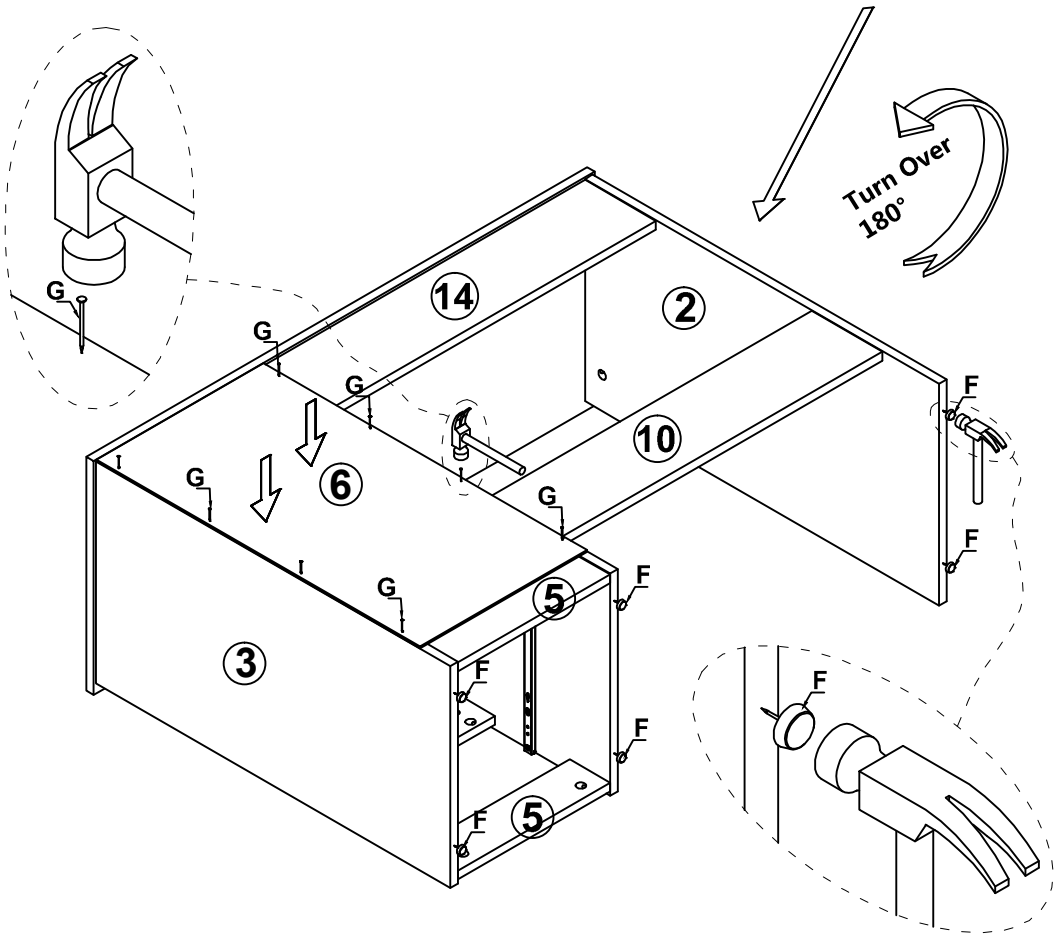
G=8

F=6



Pin

Plastic  
Feet



## Step 10

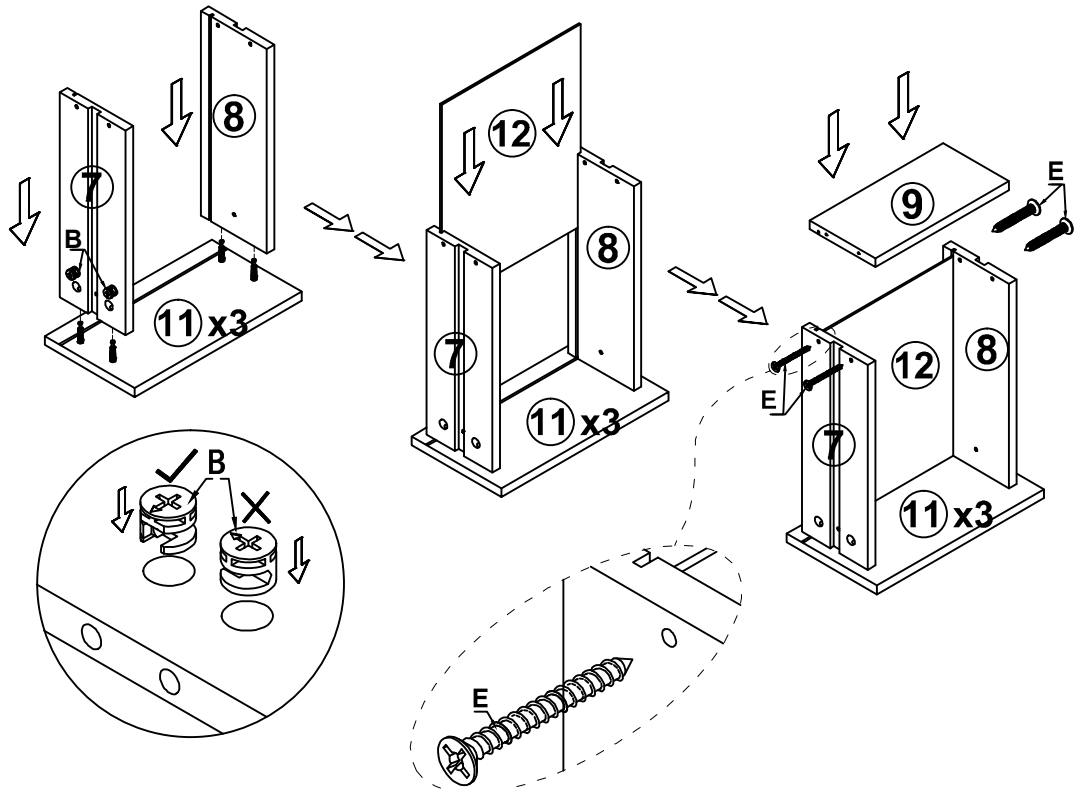
B=12

E=12



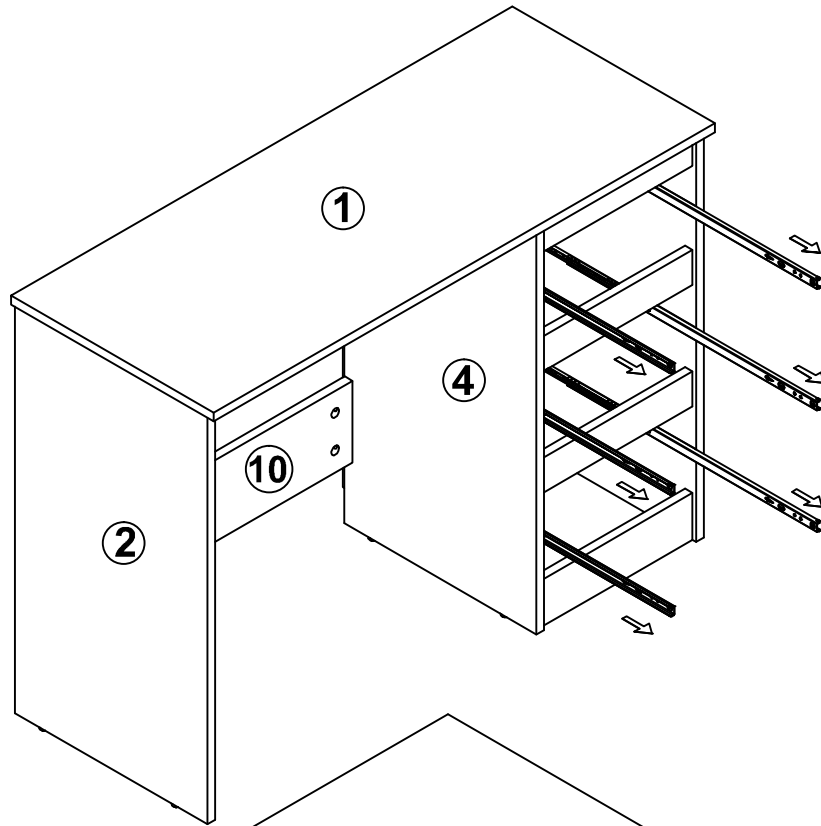
Lock

Screw  
M4\*38

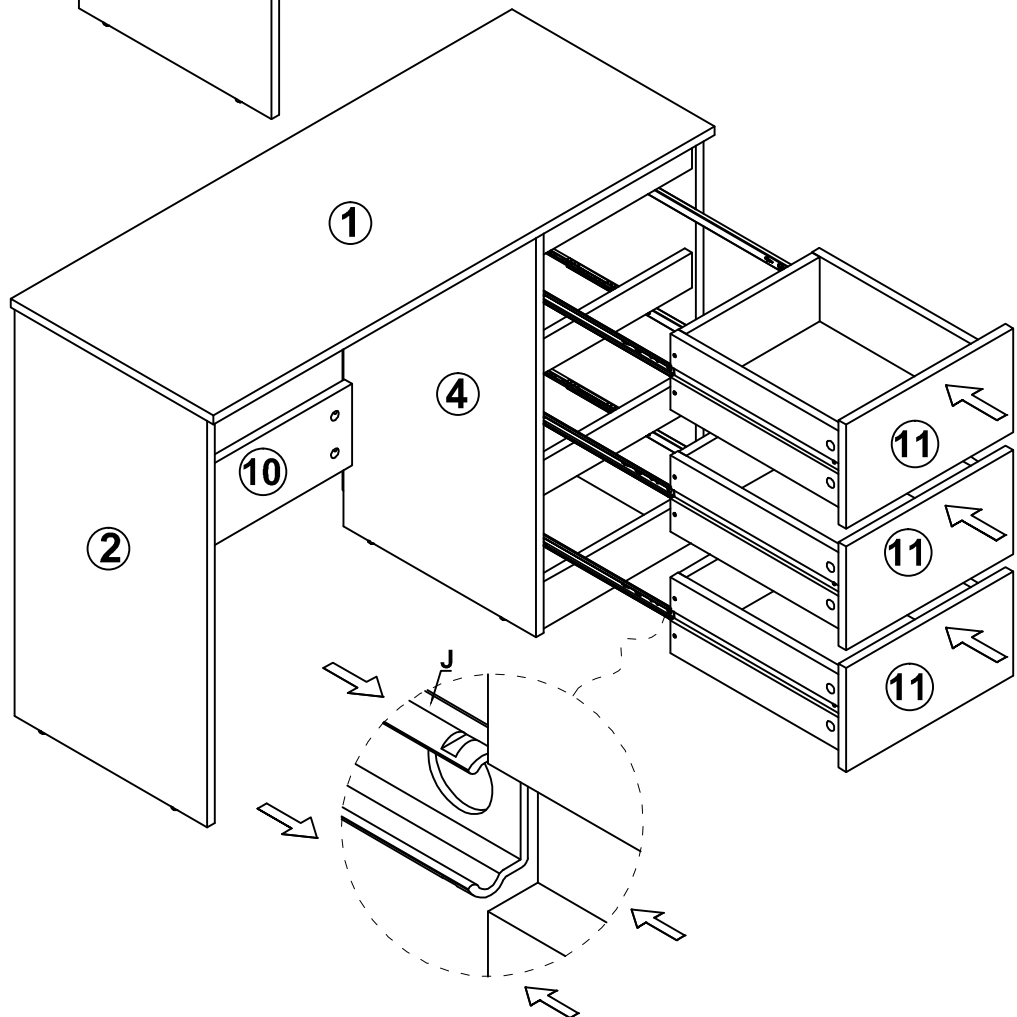


# Assembly Instruction

## Step 11



## Step 12



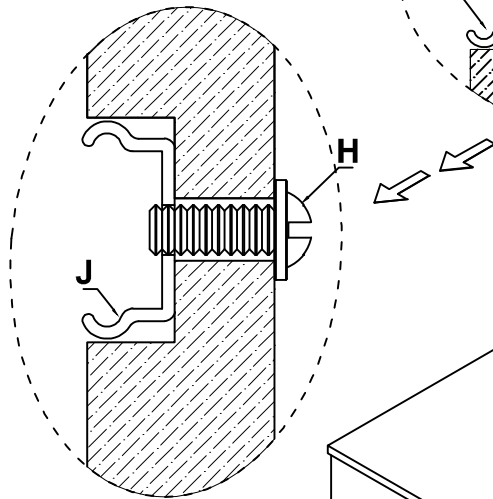
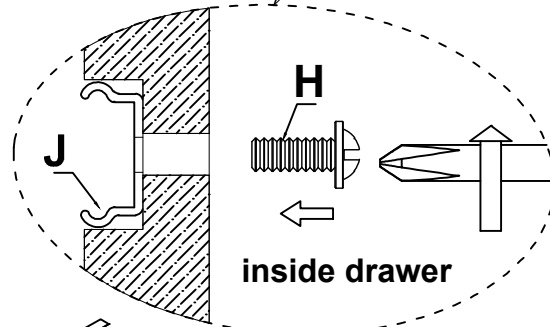
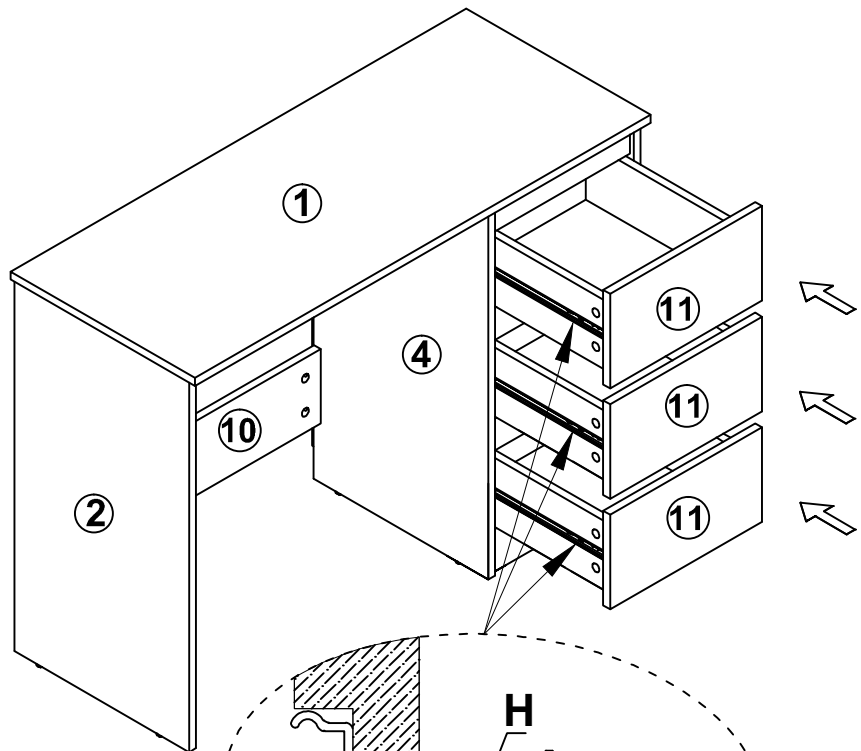
# Assembly Instruction

## Step 13

H=6



Screw  
M4\*12mm



## Step 14

