

Circle Mirror

Instruction Manual



1 Before Assembly

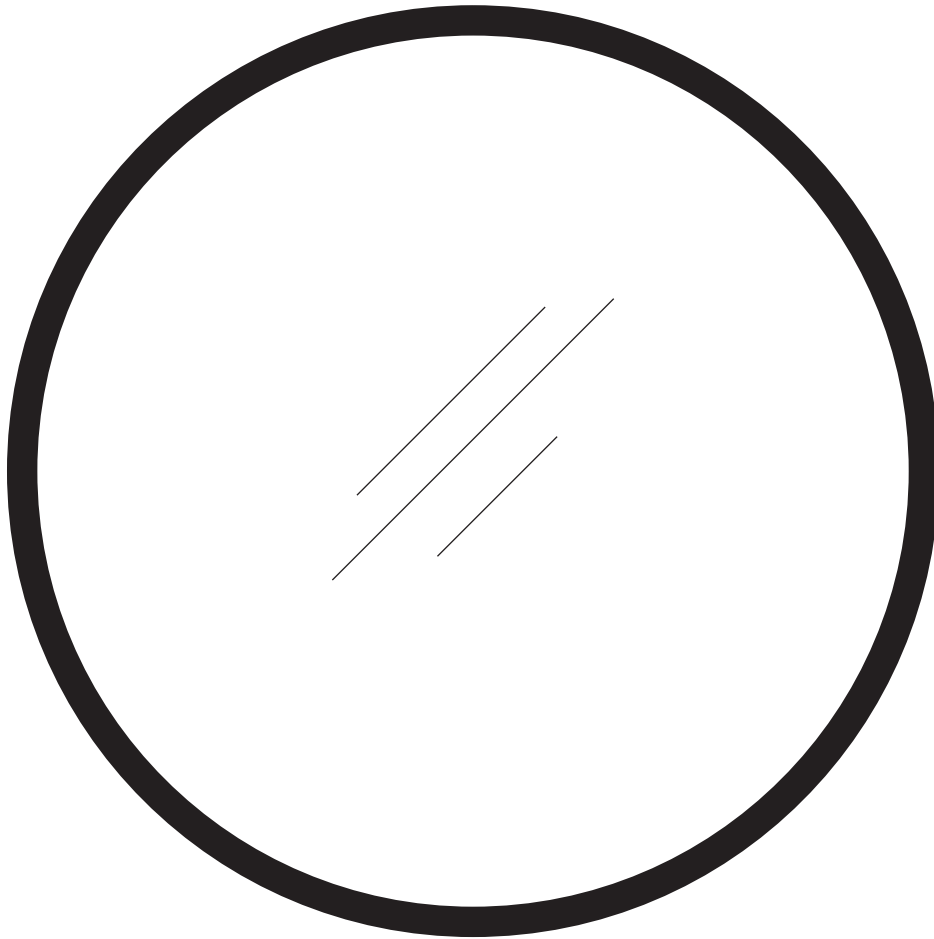
Assembly Tips

- Make sure the wall can bear the weight of the mirror.
- Do not use string or chain to hang the products.

Care Advice

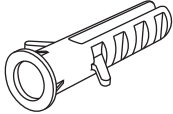
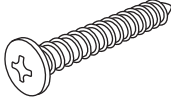
- Before using, clean with warm water and a soft, lint-free cloth.
- Check all the screws and bolts are tight every three months or as needed.
- Clean with an ammonia-free glass cleaner or detergent.
- Avoid spraying cleaners directly onto the mirror.

2 Package List



Mirror
x1

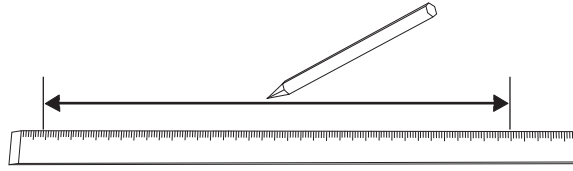
(Not Provided)

 Not Provided x1	 Screws x1
--	---

Tools Required (Not Provided)

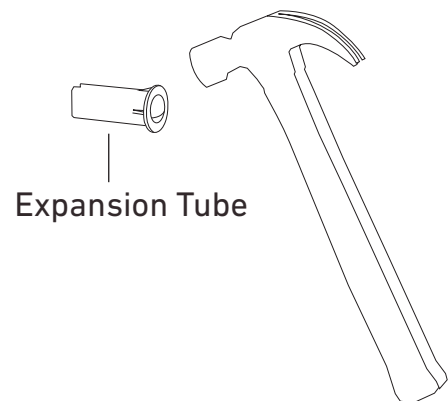
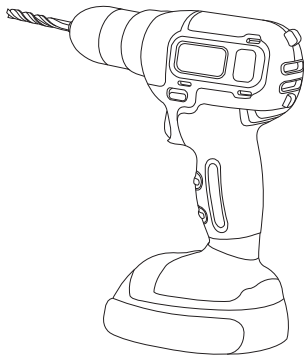


Step 1



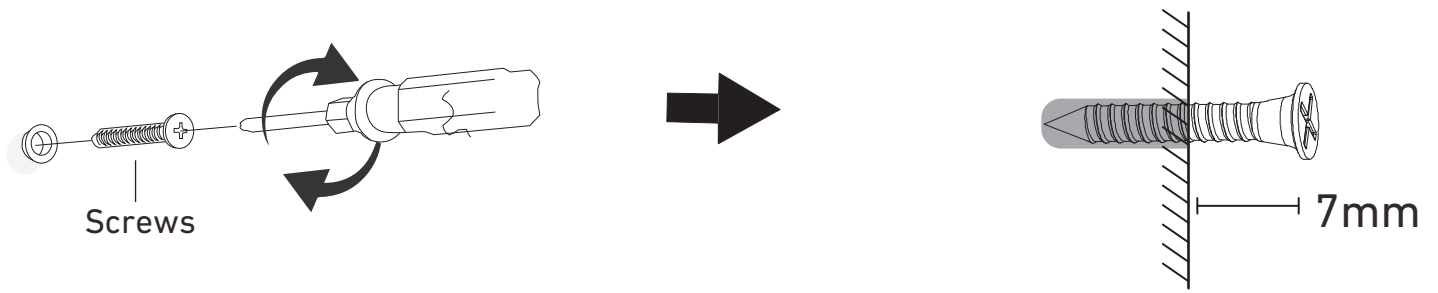
Confirm the distance of the punch in the wall.

Step 2



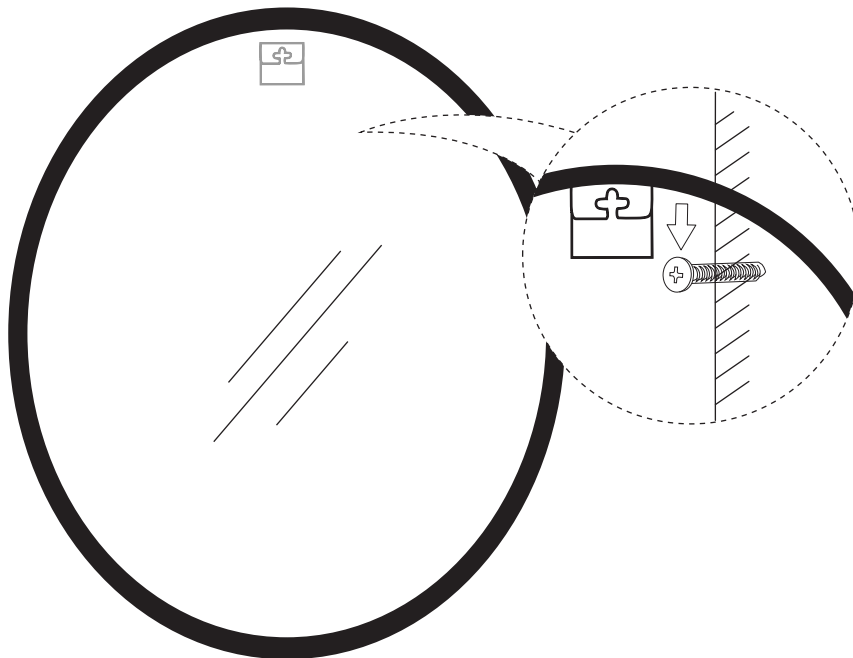
Drill holes at the marked positions on the wall. Hammer the Expansion Tube into the holes.

Step 3



Fix the Screws into the Expansion Tube, leaving about **7mm** of the screws exposed.

Step 4



Hang the Mirror on the wall.

