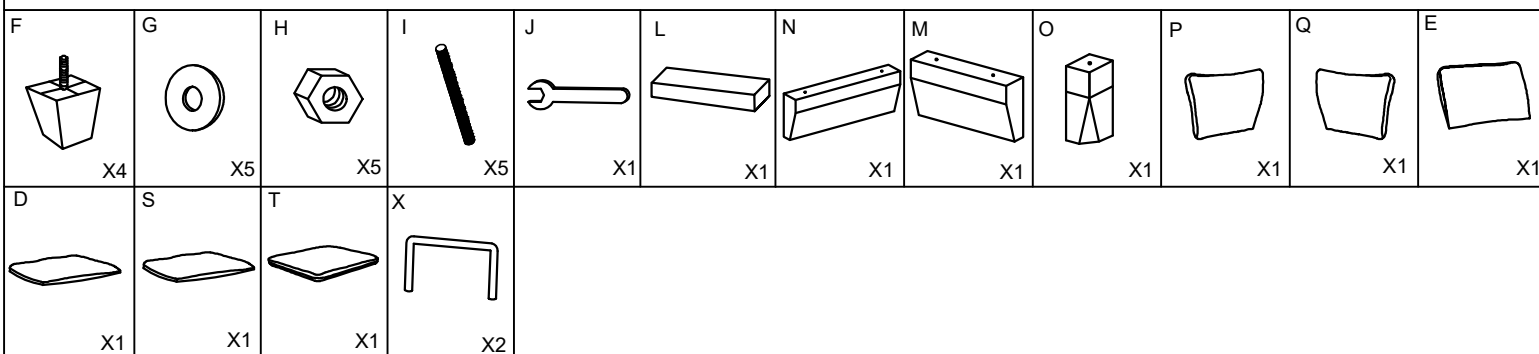
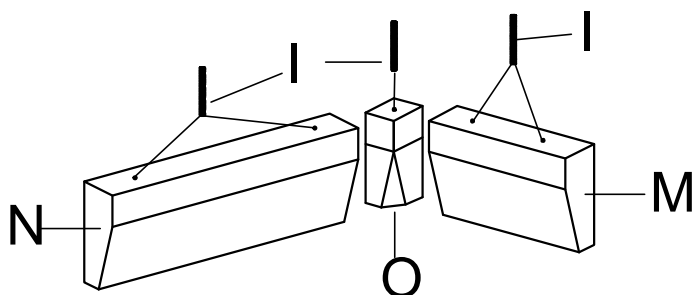


Assembly Instruction

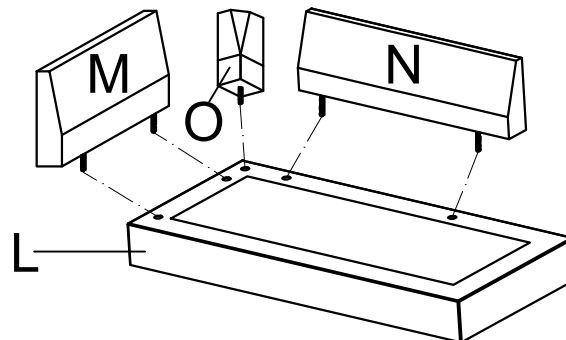
STEP 1: OPEN, SORT, AND LAY OUT ALL PARTS AND HARDWARE. IF YOU HAVE RECEIVED A COUPLE EXTRA, CONGRATS! YOU HAVE SOME SPARE!



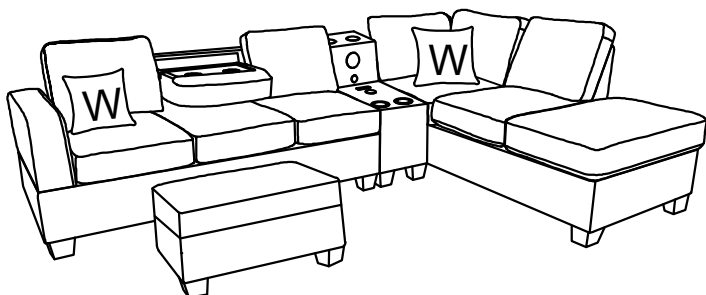
STEP 2: SCREW IN BOLTS (PART "I") INTO THE BOTTOM OF THE SEAT BACKS (PARTS "N" PARTS "O" AND PARTS "M").



STEP 5: INSERT BACKS WITH BOLTS INTO THESE HOLES AS SHOWN BELOW. USE ATTACH END BOLT ON WITH PART "L"



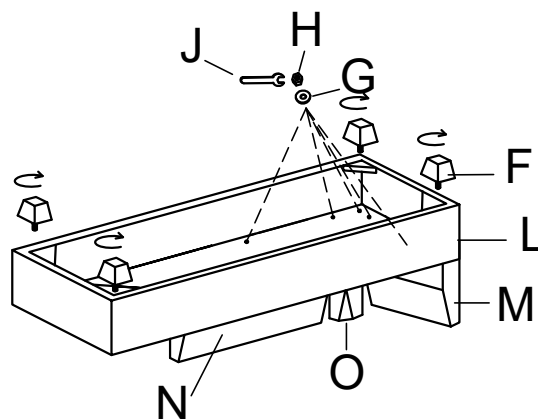
STEP 3: DETERMINE WHICH SIDE YOU WANT THE CHAISE ON. IF YOU WANT YOUR SECTIONAL TO LOOK LIKE THIS: PROCEED TO STEP 4 .



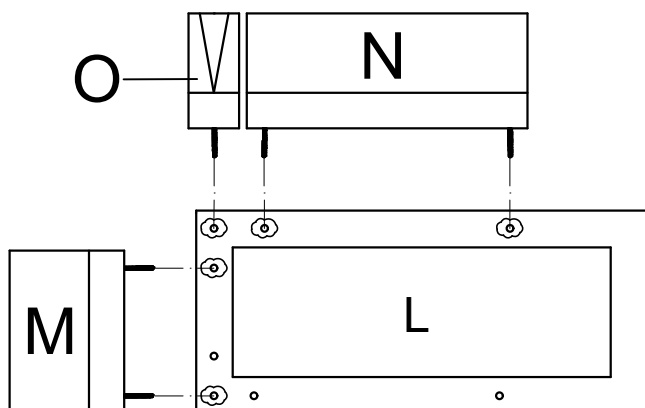
CHAISE ON THE RIGHT

(IF YOU WANT YOUR CHAISE ON THE OTHER SIDE: PLEASE TURN OVER THIS INSTRUCTIONS AND PROCEED TO STEP 3A .)

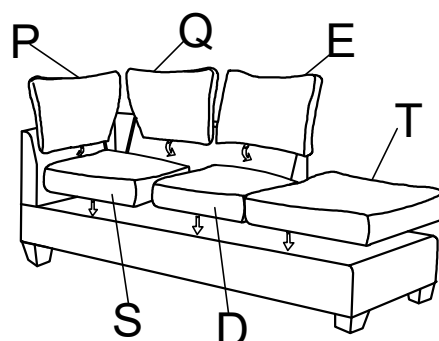
STEP 6: ATTACH THE LEGS TO THE TRIANGLE LEGS SUPPORTS ON THE BOTTOM OF THE FRAM (PART "L") .



STEP 4: LOCATE THESE HOLES ON THE FRAME (PART "L")

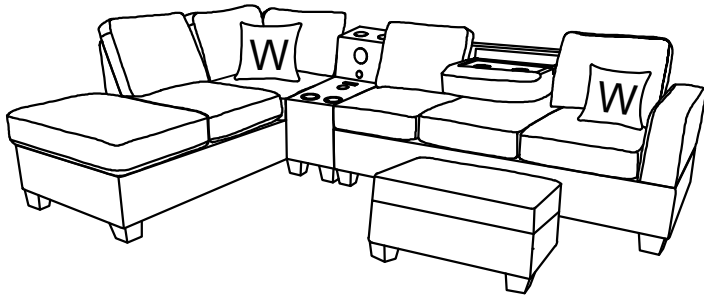


STEP 7: ARRANGE SEAT AND BACK CUSHIONS ACCORDING TO DIAGRAM BELOW. HAVING TROUBLE PUTTING IT TOGETHER THERE ARE TROUBLESHOOTING TIPS AT THE BOTTOM OF PAGE .



Assembly Instruction

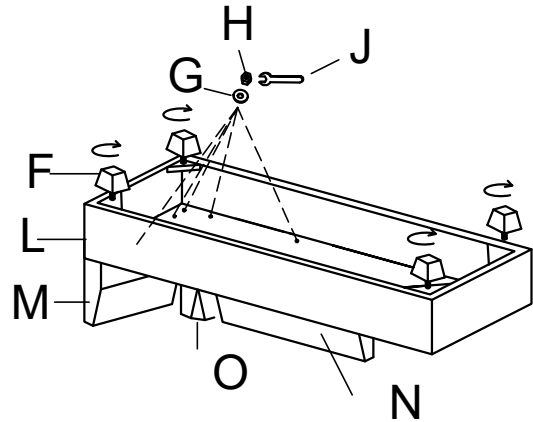
STEP 3A: DETERMINE WHICH SIDE YOU WANT THE CHAISE ON. IF YOU WANT YOUR SECTIONAL TO LOOK LIKE THIS: PROCEED TO STEP 4 .



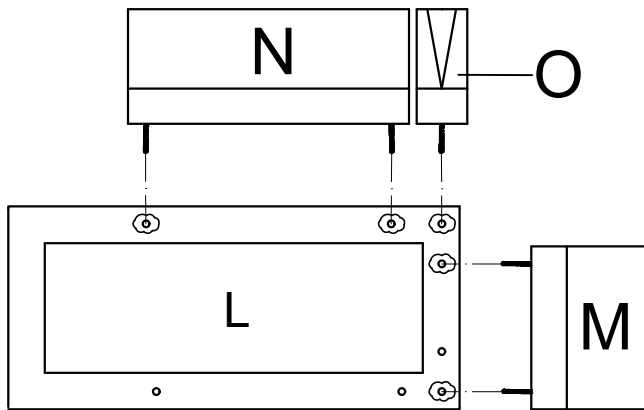
CHAISE ON THE LEFT

(IF YOU WANT YOUR CHAISE ON THE OTHER SIDE: PLEASE TURN OVER THIS INSTRUCTIONS AND PROCEED TO STEP 3 .)

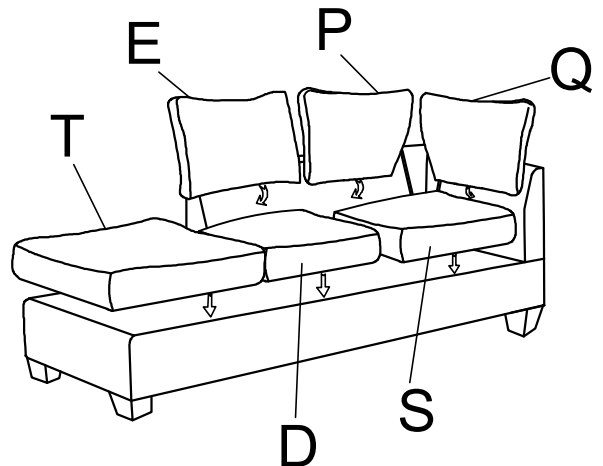
STEP 6A: ATTACH THE LEGS TO THE TRIANGLE LEGS SUPPORTS ON THE BOTTOM OF THE FRAM (PART "L") .



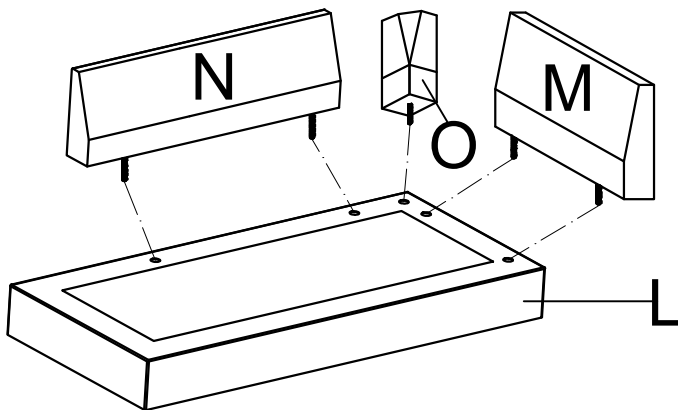
STEP 4A: LOCATE THESE HOLES ON THE FRAME (PART "L")



STEP 7A: ARRANGE SEAT AND BACK CUSHIONS ACCORDING TO DIAGRAM BELOW. HAVING TROUBLE PUTTING IT TOGETHER THERE ARE TROUBLESHOOTING TIPS AT THE BOTTOM OF PAGE .

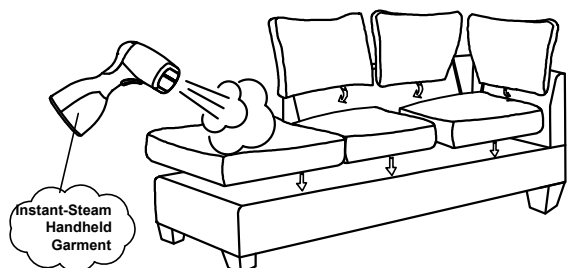


STEP 5A: INSERT BACKS WITH BOLTS INTO THESE HOLES AS SHOWN BELOW. USE ATTACH END BOLT ON WITH PART "L"



TROUBLESHOOT

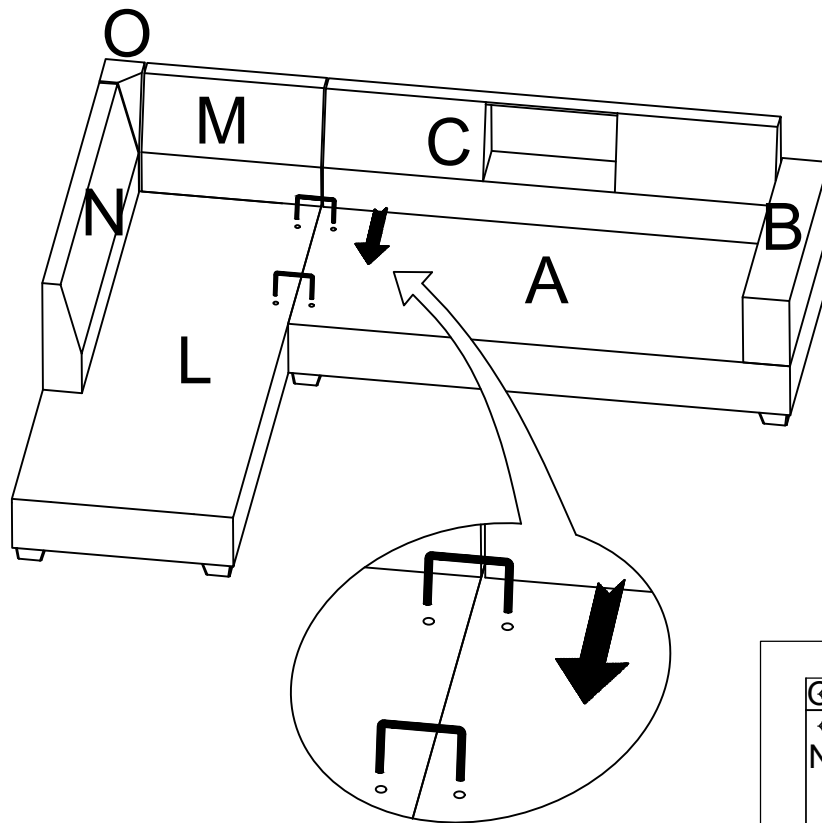
1. Remove hardware from box and sort by size.
2. Please check to see that all hardware and parts are present prior start of assembly .
3. Please follow attached instructions in the same sequence as numbered to assure fast & css. assembly .



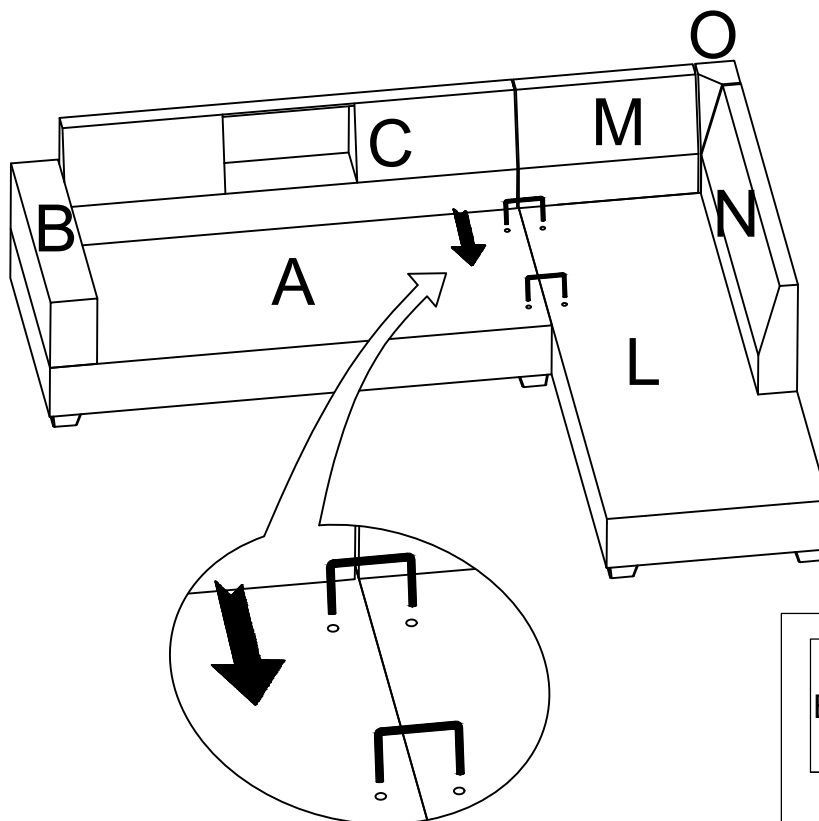
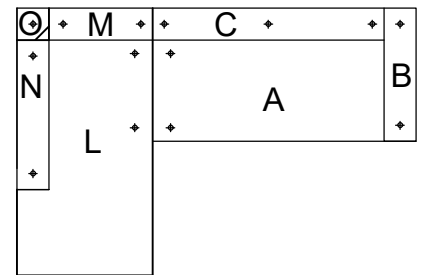
NOTE : It use Instant-Steam Handheld Garment release wrinkles, refresh upholstery in a few minutes.

CHAISE + SOFA (SECTIONAL)

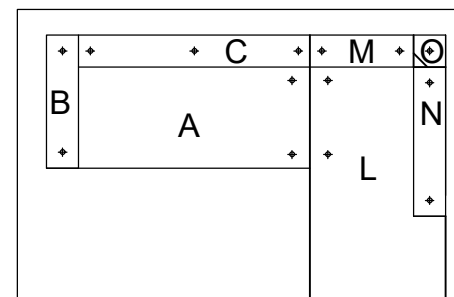
CHAISE + SOFA CAN BE ATTACHED TOGETHER BY "n" SHAPE AS THE DRAWINGS SHOWN BELOW.



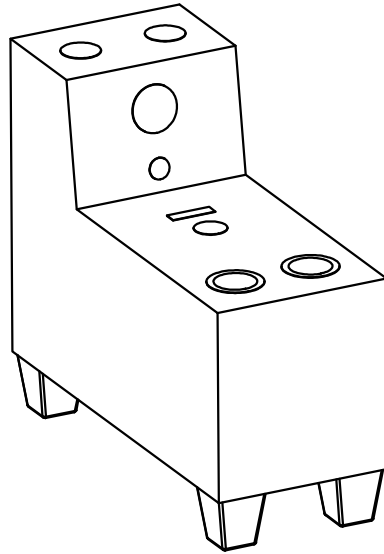
CHAISE ON THE LEFT



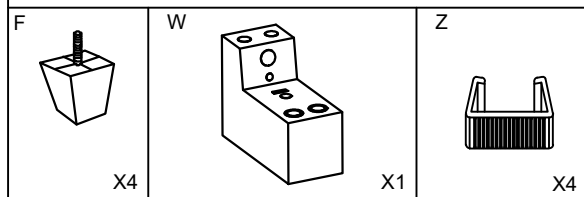
CHAISE ON THE RIGHT



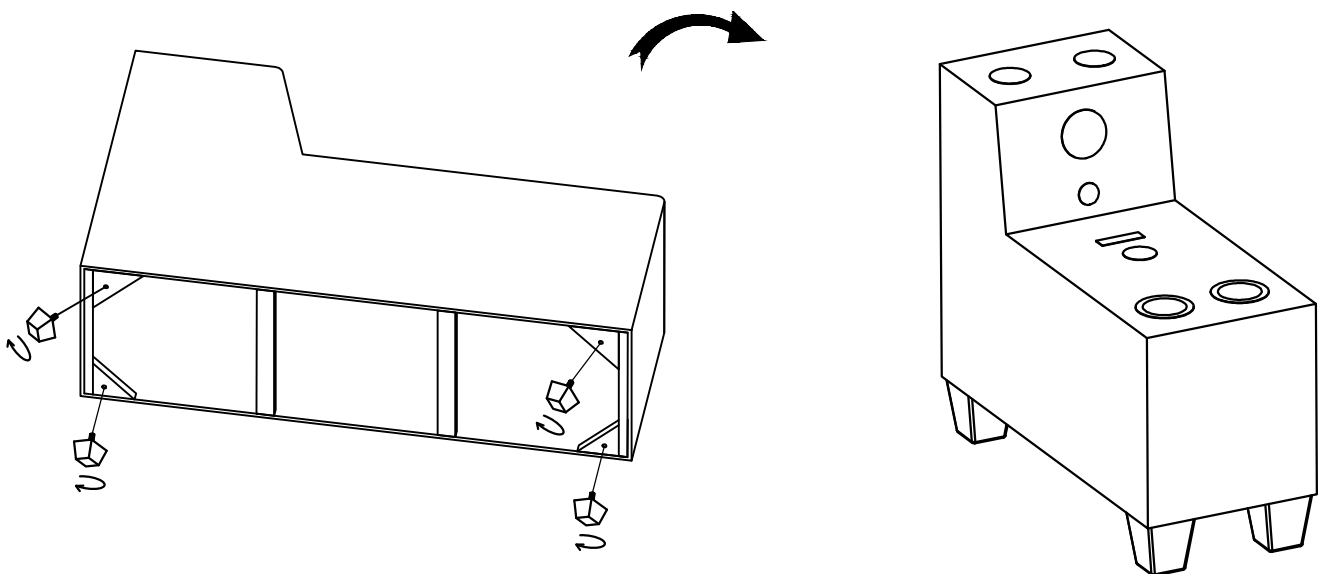
Assembly Instruction



STEP 1: OPEN, SORT, AND LAY OUT ALL PARTS AND HARDWARE. PLEASE CHECK HAVE ALL BEFORE ASSEMBLY.



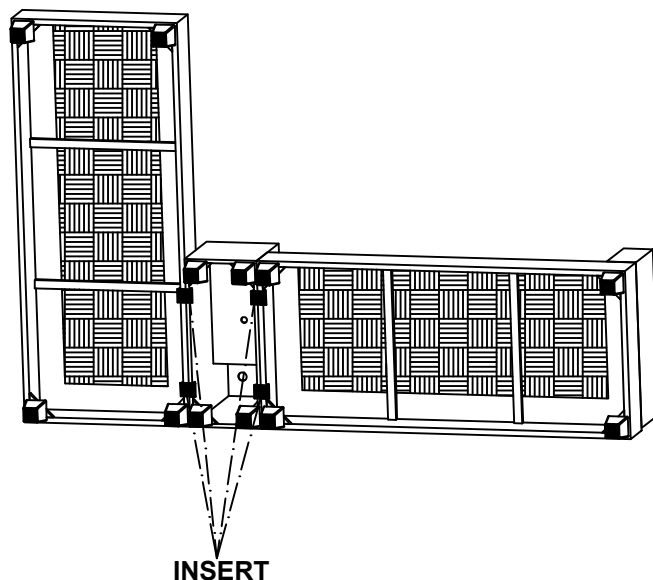
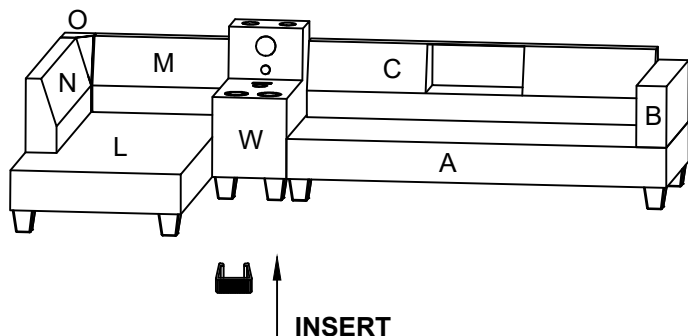
STEP 2: ATTACH THE LEGS INTO THE FRAME (PART "W") .



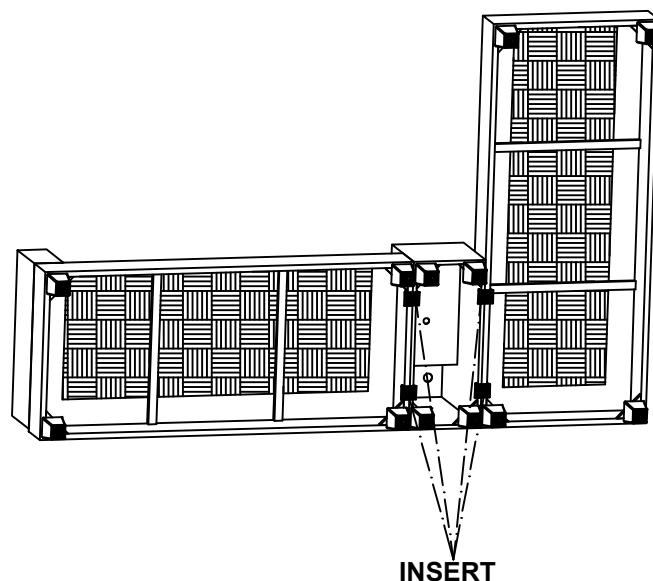
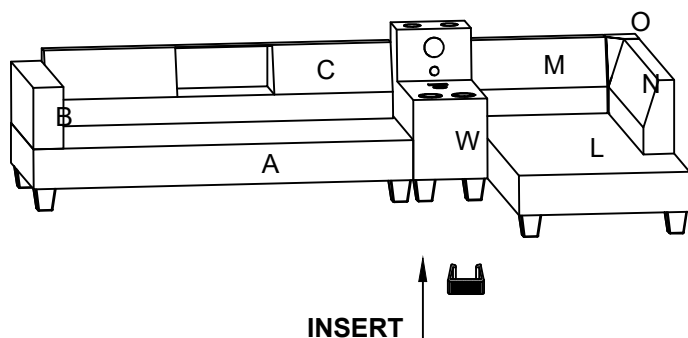
CHAISE + SOFA (SECTIONAL)

SOFA CAN BE ATTACHED TOGETHER BY "U" SHAPE AS THE DRAWINGS SHOWN BELOW.

CHAISE ON THE LEFT

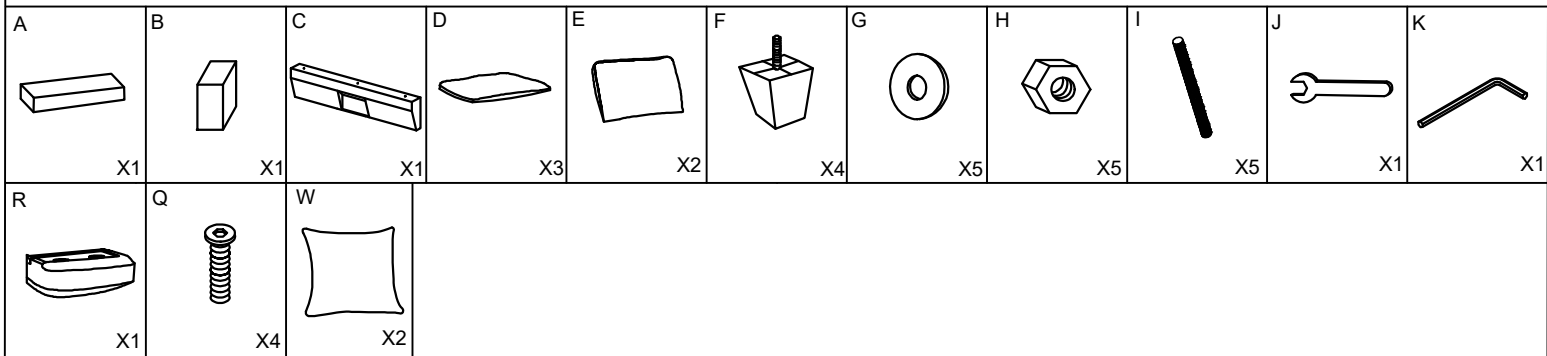


CHAISE ON THE RIGHT

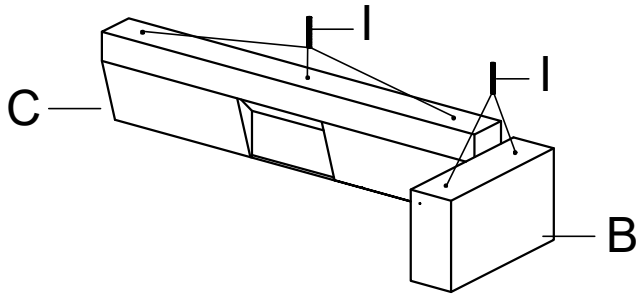


Assembly Instruction

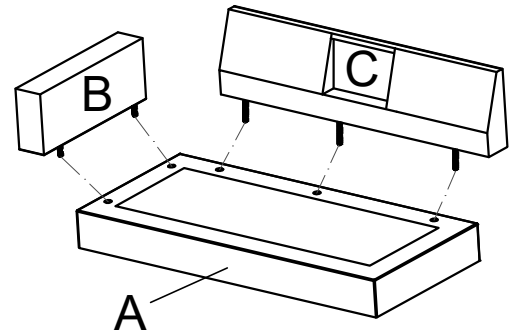
STEP 1: OPEN, SORT, AND LAY OUT ALL PARTS AND HARDWARE. IF YOU HAVE RECEIVED A COUPLE EXTRA, CONGRATS! YOU HAVE SOME SPARE!



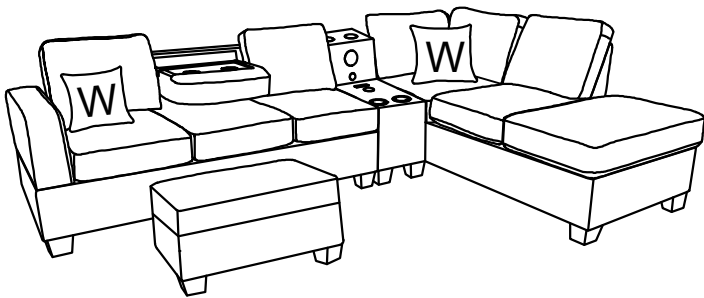
STEP 2: SCREW IN BOLTS (PART "I") INTO THE BOTTOM OF THE SEAT BACKS (PARTS "B" AND PARTS "C").



STEP 5: INSERT BACKS WITH BOLTS INTO THESE HOLES AS SHOWN BELOW. USE ATTACH END BOLT ON WITH PART "A"



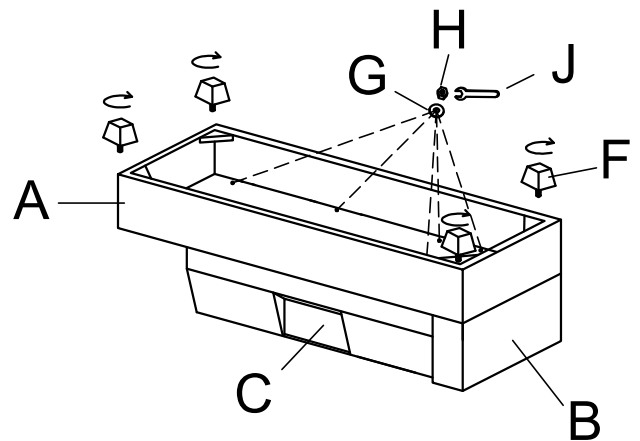
STEP 3: DETERMINE WHICH SIDE YOU WANT THE CHAISE ON. IF YOU WANT YOUR SECTIONAL TO LOOK LIKE THIS: PROCEED TO STEP 4.



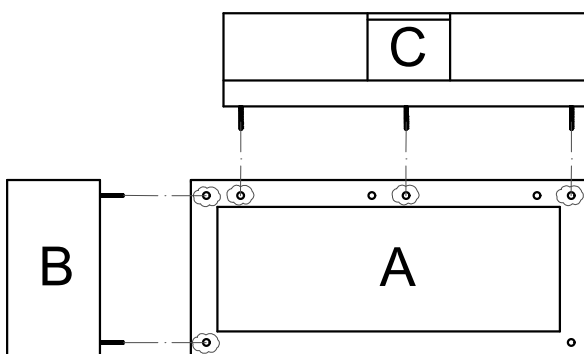
CHAISE ON THE RIGHT

(IF YOU WANT YOUR CHAISE ON THE OTHER SIDE: PLEASE TURN OVER THIS INSTRUCTIONS AND PROCEED TO STEP 3B .)

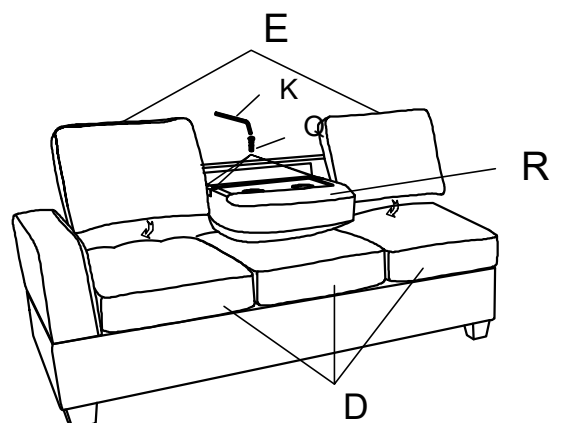
STEP 6: ATTACH THE LEGS TO THE TRIANGLE LEGS SUPPORTS ON THE BOTTOM OF THE FRAM (PART "A") .



STEP 4: LOCATE THESE HOLES ON THE FRAME (PART "A")

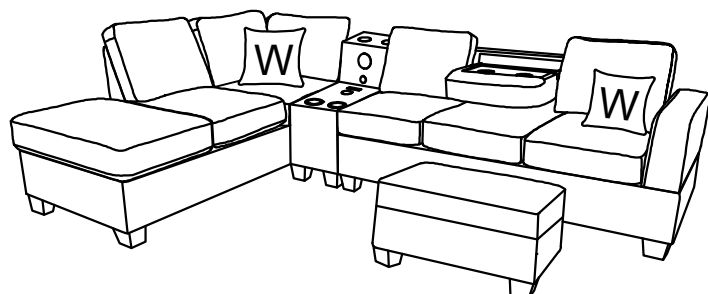


STEP 7: ARRANGE SEAT AND BACK CUSHIONS ACCORDING TO DIAGRAM BELOW. HAVING TROUBLE PUTTING IT TOGETHER THERE ARE TROUBLESHOOTING TIPS AT THE BOTTOM OF PAGE .



Assembly Instruction

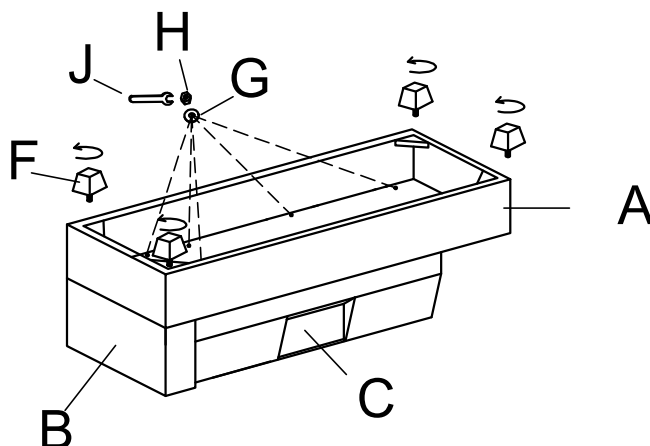
STEP 3B: DETERMINE WHICH SIDE YOU WANT THE CHAISE ON. IF YOU WANT YOUR SECTIONAL TO LOOK LIKE THIS: PROCEED TO STEP 4 .



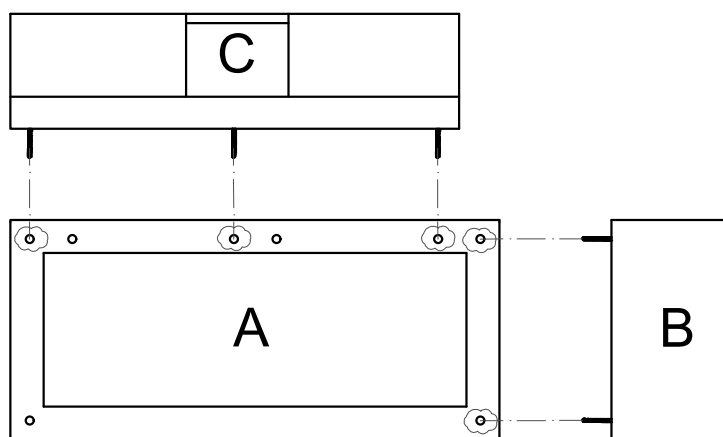
CHAISE ON THE LEFT

(IF YOU WANT YOUR CHAISE ON THE OTHER SIDE: PLEASE TURN OVER THIS INSTRUCTIONS AND PROCEED TO STEP 3 .)

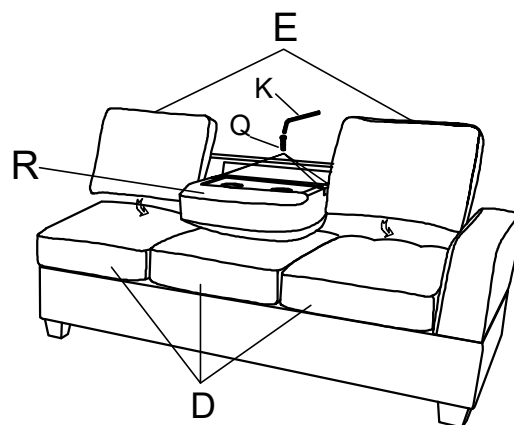
STEP 6B: ATTACH THE LEGS TO THE TRIANGLE LEGS SUPPORTS ON THE BOTTOM OF THE FRAM (PART "A") .



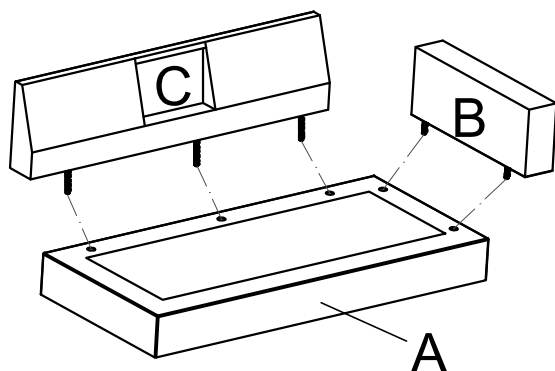
STEP 4B: LOCATE THESE HOLES ON THE FRAME (PART "A")



STEP 7B: ARRANGE SEAT AND BACK CUSHIONS ACCORDING TO DIAGRAM BELOW. HAVING TROUBLE PUTTING IT TOGETHER THERE ARE TROUBLESHOOTING TIPS AT THE BOTTOM OF PAGE .

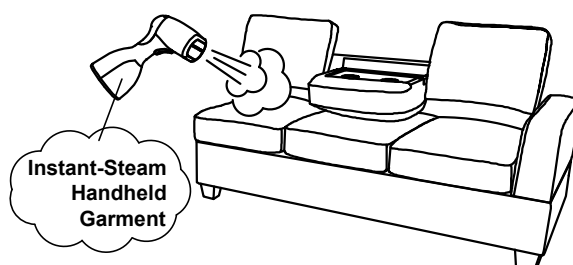


STEP 5B: INSERT BACKS WITH BOLTS INTO THESE HOLES AS SHOWN BELOW. USE ATTACH END BOLT ON WITH PART "A"



TROUBLESHOOT

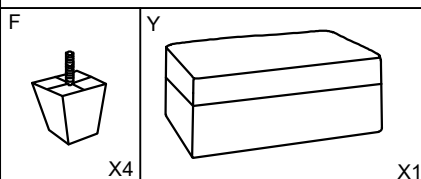
1. Remove hardware from box and sort by size.
2. Please check to see that all hardware and parts are present prior start of assembly .
3. Please follow attached instructions in the same sequence as numbered to assure fast & css. assembly .



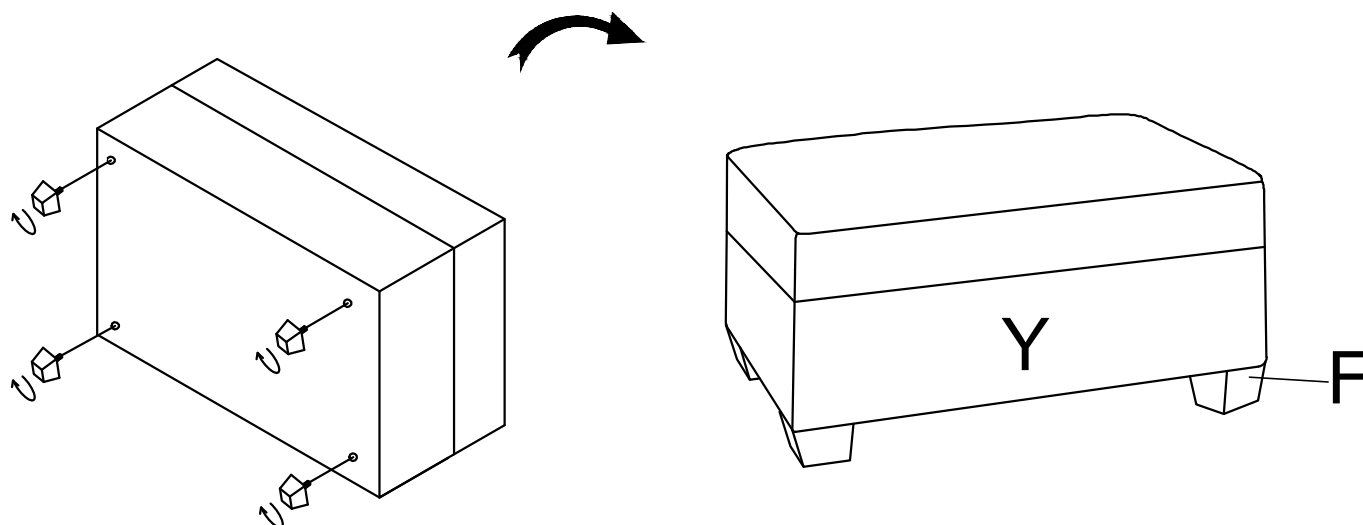
NOTE : It use Instant-Steam Handheld Garment release wrinkles, refresh upholstery in a few minutes.

Assembly Instruction

STEP 1: OPEN, SORT, AND LAY OUT ALL PARTS AND HARDWARE. IF YOU HAVE RECEIVED A COUPLE EXTRA, CONGRATS! YOU HAVE SOME SPARE!

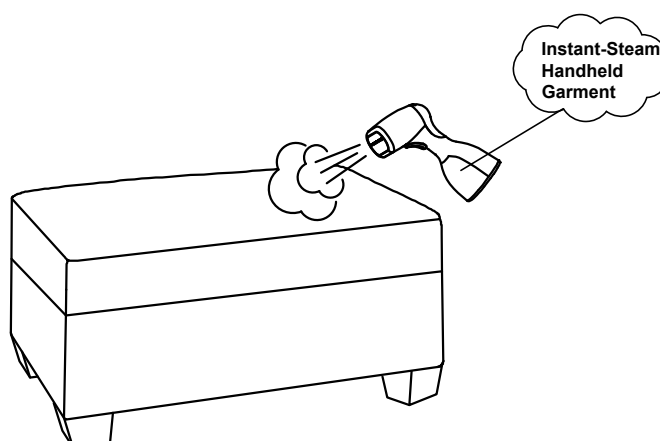


STEP 2: ATTACH THE LEGS INTO THE FRAME (PART "Y") .



TROUBLESHOOT

- 1.Remove hardware from box and sort by size.
- 2.Please check to see that all hardware and parts are present prior start of assembly
- 3.Please follow attached instructions in the same sequence as numbered to assure fast css.assembly .



NOTE : It use Instant-Steam Handheld Garment release wrinkles, refresh upholstery in a few minutes.