

## PTC Heater with Humidification User Manual



Model: HL-2000R11

### Thanks for Choosing

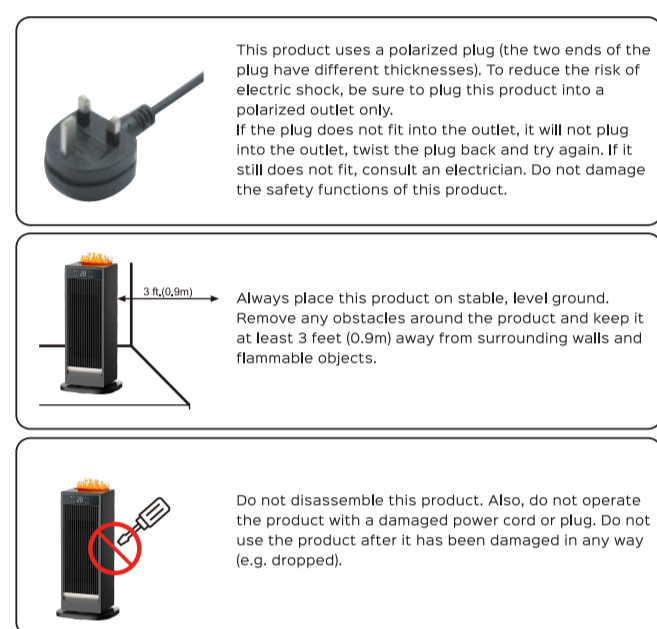
Your support means the world to us. We hope you enjoy our product as much as we did creating it.

### CONTENTS

- IMPORTANT SAFETY INSTRUCTIONS -----0 1
- USING YOUR HEATER -----0 4
- Package Contents -----0 4
- Product Diagram -----0 4
- Specifications -----0 5
- Adding Water to the Water Tank -----0 5
- Control Panel -----0 6
- Remote Control -----0 6
- Display Functions -----0 8
- Other Function -----1 0
- Battery Replacement -----1 1
- CLEANING AND MAINTENANCE -----1 2
- TROUBLE SHOOTING -----1 3

### IMPORTANT SAFETY INSTRUCTIONS

Always use this product with the following precautions to prevent fire, electric shock, and bodily injury.



When using electrical appliances, basic precautions should always be followed to reduce the risk of fire, electric shock, and injury to persons, including the following:

1. Read all instructions before using this heater.
2. This heater is not when in use. To avoid burns, do not let bare skin touch hot surfaces. If provided, use handles when moving this heater. Keep combustible materials, such as furniture, pillows, bedding, papers, clothes, and curtains at least 3 feet (0.9 m) from the front of the heater and keep them away from the sides and rear.
3. Always unplug heater when not in use.
4. Extreme caution is necessary when any heater is used by or near children or invalids and whenever the heater is left operating and unattended.
5. Do not operate any heater with a damaged cord or plug or after the heater malfunctions, has been dropped or damaged in any manner.
6. Do not use outdoors.
7. This heater is not intended for use in bathrooms, laundry areas and similar indoor

locations. Never locate heater where it may fall into a bathtub or other water container.

8. Do not run cord under carpeting. Do not cover cord with throw rugs, runners, or similar coverings. Do not route cord under furniture or appliances. Arrange cord away from traffic area and where it will not be tripped over.
9. To disconnect heater, turn controls to off, then remove plug from outlet.
10. Do not insert or allow foreign objects to enter any ventilation or exhaust opening as this may cause an electric shock or fire, or damage the heater.
11. To prevent a possible fire, do not block air intakes or exhaust in any manner. Do not use on soft surfaces, like a bed, where openings may become blocked. A heater has hot and arcing or sparking parts inside. Do not use it in areas where gasoline, paint, or flammable liquids are used or stored.
12. Use this heater only as described in this manual. Any other use not recommended by the manufacturer may cause fire, electric shock, or injury to persons.
13. Always plug heaters directly into a wall outlet/receptacle. Never use with an extension cord or relocatable power tap (outlet/power strip).
14. If there is a loose fit between the plug and the socket or the plug becomes very hot, the socket may need to be replaced. Check with a qualified electrician to replace the socket.
15. It is normal for the plug and cord to feel warm to the touch. A plug or cord which becomes hot to the touch or becomes distorted in shape may be a result of a worn electrical outlet. Worn outlets or receptacles should be replaced prior to further use of the heater. Plugging the heater into a worn outlet / receptacle may result in overheating of the power cord or fire.
16. The output of this heater may vary and its temperature may become hot enough to burn exposed skin. Use of this heater is not recommended for persons with a high sensitivity to heat or an inability to react to avoid burns.
17. Ensure the heater is on a stable, secure surface to eliminate the potential of tipping it over.
18. Make sure that no pieces of polystyrene or other packaging material have been left between elements of the appliance. It may be necessary to pass over the appliance with a vacuum cleaner.
19. Do not attempt to modify or repair the product by yourself. Doing so could void the warranty and cause damage or personal injury. Only a repair technician may disassemble or repair this product.
20. Choking hazard - This remote control unit contains a small battery. Keep the remote control away from children and do not swallow the battery. If the battery is swallowed seek medical advice at once.
21. If the machine is not working as it should, has received a sharp blow, has been dropped, damaged, left outdoors, or dropped into water, do not use and contact Customer Support.

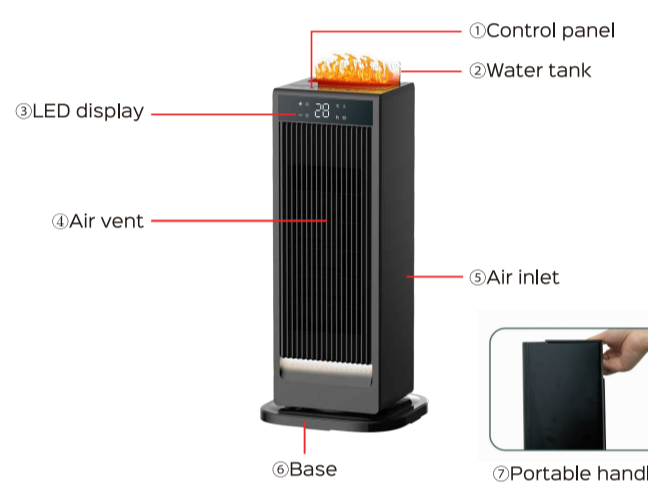
● **NOTE:** There may be a trace of smoke or odor when the unit is first operated. This indicates that a drop of oil fell on the heating coil during the manufacturing process. It will quickly evaporate and should not reoccur.

● **IMPORTANT:** This appliance has a polarized plug (one blade is wider than the other). To reduce the risk of electric shock, this plug is intended to fit in a polarized outlet only one way. If the plug does not fit fully in the outlet, reverse the plug. If it still does not fit, contact a qualified electrician. Do not attempt to rig this safety feature.

### USING YOUR HEATER

- Package Contents**
- 1\* PTC Heater With Humidification
  - 1\* Remote Control
  - 1\* Transparent Acrylic Panel
  - 1\* User Manual
  - 1\* Description of Power Plug

#### Product Diagram

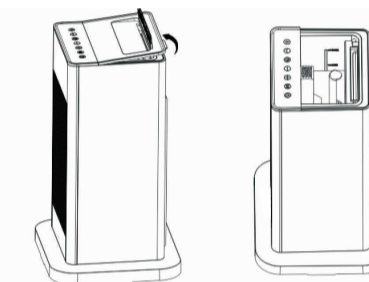


#### Specifications

Model	HL-2000R11
Size	18"17.5"43cm
Rated Power	2000W
Input	220V-240V
Weight	1.7KG
Temperature Range	15°C-45°C

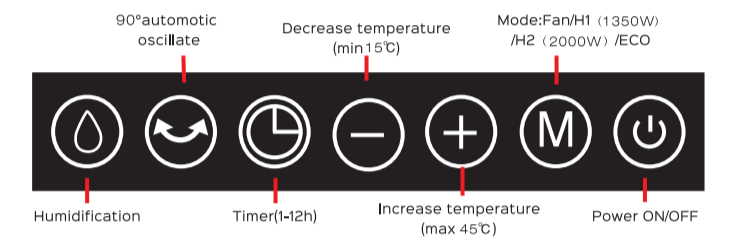
#### Adding Water to the Water Tank

1. Lift the lid of the water tank and pour 250ml of water.
2. Place the lid back and it will operate normally.



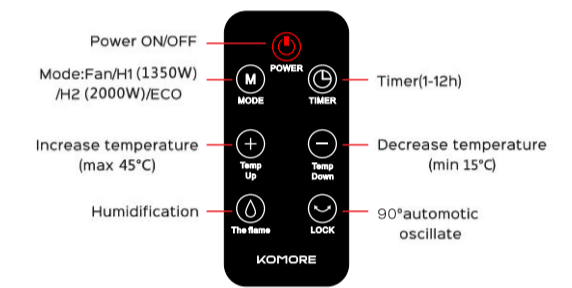
\*Fill the humidifier with water for approximately 3 hours of continuous usage. Actual usage time may vary from person to person.

#### Control Panel



**NOTE:** Thermostat adjustment in ECO mode is from 15°C to 45°C (increase by 1°F). In other modes, the "Temperature +" and "Temperature -" buttons are not available.

#### Remote Control



**Power On/Off**  
Touch to turn the heater on or off.  
**Note:** -When the heater is plugged into the electric outlet, the power indicator will light in red. -Once turned off, a 30-second countdown will show up on the display as the fan will continue to run for 30 seconds to blow out the remaining heat.

**Humidification**  
Touch to cycle through Humidification ON/Ambient light ON/Humidification OFF/Ambient light OFF.  
-The humidifier function will automatically off when the water is run out.

**Oscillation**  
Touch to turn on or off oscillation. The angle of oscillation is 90°.

**Auto-Off Timer**  
-When the heater is on, touch to set a timer(0-12h). After the timer ends, the heater will turn off automatically. -To cancel, set the timer to 0 hour.

**Temperature Setting**  
-In ECO mode, touch (+) or (-) to adjust the set temperature.  
**Note:** In ECO mode, the heater will turn off automatically when the set temperature has been reached. If your heater turns off frequently, please raise the set temperature, or switch to Power Heat mode.  
**Note:** In other modes, the "+" and "-" buttons are not available.

**Mode Settings**  
Touch to cycle through ECO-H1(1350W)-H2(2000W)-FAN In ECO mode, the heater will automatically select its optimal heating power, depending on the difference between the set temperature (15-45°C) and ambient temperature.  
**Note:** -When the ambient temperature reaches the set temperature, the heater will turn off automatically in 30 seconds. -When the ambient temperature drops below the set temperature, the heater will operate on medium or high power (1350W or 2000W), depending on the difference between the two temperatures.

**Display Functions**

1. Insert the power plug into the power outlet, the display will show.
2. Pressing the Power ON/OFF button starts heating in ECO mode.
3. Pressing the mode button to run at low heating level.
4. Pressing the mode button again to run at high heating level.

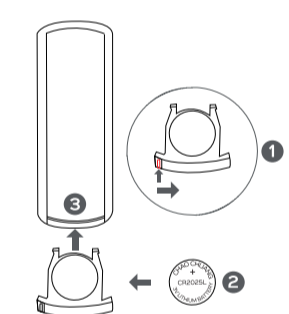
5. Pressing the mode button again to run at natural wind mode.
6. Pressing timer to set a automatic shutdown for 1-12 hours.
7. Pressing @ turns the humidification ON/OFF.

Panel Turn-Off: The LED screen will automatically turn off after 3 minutes of inactivity. It can be turned on again by pressing any button.

#### Other Function

<b>Tip-over Protection</b>	If the product tilts forward or backward, the built-in automatic power-off function at the base will activate. Hence, it is crucial to use this product on a level surface. If you wish to use the product after a tip-over, simply place it back on a flat surface, press the power ON/OFF switch, and readjust the settings to your preferences.
<b>Overheating Protection</b>	When the heating element reaches a certain temperature, the overheat protection function is automatically activated to lower the temperature.

#### Battery Replacement



1. Press the locking button to pop out the battery holder.
2. Replace with the same battery type with the (+) side facing up.
3. Push in the holder until securely locked into place.

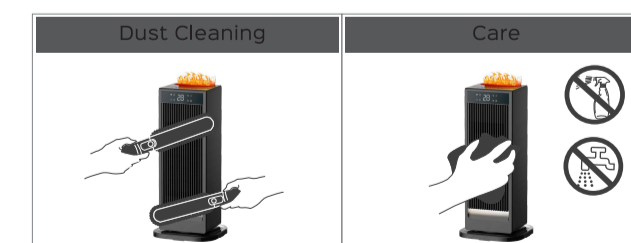
**NOTE:** If the indicator on the remote control doesn't turn on anymore, please consider replacing the battery.

**WARNING**  
Chemical Burn Hazard. Keep batteries away from children.

- This product contains a lithium button/coin cell battery. If a new or used lithium button/coin cell battery is swallowed or enters the body, it can cause severe internal burns and can lead to death in as little as 2 hours. Always completely secure the battery compartment. If the battery compartment does not close securely, stop using the product, remove the battery, and keep it away from children. If you think batteries might have been swallowed or placed inside any part of the body, seek immediate medical attention.
- The batteries must be disposed of properly, including keeping them away from children. Even used cells may cause injury.

### CLEANING AND MAINTENANCE

We recommend cleaning the heater at least once during the operating season and before the off season. This will ensure optimal performance.



Always disconnect the appliance from the mains by switching it off and removing the plug from the power outlet before cleaning.

- Use only a soft cloth to gently wipe the outer surfaces of the heater clean.
- Do not use any cleaning agents or detergents.
- Never immerse the heater in water and never allow water to drip into the motor housing. Be sure not to wet the heating element and the switches.
- For storage, you may leave the heater covered to protect it from dust. Store it in a cool, dry location and arrange the cable away from traffic areas so that it will not be tripped over or damaged.

**Caution:**

- Do not allow water to run into the interior of the heater as this could result in a fire or electric shock hazard.
- Any other servicing should be performed by an authorized service representative.
- Except cleaning, any other servicing should be performed by an authorized service representative.
- Carefully fold the power supply cord and tie it up with a cord, then put the heater into the packing box. Keep it in a cabinet away from any hot or wet location.

### TROUBLE SHOOTING

If your problem is not listed, or the problem still persists, please contact Customer Support at support@proultd.

Problem	Possible Causes	Solution
Malfunction codes on LED display	E3 - Tip-Over Protection	Place the heater back on a flat, level and stable surface
	Power cord is not properly plugged in	Connect the plug to a powered electrical outlet
	Overheat protection has been activated	Unplug and allow it to cool Remove any objects on or near the heater
Heater does not start	Ensure that your circuit breaker or fuse is working properly	
	No power is passing through the unit	Ensure that your heater is placed on a flat and even surface
	The set temperature is lower than the ambient temperature	Ensure that the temperature is set to be higher than the ambient temperature
	The temperature exceeds the threshold of the thermal cutoff	Turn off and unplug the unit. Allow it to cool and plug into the electrical outlet again
The set temperature is lower than the ambient temperature	The heater is tipped over	Place it on a flat, level and stable surface
	In ECO mode, the heater will turn off automatically when the set temperature has been reached	This is normal. If your heater turns off frequently, please raise the set temperature, or switch to Power Heat mode

\* Please have your order confirmation number ready before contacting Customer Support.

