


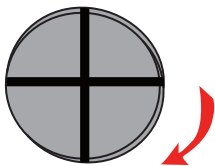
210MM

20MM

SET UP INSTRUCTION

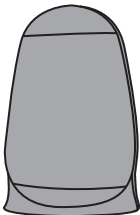
 **WARNING : The tent opens forcefully**  
Be cautious when opening by making sure you release the secured webbing slowly away from FACE, BODY, and others.

①

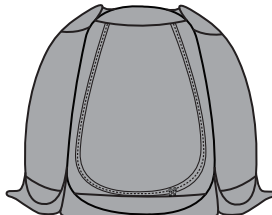


Slide the black band off.  
(Store the band somewhere you will remember. You will need the band when folding the tent later).

②

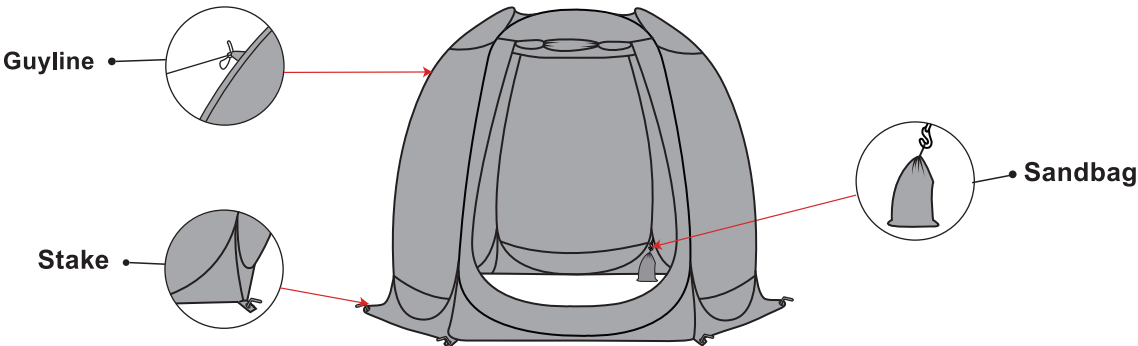


③



Open each panel and spread each side equally for best stability.

④



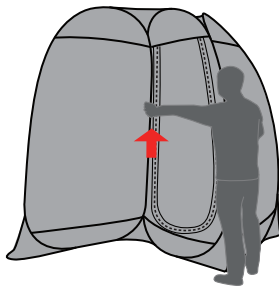
Stablize tent with metal stakes in each corner through the metal rings. You need sandbags and guylines to get more stability and windproof.

TAKE DOWN INSTRUCTION

①

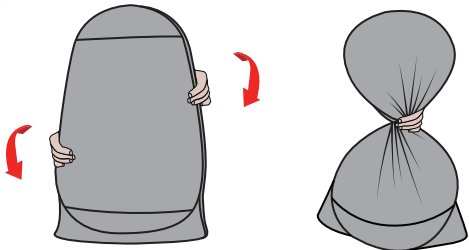


②



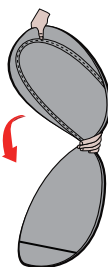
Push side panels inside to overlap each other.

③



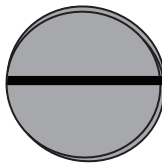
Twist the circles into an 8 shape.

④



Fold two sets of small circles face to face together.

⑤



Slide the band around the tent to hold in place for storage.

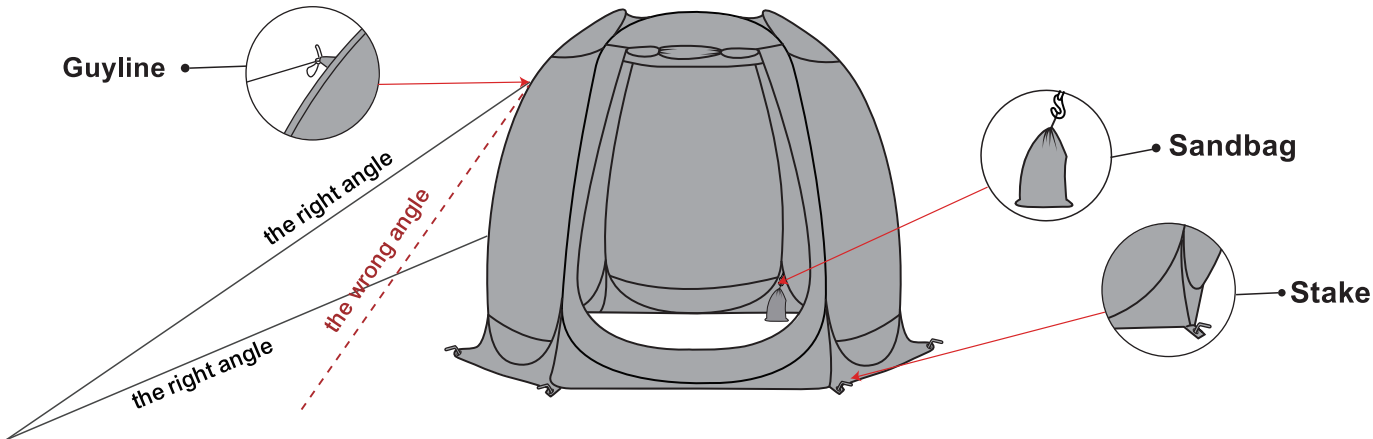
297MM

210MM

20MM

### IMPORTANT NOTICE

- ① To get complete stability and the best wind resistance, you will need to do ALL of the following things:
- To prevent your screen tent from blowing away and collapsing, make sure to properly use ALL included guylines. The correct way is both as following.
    - (1) Guylines are attached to the top AND bottom of every outside corner.
    - (2) Guylines are meant to be spread out away from the gazebo, not close to the base.
  - Use the sandbags. You can either tie it with guylines or put it inside the bottom pockets at each corner. But please note that it is not enough to use sandbags only. Sandbags can only provide stability in the vertical direction, not in the horizontal direction. which can only be secured by guylines.
  - You need to pull all TOP and BOTTOM guylines in right angles to get 360 degrees protection. Failure to use all guylines correctly may cause damages that are not covered by the warranty.
  - Stabilize the tent with metal stakes in each corner through the metal rings if possible.



- ② Do NOT recommend use when the wind force reaches level 6 (10.8-13.8 m/s).
- Since it is hard to know the wind speed, we do not recommend using the tent on a balcony in a high building.
  - For the deck on the second floor or rooftop, please double secure the stability and make sure not to use over windproof limitation.
- ③ This screen house is not waterproof. It is easy to push the top fabric out to get away from any collected rainwater on the roof. Optional purchased Alum pole may prevent water from collecting on the roof.

1931 Santa Anita Avenue. South El Monte. CA 91733

Tel : (626) 542 - 3420

Email : bettertent@gmail.com

297MM