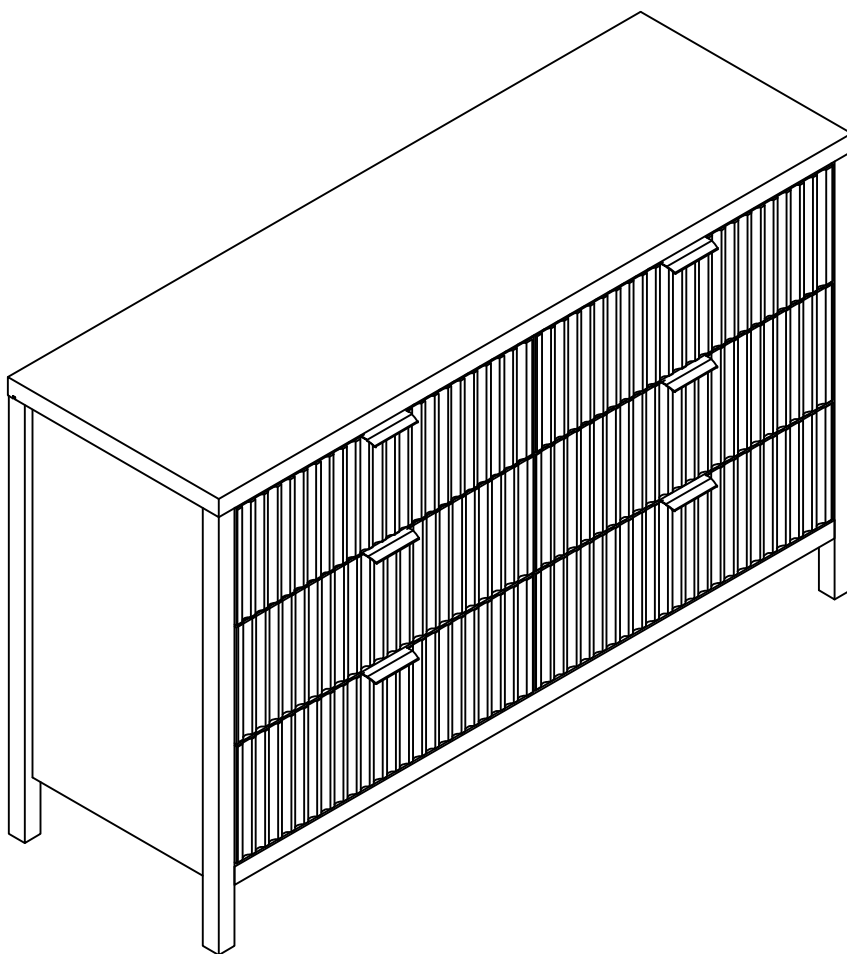


# Installation Instruction



# Assembling

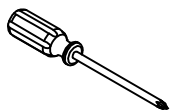
Estimated time for assembly



**45 : 00**

What you need

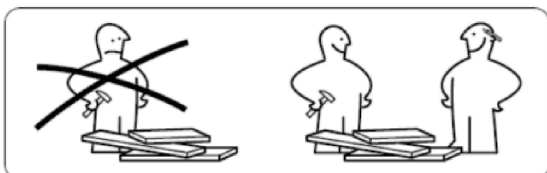
- Use the packaging carton as a working surface to prevent product damage during assembly
- Phillips head screwdriver



Weight Limitation



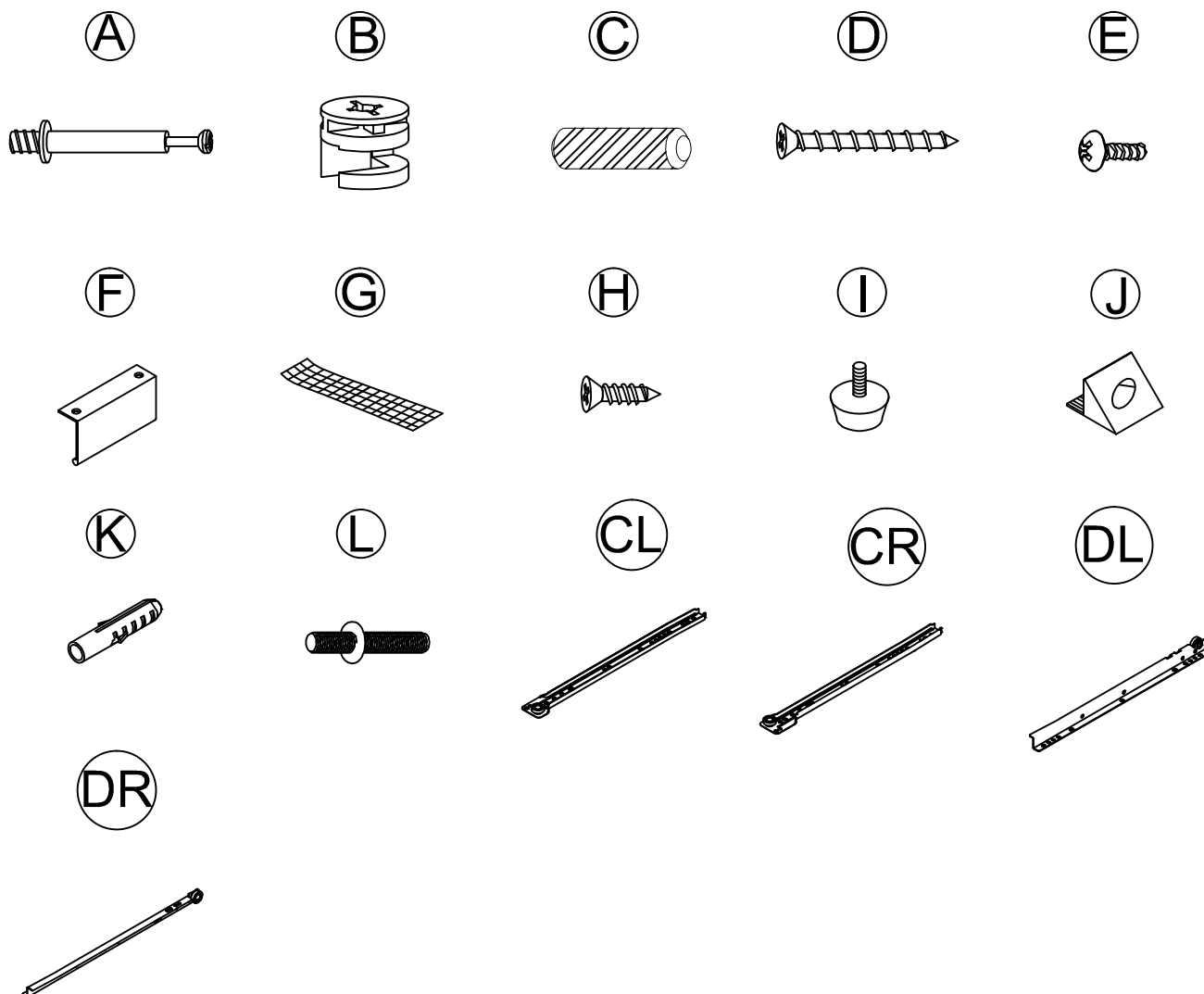
**100** | **35**  
lbs table top      lbs per



# What' included

Code Description	Qty
A Cam Bolt M6X35MM	38
B Cam Lock 15X10MM	38
C Wooden Dowel M8X30MM	8
D Screw M4X40MM	28
E Screw M3.5X14MM	2
F Metal shake handhandle	6
G Nylon Strap	2
H Screw M3.0X14MM	94
I Adjustable Leveler	1
J The back button	10
K Anchor	2
L Slub screw M6*30MM	1
CL Left mother extended orbit	6
CR Right mother extended orbit	6
DL Left public extension track	6
DR Right public extends track	6

# The Hardwares



## IMPORTANT:

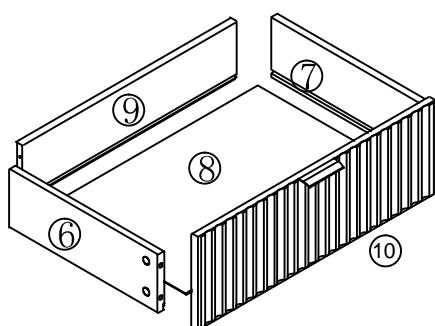
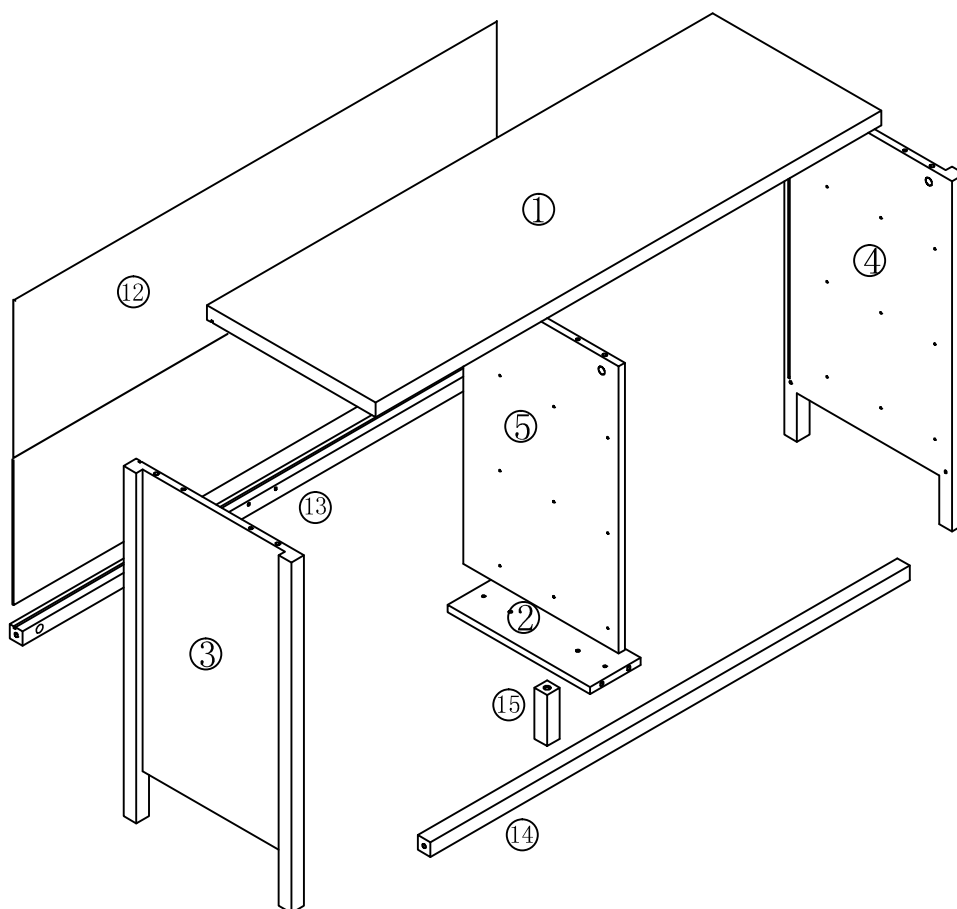
1. Do not tighten bolts / screws completely until all bolts / screws are lined up and inserted into holes.
2. Do not over tighten screws and bolts to avoid stripping
3. Please use hand tools to assemble this product. Do not use power tools.

# Included Accessories

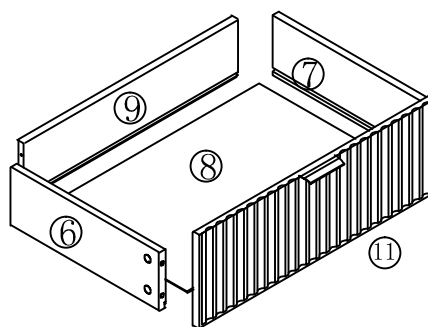
---

Code	Description	Qty
1	Cabinet Top	1
2	Bottom Panel	1
3	Left Side Panel	1
4	Right Side Panel	1
5	Neutral plate	1
6	Drawer left panel	6
7	Drawer right side panel	6
8	The drawer bottom	6
9	After the drawer board	6
10	Left pull panel	3
11	Right pull panel	3
12	Backboard	1
13	Back draw	1
14	Front tie	1
15	Adjustable support feet	1

# The Accessoriess

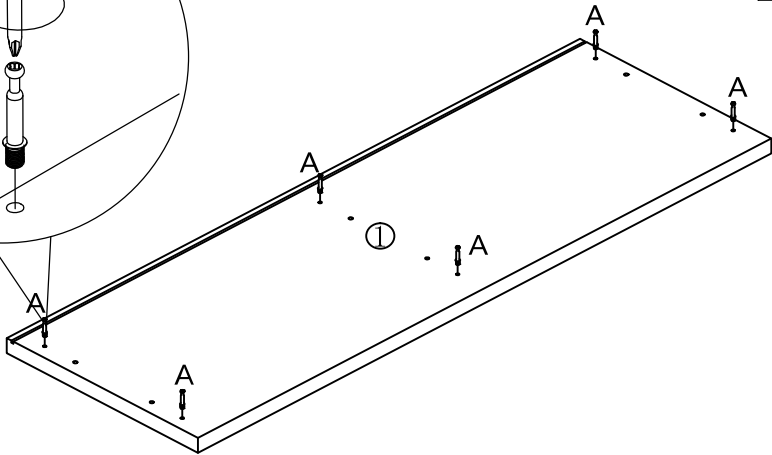
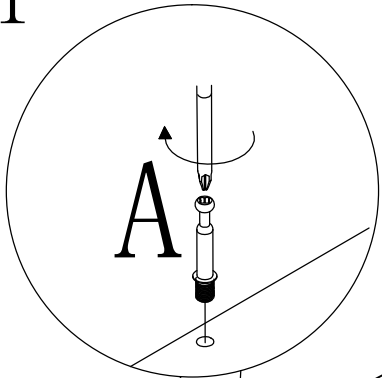


X 3



X 3

# Step 1



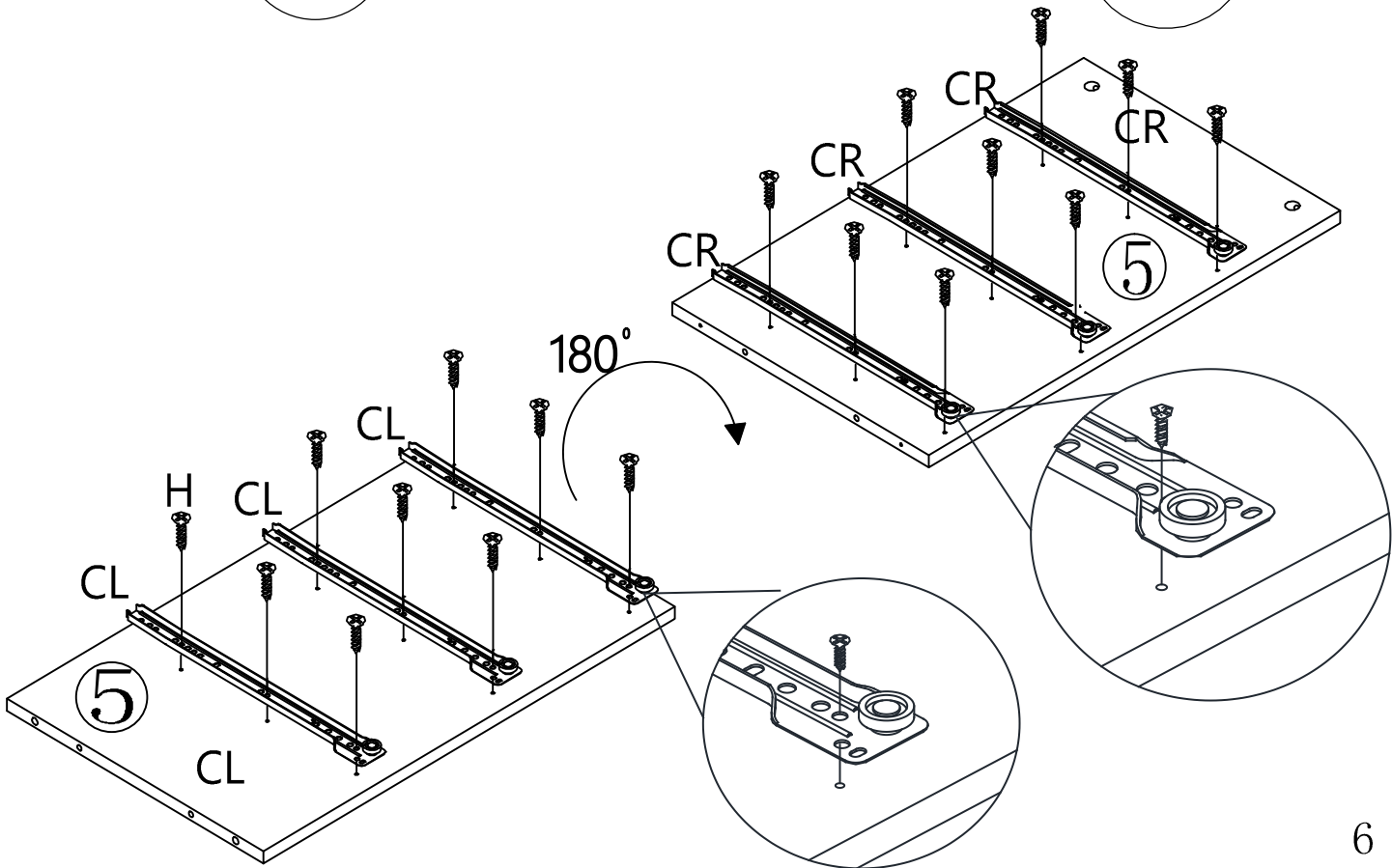
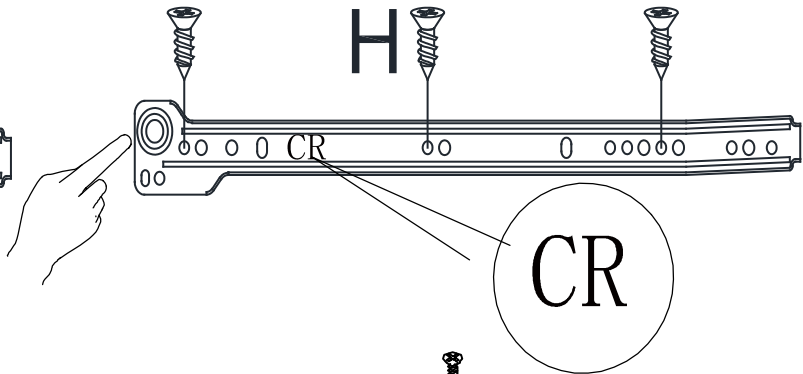
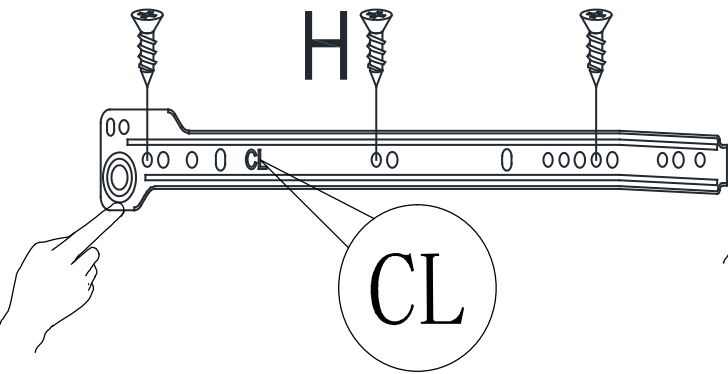
A	x 6

# Step 2

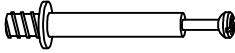
H	x 18


CL	x 3


CR	x 3




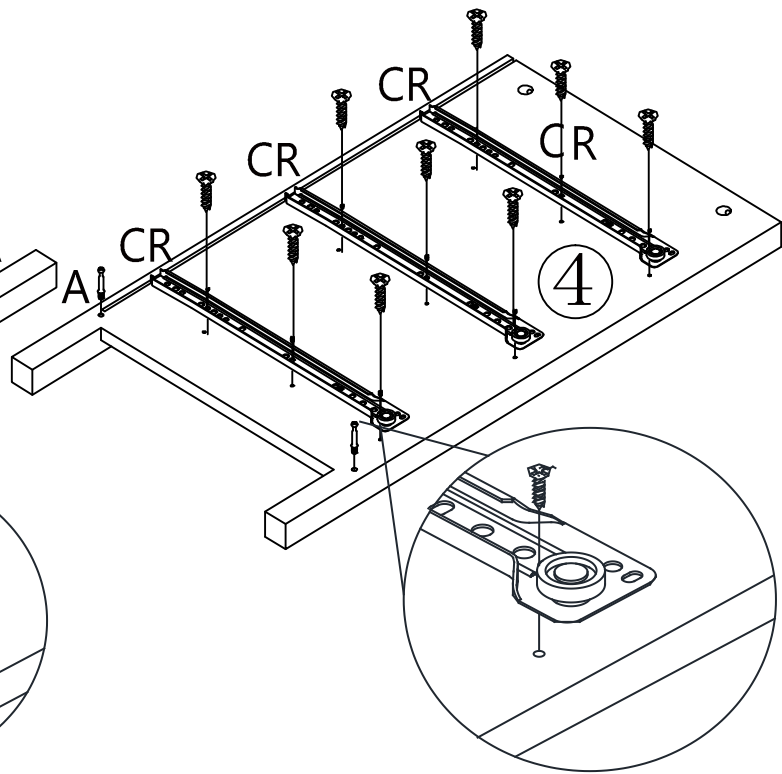
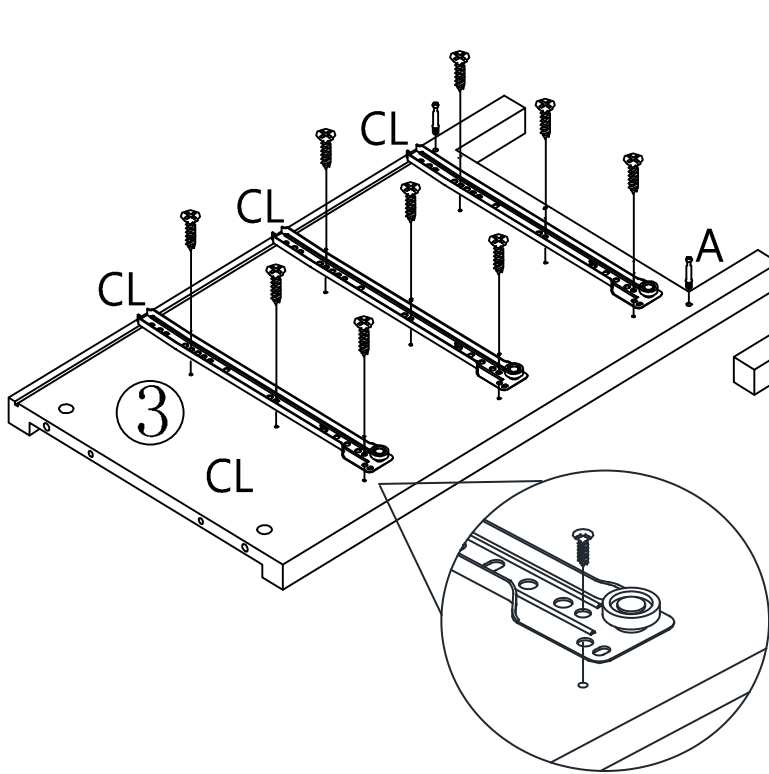
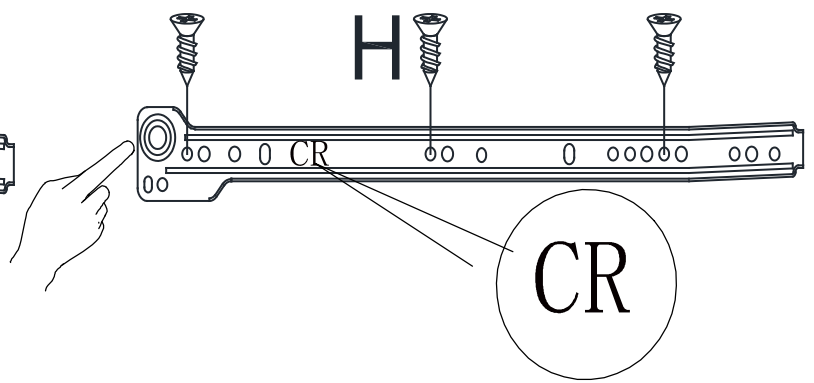
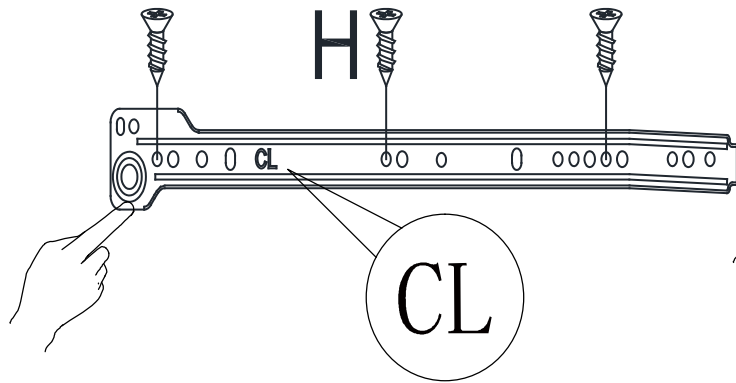
# Step 3

A	x 4
	

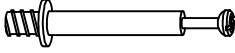
H	x 18
	

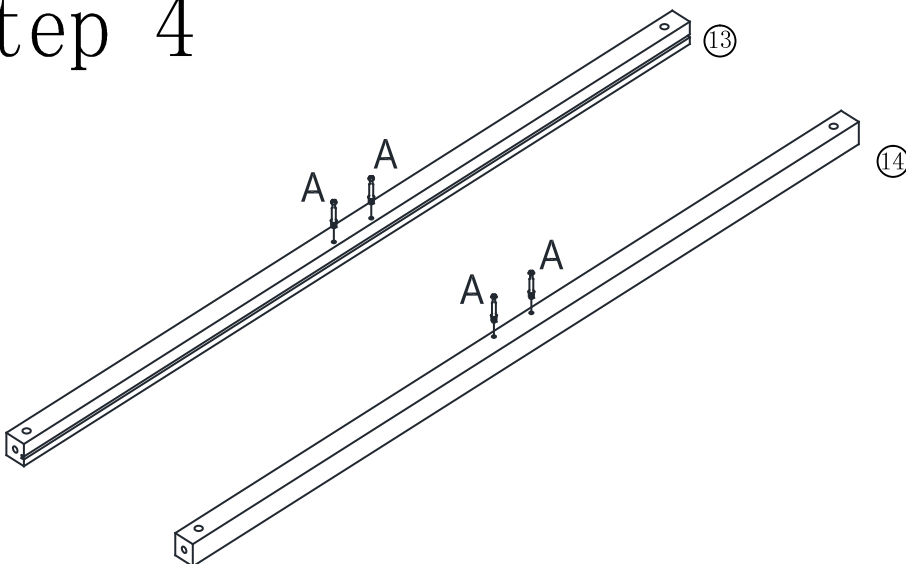
CL	x 3
	

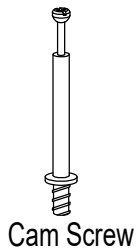
CR	x 3
	



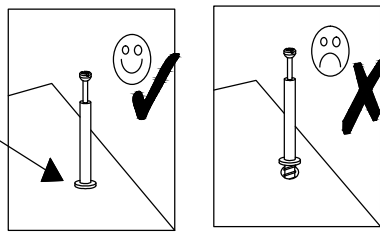
# Step 4

A	x 4
	

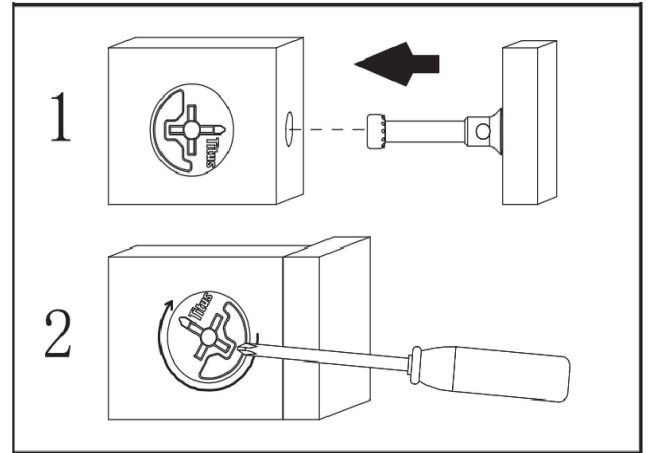
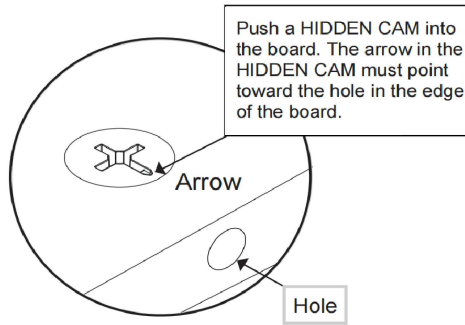
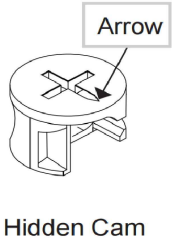




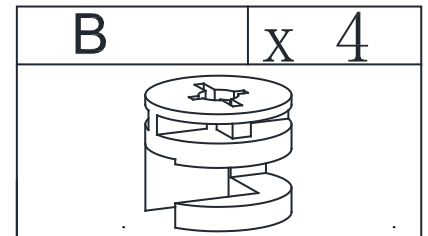
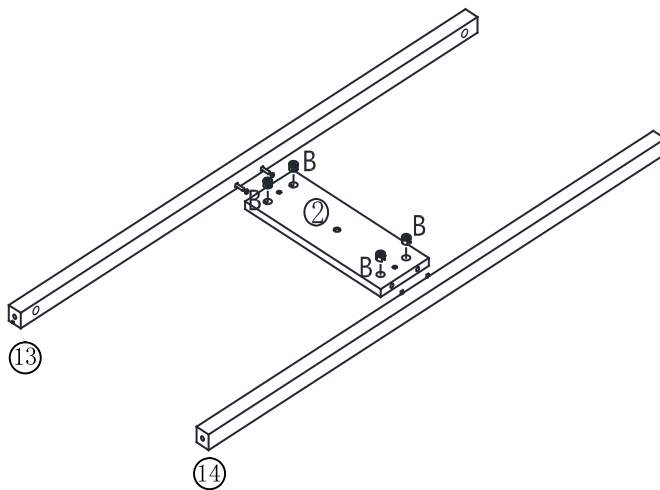
Clockwise rotate the CAM SCREW until the shoulder is against the surface of the board.



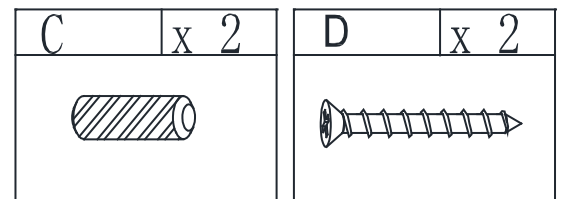
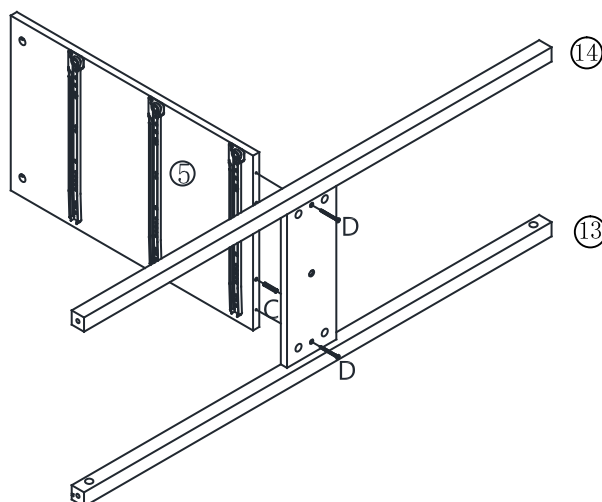
Insert the CAM SCREW into the HIDDEN CAM. Clockwise rotate to tighten the HIDDEN CAM.



## Step 5

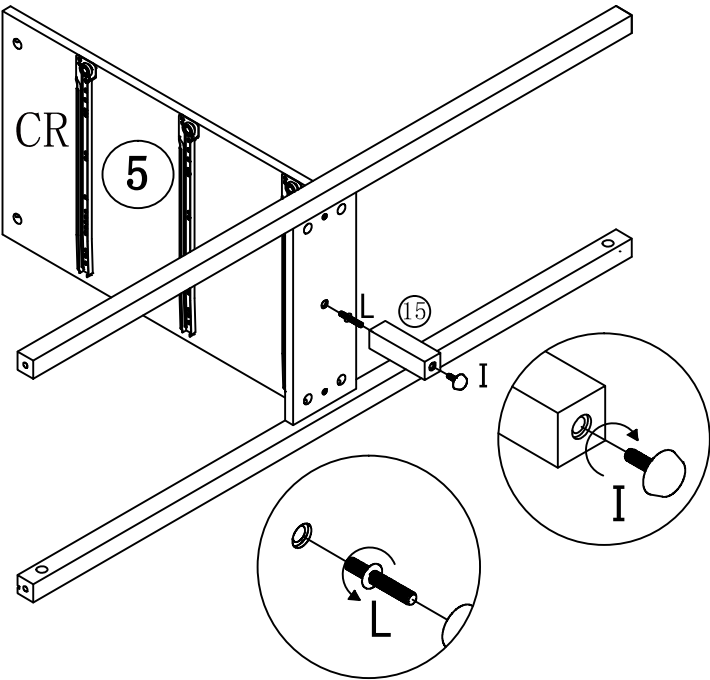
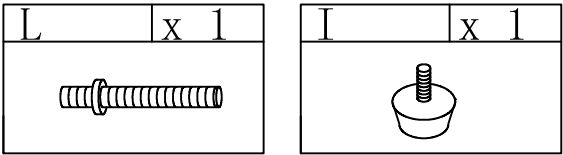


## Step 6

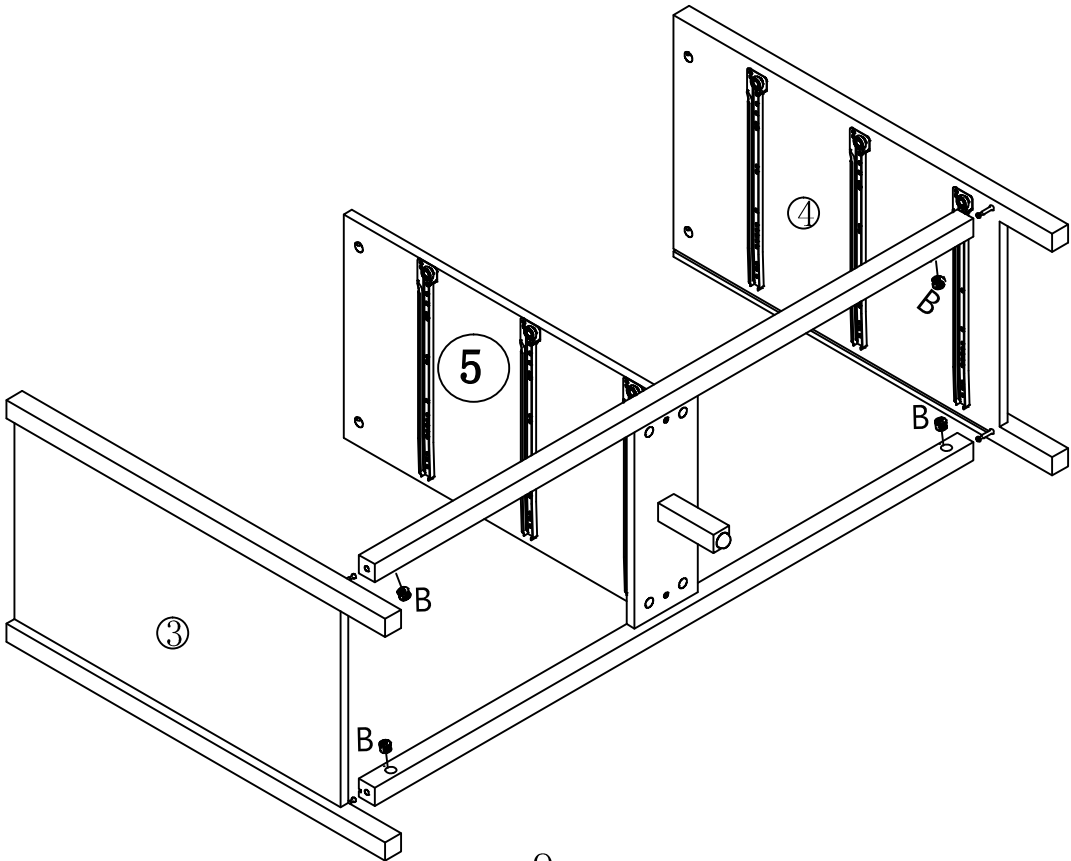
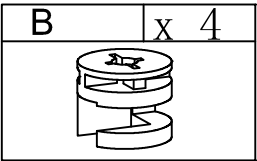




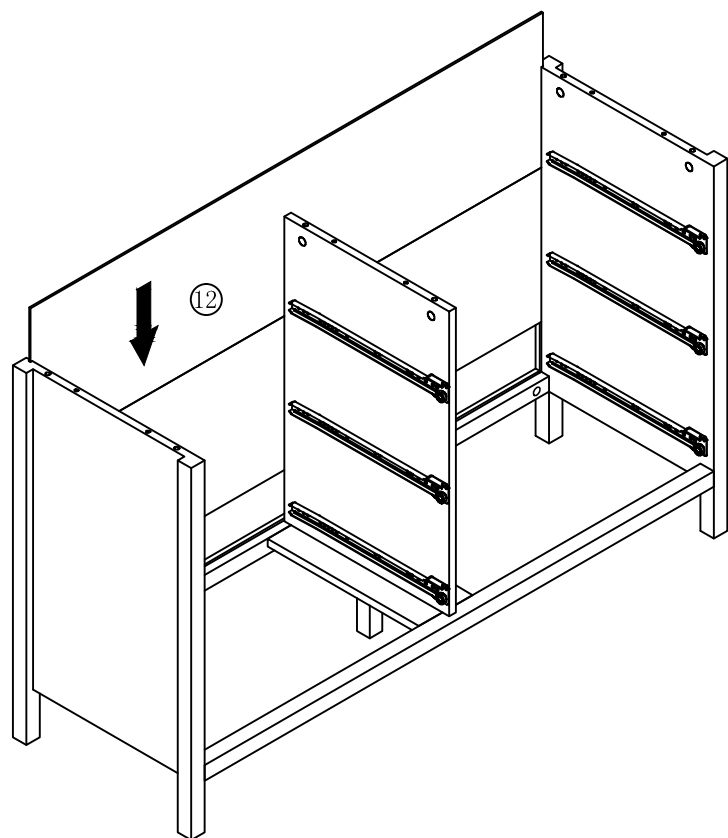
Step 7



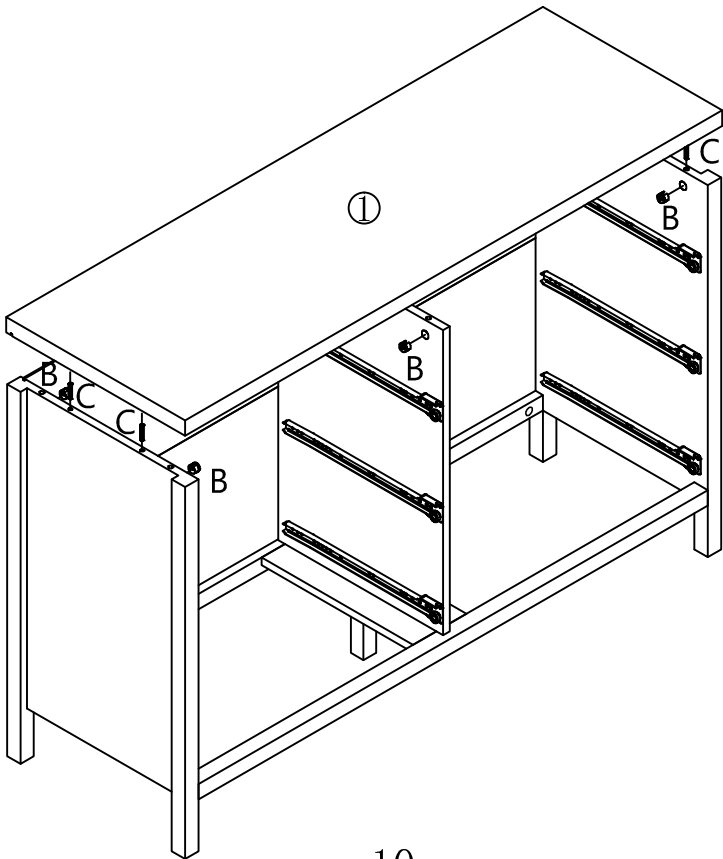
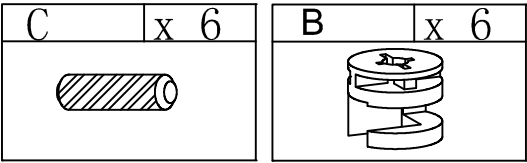
Step 8



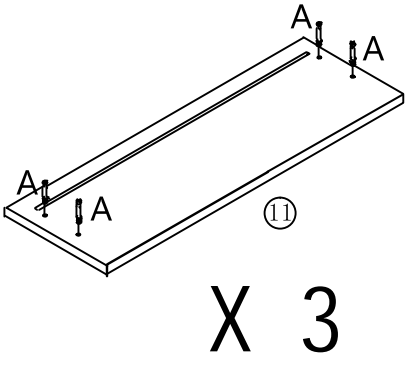
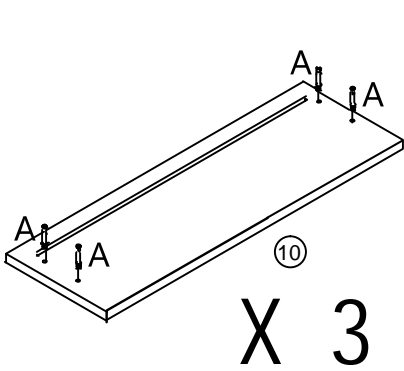
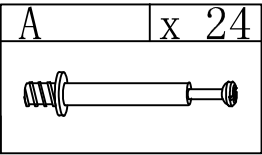
# Step 9



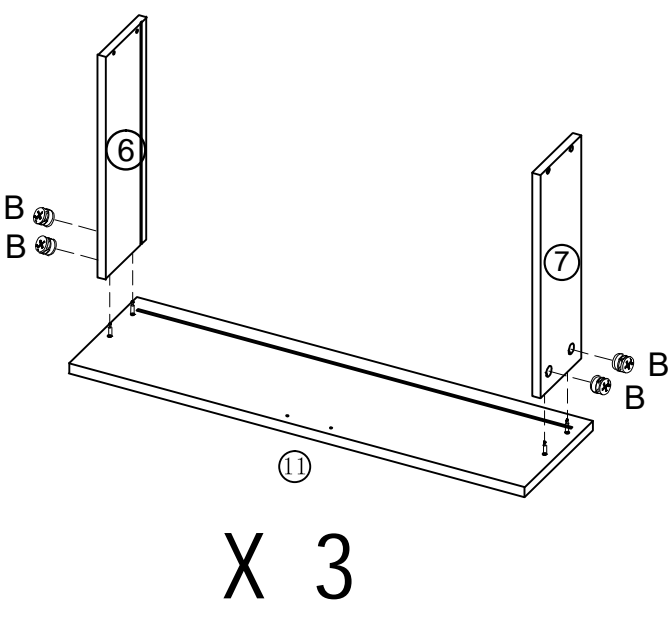
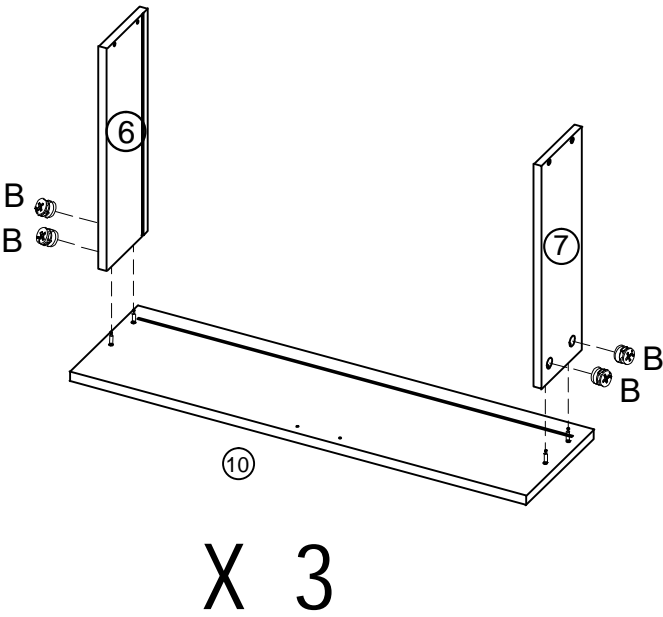
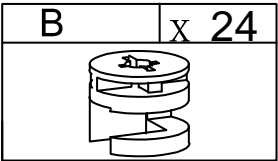
# Step 10



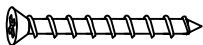

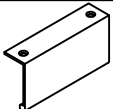
Step 11

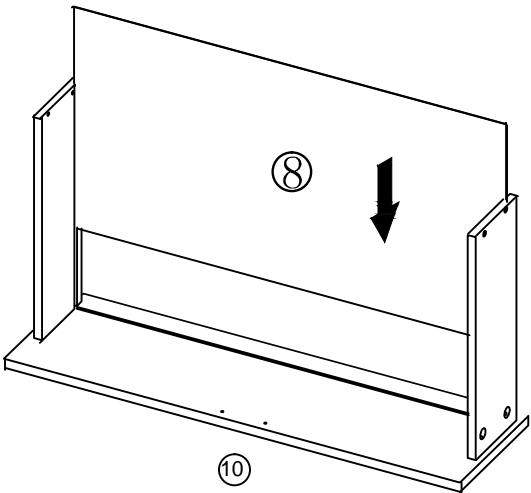


Step 12

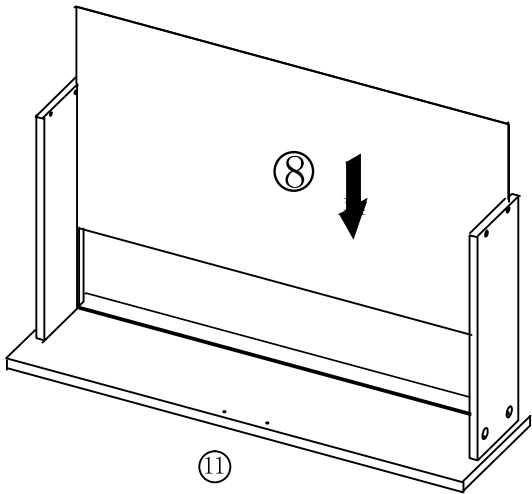


Step 13

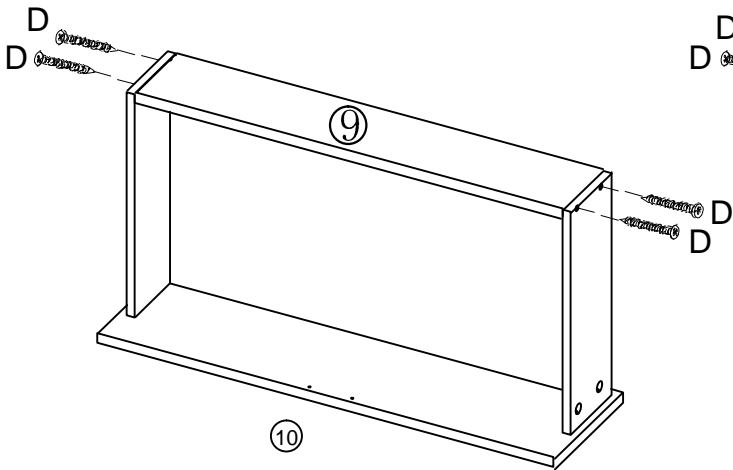
D	x 24	H	x 12	F	x 6
					



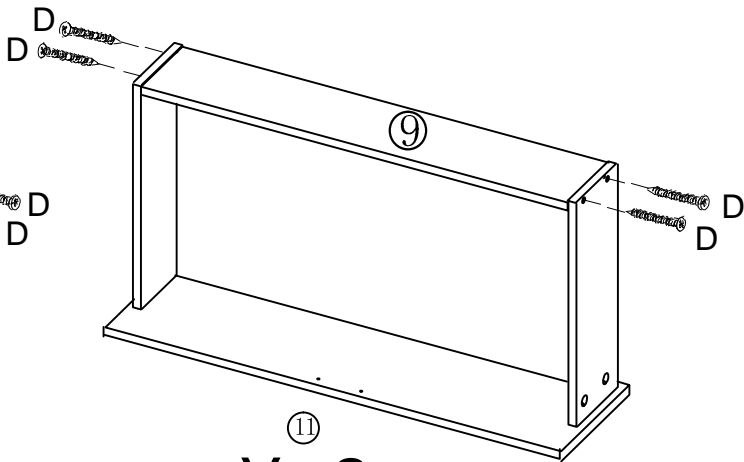
X 3



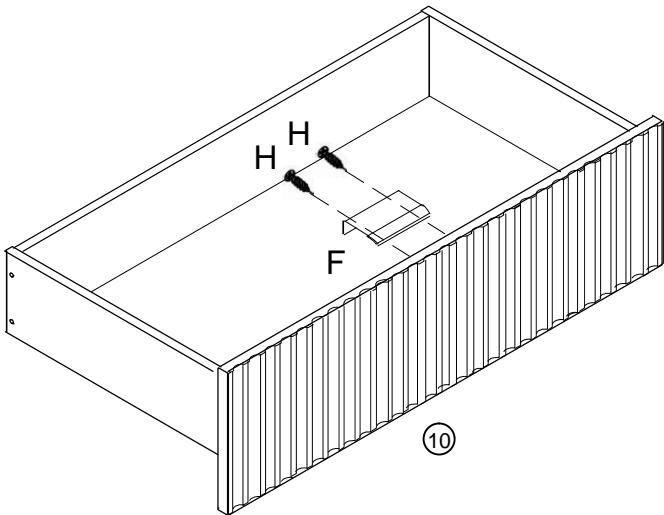
X 3



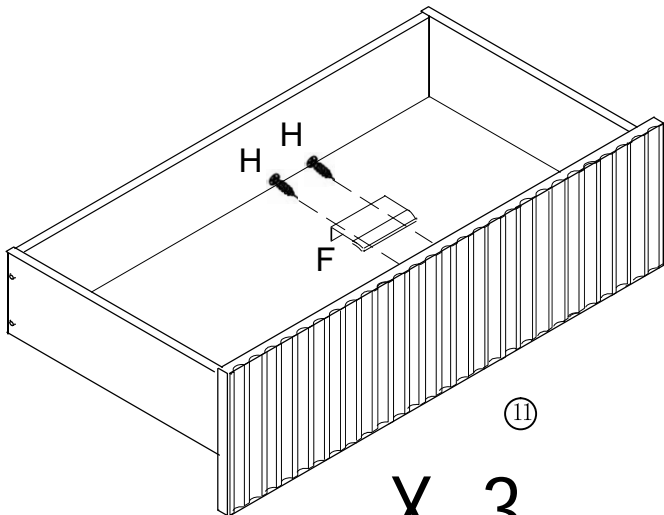
X 3



X 3



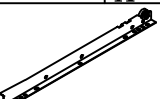


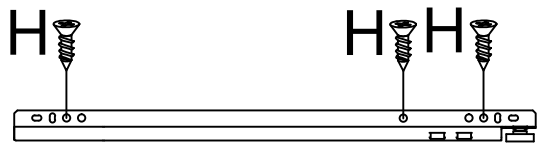
X 3



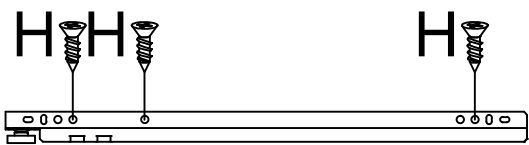
X 3

Step 14

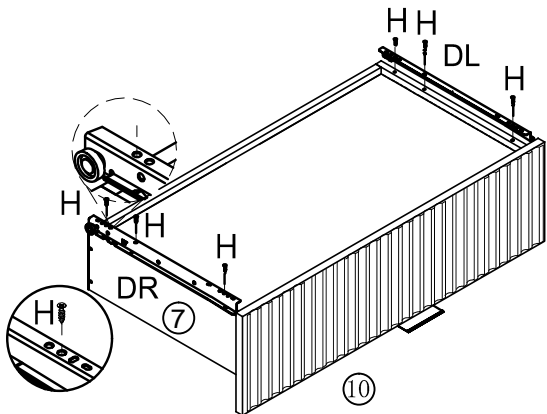
H	x 36	DL	x 6	DR	x 6
					



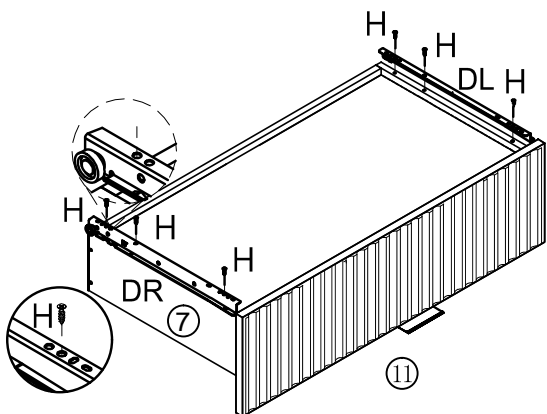
DL



DR

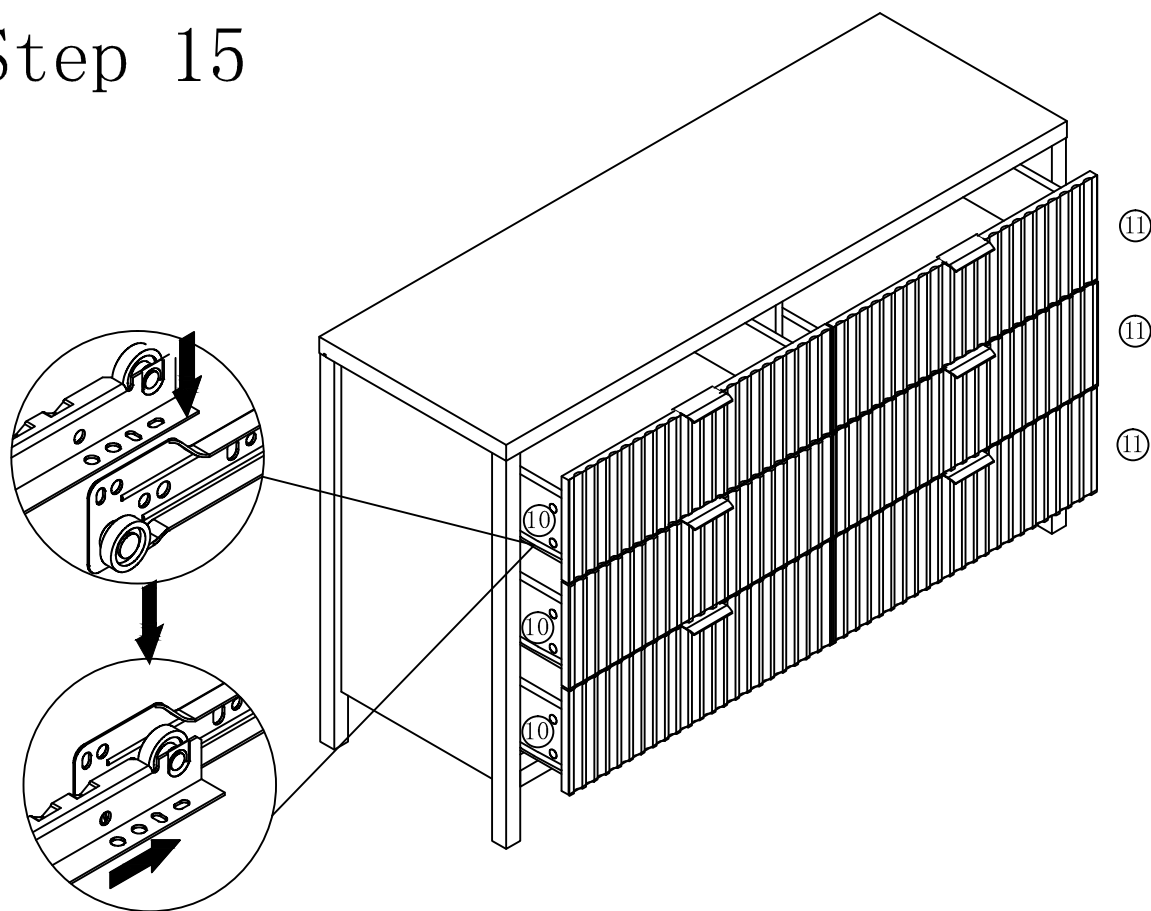


X 3



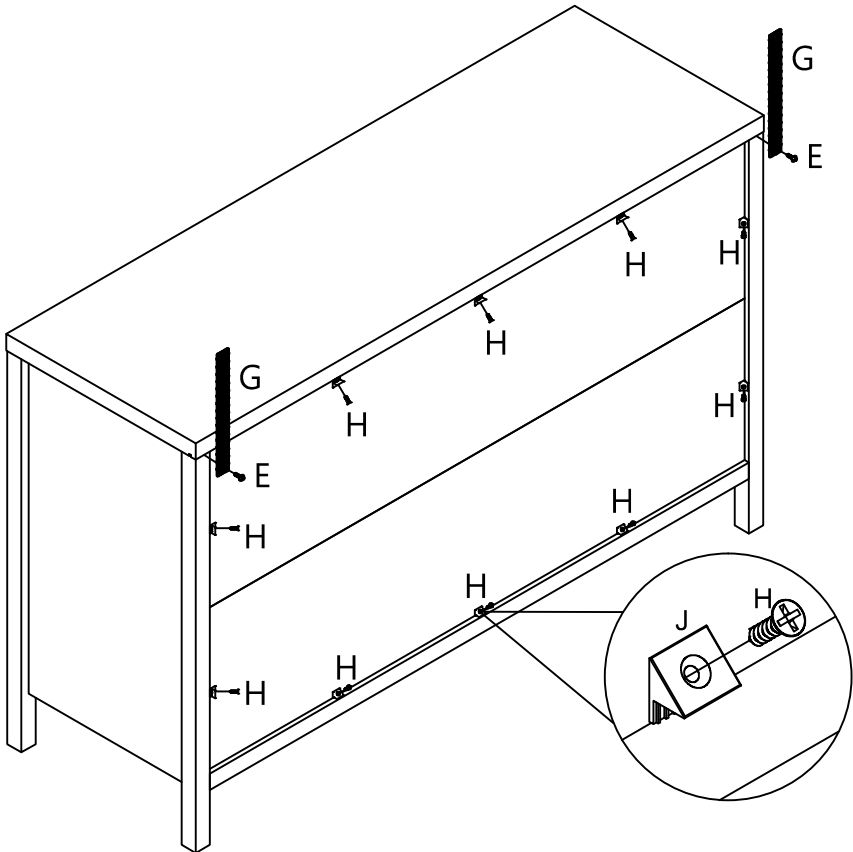
X 3

Step 15



Step 16

G	x 2	H	x 10	J	x 10	E	x 2



# Step 17

