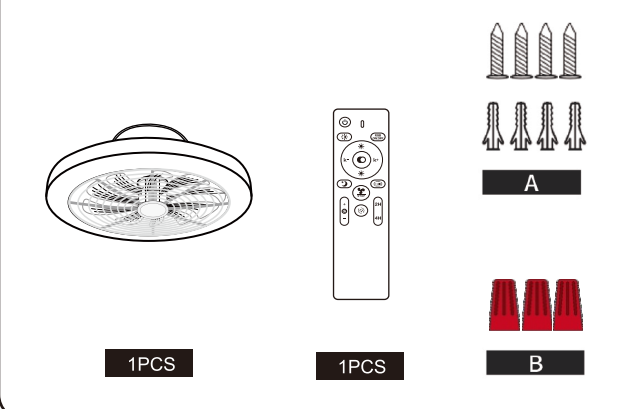


Smart RGB Ceiling Fan Light

Product Installation Instructions

Package



Detailed Description:

Thank you for purchasing our products. Before installing the product, please read the instruction manual carefully and keep it for future use. Thank you.

1.Product Parameters

Name:	Smart RGB Ceiling Fan Light
Size:	500*160MM
Wattage:	48W+RGB15W+DC16W
Lumens:	3840LM
Color Temperature:	3000K+6500K+RGB
Lifetime:	30000H
Volts:	110V-240V
CRI	>80RA
Certification:	CE FCC ROHS

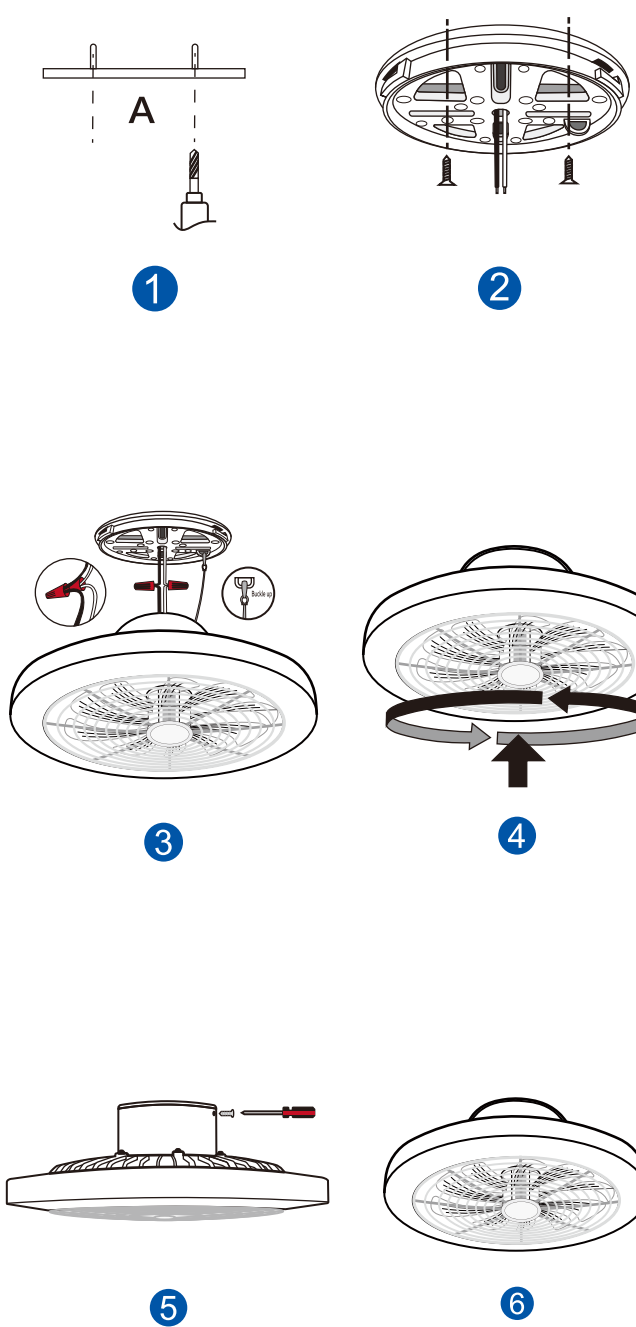
2.Memory function of the ceiling light

After the light is turned off and turned on again, the light will turn on according to the color and brightness set when the light was turned off last time.

3.Safety Tips

- ① For safety reasons, it is recommended to have a professional electrician install them.
- ② Do not touch the power of the luminaire after connecting the circuit.
- ③ In case of any accident, disconnect the power first, then ask an electrician to check and fix it.

INSTALL

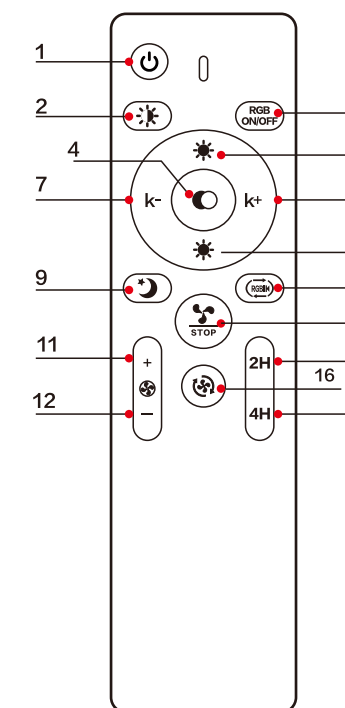


EN

1	⏻	ALL OFF
2	⏻	Switch Main Light
3	⏻	RGB ON/OFF
4	☾	Light source switching
5	☼	Brightness+
6	☼	Brightness-
7	⏻	Color Temperature+
8	⏻	Color Temperature-
9	☾	Night Light
10	⏻	RGB Adjusted Only
11	⏻	Wind Speed+
12	⏻	Wind Speed-
13	⏻	Fan Switch
14	2H	2 hours timing
15	4H	4 hours timing
16	⏻	Wind blade reverse

Instructions for using the remote control

Turn on the ceiling fan light, press the "1" button quickly within 3 seconds and the ceiling fan light will blink to indicate successful pairing of the remote control.



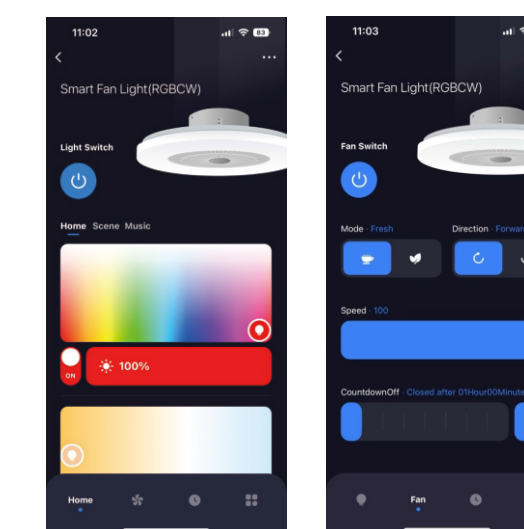
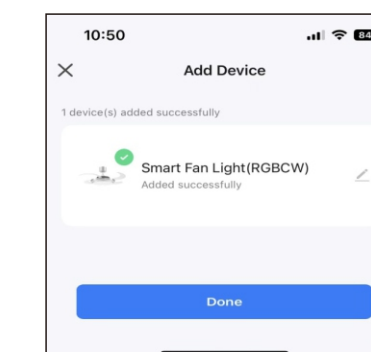
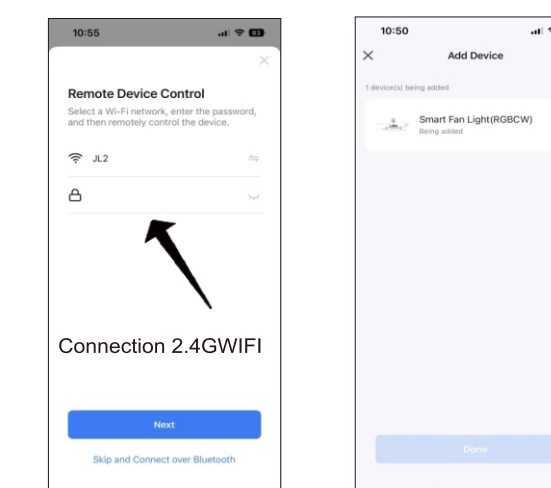
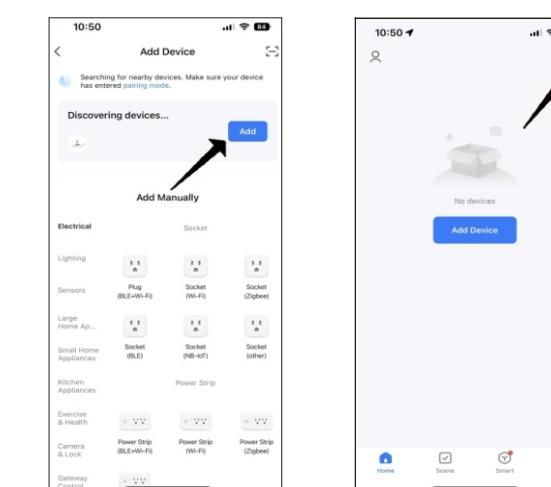
NOTICE

This remote controller does not pack batteries, please put 2x1.5v batteries into it before use.

Download "Smart Life" app

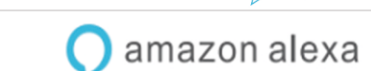


1. Register an account to choose your country.
2. Connect your phone to WIFI (2.4Ghz) and turn on Bluetooth.
3. Repeat on/off five times and the ceiling fan light will start blinking.
4. Open the APP and follow the steps to match the network.



Enable Smart Life skill in Alexa APP

Open your Alexa APP



Binding your app account to your Amazon account allows you to control Alexa-enabled devices through Amazon Echo speakers(ex. "Alexa, turn on light.")

Sign In With Amazon