

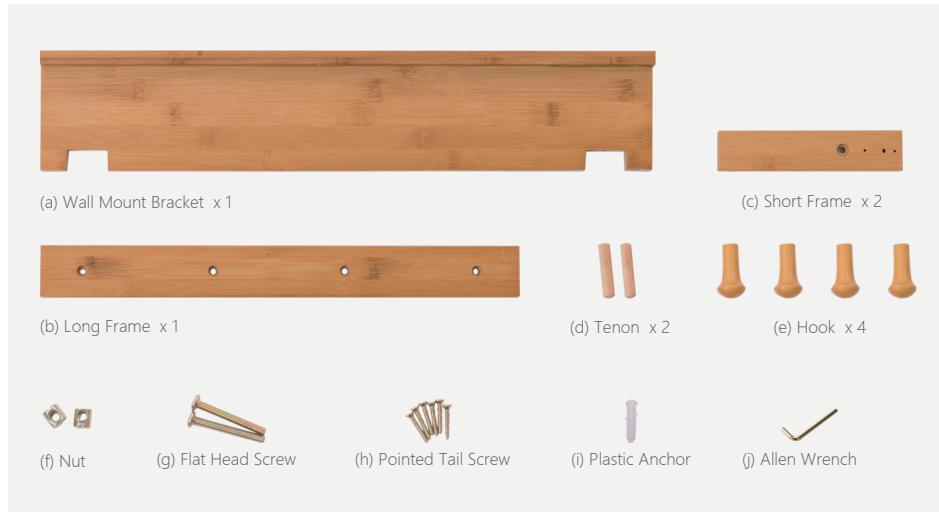
## USER GUIDE

# BAMBOO COAT RACK

Natural / Stylish / Unique



## HARDWARE



## ⚠ ATTENTION

- ① Please always read and follow the assembly, maintenance and operating instruction.
- ② Do not discard any of the packaging until you have checked that you have all the parts and pack of fittings.
- ③ Keep children away during assembly. This item contains small parts which can be swallowed by children.
- ④ Wipe frames with water gently, do not use bleach, acid, or other solvents.
- ⑤ Check all hardware before assembly. Incorrect parts used may lead to damage.

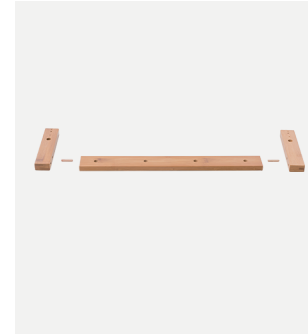


Scan the QR code to view the assembly video.



Finished Product

## ASSEMBLY INSTRUCTIONS



- ① Position Short Frame (c) and Long Frame (b), secure with Tenon (d).

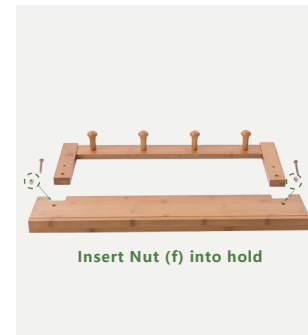


- ② Secure with Pointed Tail Screw (h).

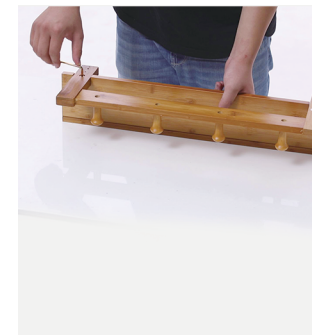


- ③ Position and secure Hook (e) with Pointed Tail Screw (h).

© 2020 - 2021 by Pundarika LLC - MoNiBloom.com



- ④ Position Flat Head Screw (g), Nut (f) and Wall Mount Bracket (a).



- ⑤ As picture shown, secure with Flat Head Screw (g).



- ⑥ Install on wall.

## INSTALL ON WALL



- ① Mark on wall.



- ② Drill a hole on wall, and then insert Plastic Anchor (i).



- ③ Secure with Pointed Tail Screw (h) and hang up the rack.