



NBP6171: 52" POOLS

NBP6157: 48" POOLS

A-FRAME POOL LADDER FOR ABOVE GROUND POOLS

INSTRUCTION MANUAL



NBP6171: 52" Pools



NBP6157: 48" Pools



Questions, problems, missing parts?

Before returning to your retailer, contact Blue Wave Customer Service at
1-800-759-0977, Monday – Friday. 8am – 5pm (CST)

TABLE OF CONTENTS

THANK YOU! 3

SAFETY INFORMATION 3

SAFETY INSTRUCTIONS AND WARNINGS 4

STORAGE AND CARE 4

PARTS LIST AND DIAGRAM..... 5

ASSEMBLY INSTRUCTIONS 6

WARRANTY 7

THANK YOU!

Thank you for purchasing this product. We work around the clock and around the globe to ensure that our products maintain the highest possible quality. However, in the rare case of issues during assembly or use of this product, please contact **Blue Wave Customer Service** at 1-800-759-0977 for immediate assistance before contacting your retailer. Please read the warranty information at the back of these assembly instructions for further details.

SAFETY INFORMATION

Please read this entire manual before attempting to assemble, operate, or install the product.

**NEVER DIVE OR JUMP INTO AN ABOVE GROUND POOL!
SERIOUS AND PERMANENT INJURIES MAY RESULT.**

**NEVER LEAVE CHILDREN UNATTENDED IN OR AROUND THE POOL!
UNATTENDED CHILDREN DROWN IN POOLS EVERY YEAR.**



SAVE THIS INSTRUCTION MANUAL

Use of unauthorized replacement parts voids warranty.

ATTENTION INSTALLER: This manual contains important information about the installation, operation, and safe use of this pump and must be furnished to the end user of this product. Failure to read and follow all instructions could result in serious injury.

IMPORTANT SAFETY INSTRUCTIONS

Please examine equipment before use. If there are any damaged or missing parts at the time of purchase, do not assemble or operate until parts are replaced.

The following instructions contain important safety information, please read these instructions and abide by them when installing and using this ladder.

This includes the following:

WARNING:

- You are the most important safety component of your pool. Ensure people use the ladder safely.
- Do not dive or jump from this ladder. Diving or jumping from ladder may cause permanent injury or death.
- Remove the ladder from pool when it is not in use to prevent unauthorized use and possible drowning.
- Do not swim under, through, or behind this ladder to avoid entrapment or drowning.
- Use only under competent supervision. NEVER LEAVE CHILDREN UNATTENDED.

CAUTION:

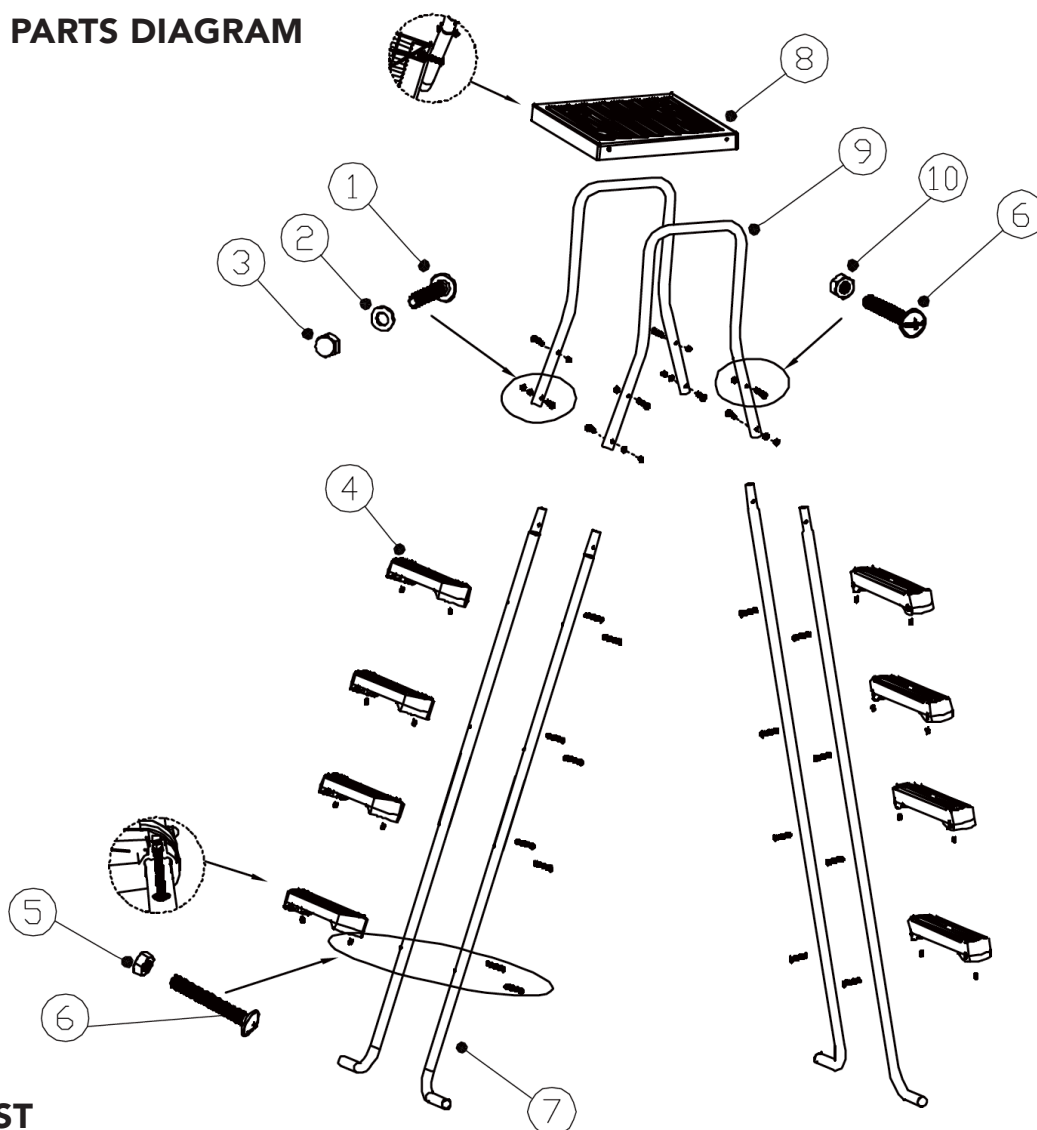
- Place the ladder on a level, fixed surface.
- Ensure the ladder is standing in a stable, secure manner.
- Maximum weight limit is 672-lbs / 305-kg, and corresponds to the ANSI/APSP/ICC-4 standard.
- Before using the ladder, check that the removable steps are firmly and safely attached to the ladder.
- Check all nuts and bolts regularly.
- One person on the ladder/stair at a time.
- This ladder is designed and manufactured for a 48-in/52-in pool wall height and/or deck of a pool only.
- For entry/exit of pool, face the ladder at all times.
- These product warnings cannot contain all safety guidelines associated with the product. They only show the general risks, and do not cover all possible dangers and risks.
- Use artificial lighting during nighttime pool use, to illuminate all safety signs, ladders, steps, deck surfaces, and walks.
- Failure to observe these safety instructions can cause injury.

STORAGE AND CARE

- Check that all parts are dry. Store the ladder in a dry, safe place.
- Please ensure that all parts are stored out of reach of children.

PARTS LIST AND DIAGRAM

LADDER PARTS DIAGRAM



PARTS LIST

#	Part Description	BW No.	MFG No.	NBP6171 (52") QTY.	NBP6157 (48") QTY.
1	M6 X 30 Bolt	NEP20245	LD21001	4	4
2	M6 Washer	NEP20246	LD21002	4	4
3	M6 Nut with Cap	NEP20247	LD21003	4	4
4	Step	NEP20248	LD21004	8	8
5	M6 Lock Nut	NEP20249	LD21005	16	16
6	M6 X 45 Bolt	NEP20250	LD21006	20	20
7	Leg A	NEP20251 A	LD21007 A	4	-
	Leg B	NEP20251 B	LS21007 B	-	4
8	Top Platform	NEP20252	LD21008	1	1
9	Handrail	NEP20253	LD21009	2	2
10	M6 Nut	NEP20254	LD21010	4	4

ASSEMBLY INSTRUCTIONS

ASSEMBLY TIME

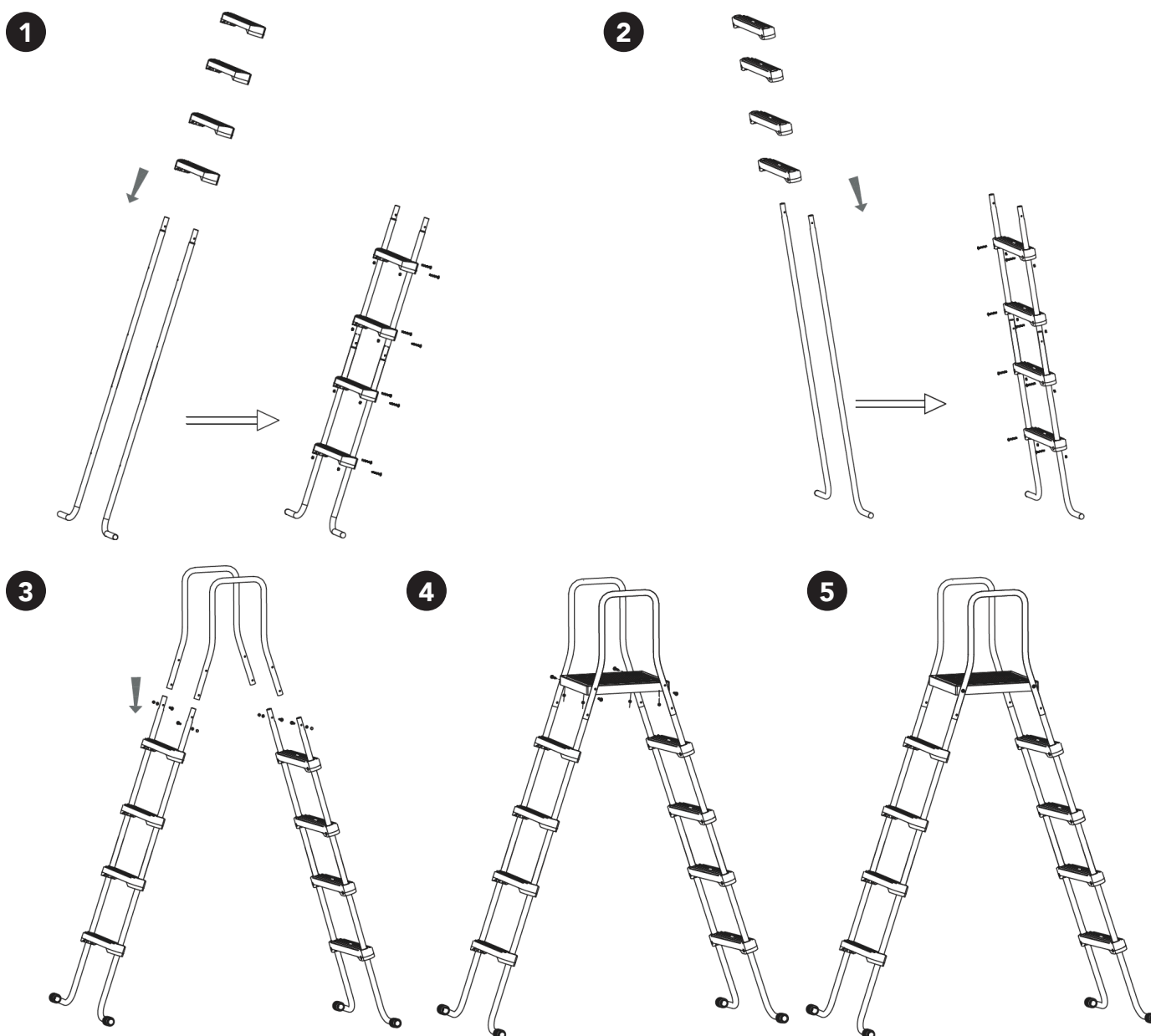
Assembly time for one person is around 45 minutes.

TOOLS REQUIRED

A Phillips screwdriver and pliers are required for assembly.

ASSEMBLY

Carry out the assembly process using illustrations 1-5.



LIMITED 90-DAY WARRANTY

1. GENERAL TERMS:

- 1.1 In accordance with these provisions, the seller warrants that the product is free of defects and in perfect working condition at the time of delivery to the final purchaser (consumer).
- 1.2 The warranty term for the product is 90 days from the time it is delivered to the final purchaser (consumer).
- 1.3 In the event of any defect in the product notified by the purchaser (consumer) to the seller during the warranty term, the seller will repair or replace the product as they determine best.
- 1.4 Replacing or repairing parts or the complete product under this warranty will not extend the warranty term of the original product but will assume any remaining balance of the original warranty term.
- 1.5 In order for this warranty to be valid, the purchaser (consumer) must provide proof of the date of purchase and the date of the product's installation.

2. INDIVIDUAL TERMS:

- 2.1 This warranty covers the products referred to in this manual.
- 2.2 For this warranty to be effective, the purchaser (consumer) must strictly follow the manufacturer's instructions as included in the documentation provided with the product.

3. LIMITATIONS:

- 3.1 This warranty will only be applicable to sales made to the final purchaser (consumer).
- 3.2 The normal wear resulting from using the product is not covered under this warranty. With respect to expendable or consumable parts, components and/or materials, such as hoses, hose clamps, and the black foam screen, no warranty other than an initial defect warranty applies.
- 3.3 The warranty does not cover those cases where the product; (I) has been handled incorrectly; (II) has been repaired, serviced or handled by non- authorized people, or (III) has been repaired or serviced not using original parts. In cases where the defect of the product is a result of incorrect installation or start-up, this warranty is void.
- 3.4 For questions regarding the warranty or to claim service under the warranty, please contact Blue Wave® Products at 1-800-759-0977.

Blue Wave® Products, Inc.
101 N Raddant Road
Batavia, IL 60510