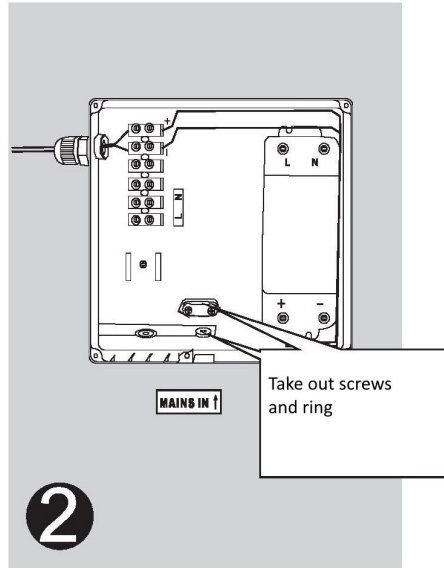
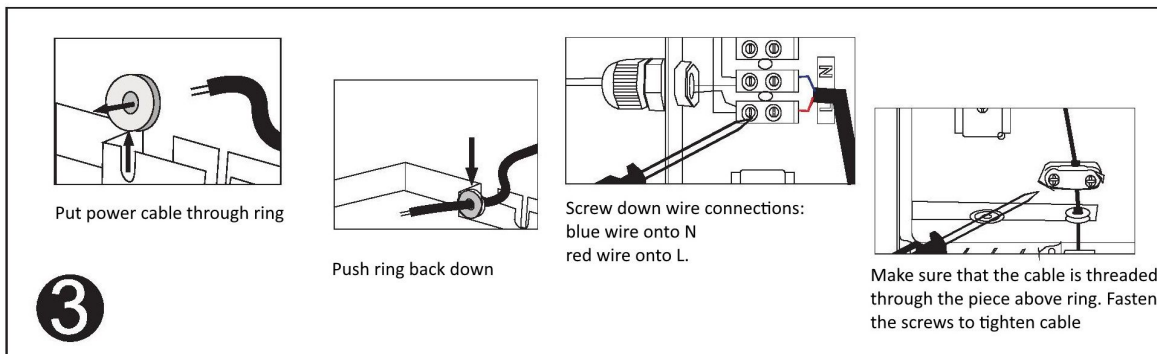


1
Prepare a 110V power source.
Attach 2 screws onto the wall
for mounting.

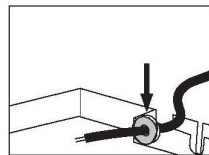


2
Flip mirror over and open wiring box

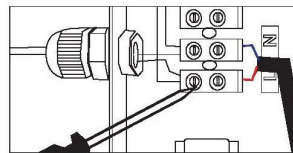


3

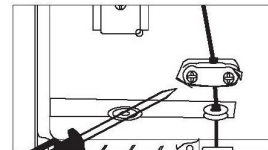
Put power cable through ring



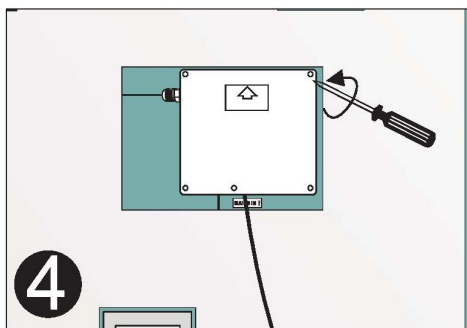
Push ring back down



Screw down wire connections:
blue wire onto N
red wire onto L.

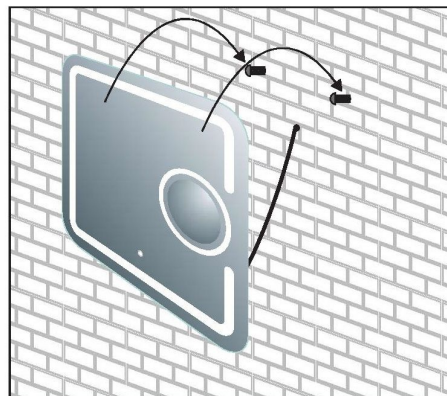


Make sure that the cable is threaded
through the piece above ring. Fasten
the screws to tighten cable



4

Close wiring box and fasten screws



Mount mirror onto screws