

# HALIFAX

ASSEMBLY INSTRUCTIONS D163

# NOVASOLO

## All NovaSolo products are:

Designed in Denmark.

Made in Indonesia.

Manufactured by: PT. Nova Indonesia.

## Imported into Canada and United States by:

Nova Solo Furniture LLC

3651 Lindell Road Suite D319

Las Vegas NV 89103

United States

## Imported into Australia by:

Nova Solo Australia PTY Ltd.

TC's Transport and Logistics

21 Merola Way, Campbellfield, VIC, 3061

Australia

# HALIFAX

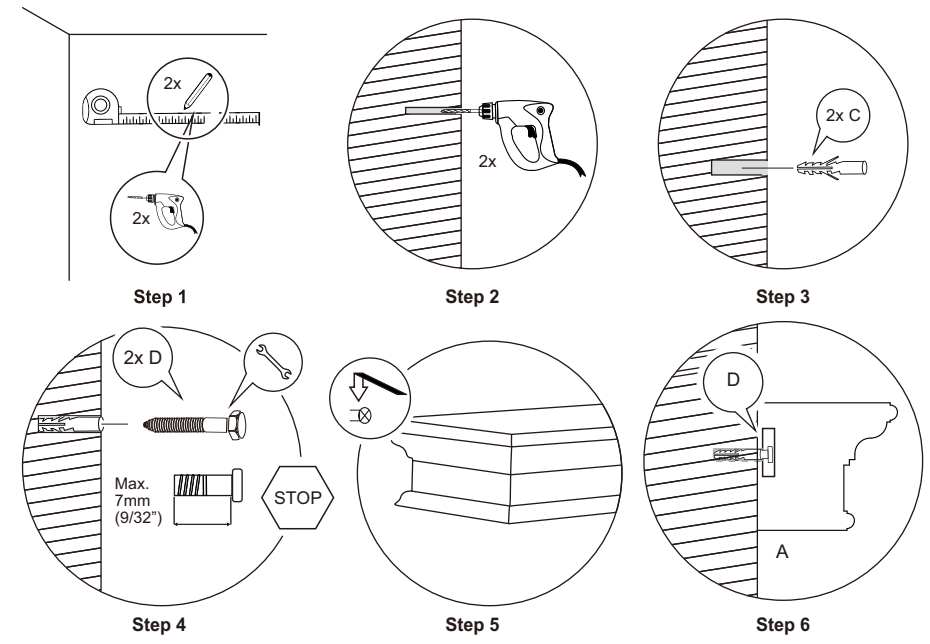
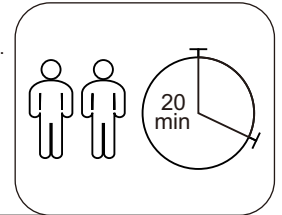
ASSEMBLY INSTRUCTIONS D163

# NOVASOLO



## Prepare for Installation

- Use an 8mm drill bit (not included) for Step 2.
- Use a 16/17mm wrench (not included) for Step 4 to properly tighten Part D.  
Note: the Hex Bolt head diameter is 10mm.
- The hardware included with this item is meant for concrete & stud mounting only. If your wall is made from another material such as drywall or plaster, please consult your local hardware store for assistance in selecting the correct hardware.
- Distance between mounting holes is approximately 20 cm / 7.87 inches. Measure the hole distance on the product to be more precise.



Manufacture Date



Always use the proper tools during assembly and follow the steps in order—DO NOT skip any steps. Carefully check all packing materials for assembly hardware. If any parts are missing, contact the retailer from which you purchased the product to obtain replacements. **DO NOT USE SUBSTITUTE PARTS.** When assembling, tighten screws by hand initially. Once all screws are in place, use the provided tool for final tightening. Periodically check that all hardware (bolts, screws, etc.) is secure. **DO NOT STAND ON THE PRODUCT DURING ASSEMBLY.** If the instructions indicate that assembly requires two or more people, **DO NOT ATTEMPT TO ASSEMBLE IT ALONE**, as this poses a risk of injury.