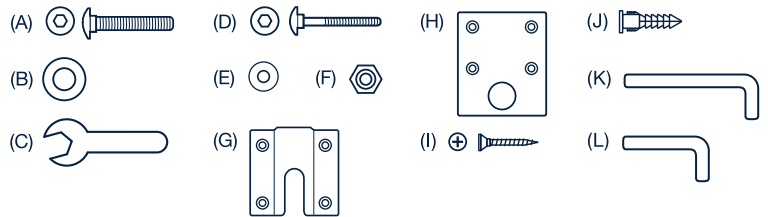


# HEADBOARD ASSEMBLY INSTRUCTIONS

## PARTS LIST:

- |                      |                         |
|----------------------|-------------------------|
| (A) M8 Bolts x4      | (G) Headboard Mounts x2 |
| (B) Big Washers x4   | (H) Wall Mounts x2      |
| (C) Wrench x1        | (I) Screws x16          |
| (D) M6 Bolts x4      | (J) Drywall Anchor x8   |
| (E) Small Washers x4 | (K) Hex Key 65mm        |
| (F) Nuts x4          | (L) Hex Key 70mm        |



## STEP 1

Remove the headboard from the box and lay it face down on the ground. Open the velcro panel on the back and remove both the legs and hardware.

## STEP 2

Using two (A) M8 bolts, two (B) big washers, and the provided holes, secure both legs to the headboard at your desired height with (K) Hex Key 65mm provided (see Figure 1).

## STEP 3

With the front side of the headboard facing the bed frame, attach the headboard to the frame using the (L) Hex Key 70mm, (D) M6 bolts, (E) small washers, and (F) nuts (see Figure 2).

*If your bed frame doesn't fit the headboard, use the provided modification plates to secure the bed frame to the headboard. More instructions are included with the plates. If you choose to mount your headboard to the wall you can remove the legs. If you wish to keep the legs, complete steps 1-3 first.*

## STEP 4 (Wall Mount Option)

Using the mounting blocks inside your headboard, screw the two (G) headboard mounts to the top of your headboard with the provided (I) screws (see Figure 3). Then place the (H) wall mounts at the same height as the (G) headboard mounts.

Failure to follow these warnings and assembly instructions could result in serious injury or death. Read all instructions before assembling the headboard. Keep the assembly instructions for future use. Before each usage or assembly, inspect the headboard for damaged hardware, or missing parts. DO NOT use the headboard if any parts are missing or broken. If replacement parts and instructional literature are needed, contact the manufacturer. DO NOT substitute parts.

Figure 1

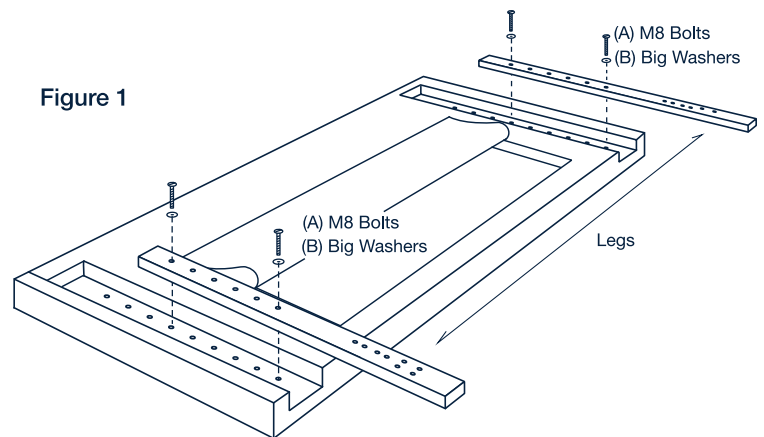


Figure 2

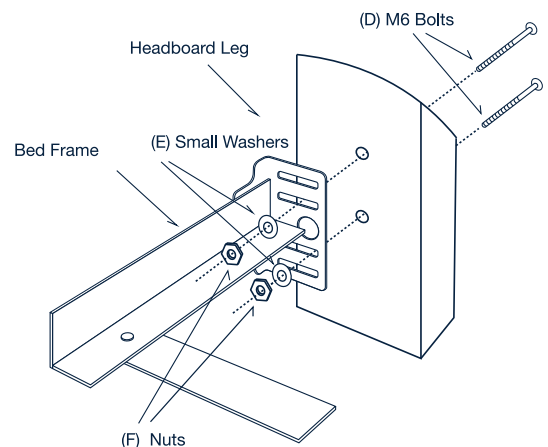
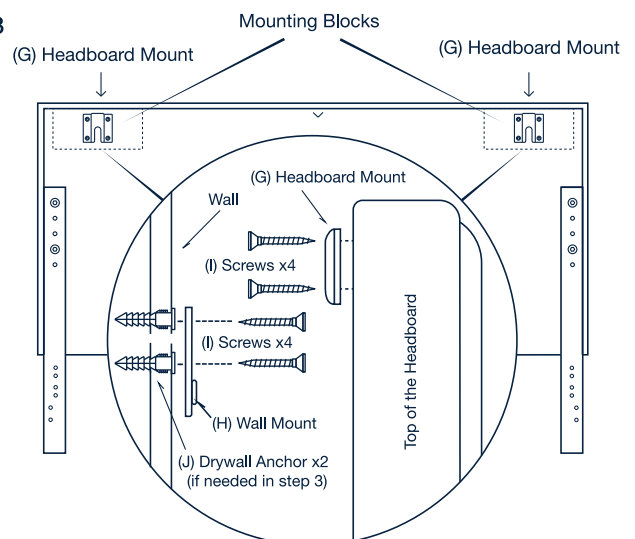


Figure 3



## Headboard Modification Plate

# ASSEMBLY INSTRUCTIONS

### STEP 1

Place assembled bed frame in front of headboard and position modi plate to determine which slots will line up with the headboard brackets and headboard. Use provided lock nuts and bolts to attach modi plates to bed frame headboard brackets as shown in Figure 1.

### STEP 2

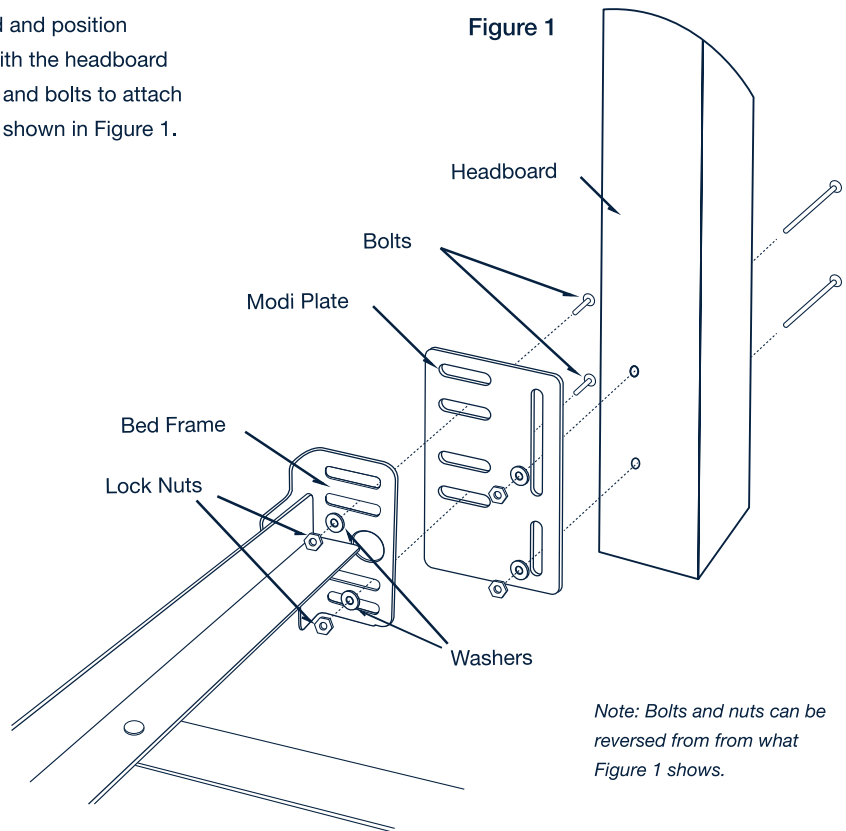
Use provided lock nuts and bolts to attach headboard to modi plates.



## STANDARD MODIFICATION PLATE

#### Parts List:

2 Modi Plates	4 Lock Nuts
4 Short Bolts	4 Washers



Failure to follow these warnings and assembly instructions could result in serious injury or death. Read all instructions before assembly. Keep the assembly instructions for future use. Before each usage or assembly, inspect for damaged hardware, and missing parts. DO NOT use this product if any parts are missing or broken. If replacement parts and instructional literature are needed, contact the manufacturer [\[redacted\]](#). DO NOT substitute parts. Check fasteners and rivets periodically for tightness and positioning.