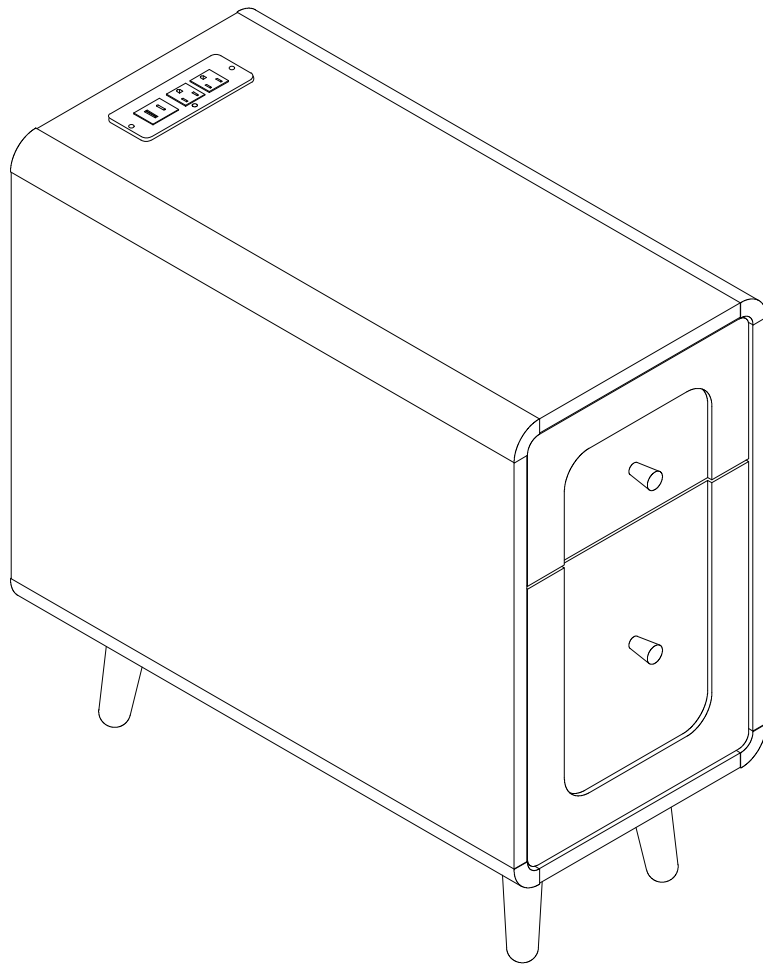


Assembly Instructions



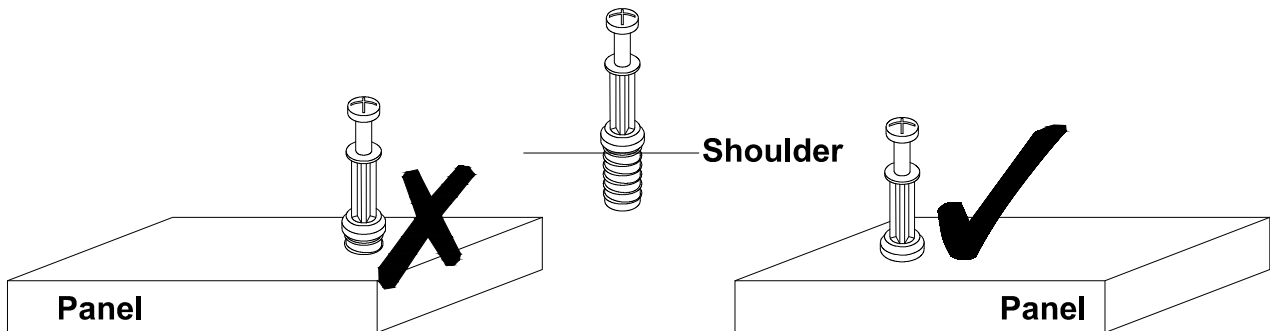
Before Assembly

1. Assembly requires two or more people to complete.
2. Using power tools will make the installation finish faster.

Tips Before Your Start:

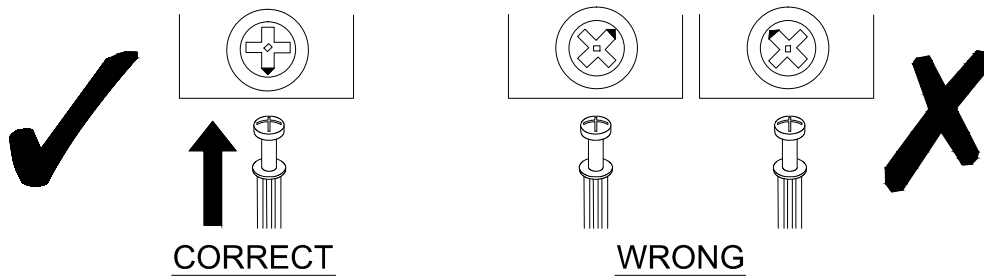
- Remove all wrapping material, including staples & packing straps before you start to assemble.
- DO NOT tighten all screws and bolts until the assembly is completely assembled.
- Keep all hardware parts out of reach of children.

QUICKFIT



Tighten quickfit until shoulder is flush with panel. Do not overtighten or undertighten.

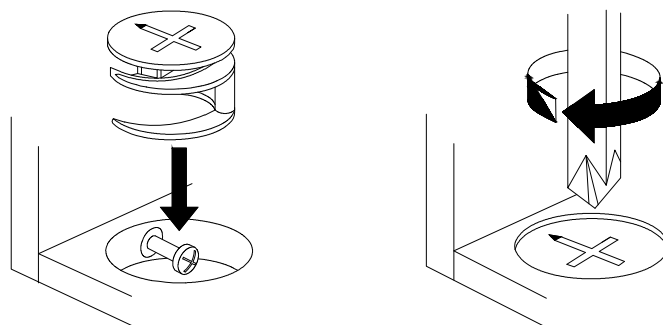
CAM LOCK



When fitting a cam lock, ensure the starting position is correct before inserting the connecting QUI CKFIT

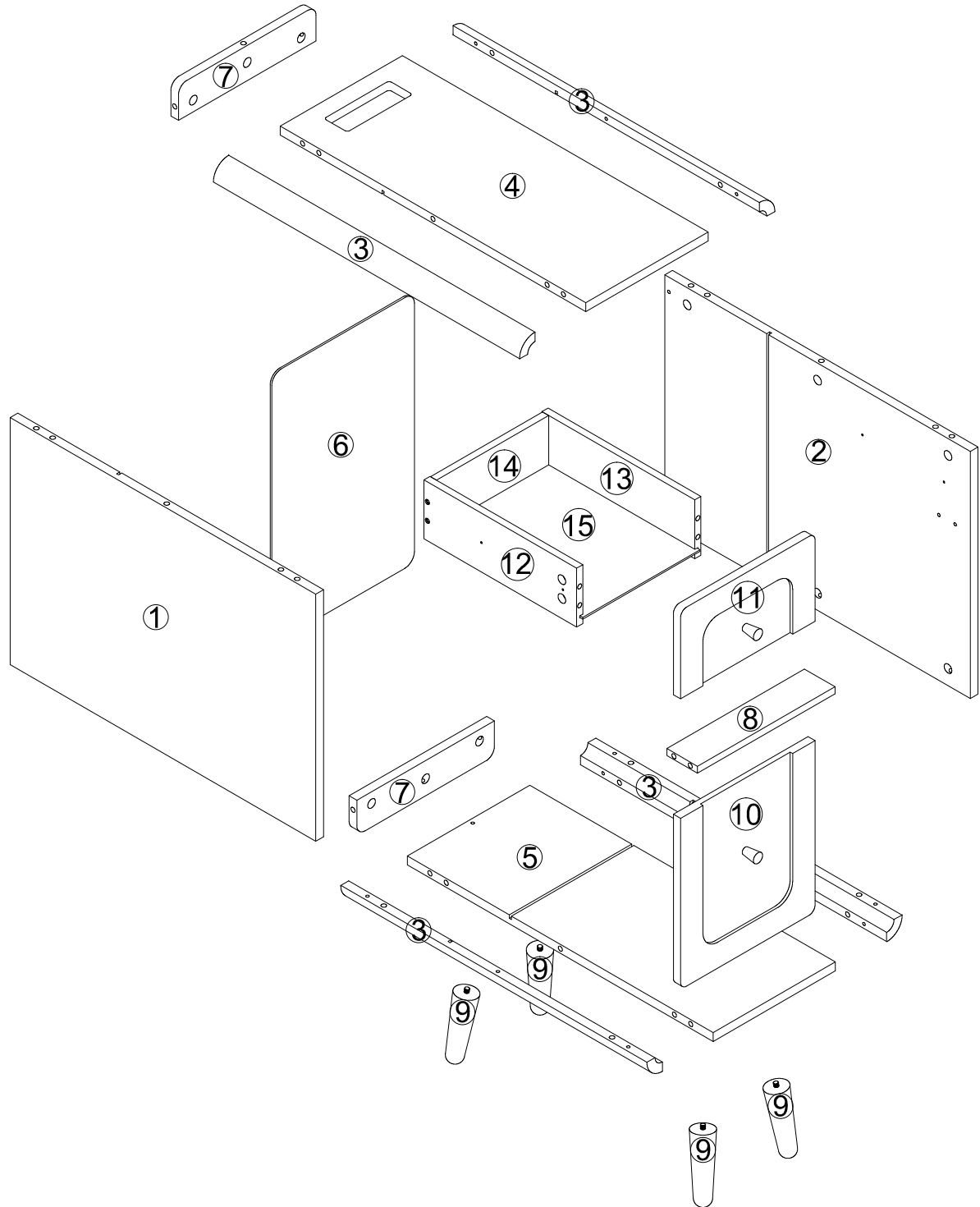
Quickfit head should be in the centre of the cam lock when the two panels are joined.

Cam lock should be inserted before quickfit.

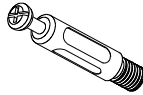
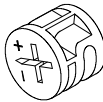

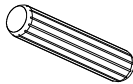
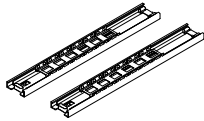
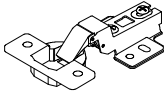
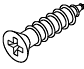
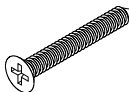
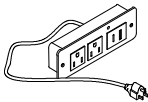
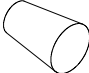
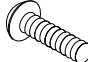
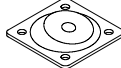
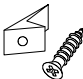
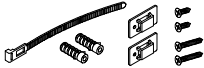


Turn cam lock clockwise to tighten.

Product structure



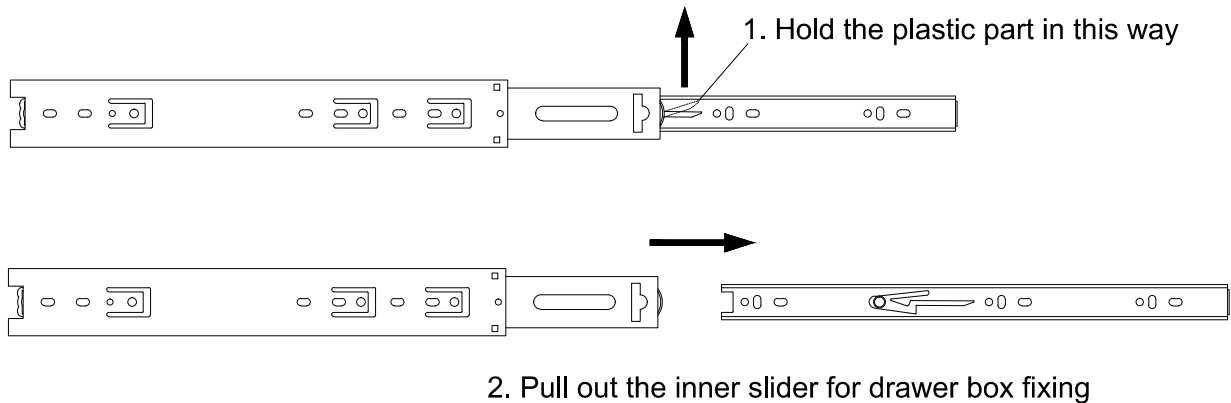
Part List

<p>No. A Quantity:38 Pcs Cam Lock Dowel 8*28mm</p> 	<p>No. B Quantity:38 Pcs Cam φ15</p> 	<p>No. C Quantity:46 Pcs Sticker Ø20</p> 	<p>No. D Quantity:16 Pcs Dowel 8*30mm</p> 
<p>No. E Quantity:1 Sets Drawer Slider 10"</p> 	<p>No. F Quantity:2 Pcs Large curved door hinge</p> 	<p>No. G Quantity:38 Pcs Screw M3.5*12mm</p> 	<p>No. H Quantity:4 Pcs Screw M4*30mm</p> 
<p>No. I Quantity:1 Pc Power strip</p> 	<p>No. J Quantity:2 Pcs Handle</p> 	<p>No. K Quantity:2 Pcs Screw M4*14mm</p> 	<p>No. L Quantity:4 Pcs</p> 
<p>No. M Quantity:4 Sets Plastic Wedge</p> 	<p>No. N Quantity:1 Sets Anti-falling Parts</p> 		

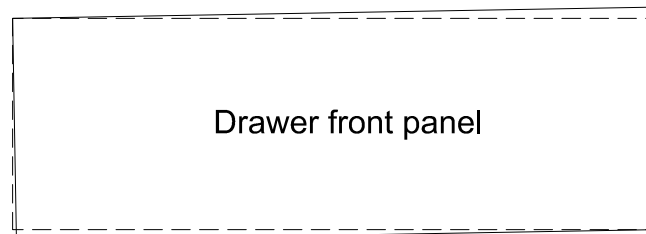
Preparatory steps for installing drawer slides;

please first locate and disassemble the drawer slide 'E' component for subsequent installation, Please follow the instructions below for disassembly.

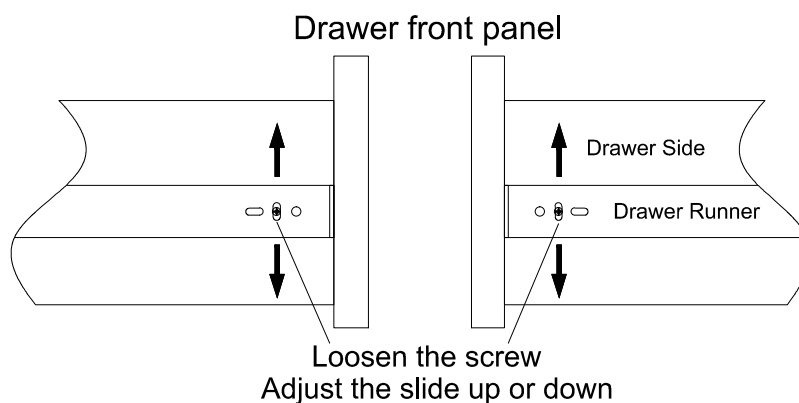
How to separate the drawer slider:



Drawer Front Alignment

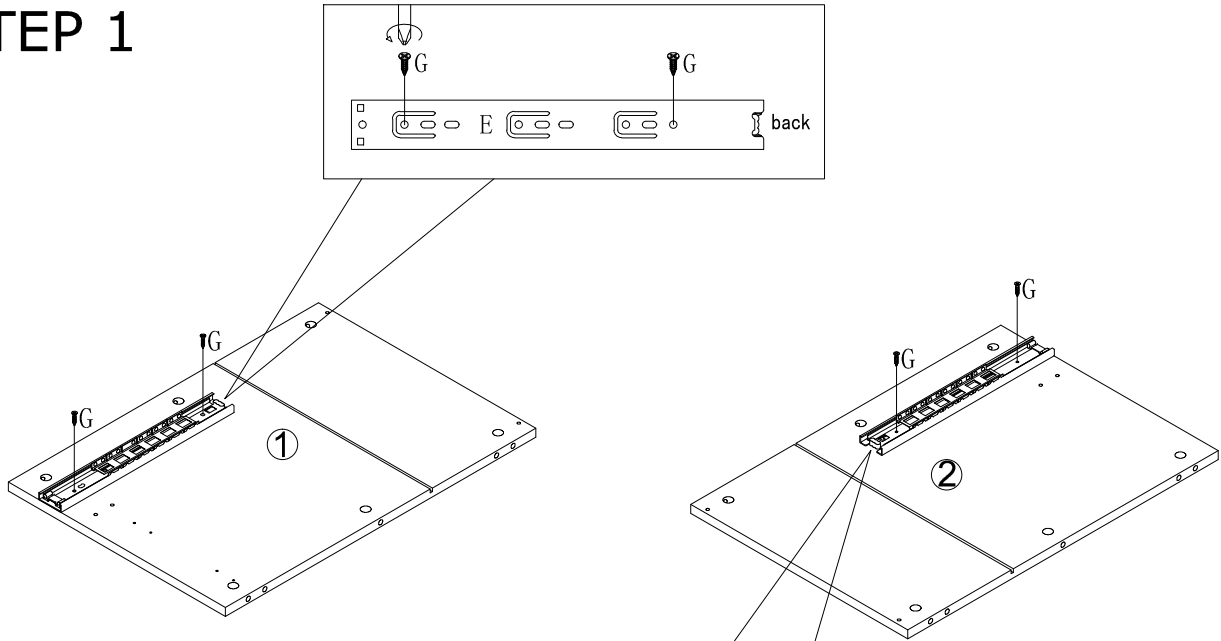


If the drawer front panel is NOT level after being assembled, then...

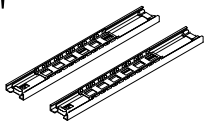


Loosen the screws on the left and right hand side, then adjust the drawer slide up or down, until the drawer fronts are even/level, then tighten the screws.

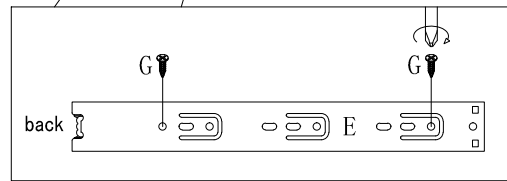
STEP 1



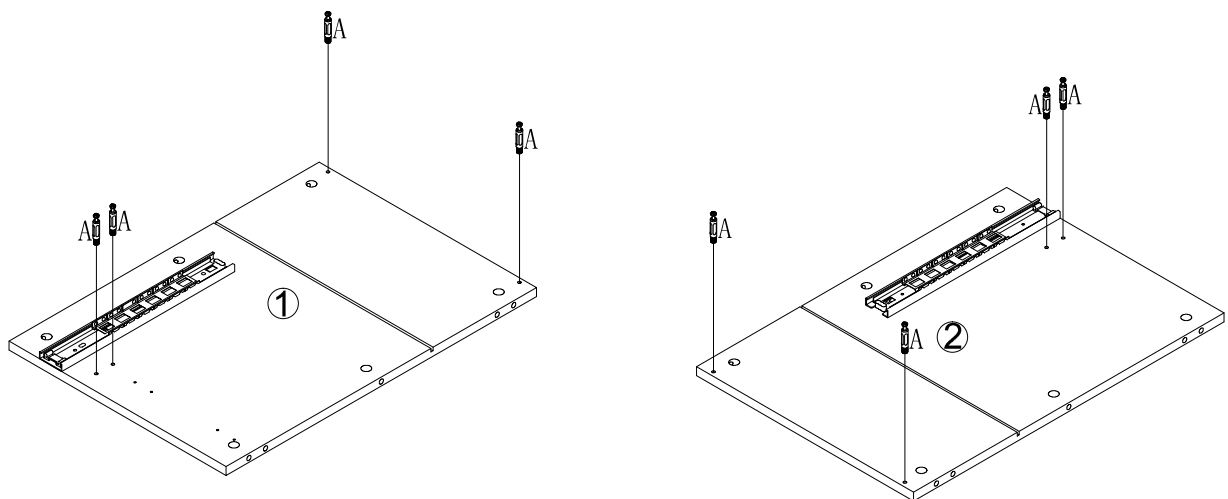
No. E
Quantity: 1 Sets
10"



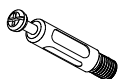
No. G
Quantity: 4 Pcs
M3.5*12mm



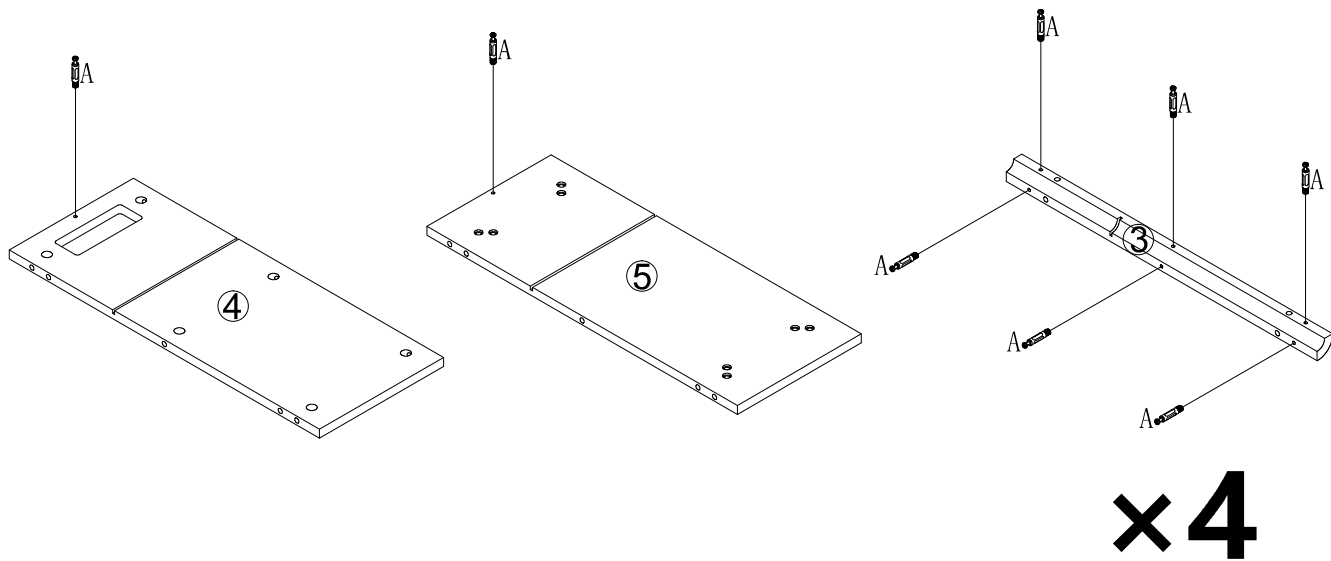
STEP 2



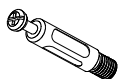
No. A
Quantity: 8 Pcs
8*28 mm



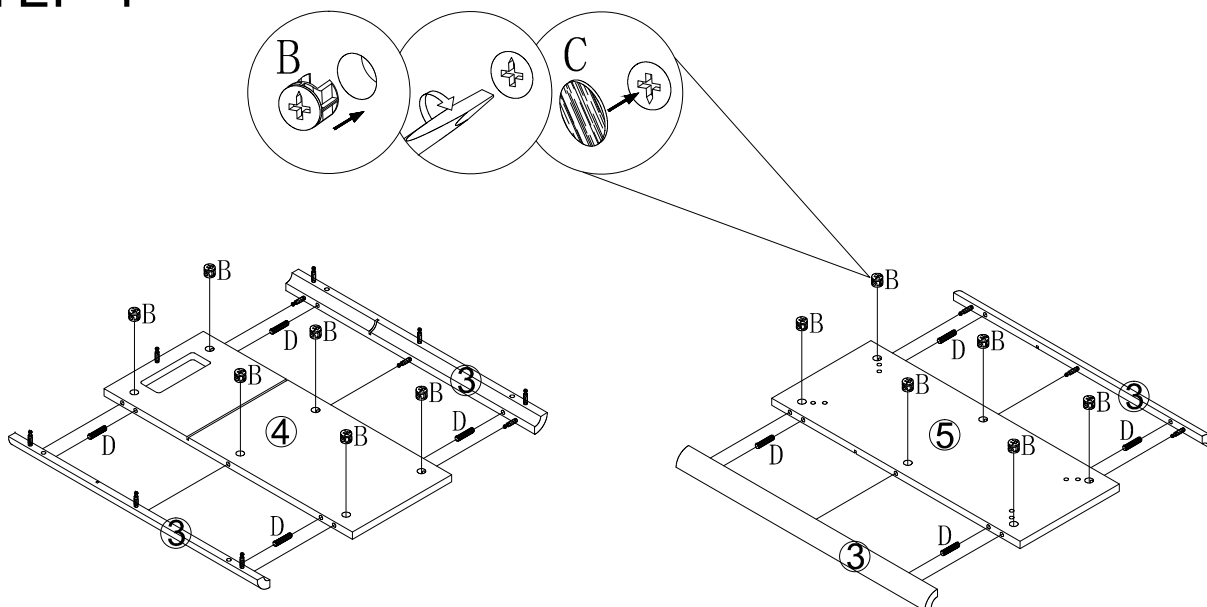
STEP 3



No. A
Quantity: 26 Pcs
8*28 mm



STEP 4



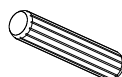
No. B
Quantity: 12 Pcs
Ø15



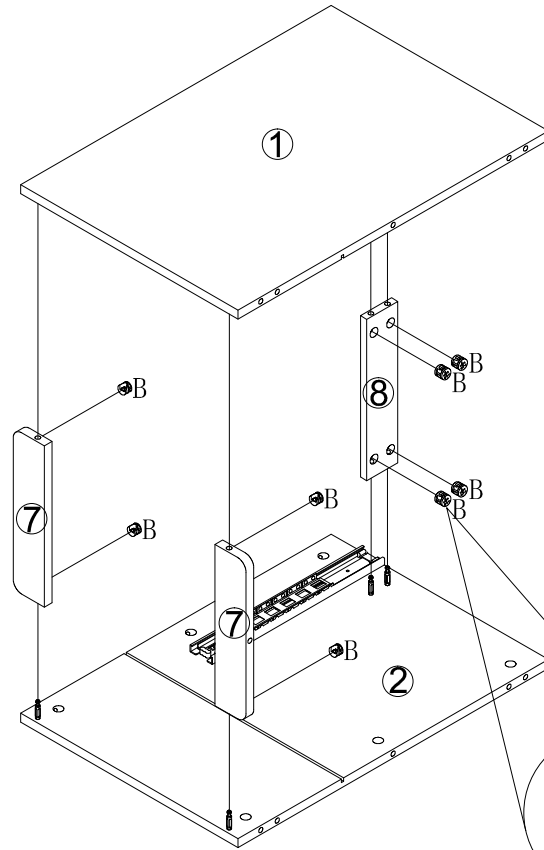
No. C
Quantity: 12 Pcs
Ø20



No. D
Quantity: 8 Pcs
8*30mm



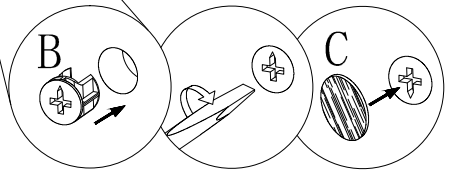
STEP 5



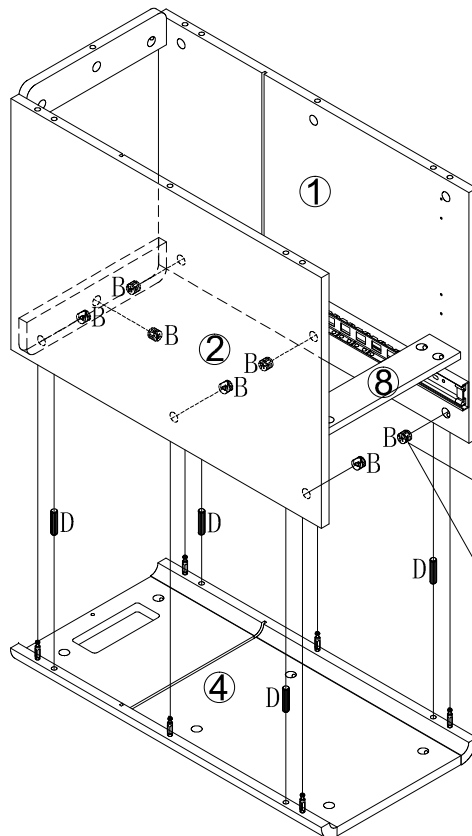
No. B
Quantity: 8 Pcs
Ø15



No. C
Quantity: 8 Pcs
Ø20



STEP 6



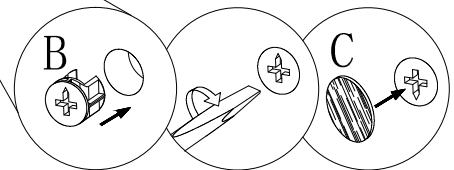
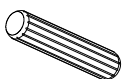
No. B
Quantity: 7 Pcs
Ø15



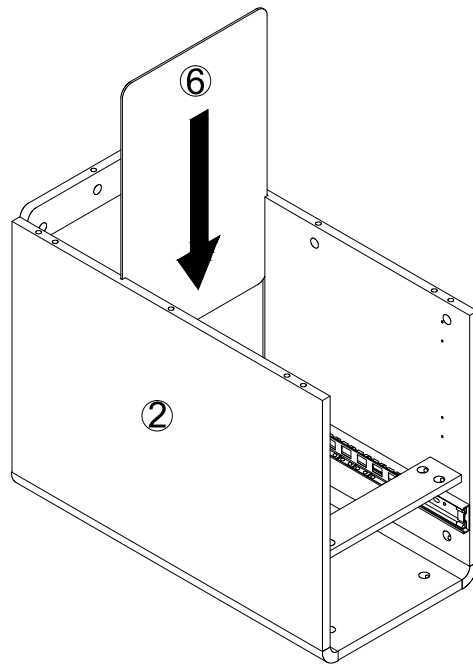
No. C
Quantity: 7 Pcs
Ø20



No. D
Quantity: 4 Pcs
8*30mm



STEP 7



STEP 8

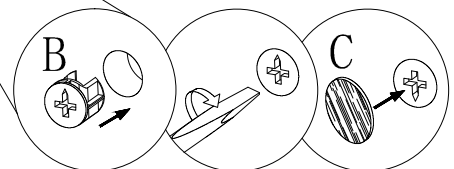
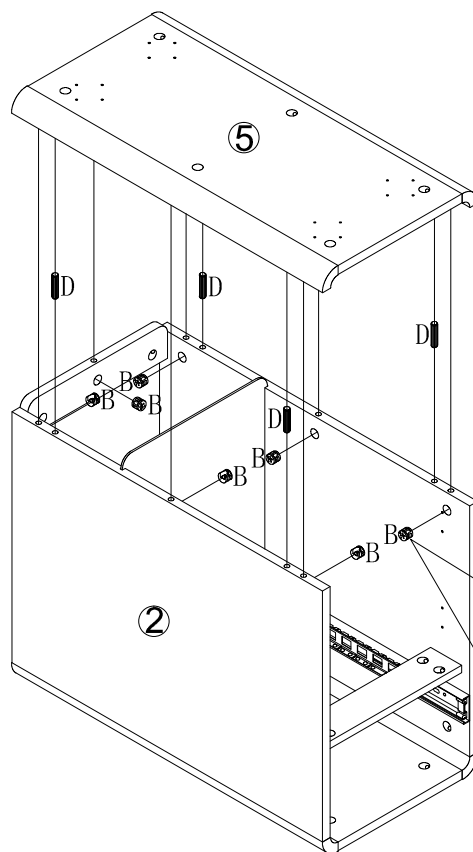
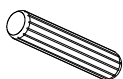
No. B
Quantity: 7 Pcs
Ø15



No. C
Quantity: 7 Pcs
Ø20



No. D
Quantity: 4 Pcs
8*30mm



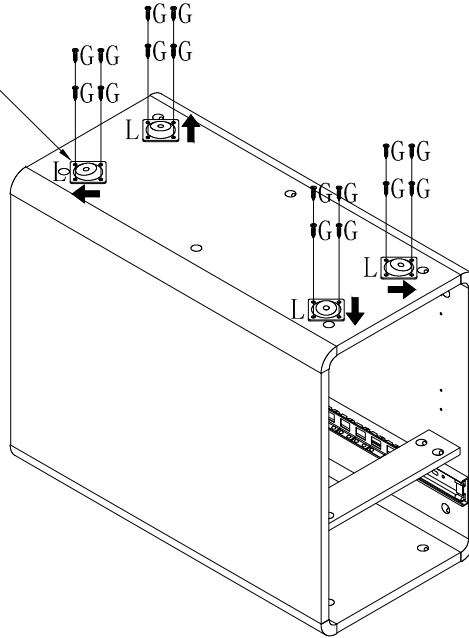
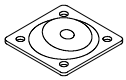
STEP 9

When installing hardware labeled 'L', be sure to pay attention to the orientation; the side with the lower angled surface should face outward.

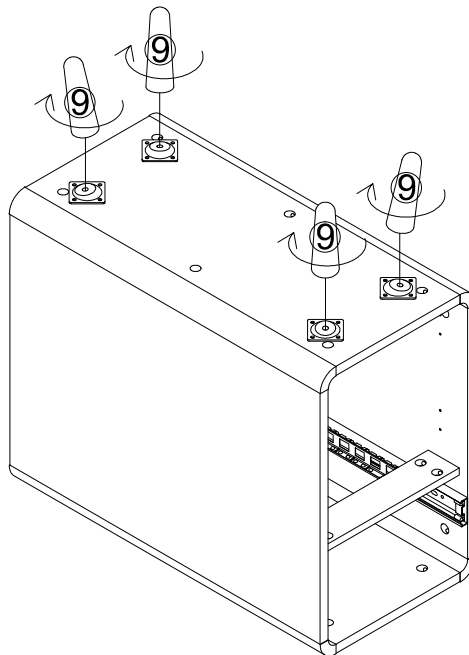
No. G
Quantity: 16 Pcs
M3.5*12mm



No. L
Quantity: 4 Pcs

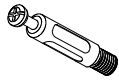


STEP 10



STEP 11

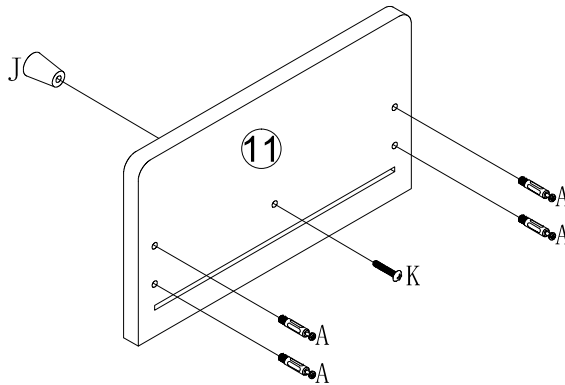
No. A
Quantity: 4 Pcs
8*28 mm



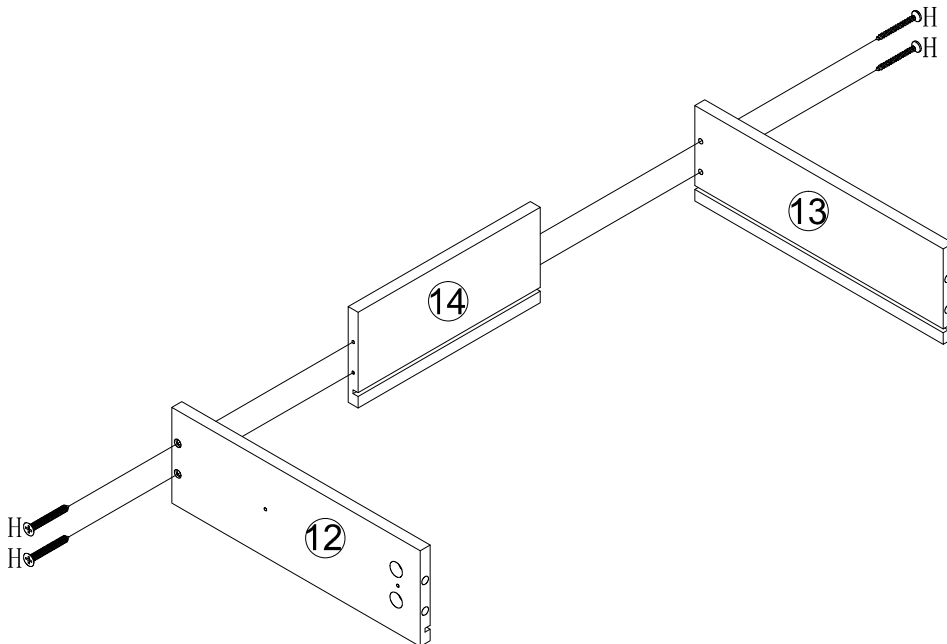
No. J
Quantity: 1 Pc



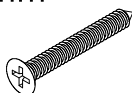
No. K
Quantity: 1 Pc
M4*14mm



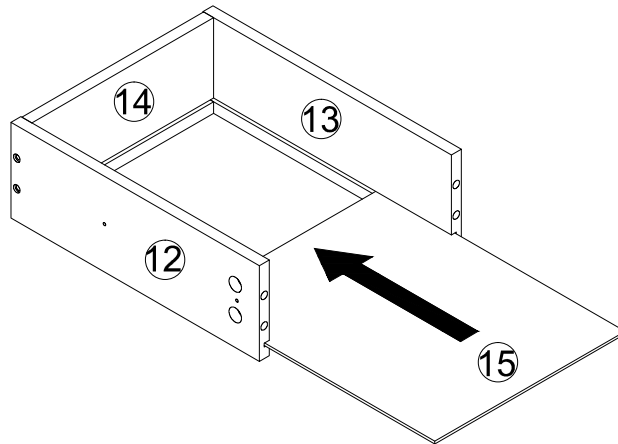
STEP 12



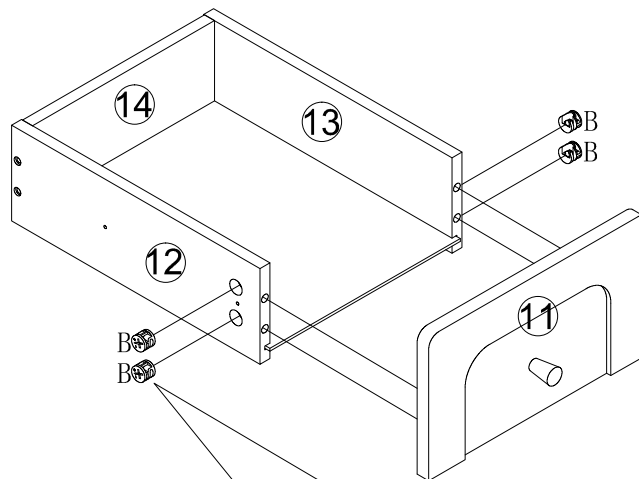
No. H
Quantity: 4 Pcs
M4*30mm



STEP 13



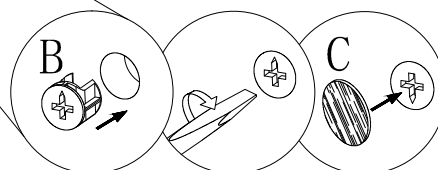
STEP 14



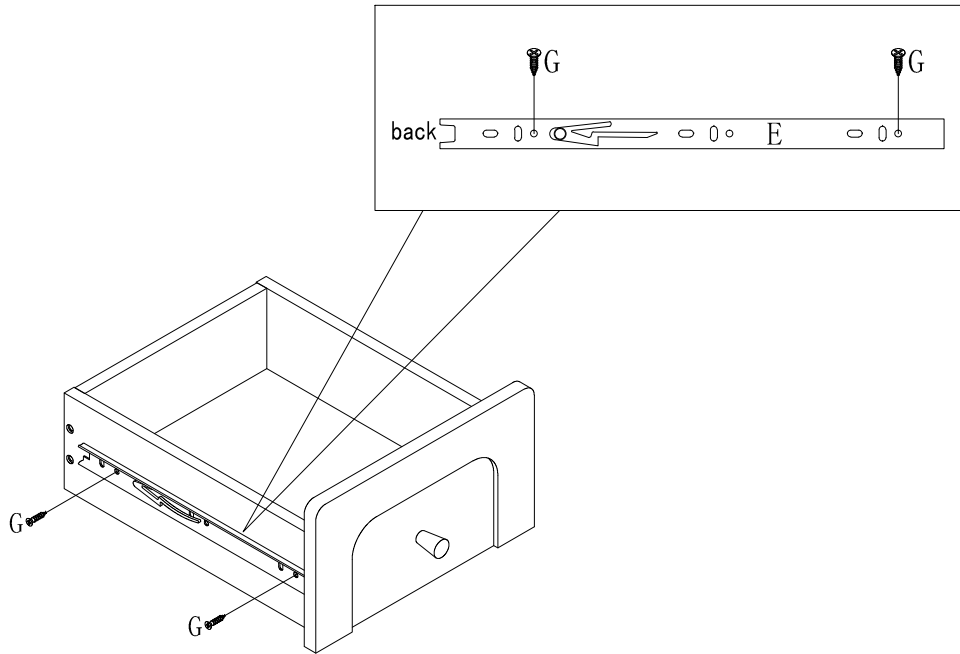
No. B
Quantity: 4 Pcs
Ø15



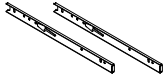
No. C
Quantity: 4 Pcs
Ø20



STEP 15



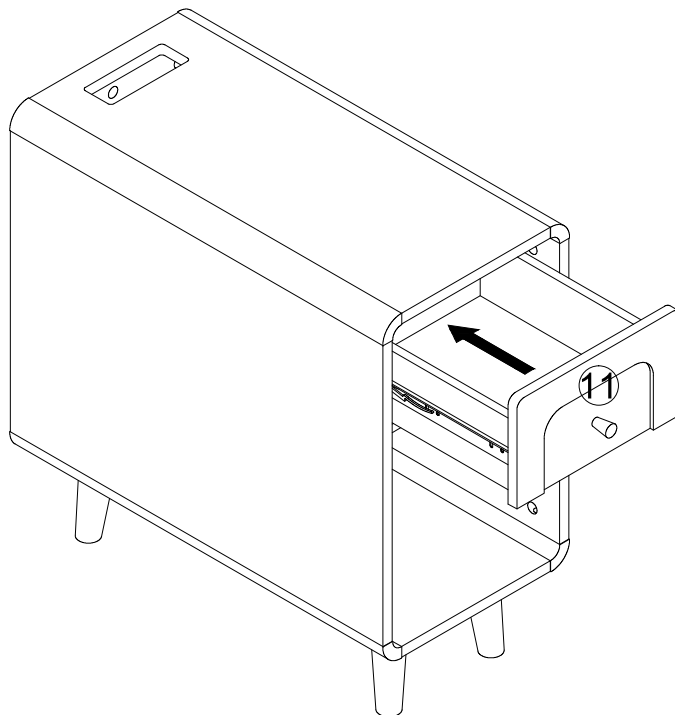
No. E
Quantity: 1 Sets
10"



No. G
Quantity: 4 Pcs
M3.5*12mm

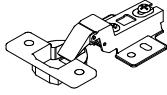


STEP 16



STEP 17

No. F
Quantity: 2 Pcs



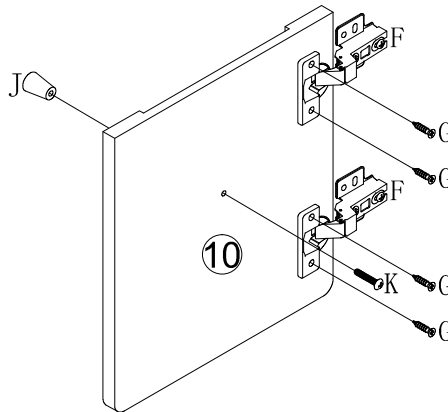
No. G
Quantity: 4 Pcs
M3.5*12mm



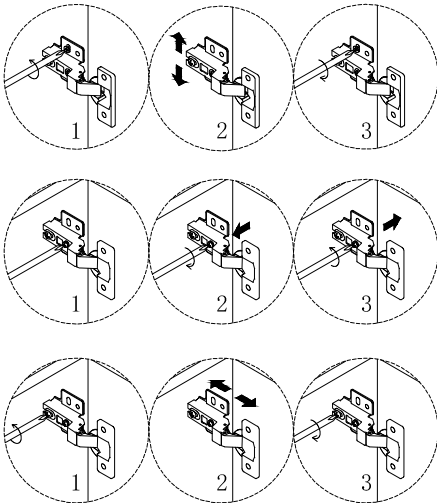
No. J
Quantity: 1 Pc



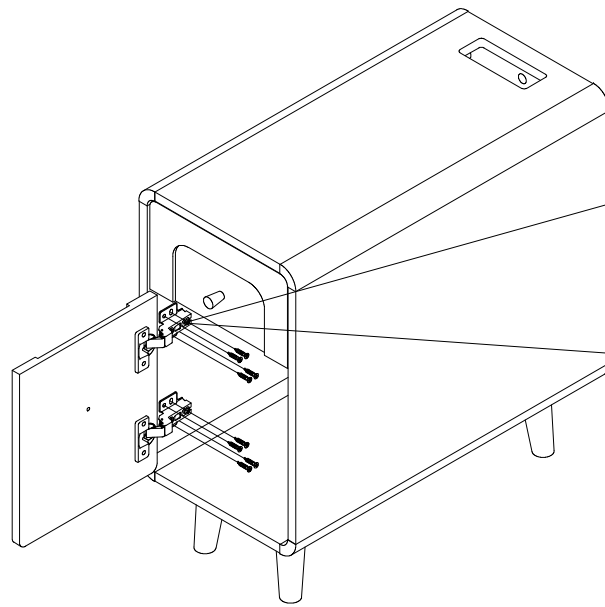
No. K
Quantity: 1 Pc
M4*14mm



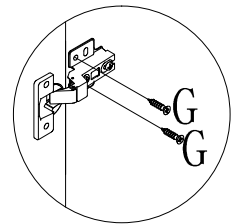
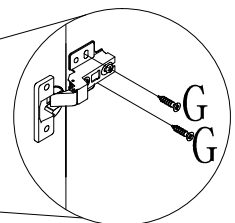
STEP 18



No. G
Quantity: 8 Pcs
M3.5*12mm

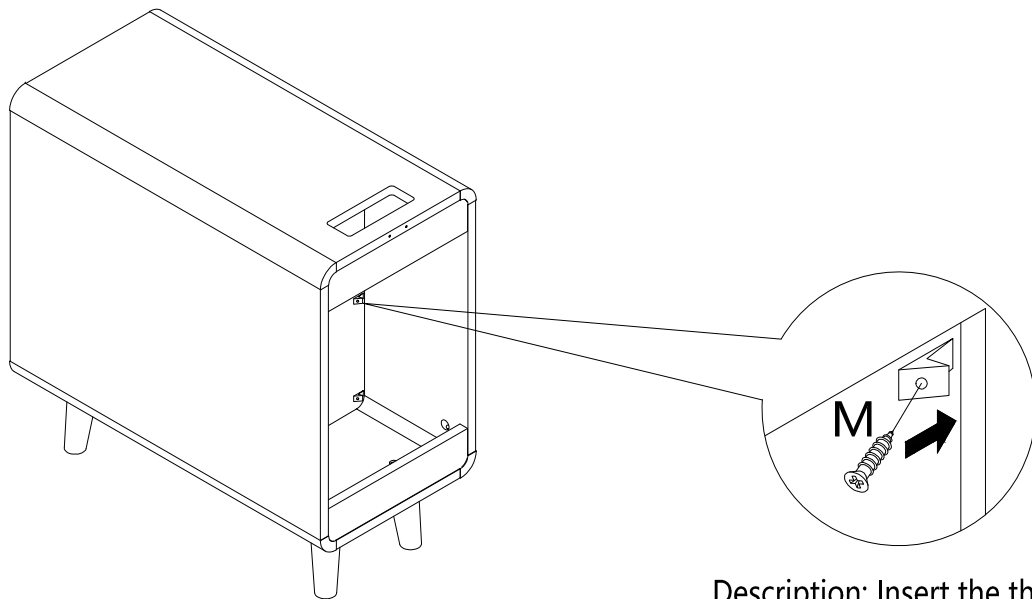


First align the pilot holes and tighten the two screws inside.



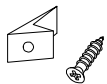
After adjusting the gap of the cabinet door evenly, then fix the two screws on the front side.

STEP 19



Description: Insert the thinner end of the reinforcement into the gap in this back panel, then tighten the screws. This will make the cabinet more stable.

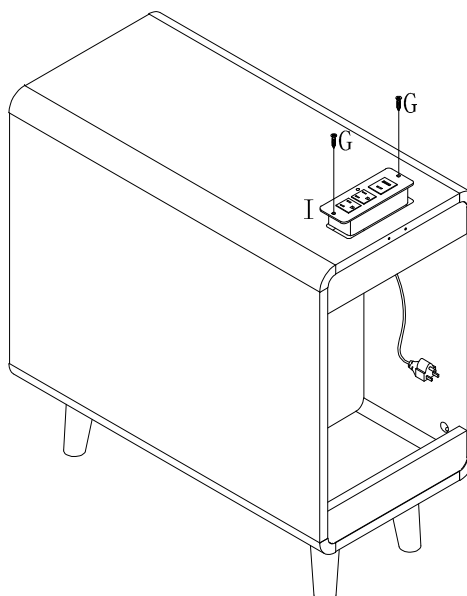
No. M
Quantity: 4 Sets



STEP 20



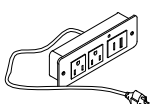
After placing the power strip into the groove, you can directly tighten the screws.



No. G
Quantity: 2 Pcs
M3.5*12mm



No. I
Quantity: 1 Pc



STEP 21

