

10 : 00

estimated
installation time



1 or more

people required

Ok, let's
get started!



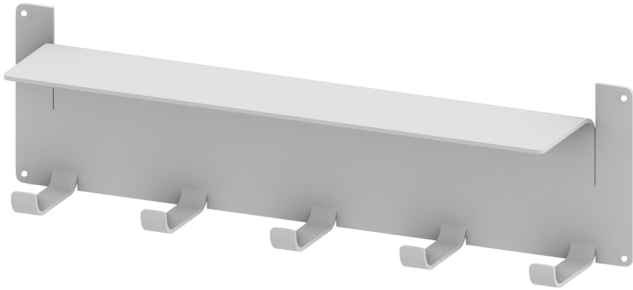
- Put on mood music!
- To prevent damage to product, use the clean side of package carton or rug as working surface.
- In the event of missing or damaged parts, delivery problems etc., please reach out to our team. We will be happy to fix the problem!

care guide

- Clean regularly with a soft and dry cloth.
- To protect finish, avoid use of abrasive cleaners.
- Wipe up spills immediately. Please!

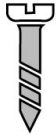


product parts



(A)
Shelf
x1

what's included



(B) - Screw
x4



(C) - Wall Plug
x4

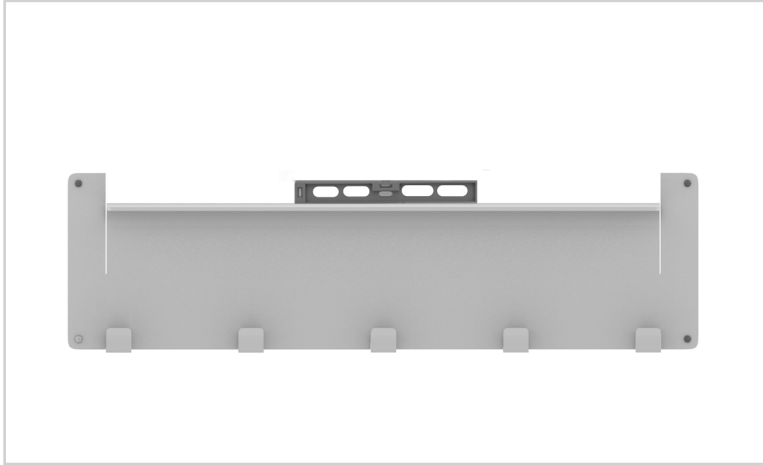
installation instructions

Take a deep breath going in.
This is easy even if you are not
used to tools. Just follow these
steps to the T, and the
outcome will be
worth it!



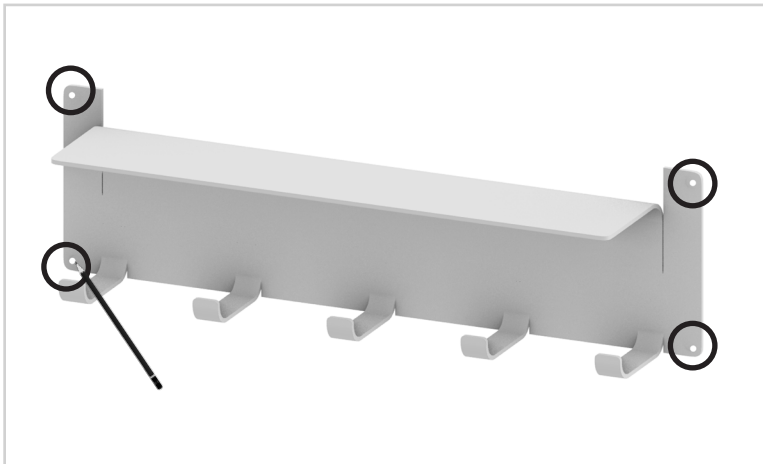
step 1:

Begin by placing shelf (A) on the wall and put a spirit level on it to check the alignment. Adjust if needed.



step 2:

Once the shelf is in a straight alignment, use a pencil to mark three points through the holes given on the shelf. Take this image as a reference.



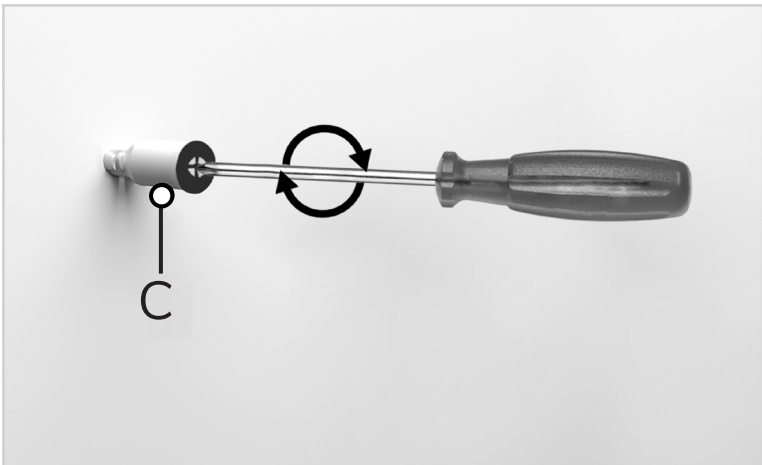
step 3:

Now, drill holes at the points you just marked. Be careful, safety first!



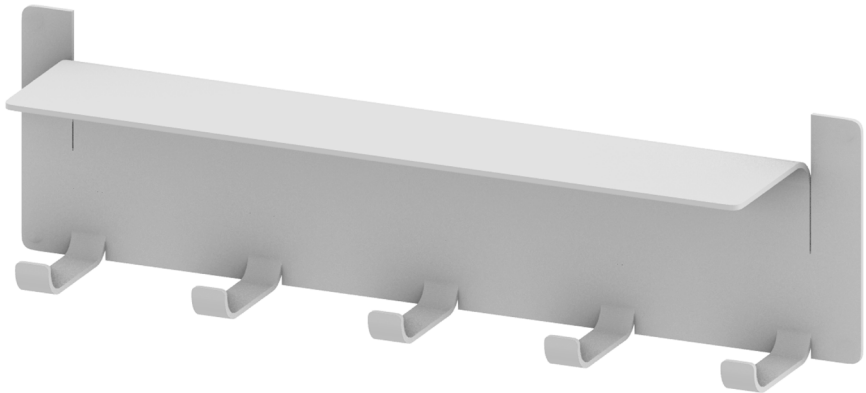
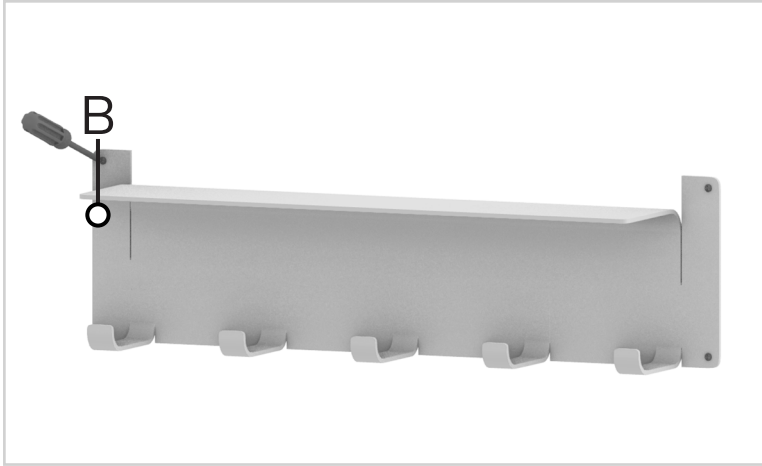
step 4:

Insert wall plugs (C) using a screwdriver.



step 5:

Then, place the shelf over the wall plugs and insert screws (B) into the wall plugs using a screwdriver.



Voila! Your shelf is now installed and secure!

you've
got
a home
with us

