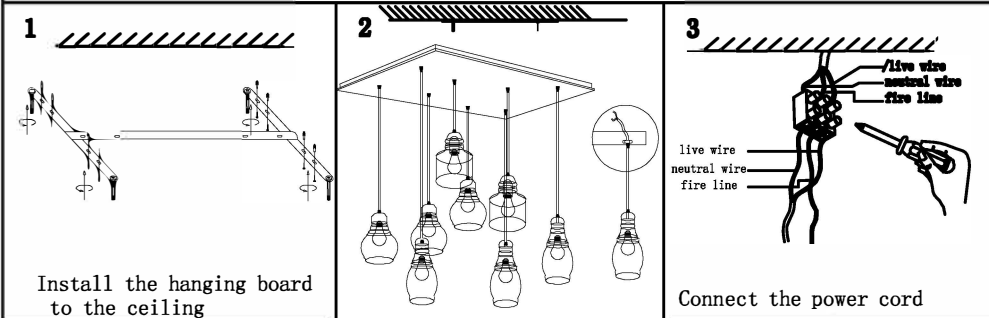


Product installation diagram



installation steps:

1: Please open the package to see if there are incomplete parts, according to the drawings to check whether the accessories are complete;

2: According to the lamp body supporting light source (light bulb or lamp cup) installed;

3: Put crystal jewelry or other accessories in order on the drawing.

4: Use a clean cotton cloth to polish the crystal or other parts;

Precautions:

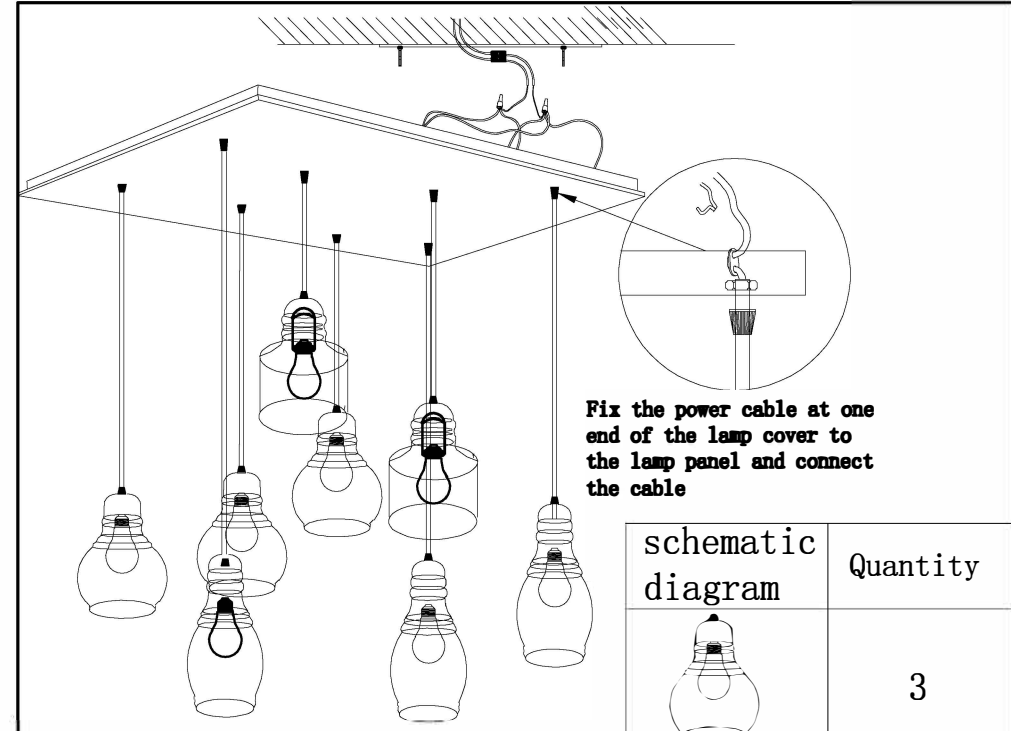
1: Wear gloves when installing;

2: Do not install on a table or floor where gray water is not yet dry or wet.

3: Please cut off the power supply during installation to prevent electric shock.

4: Please cut off the power supply when cleaning or overhauling, please clean with non-corrosive cleaning agent when cleaning;

5: When replacing the lamp, please turn off the power and allow the lamp to cool before proceeding to avoid burns.



schematic diagram	Quantity
	8
	6/6
	1/4
	1/1

schematic diagram	Quantity
	3
	3
	2
	1