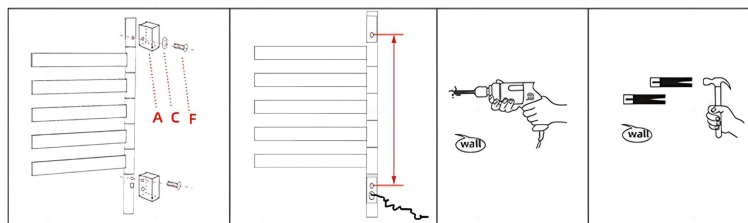
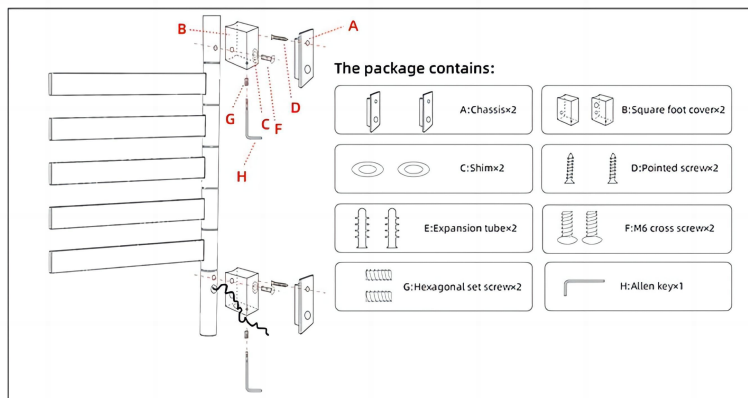
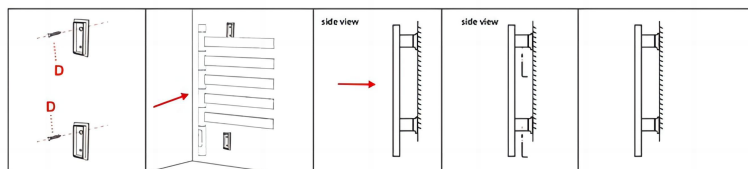


Smart Towel Warmer Rack Installation and Use Instructions

G68 surface installation method



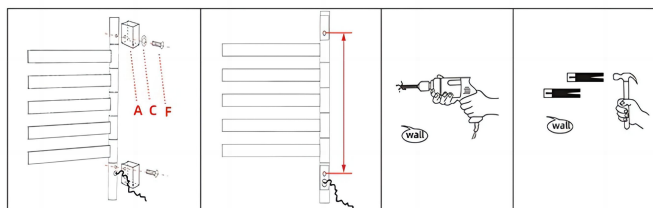
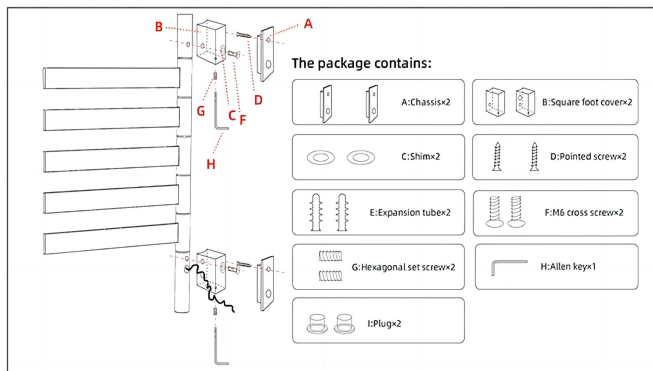
1. Thread the M6 cross screw [F] through the Shim [C] to fix the Square foot cover [A] on the towel rack;
2. Measure the vertical distance of the screw hole on the towel rack as shown in the figure and mark it on the wall;
3. Use an impact drill to drill 8mm screw holes at the marked positions and use a hammer to drive the expansion tube [E] into the wall;



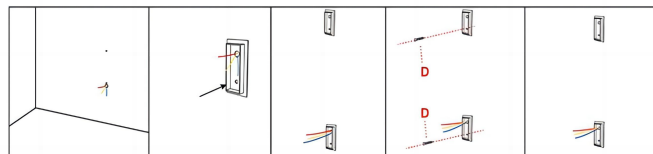
4. Use a pointed screw [D] to pass through the small hole on the base, as shown in the figure, to fix the Chassis [A] on the wall;
5. As shown in the side view, fasten the towel rack to the wall and the installed chassis [A]. Use a Hexagonal set screw [G] to secure the towel rack body to the chassis [A]. Adjust the distance between the towel rack and the wall, and then use an Allen key [H] to tighten the Chassis [A]. Do not install the product upside down;
6. Finally, connect the power supply and complete the installation.

INSTALLATION MODE

Smart Towel Warmer Rack Installation and Use Instructions G68 concealed installation method



1. Thread the M6 cross screw [F] through the Shim [C] to fix the Square foot cover [A] on the towel rack;
2. Measure the vertical distance of the screw hole on the towel rack as shown in the figure and mark it on the wall;
3. Use an impact drill to drill 8mm screw holes at the marked positions and use a hammer to drive the expansion tube [E] into the wall;



4. Align the small hole of one chassis [A] with the expansion pipe sleeve above the wall and fix it with a pointed screw [D]. Thread all the reserved lines through the large hole on the other base, and use a pointed screw [D] to pass through the small hole on the base. Fix the chassis [A] on the wall as shown in the figure;