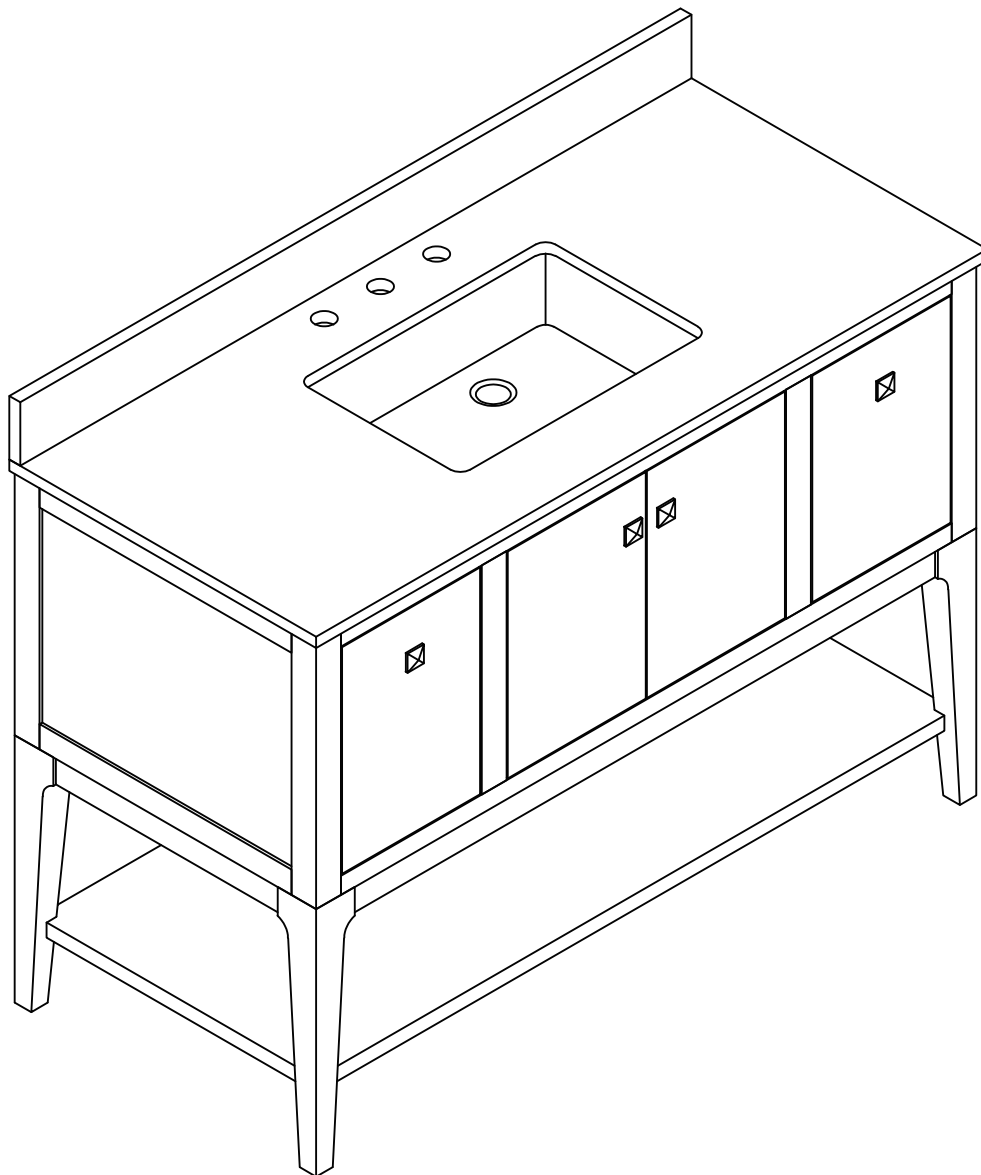


# INSTALLATION INSTRUCTIONS

---

## Bathroom Vanity



Drawings may not accurately depict product contours.



## Prior to Installation:

- **Ensure all necessary accessories are included. If any parts are missing, contact us immediately.**
- **Due to the size and weight of the cabinet, we recommend that two adults handle it on a carpeted or padded area in the intended room.**
- **Only use the tools provided or recommended in these instructions.**

### **General Recommendations:**

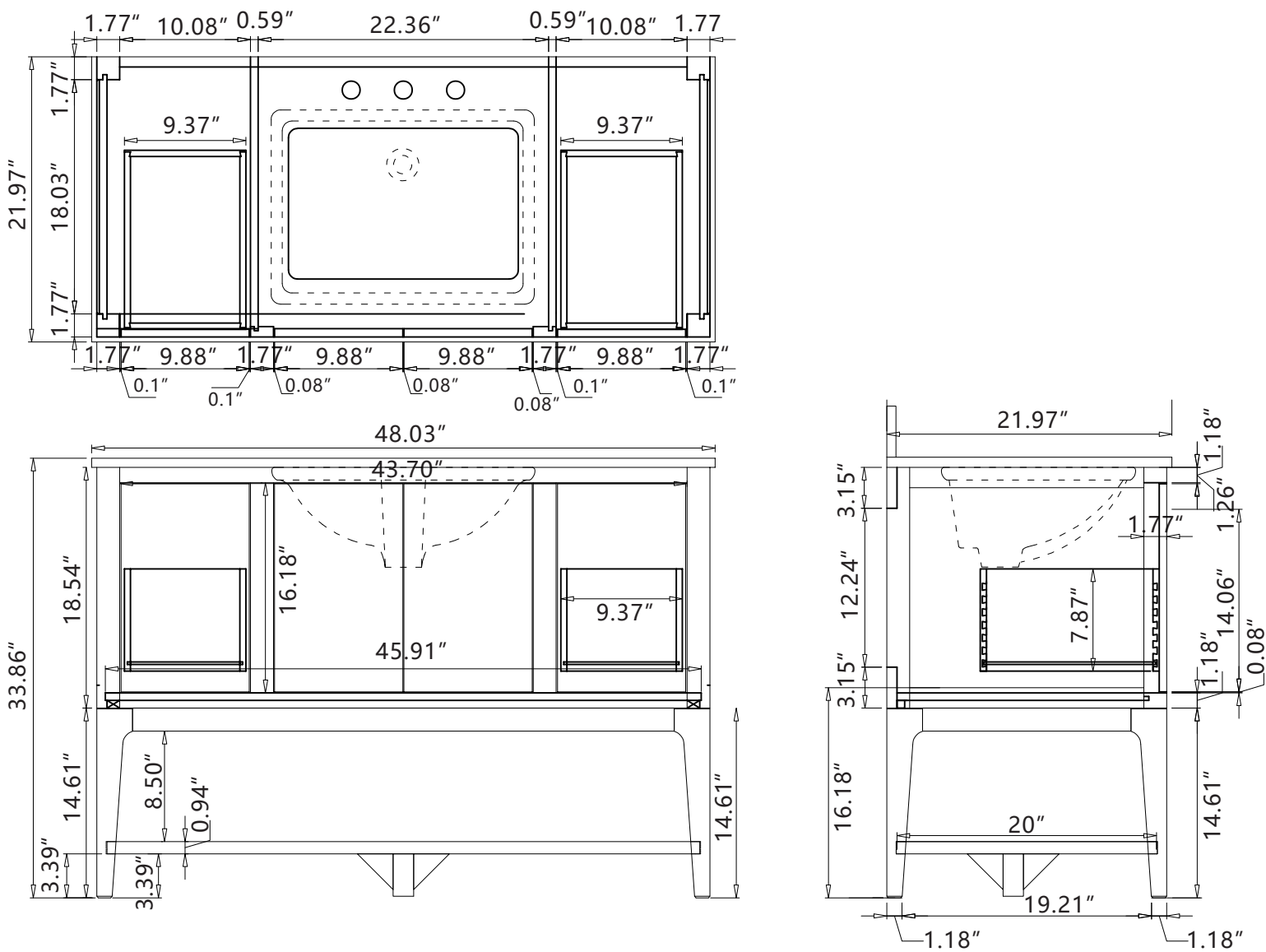
Spend a few moments familiarizing yourself with this manual before proceeding with the instructions. Always use the appropriate tools and wear necessary safety gear to protect yourself.

# INSTALLATION INSTRUCTIONS

## PACKAGE CONTENTS

- Ceramic Basin/Countertop
- Vanity Base/Cabinet

## DIMENSIONS

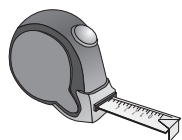


Drawings may not accurately depict product contours.

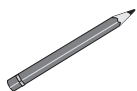
# INSTALLATION INSTRUCTIONS

## INSTRUCTIONS

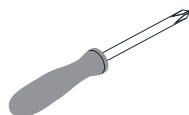
### ● Recommended Tools



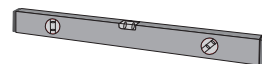
Tape measure



Pencil

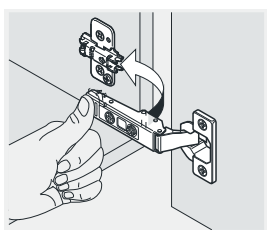


Screwdriver

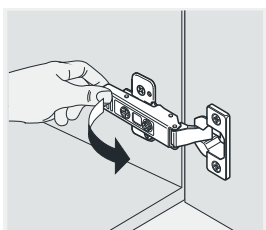


Level

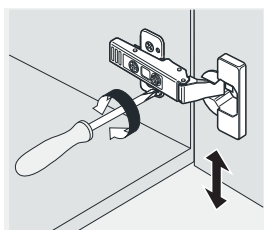
### ● Install, Remove, Or Adjust the Top Fast-Loading Hinge



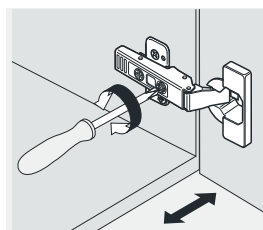
Install



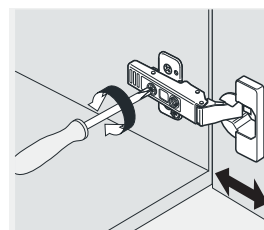
Remove



Adjust the height

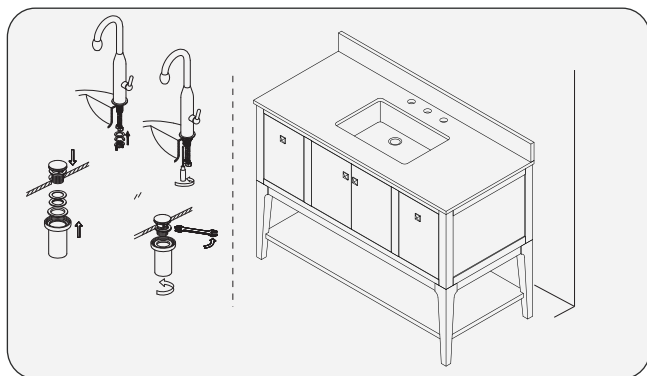


Adjust the lateral



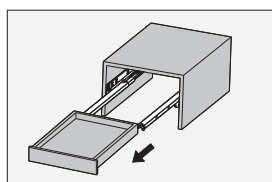
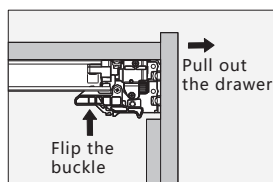
Adjust the depth

### ● Installing the Pop-up, Faucet, and Basin (Not Included )



### ● Uninstall the drawers.

Removal of slide rail with front connector:



\*Flip the buckle of the front connector, then pull the drawer out to disassemble it.

Drawings may not accurately depict product contours.

# INSTALLATION INSTRUCTIONS

---

## VANITY CARE GUIDE

### Vanity Care

- Avoid direct contact with sharp objects to prevent exterior damage.
- Protect from direct sunlight to prevent aging and cosmetic damage.
- Refrain from placing hot objects directly onto the vanity surface.

### Countertop Care

- Our tops are sealed before shipping but may stain, scratch, or chip due to their porous nature.
- Avoid placing hot items directly on the countertop to prevent damage.
- Immediately dry to prevent ring marks or staining.
- Use table mats under potentially scratching objects.
- Dust the vanity with a clean, soft fabric.
- Periodically clean with a cloth dampened in warm water. Use mild dishwashing liquid or stone soap if necessary, then dry with a soft cloth.
- Avoid chemical cleaners, abrasive products, or those containing lemon, vinegar, or acids.
- Reseal the top annually or as needed.

### Cleaning and Maintenance

- Avoid using products containing bleach or ammonia.
- Use wood-friendly products on wooden base vanities.
- Use natural cleaning solutions or soap for exterior surfaces.

Drawings may not accurately depict product contours.