

THERMOSTATIC SHOWER Series INSTALLATION GUIDE



A



B



C



D

CONTENT

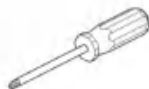
1. Installation Condition	1
2.3 Functions Split Thermostatic Shower Faucet Set (Model:A)	2
3.4 Functions Split Thermostatic Shower Faucet Set (Model:B)	7
4.5 Functions Split Thermostatic Shower Faucet Set (Model:C)	12
5.3 Functions Split Thermostatic Shower Faucet Set (Model:D)	23
6.Shelf Installation	16
7.Body Jets Installation	29
8.Clean and Maintenance	30

♦ Installation Condition

1. Check the Accessories List to verify that all parts are complete in this package.
2. Do not disassemble the main body by yourself.
3. Connect inlet pipes to supply valves.
4. Make sure inlet pipes and supply valves have been installed and cleaned, with no impurities in the pipeline.
5. After installation, check all joints for leakages.
6. Do not leave the rain shower system exposed to a severely corrosive environment.



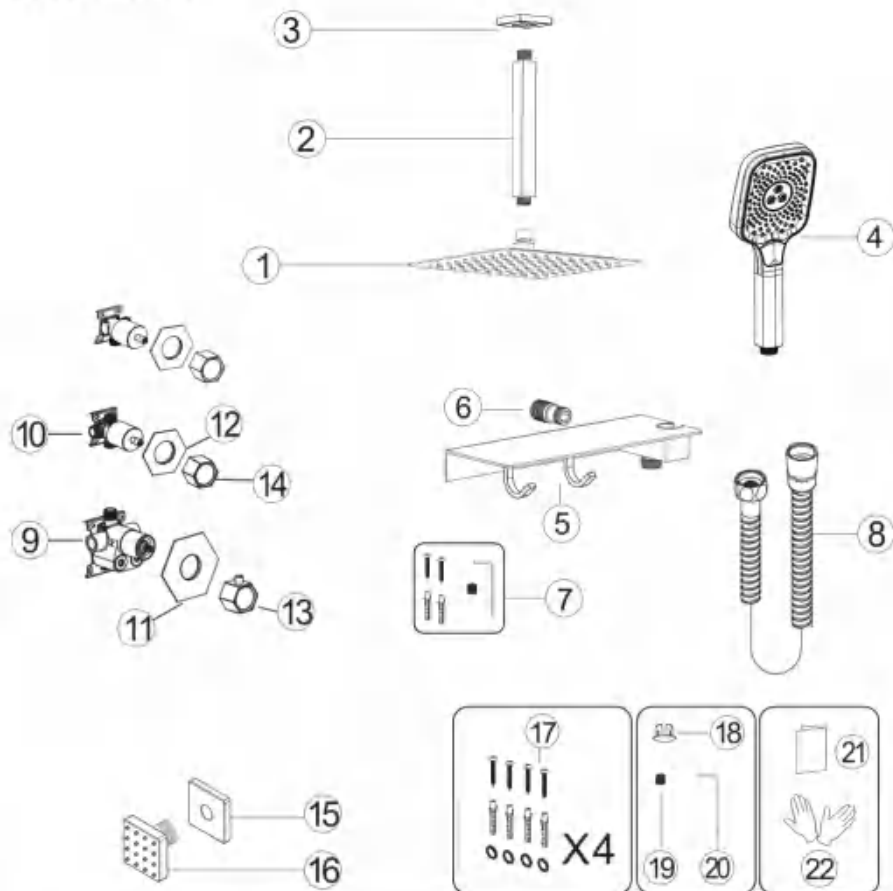
YOU MAY NEED:



3 Function Split Thermostatic Shower Faucet Set

Model:A

Accessories List

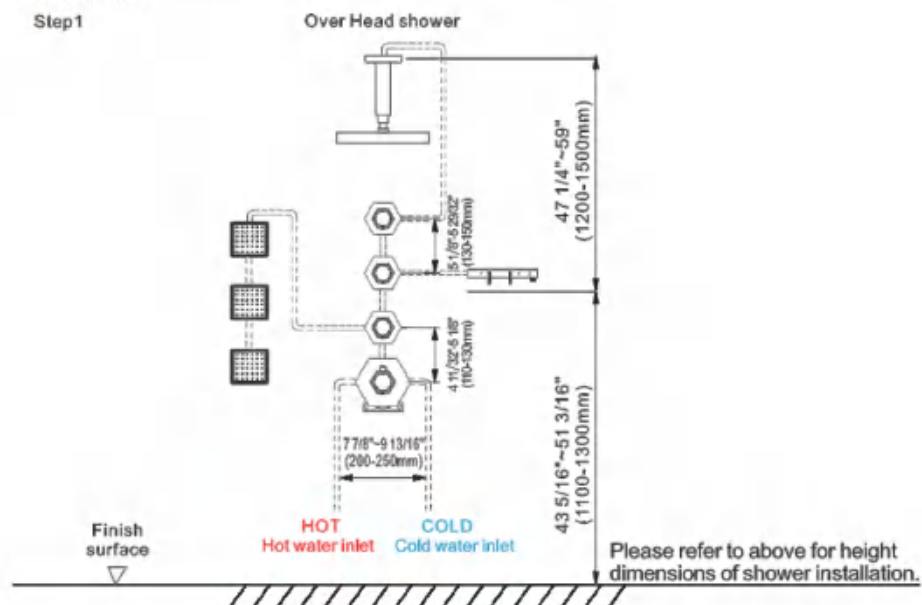


No.	Part name	Qty	No.	Part name	Qty
1	Shower head	1	13	Handle	1
2	Shower arm	1	14	Water diverter	3
3	Shower arm cover	1	15	Body jet cover	3
4	Shower hand	1	16	Body jet	3
5	Shelf	1	17	Main body spare parts	16
6	Spout joint	1	18	Handle cap	4
7	Shelf screws	1	19	Screw	4
8	Shower hose	1	20	Wrench	1
9	Main body	1	21	Instruction manual	1
10	Water diversion main body	3	22	Gloves	2
11	Panel	1			
12	Water diversion main body panel	3			

◆ Essential Dimensions & Water Pipe Line

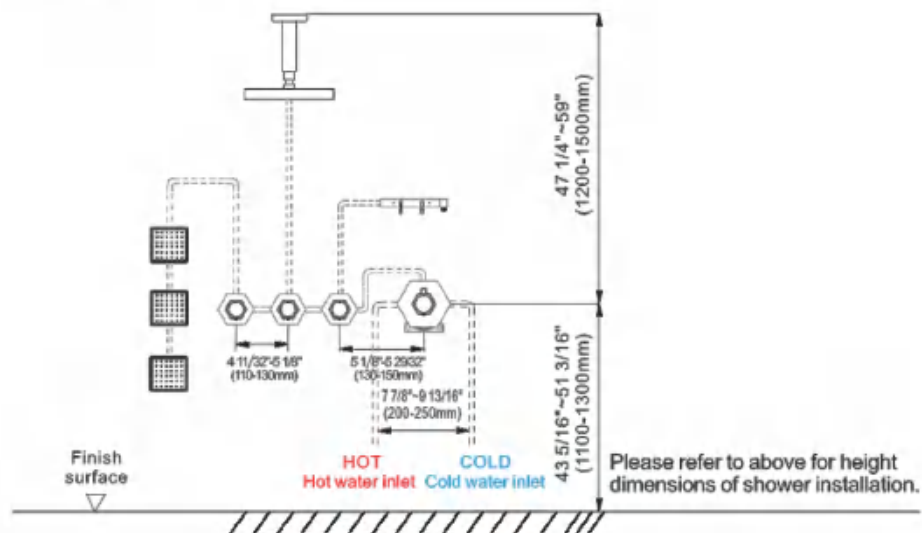
Unit:mm/inch

Step1

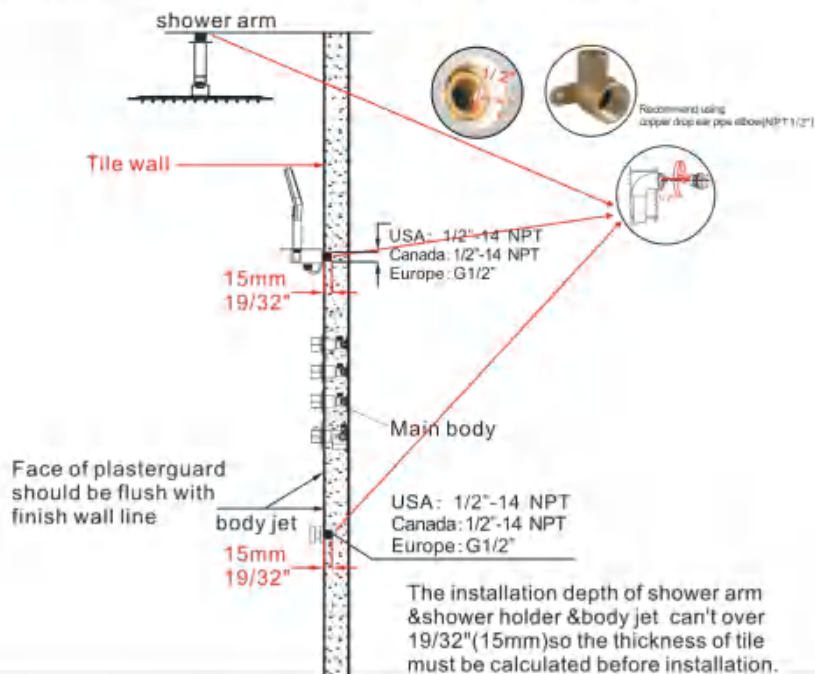


Unit:mm/inch

Step2

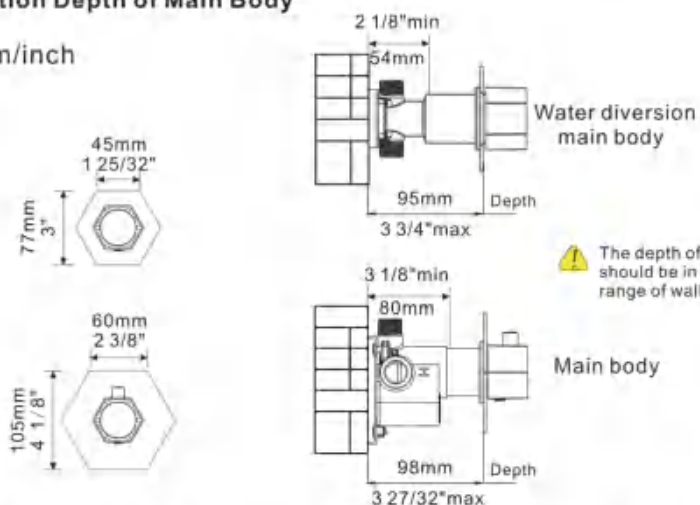


✦ Installation Depth Of Shower Arm & Shower Holder & Body Jet



✦ Installation Depth of Main Body

Unit:mm/inch



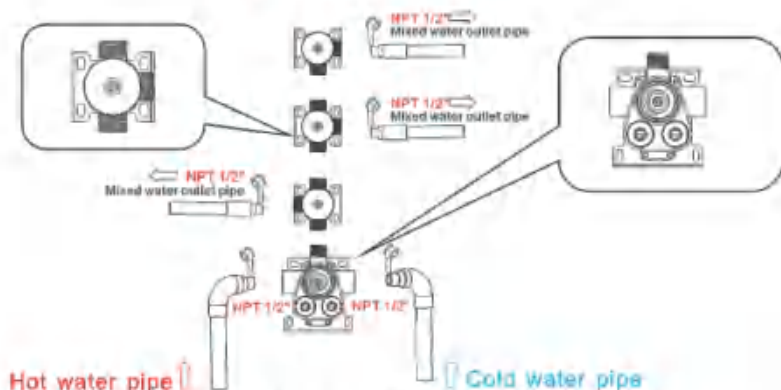
- Notice:**
1. The installation depth of main body should be no less than 3 1/8"(80mm) and no more than 3 3/4"(95mm), including the thickness of tile. Other wise, the panel cannot be installed.
 2. The opening size of ceramic tile shall be smaller than the panel size

* Piping Instructions Before Tiling



Warning: must install hot water and cold water inlet strictly as instructions.

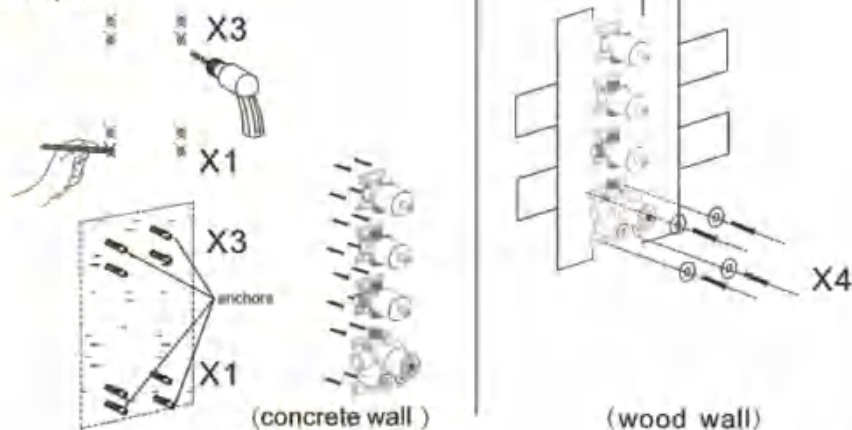
Wrap enough teflon tape



1. As shown in the figure, the inlet and outlet pipes are pre-buried. Please pay attention to the correct direction of installing the pre-buried main body.
2. Install the hot and cold water inlet pipes and three mixed water outlet pipes connected to shower head, hand shower holder and body jet pipes separately.
3. Before tiling, turn on the water to test whether the left and right inlet pipes are tightly connected without leakage. Then, adjust the flow switch to be on to check the mixed outlet pipes for leakages.
4. The handwheel can be installed according to the customer's preference, and the DIY arrangement shape.

* Main Body Valve Installation

Step1

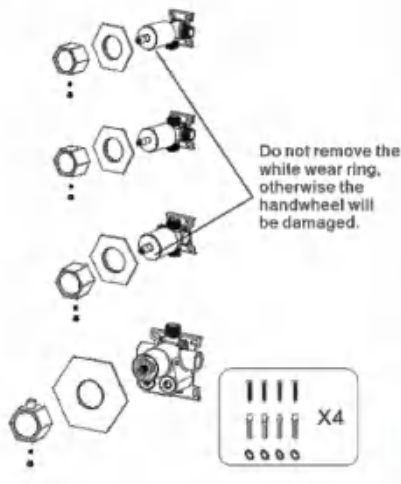


1. Make marks according to the size of the main body valve and then drill anchors into the wall (concrete wall)
2. Lock main body to wood directly with screws (wood wall)

▲ Please note that the level meter should be parallel with the wall, otherwise the panel cannot be installed.

◆ Main Body valve installation

Step2

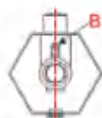
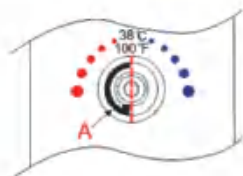


Precautions for handwheel installation

※1: The line can't misplace, it should be kept in a line, otherwise the water temperature of 100°F or 38°C will not be correct.

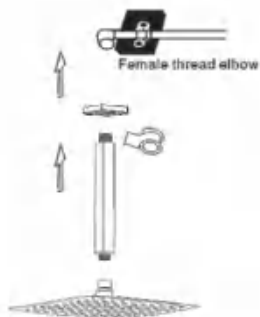


※2: Please ensure that A Plastic locating ring and B handwheel locating pin kept in the same line with 100°F or 38°C. Otherwise, the water temperature will be wrong.



1. Please install panel, water diverters and water diverter rods step by step.
2. Install the handle with the screw and handle cap.

◆ Installation Of Rain Shower Head & Shower Arm

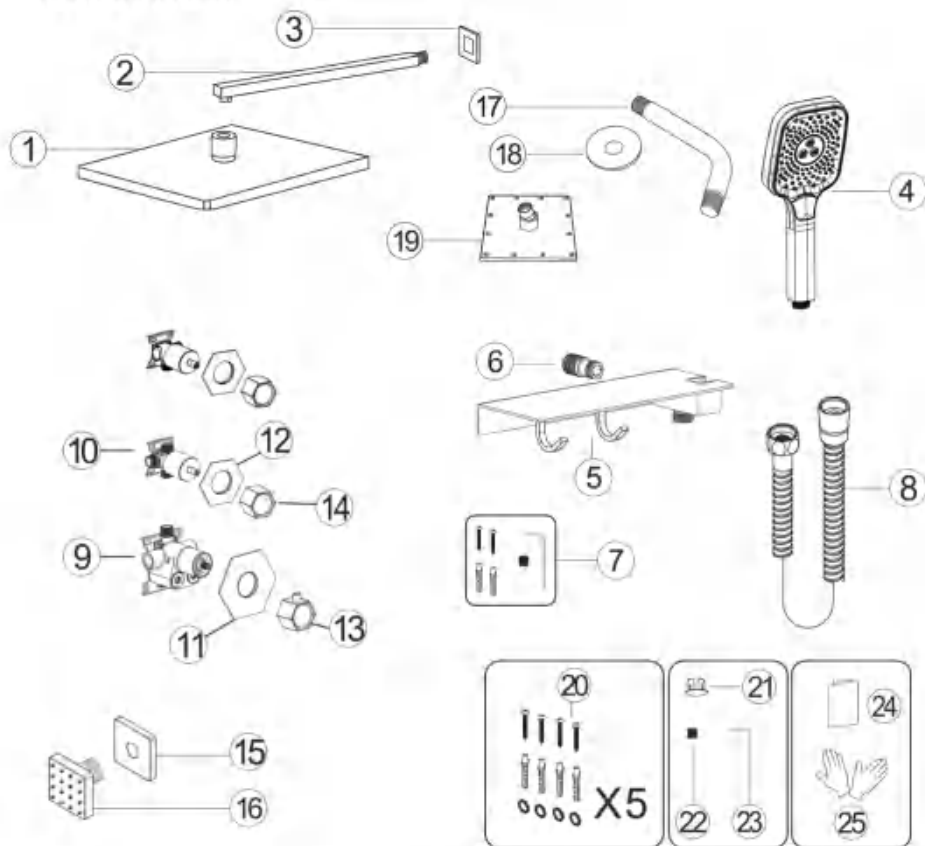


1. Connect shower arm with the cover before screwing arm into riser connection to prevent damage.
2. Fix shower head onto shower arm and apply tape to pipe threads on both ends.
3. Do not overtighten shower head. It is 360° swivel connection.

★ 4 Function Split Thermostatic Shower Faucet Set

Model:B

Accessories List

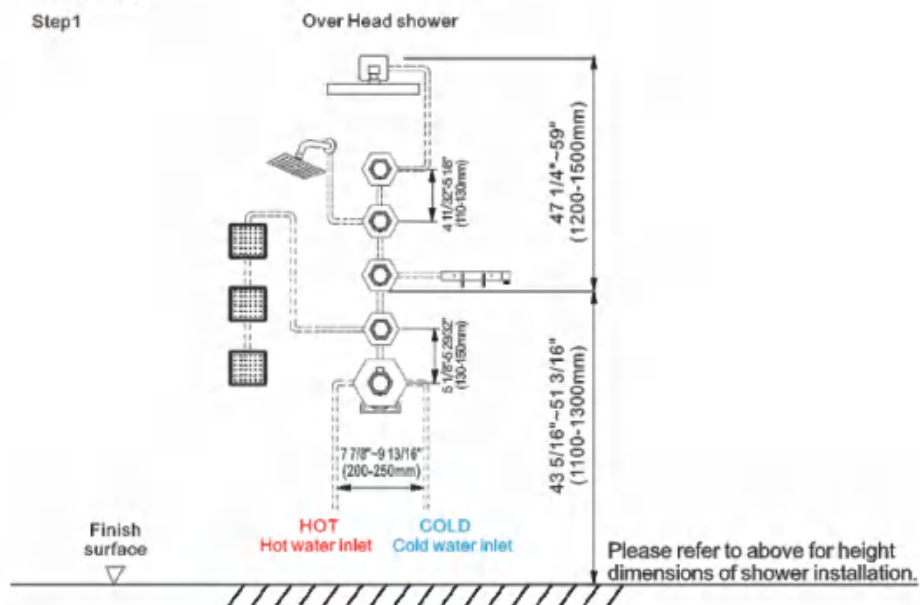


No.	Part name	Qty	No.	Part name	Qty
1	Shower head	1	14	Water diverter	4
2	Shower arm	1	15	Body jet cover	3
3	Shower arm cover	1	16	Body jet	3
4	Shower hand	1	17	Shower arm	1
5	Shelf	1	18	Shower arm cover	1
6	Spout joint	1	19	6in Shower head	1
7	Shelf screws	1	20	Main body spare parts	20
8	Shower hose	1	21	Handle cap	5
9	Main body	1	22	Screw	5
10	Water diversion main body	4	23	Wrench	1
11	Panel	1	24	Instruction manual	1
12	Water diversion main body panel	4	25	Gloves	2
13	Handle	1			

◆ Essential Dimensions & Water Pipe Line

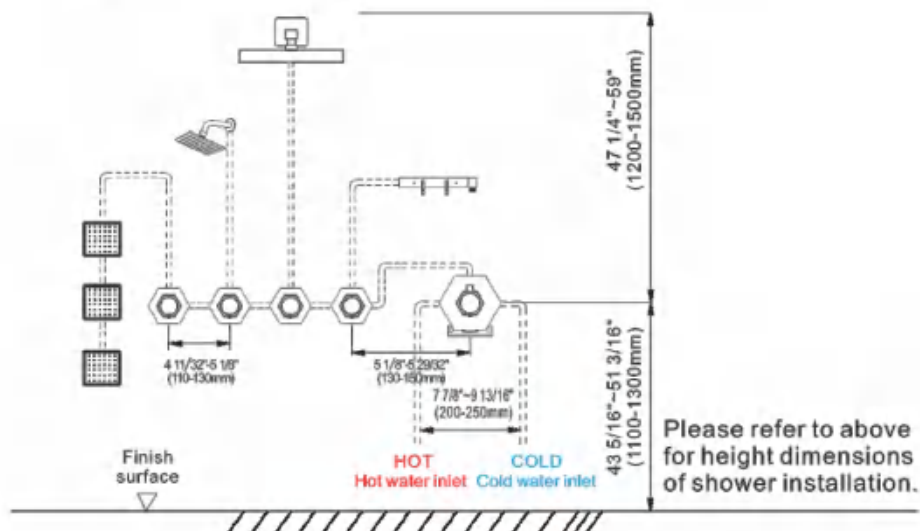
Unit:mm/inch

Step1

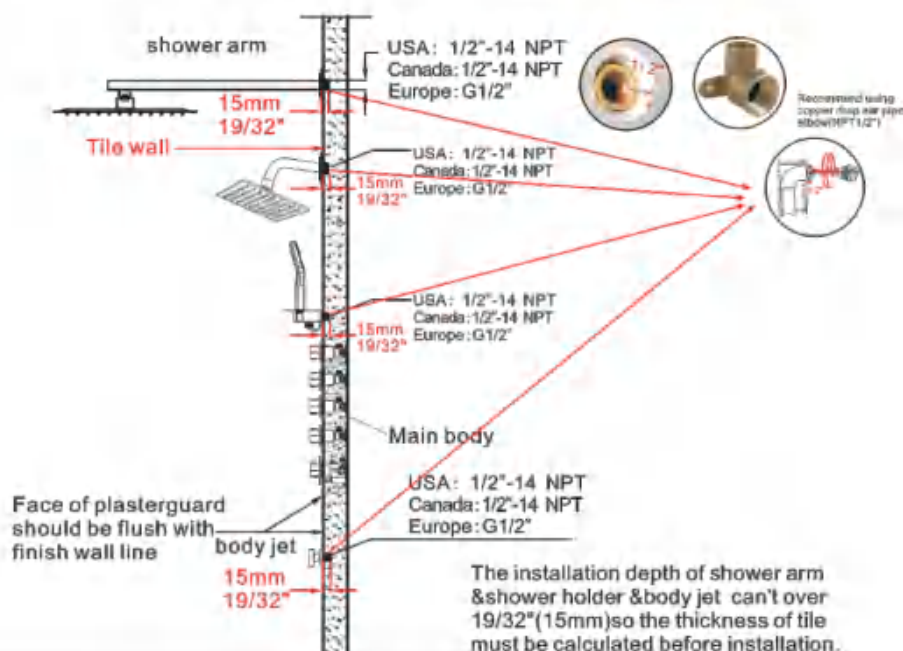


Unit:mm/inch

Step2

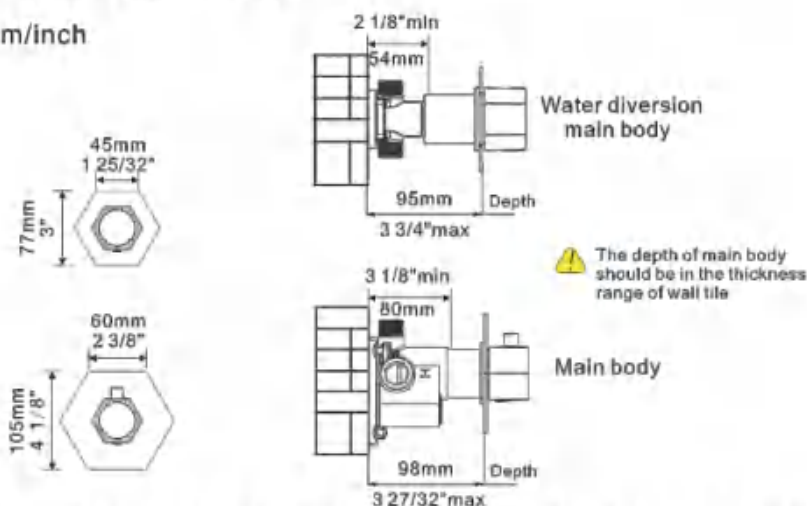


♦ Installation Depth Of Shower Arm & Shower Holder & Body Jet



♦ Installation Depth of Main Body

Unit: mm/inch

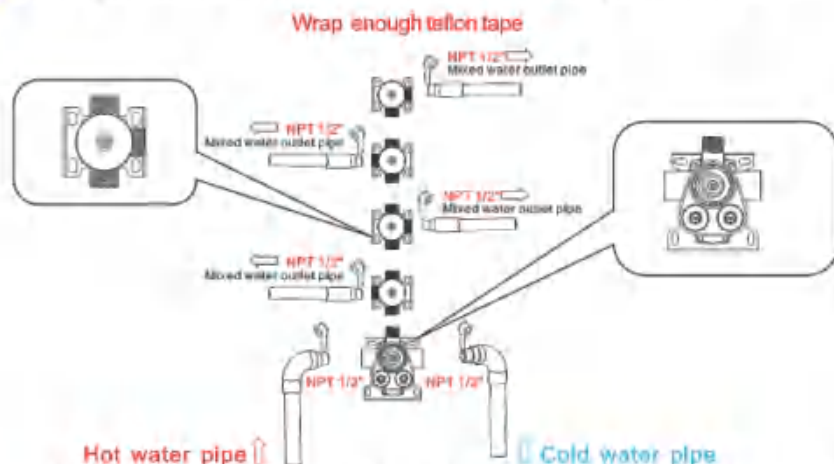


- Notice:** 1. The installation depth of main body should be no less than 3 1/8" (80mm) and no more than 3 3/4" (95mm), including the thickness of tile. Other wise, the panel cannot be installed.
2. The opening size of ceramic tile shall be smaller than the panel size

★ Piping Instructions Before Tiling



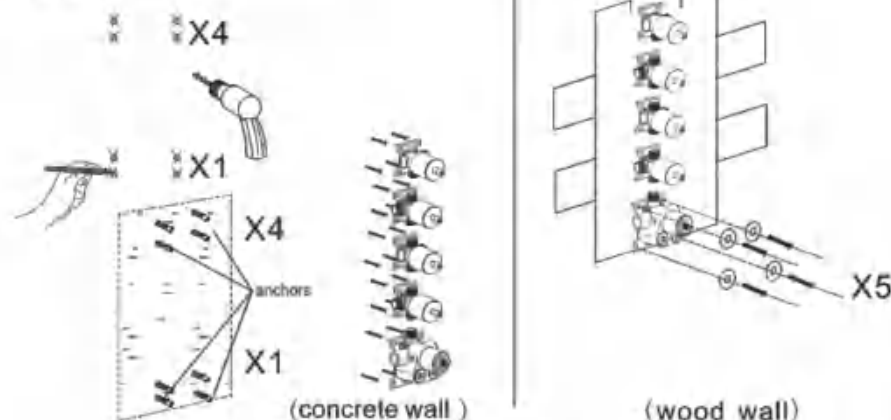
Warning: must install hot water and cold water inlet strictly as instructions.



1. As shown in the figure, the inlet and outlet pipes are pre-buried. Please pay attention to the correct direction of installing the pre-buried main body.
2. Install the hot and cold water inlet pipes and three mixed water outlet pipes connected to shower head, hand shower holder and body jet pipes separately.
3. Before tiling, turn on the water to test whether the left and right inlet pipes are tightly connected without leakage. Then, adjust the flow switch to be on to check the mixed outlet pipes for leakages.
4. The handwheel can be installed according to the customer's preference, and the DIY arrangement shape.

★ Main Body Valve Installation

Step1

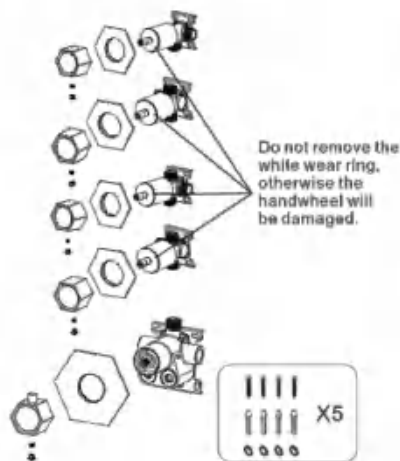


1. Make marks according to the size of the main body valve and then drill anchors into the wall (concrete wall)
2. Lock main body to wood directly with screws (wood wall)

▲ Please note that the level meter should be parallel with the wall, otherwise the panel cannot be installed.

◆ Main Body valve installation

Step2

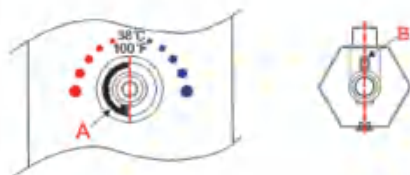


Precautions for handwheel installation

※1: The line can't misplace, it should be kept in a line, otherwise the water temperature of 100 F or 38°C will not be correct.

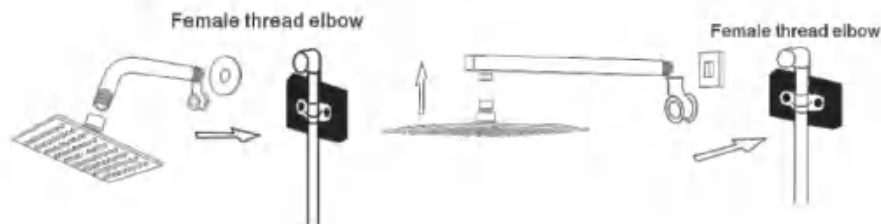


※2: Please ensure that A Plastic locating ring and B handwheel locating pin kept in the same line with 100 F or 38°C. Otherwise, the water temperature will be wrong.



1. Please install panel, water diverters and water diverter rods step by step.
2. Install the handle with the screw and handle cap.

◆ Installation Of Rain Shower Head & Shower Arm

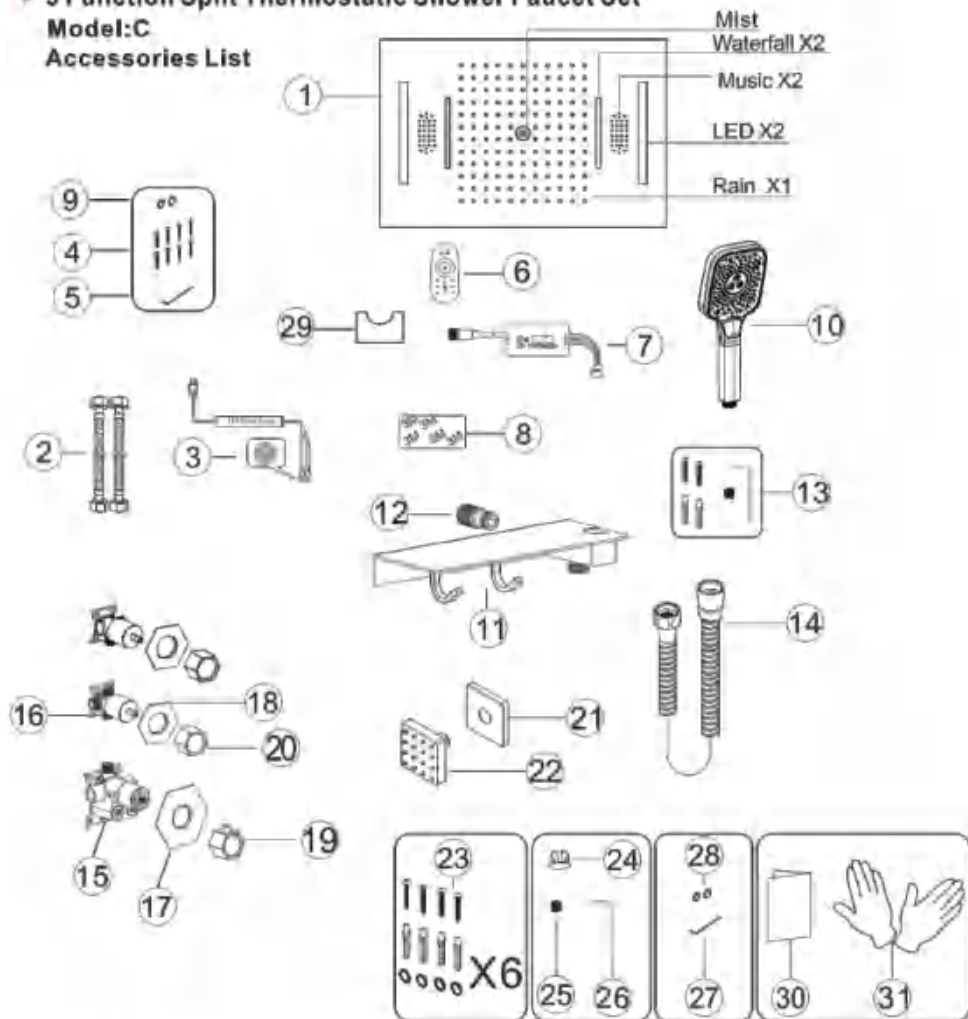


1. Connect shower arm with the cover before screwing arm into riser connection to prevent damage.
2. Fix shower head onto shower arm and apply tape to pipe threads on both ends.
3. Do not overtighten shower head. It is 360° swivel connection.

5 Function Split Thermostatic Shower Faucet Set

Model:C

Accessories List

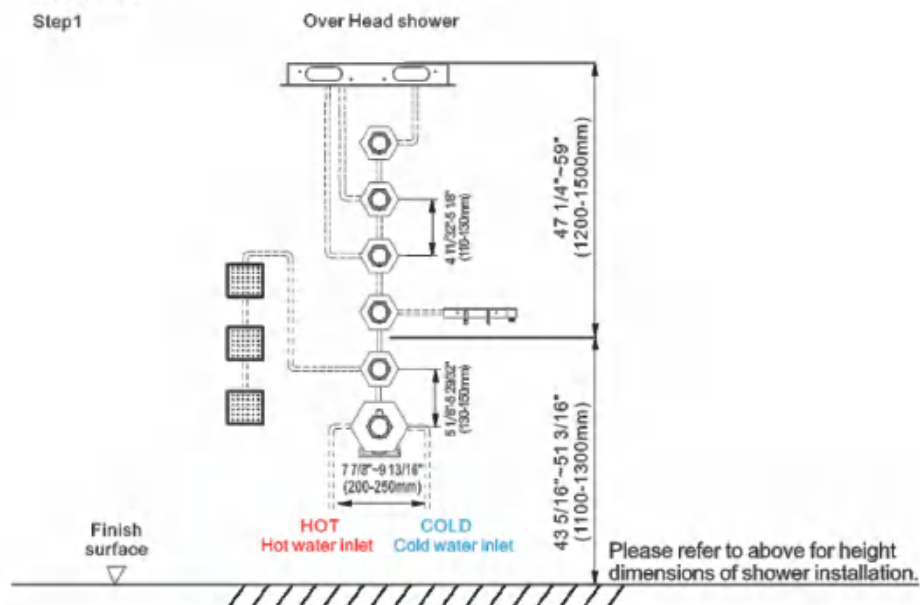


No.	Part name	Qty	No.	Part name	Qty	No.	Part name	Qty
1	Shower head body	1	12	Spout joint	1	23	Main body spare parts	24
2	Corrugated pipe	2	13	Shelf screws	1	24	Handle cap	6
3	Water proof power supply	1	14	Shower hose	1	25	Handle screw	6
4	Shower head screw	8	15	Main body	1	26	Handle Wrench	1
5	Shower head wrench	1	16	Water diversion main body	5	27	Holder Wrench	1
6	Controller	1	17	Panel	1	28	Holder spare O-ring	1
7	Wifi controller	1	18	Water diversion main body panel	5	29	Controller pedestal	1
8	Wifi controller tape	1	19	Handle	1	30	Instruction manual	1
9	Spare rubber washer	2	20	Water diverter	5	31	Gloves	2
10	Hand shower	1	21	Body jet cover	3			
11	Shelf	1	22	Body jet	3			

◆ Essential Dimensions & Water Pipe Line

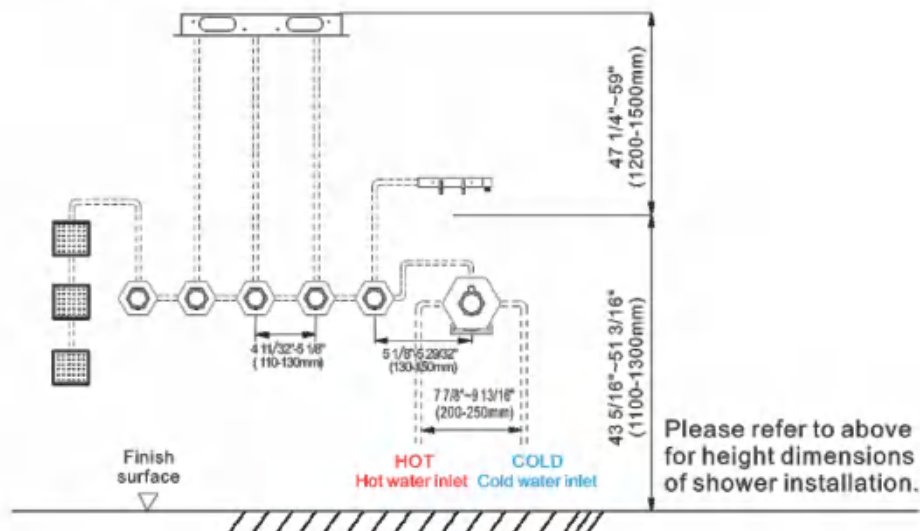
Unit:mm/inch

Step1

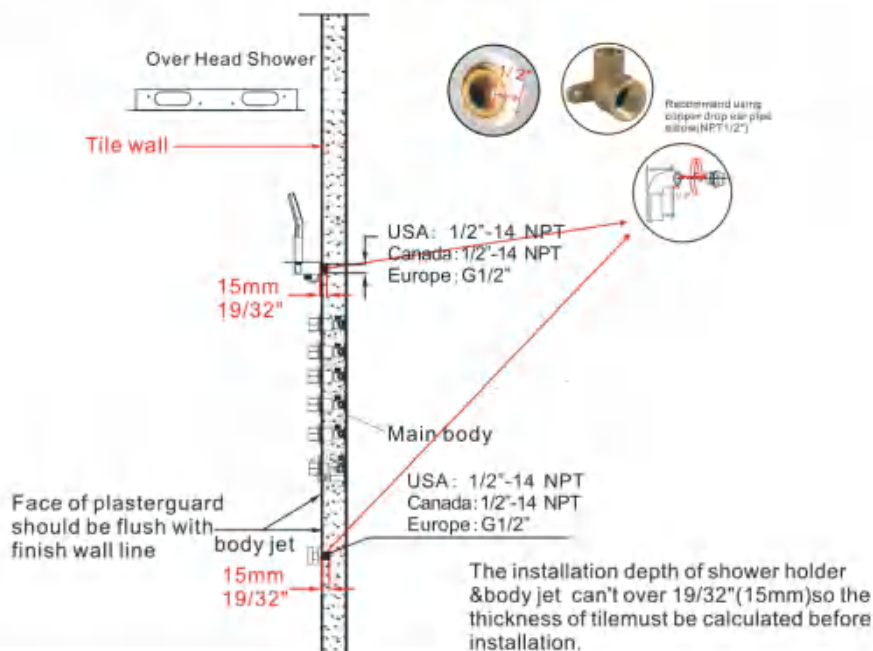


Unit:mm/inch

Step2

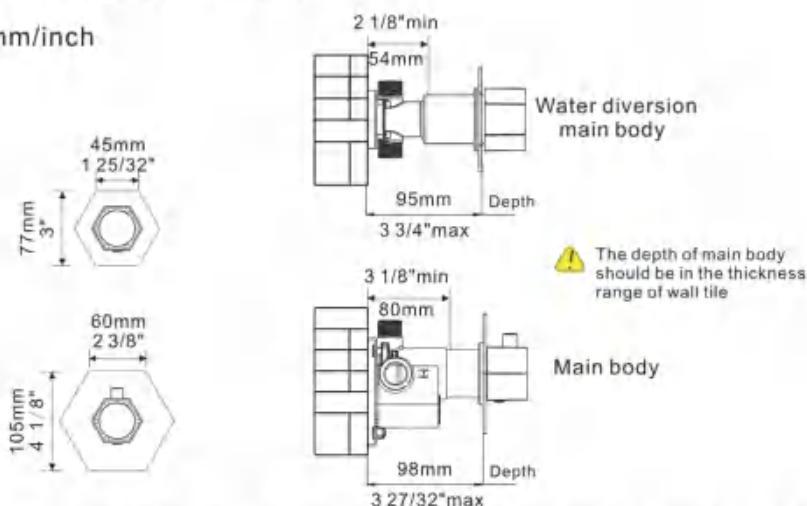


◆ Installation Depth Of Shower Holder & Body Jet



◆ Installation Depth of Main Body

Unit:mm/inch

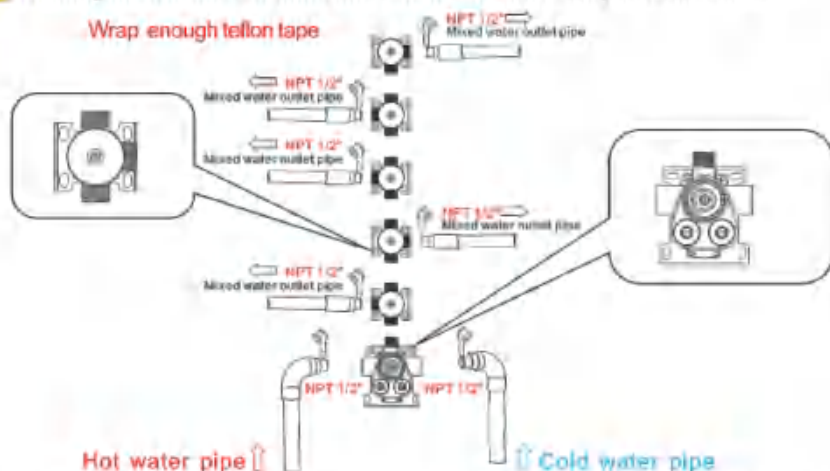


- Notice:** 1. The installation depth of main body should be no less than 3 1/8"(80mm) and no more than 3 3/4"(95mm), including the thickness of tile. Other wise, the panel cannot be installed.
2. The opening size of ceramic tile shall be smaller than the panel size

* Piping Instructions Before Tiling



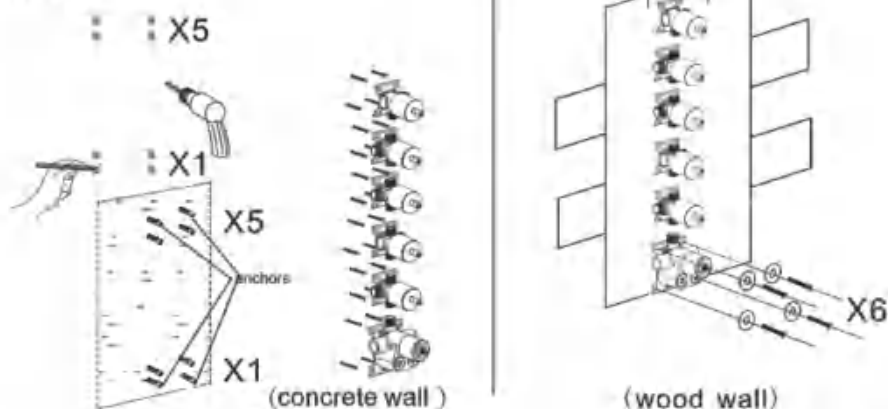
Warning: must install hot water and cold water inlet strictly as instructions.



1. As shown in the figure, the inlet and outlet pipes are pre-buried. Please pay attention to the correct direction of installing the pre-buried main body.
2. Install the hot and cold water inlet pipes and three mixed water outlet pipes connected to shower head, hand shower holder and body jet pipes separately.
3. Before tiling, turn on the water to test whether the left and right inlet pipes are tightly connected without leakage. Then, adjust the flow switch to be on to check the mixed outlet pipes for leakages.
4. The handwheel can be installed according to the customer's preference, and the DIY arrangement shape.

* Main Body Valve Installation

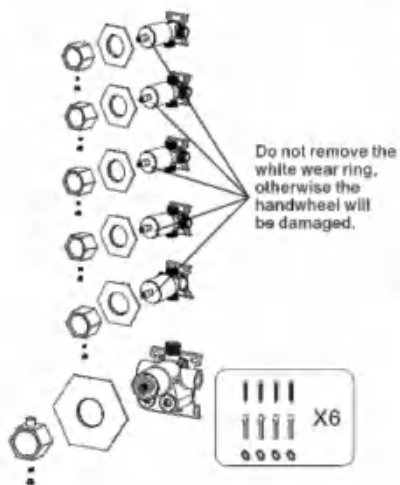
Step1



1. Make marks according to the size of the main body valve and then drill anchors into the wall (concrete wall)
 2. Lock main body to wood directly with screws (wood wall)
- ▲ Please note that the level meter should be parallel with the wall, otherwise the panel cannot be installed.

◆ Main Body valve installation

Step2

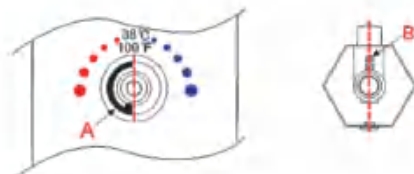


Precautions for handwheel installation

※1: The line can't misplace, it should be kept in a line, otherwise the water temperature of 100 F or 38°C will not be correct.

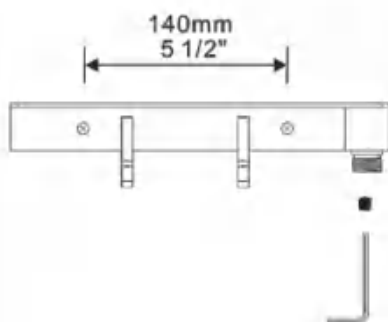
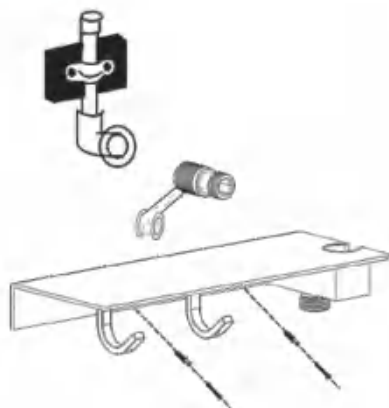


※2: Please ensure that A Plastic locating ring and B handwheel locating pin kept in the same line with 100 F or 38°C. Otherwise, the water temperature will be wrong.



1. Please install panel, water diverters and water diverter rods step by step.
2. Install the handle with the screw and handle cap.

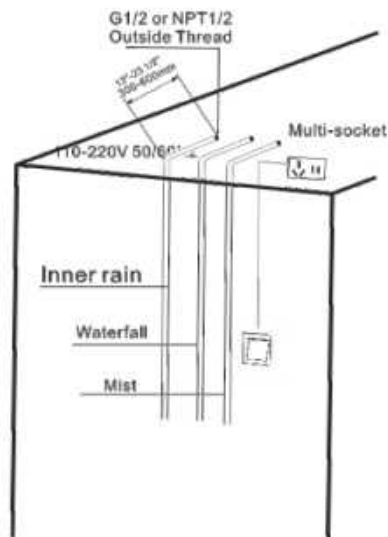
◆ Shelf Installation



Install the nozzle connector into the water inlet, place the shelf, fix the shelf with screws, and finally screw the screw into the threaded outlet pipe with wrench.

◆ Plumbing Layout of Shower Head

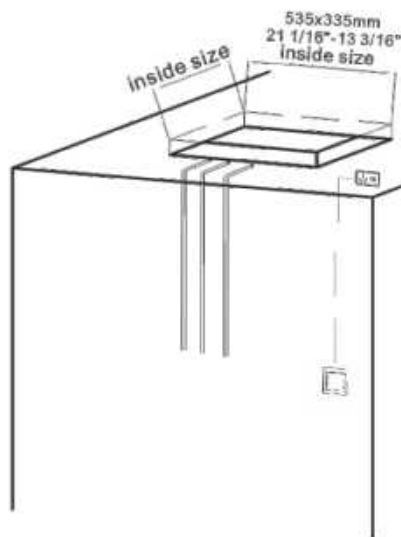
①



Install the power switch in the appropriate position, lay out water pipeline and connect it to the main body.

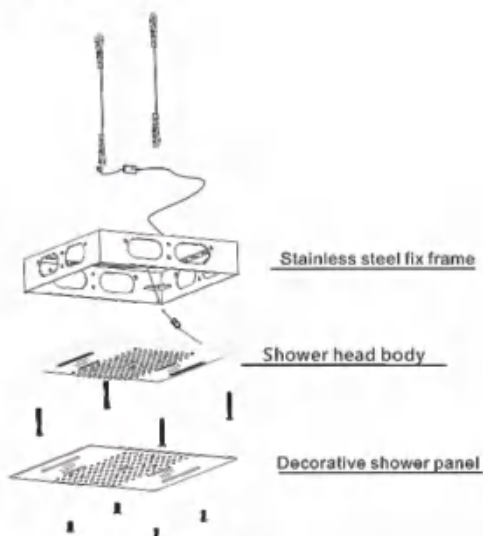
◆ Holes on Ceiling

②



◆ Shower Head Exploded View

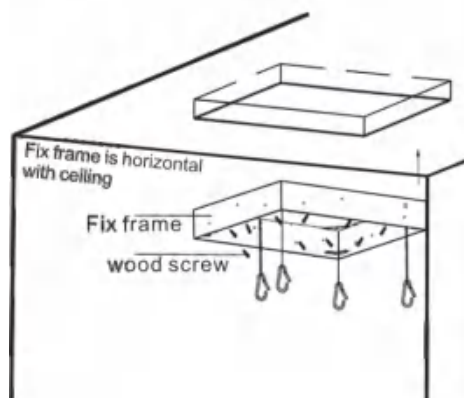
③



According to the mark (Remove Install) on the top of shower head panel, respectively unscrew the decorative shower panel, shower head body and fix frame.

◆ Fix Frame Installation

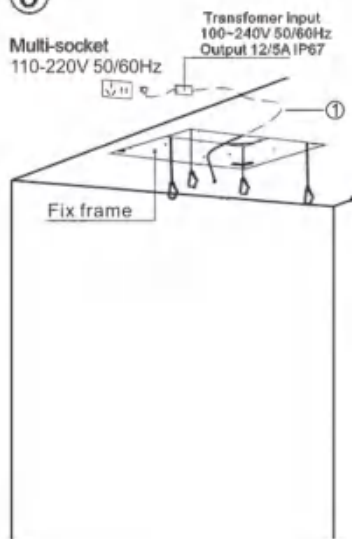
④



Fasten the fix frame to the wooden frame with 8 screws.

◆ Layout for Power

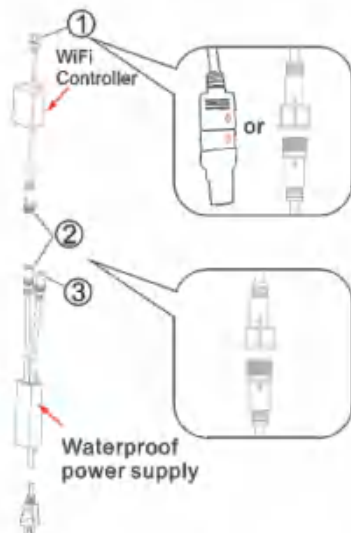
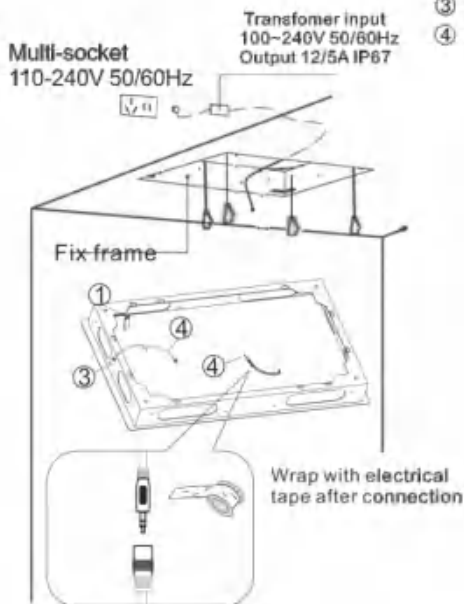
⑤



• LED (Single Line) Connection

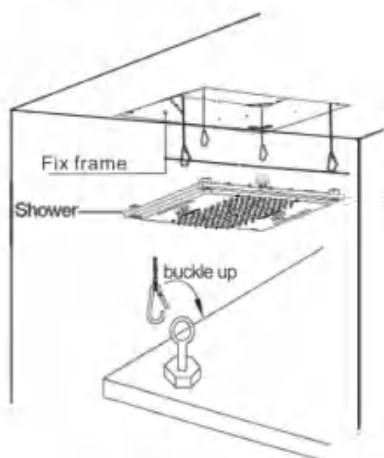
⑥

- ① to ① wifi controuer wrap it with adhesive tape to prevent it from falling off.
- ② to ② connect the Power supply and WiFi.
- ③ to ③ connect the Power supply and sound.
- ④ to ④ connect the sound

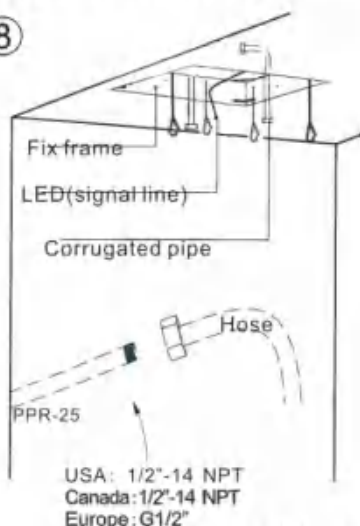


• Shower Head Body Installation • Layout for Water Pipe

⑦



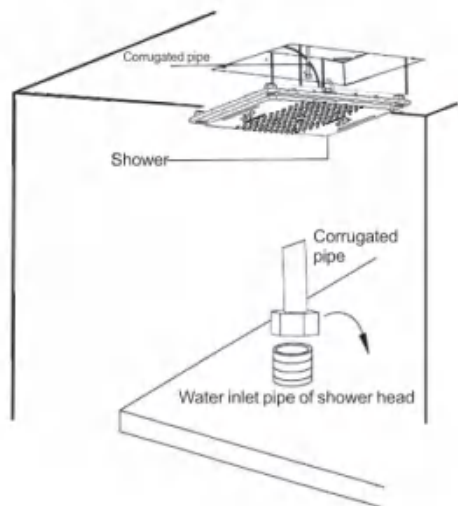
⑧



Connect one end of the corrugated pipe to the embedded PPR water pipe and the other end to the water inlet pipe on the back of shower head.

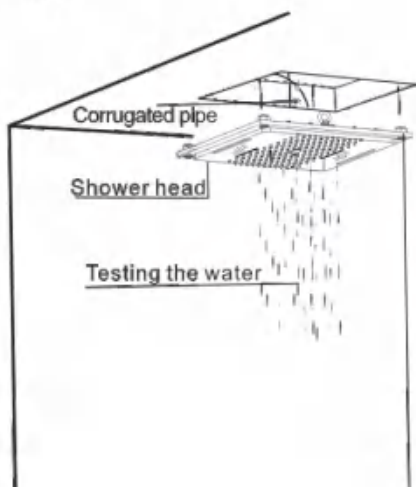
◆ Water Inlet Pipe Connection

9



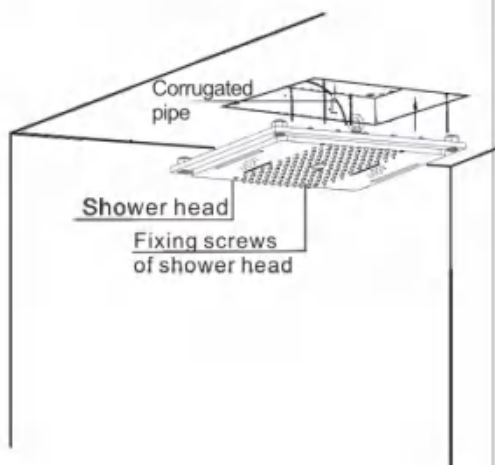
◆ Water Testing

10



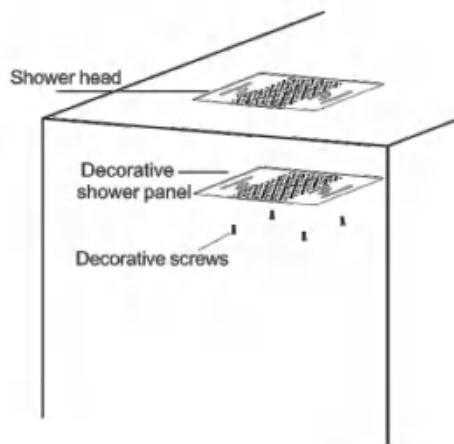
◆ Shower Head Installation

11



◆ Decorative Shower Panel Installation

12



★ LED Touch Remote Instruction

Main parameter:

Panel controller:

Working Temp.: -20~60°C

Supply Voltage: DC12-24V

Size: L50*W35*H23mm

1 15/16" * 1 6/16" * 14/16"

Output: 3 channels

Output Current: <2A(each channel)

Connection mode: common anode

Touch Remote:

Working voltage: 1.5V*3V

Emission current: 10mA

Working Current: 300uA

Standby Current: 3uA

Standby time: 6 months

Control Distance: 20M

Color pulley point: 60



Touch remote has 9 touch keys, with each functioning as follows:

- ① Turn ON/OFF
- ⑤ Mode Switch
- ② Color Touch Ring
- ③⑥ Color Temperature adjusting
- ④⑧ Dynamic Speed adjusting
- ⑦⑨ Dynamic Brightness adjusting



Mode:

NO.	FUNCTION	REMOTE
1	Static red	Brightness is adjustable Speed is unadjustable
2	Static green	
3	Static blue	
4	Static purple	
5	Static blue-green	
6	Static yellow	
7	Static white	
8	R G B Jumping	Brightness is adjustable Speed is adjustable
9	R G B Gradual	
10	7-Colors Jumping	
11	7-Colors Gradual	

2.Power supply management:

The remote will enter the standby state (untouchable state) when pressed for more than 20s. If it happens, please slightly shake it once and then the remote will come back to the normal working state (touchable state).

3.Indicator light instruction:

3.1. The remote is idle or sending signal when the PWR is bright; when the PWR is off, it will enter the standby state.

3.2. When RF is bright, it means the remote is sending signal; off means there is no signal sending.

Controller connections shown:



Remarks:

1. This product should be commissioned and installed by qualified personnel.
2. This product can not be waterproof, need to avoid sun and rain, if installed outdoors, please use waterproof box.
3. Good heat dissipation conditions will extend the life of the LED controller, please install the product in a well-ventilated environment.
4. Please do not install or use such products in lightning, thunder, strong magnetic or high voltage applications.
5. Please check whether the output voltage of the LED power supply used meets the product voltage range requirements.
6. The diameter of the wire used must be sufficient to load the connected LED luminaire, and ensure that the wiring is firm, to avoid the wire overheating or poor contact triggers the accident.
7. Before power-on debugging, ensure that all wiring is correct to avoid damage to the luminaire due to wiring errors.

◆ Music Connection Description

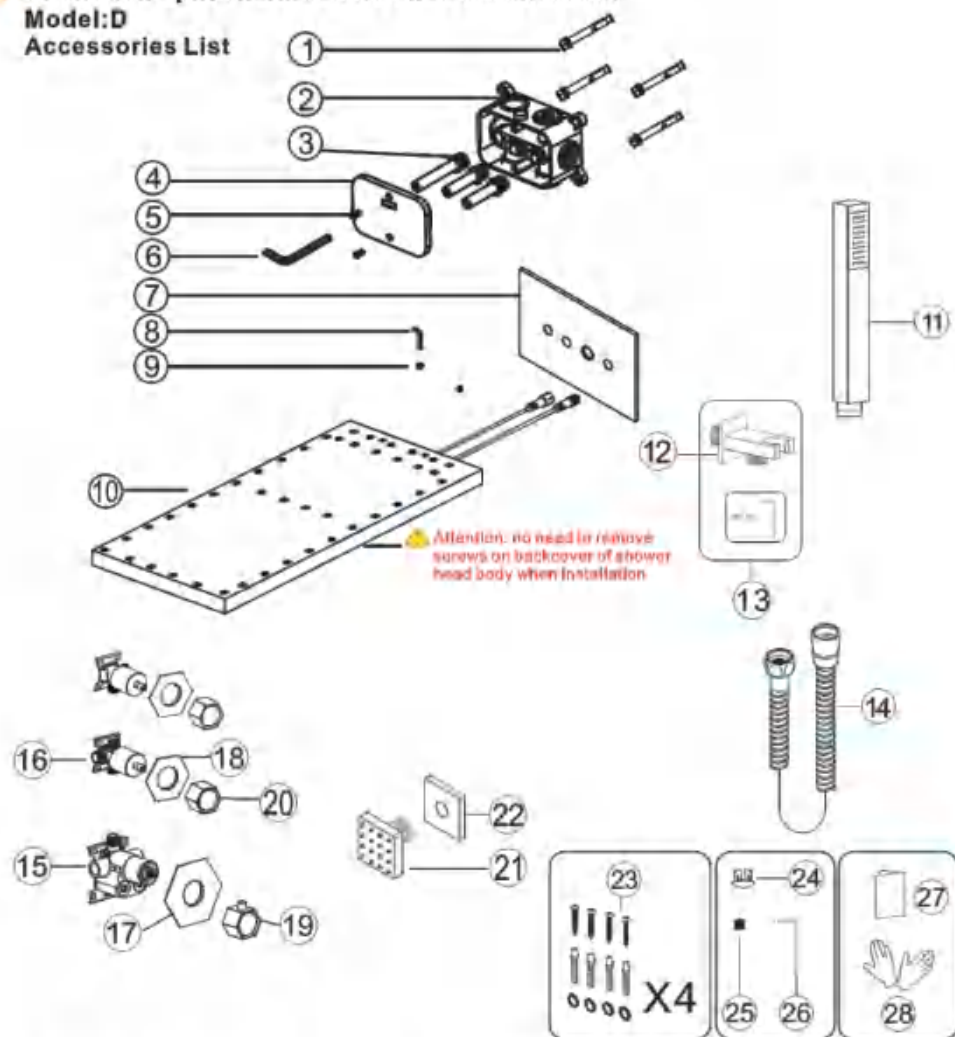


Turn on the Bluetooth of your mobile phone and find the name of the shower head Bluetooth then connect it. So that you can start playing wonderful music.

3 Function Split Thermostatic Shower Faucet Set

Model:D

Accessories List



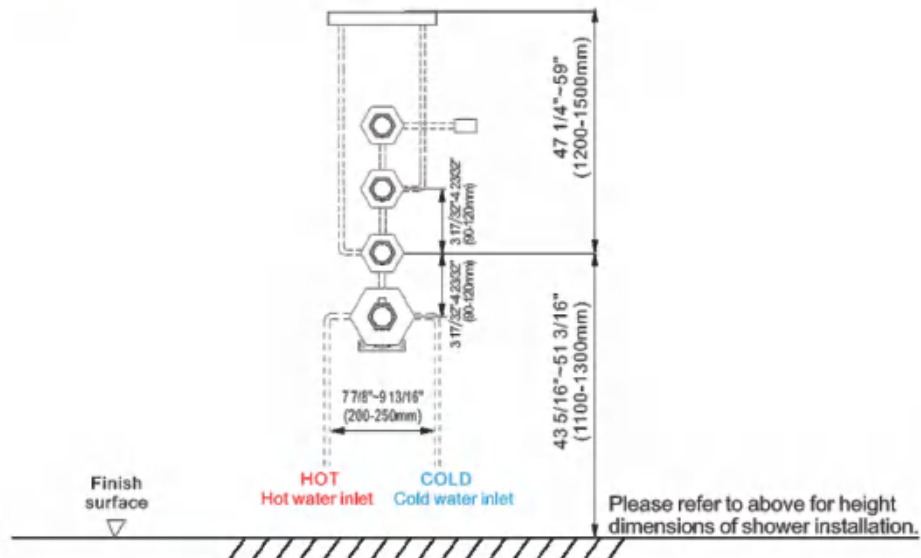
No.	Part name	Qty	No.	Part name	Qty	No.	Part name	Qty
1	Expansion screws	4	11	Shower hand	1	21	Body jet	3
2	Inwall box	1	12	Hand shower holder	1	22	Body jet cover	3
3	Water inlet	3	13	Holder parts	1	23	Main body gasket parts	16
4	Cover	1	14	Shower hose	1	24	Handle cap	4
5	Screw	2	15	Main body	1	25	Handle screw	4
6	S8 Allen key	1	16	Water diversion main body	3	26	Handle Wrench	1
7	Flange	1	17	Panel	1	27	Instruction manual	1
8	Allen key 2.5	1	18	Water diversion main body panel	3	28	Gloves	2
9	M4 screw	2	19	Handle	1			
10	Shower head body	1	20	Waterdiverter	3			

◆ Essential Dimensions & Water Pipe Line

Unit:mm/inch

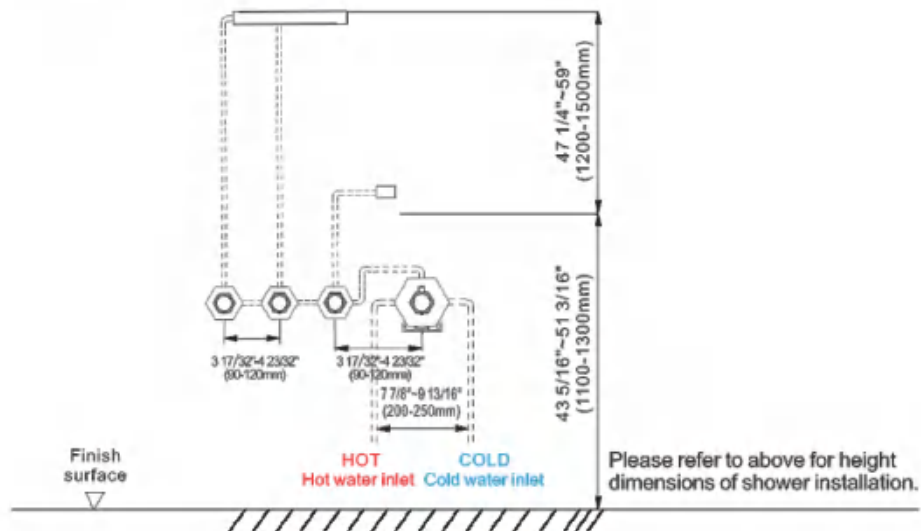
Step1

Over Head shower

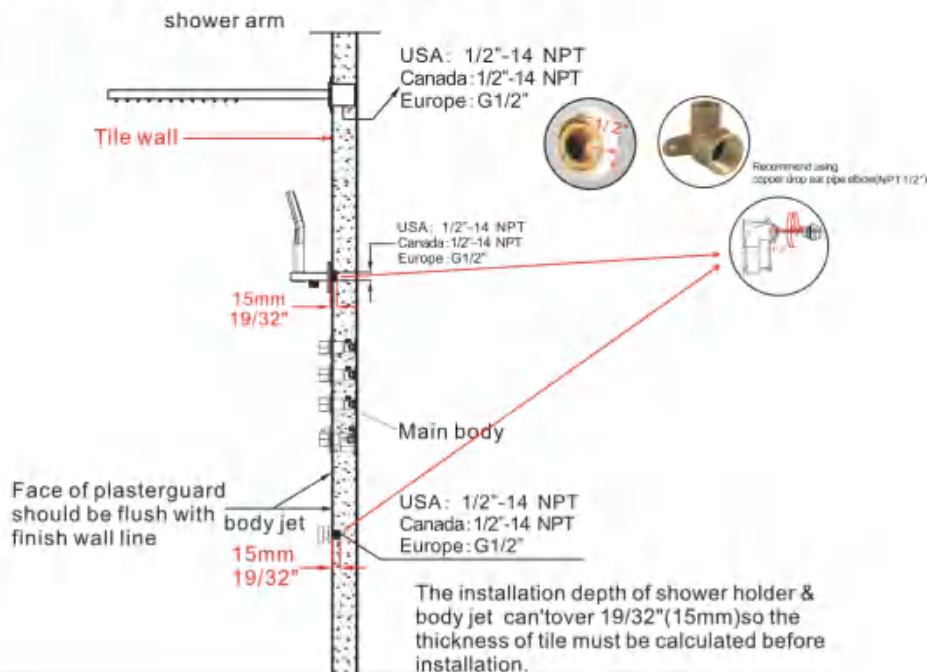


Unit:mm/inch

Step2

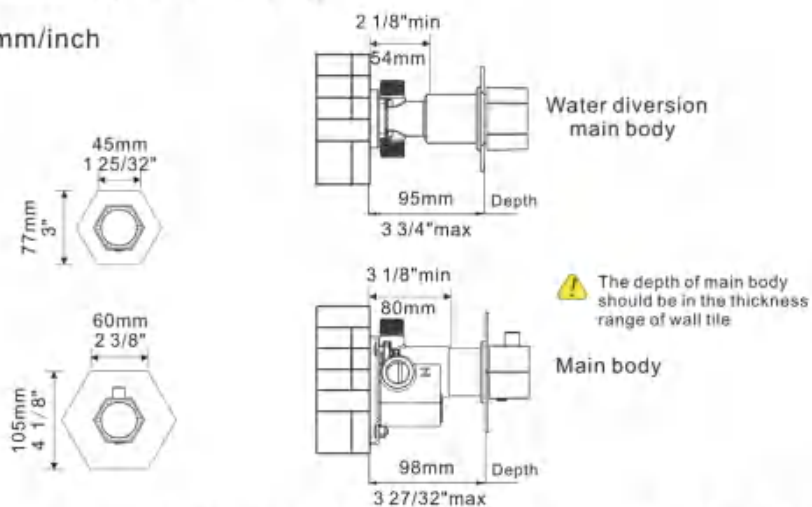


◆ Installation Depth Of Shower Holder & Body Jet



◆ Installation Depth of Main Body

Unit:mm/inch



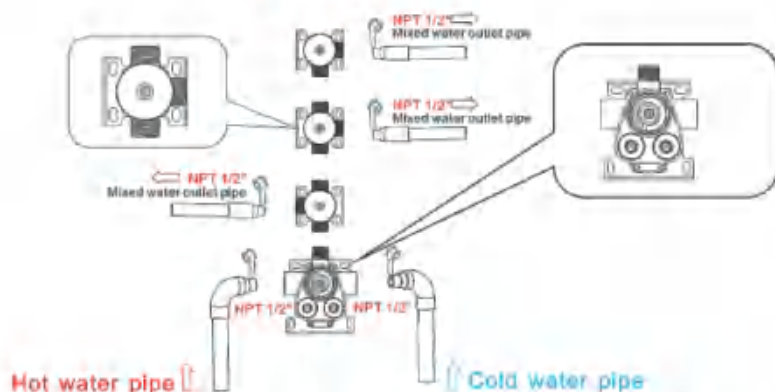
- Notice:**
1. The installation depth of main body should be no less than 3 1/8"(80mm) and no more than 3 3/4"(95mm), including the thickness of tile. Other wise, the panel cannot be installed.
 2. The opening size of ceramic tile shall be smaller than the panel size

★ Piping Instructions Before Tiling



Warning: must install hot water and cold water inlet strictly as instructions.

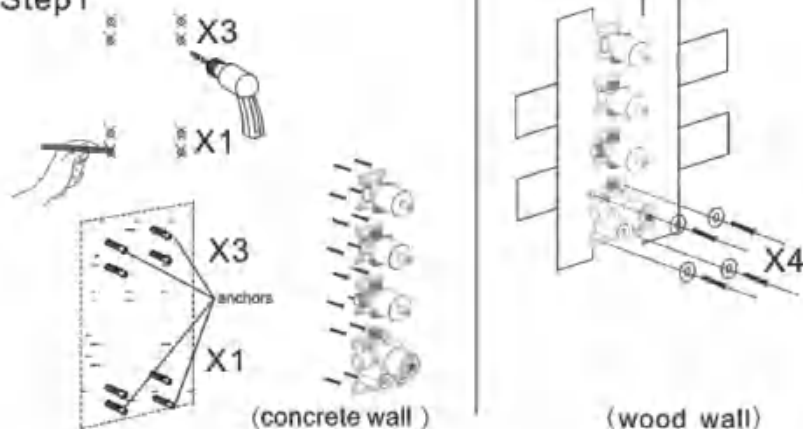
Wrap enough teflon tape



1. As shown in the figure, the inlet and outlet pipes are pre-buried. Please pay attention to the correct direction of installing the pre-buried main body.
2. Install the hot and cold water inlet pipes and three mixed water outlet pipes connected to shower head, hand shower holder and body jet pipes separately.
3. Before tiling, turn on the water to test whether the left and right inlet pipes are tightly connected without leakage. Then, adjust the flow switch to be on to check the mixed outlet pipes for leakages.
4. The handwheel can be installed according to the customer's preference, and the DIY arrangement shape.

★ Main Body Valve Installation

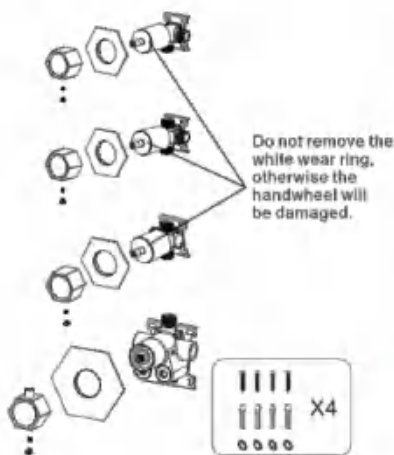
Step1



1. Make marks according to the size of the main body valve and then drill anchors into the wall (concrete wall)
 2. Lock main body to wood directly with screws (wood wall)
- ▲ Please note that the level meter should be parallel with the wall, otherwise the panel cannot be installed.

◆ Main Body valve installation

Step2



Precautions for handwheel installation

※1: The line can't misplace, it should be kept in a line, otherwise the water temperature of 100 F or 38 C will not be correct.

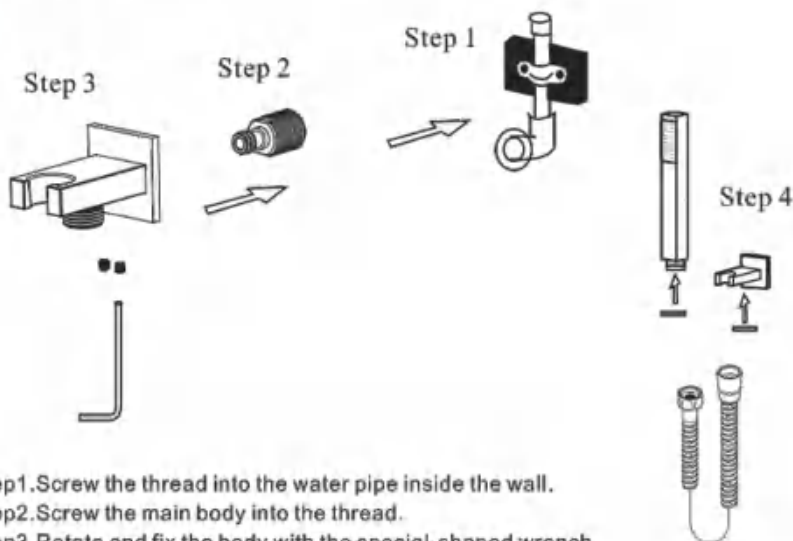


※2: Please ensure that A Plastic locating ring and B handwheel locating pin kept in the same line with 100 F or 38 C. Otherwise, the water temperature will be wrong.



1. Please install panel, water diverters and water diverter rods step by step.
2. Install the handle with the screw and handle cap.

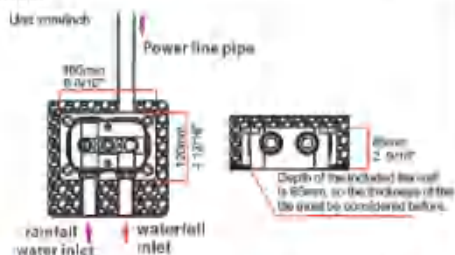
◆ Hand Shower Holder Installation



- Step1. Screw the thread into the water pipe inside the wall.
- Step2. Screw the main body into the thread.
- Step3. Rotate and fix the body with the special-shaped wrench.
- Step4. Connect hand shower and the hose.

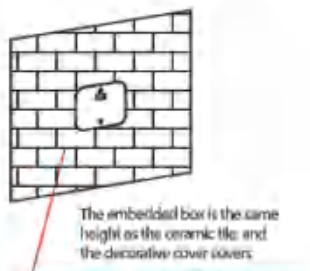
• 22in Shower Head Installation

1. Dig the wall according to the following dimensions, and correctly to connect the rainfall water inlet, waterfall inlet and power lines.



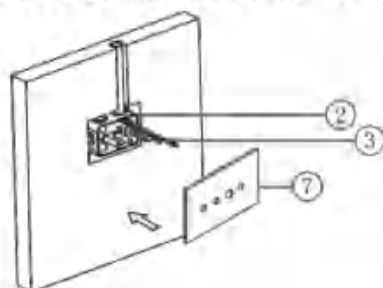
! If the embedded box in wall buried too deep, the shower head will not be installed correctly, which will lead to water leakage and sagging problem. Pay special attention to the installation depth.

3. After sealing the ceramic tile and covering the wall with the decorative cover, keep the embedded box at the same level with the wall.

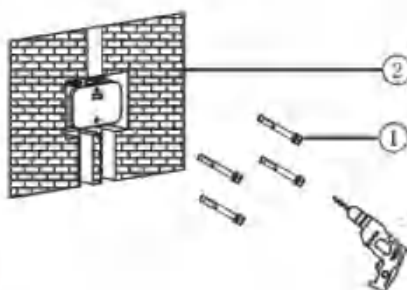


5. Install the decorative panel as shown in the figure

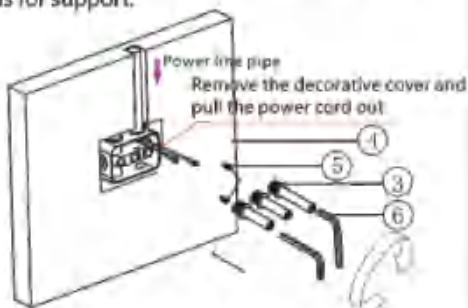
Warning: Steps 4-5-6 should be done to test the horizontal and vertical position of the shower head before sealing the wall, Avoid the trouble of maintenance after wall sealing.



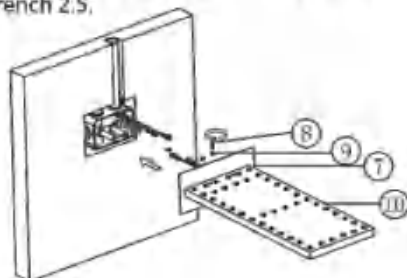
2. Lock the embedded box with reference to the level gauge, ensure the level gauge is level, and detect the leakage for 24 hours.



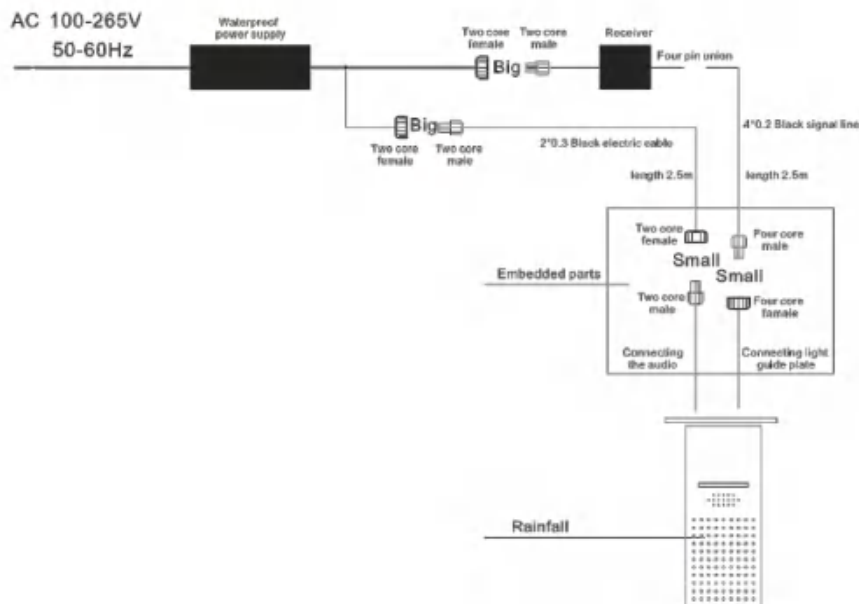
4. Install the main body of shower head. Remove the box decorative cover and plug firstly, and screw the three water inlets into the embedded box with S8 Allen wrench. The longest function is for support.



6. Push the main body of shower head into the corresponding water inlet, Connect the power cord connector of the main body with the power cord connector of the shower head, and tighten the shower with M4 screws and Allen wrench 2.5.



◆ Top spray installation wiring



◆ Body Jets Installation

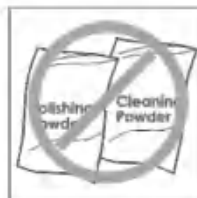


- Step 1. Wrap the threaded pipe of NPT1/2 with Teflon tape and screw it into the wall.
 Step 2. Cut off excess part with a saw.
 Step 3. Screw the massage body jet onto the wall.

• Clean and Maintenance

Do's

1. In order to keep the mixer surface bright, please clean the mixer regularly.
2. Rinse faucet with clean water and wipe it with soft cotton cloth.
3. Use one of the following cleaners to remove dirt on the surface:
 - a. Mild liquid cleaner.
 - b. Colorless glass cleaner and powder cleaner which does not cause abrasion and can be dissolved completely.
 - c. Polish liquid which does not cause abrasion.



Don'ts

- a. Avoid using cleaning powder, harsh cleaning chemicals, brushes and coarse cloth to prevent scratching and friction.
- b. Do not use acid cleaner to clean the faucet as it may cause surface corrosion of the faucet. If the faucet should be exposed to harmful acid substances, please rinse it with water immediately.