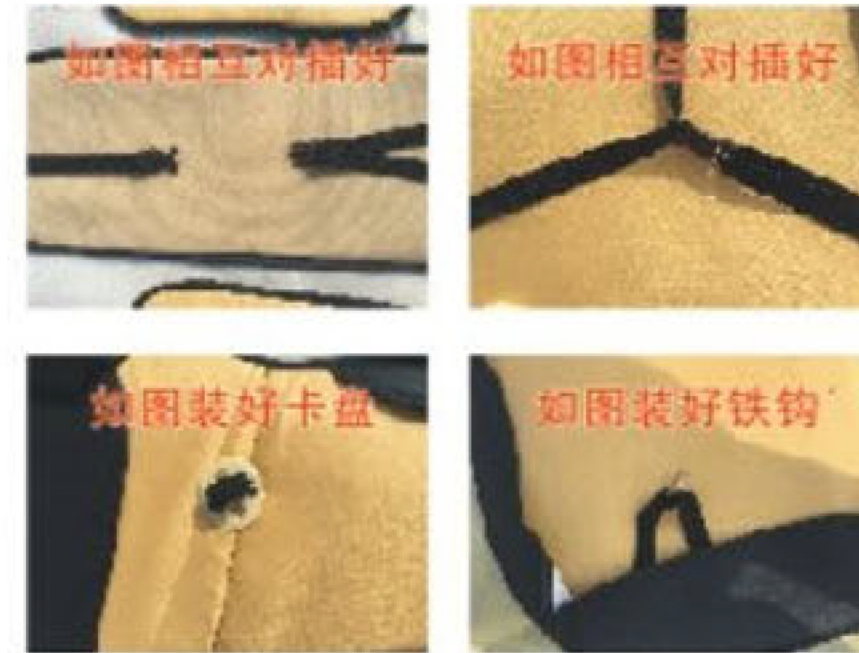


# GENERAL INSTALLATION GUIDE

**step 1: install the chuck and hook to the cushion**



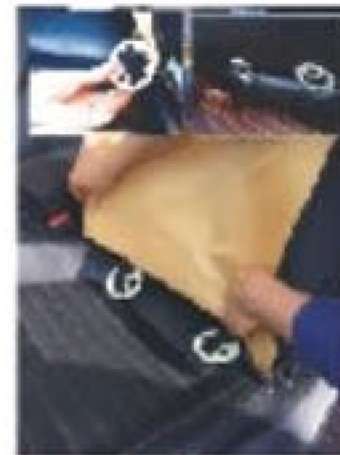
**step 2: start installation from the front**



**1. put on the front cushion**



**2. zip up**



**3. insert the chuck into seat gap**



**4. fix the hook under the seat**



**5. put on the head hat**

**step 3: start install the back seat cushion**



**6. lay the rear base**



**7. flip up the bottom of the seat**



**8. as show of the figure, fasten the buckle**



**9. attach the backrest on both sides**



**10. attach the middle armrest pad**



**11. put on the head hat, plug in the button**



**12. the backrest is finished**



**13. the rear cushion is finished**