







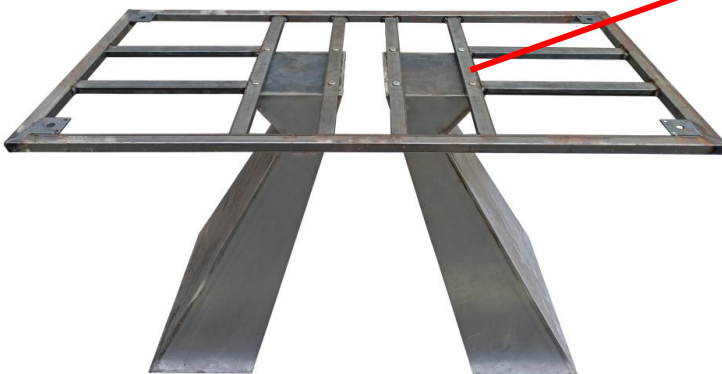


Installation

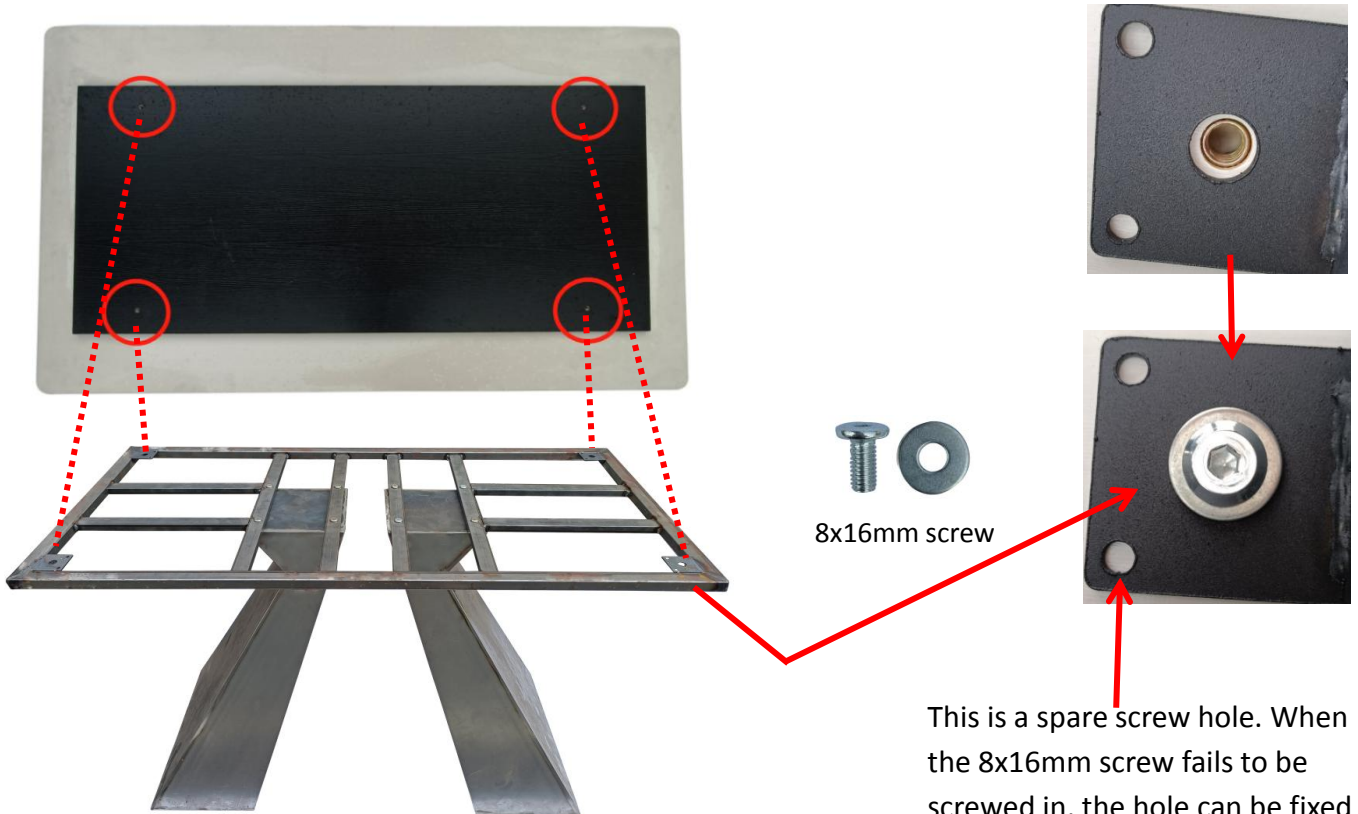
Hardware List		Hardware List	
 Table top	1	 Table leg	1
 Support frame	1	 8x16mm screws	4
 8x23mm screws	8	 Washers	12
 spare 4x15mm Self-tapping screws	8	 Hexagonal screw tap	1

1



Place it as shown in figure 1, align the screw holes with 8x23mm screws and nuts and fasten them.

2



Adjustable foot pads at the bottom of the support legs (when the ground is uneven, the foot pads can be used to adjust the balance)

This is a spare screw hole. When the 8x16mm screw fails to be screwed in, the hole can be fixed with a 4x15mm self-tapping screw. Either way will do.

Put the table top on the table leg, make sure the reserved screw holes of the table top and the frame are corresponding, tighten 8x16mm screws from the bottom to finish the installation.

