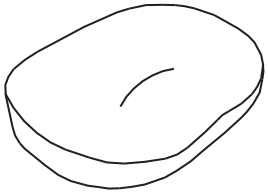


ASSEMBLY INSTRUCTIONS

Parts and Hardware

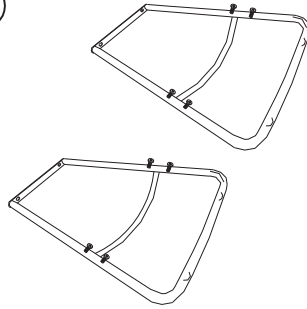
Please check to make sure you have all parts and hardware before starting assembly process.

(A)



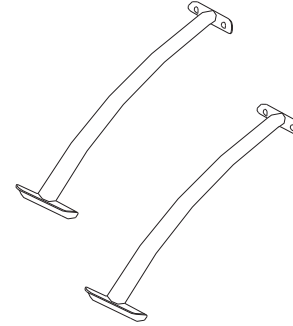
Seat 1pc

(B)



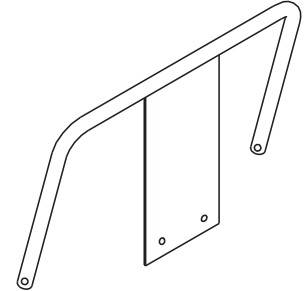
Legs 2pcs

(C)



Connecting Rub: 2pcs

(D)



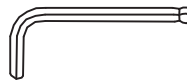
Back 1pc

①



Bolts 8pcs

②



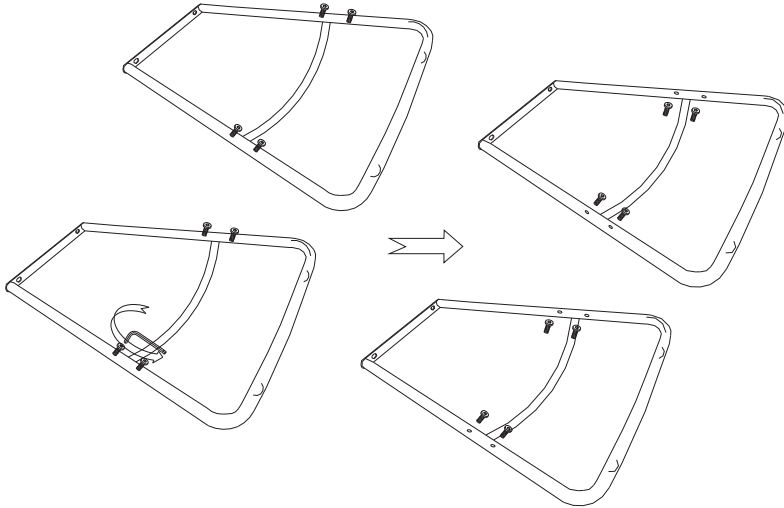
Wrench 1pc

ASSEMBLY INSTRUCTIONS

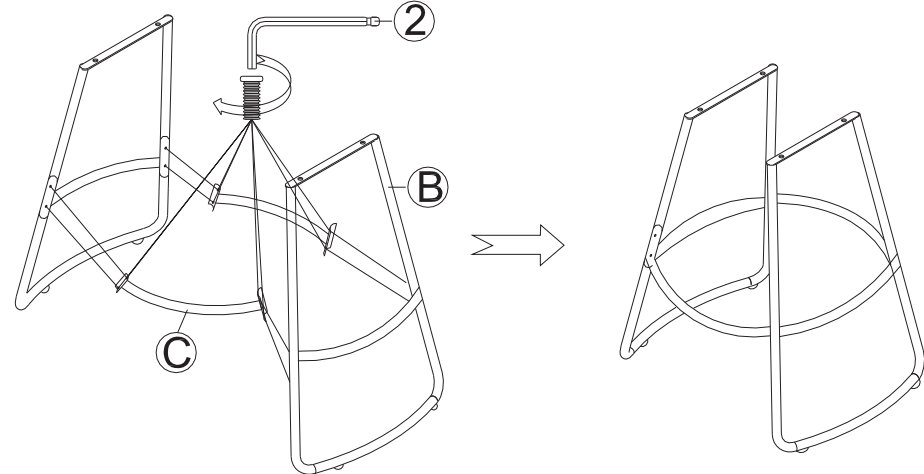
Assembly Instructions

Please read and understand all assembly instructions before beginning assembly process.
Do not tighten any single bolt until all bolts in holes on each step

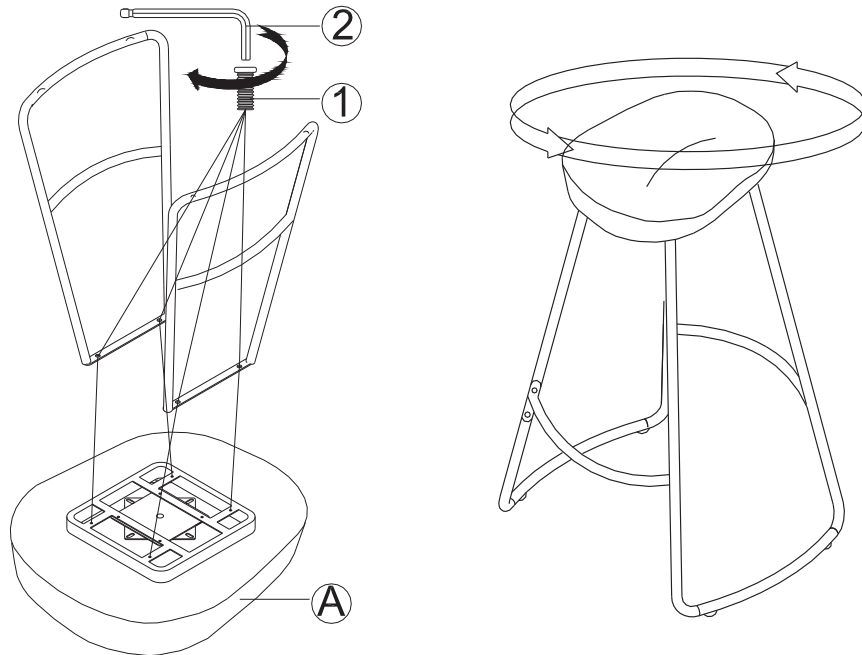
STEP 1: Remove the bolts from legs.



STEP 2: Use the bolts remove from the legs to connect the legs and connecting rub.



STEP 3: Use the bolts ① to connect the legs and seat.



STEP 4: Connect the back to seat use bolts ①.

