

**Read the instructions for use carefully  
and keep them safe.**

- Do not place the device under any mechanical stress.
  - Please handle the device carefully. Jolts, impacts or falls, even from a low height, can damage the device.
  - Do not expose the device to direct sunlight, heat sources, excessive humidity or corrosive environments.
  - Never submerge the device in water or any kind of fluid
  - Do not use the device if it has fallen into water or any kind of fluid.
  - Do not use the device if there are visible signs of damage.
  - Do not use the device in the shower.
  - Never fill the refill tank with flammable liquids or aggressive chemicals.
- 
- Make sure the battery compartment is closed securely.
  - Only use AA Alkaline batteries.
  - Rechargeable AA batteries can be used in this device.
  - Only use a set of 4 of the same brand of AA Alkaline batteries and do not mix.
  - Do not mix old and new batteries.
  - Correctly insert (polarity) batteries into the battery compartment
  - Replace the full set of 4 AA Alkaline batteries at any one time.
  - To prevent battery leakage, remove batteries from the appliance if it is not used for a long period of time.

***The device is specially designed for  
foaming hand soap.***

***user -friendly, Luxurious foam. If using normal liquid,  
it needs to mix with water, stir it evenly and then it works.***



**Contact Us**  
54 HWY 12, Flemington  
NJ 08822 USA 1-866-802-9366  
[www.wbminternational.com](http://www.wbminternational.com)



BOOK MARK US



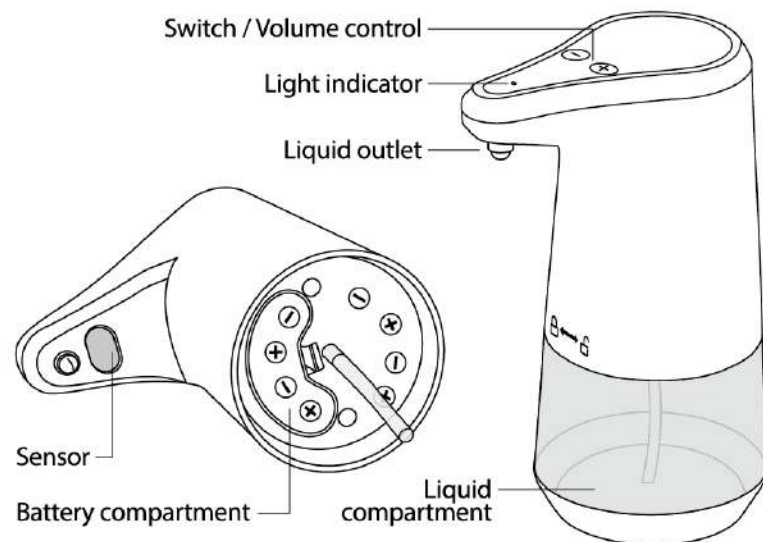
# TOUCHLESS FOAMING SOAP DISPENSER

## User Manual



# TOUCHLESS FOAMING SOAP DISPENSER

Item NO. SOD-02



\* 4 AA batteries required (not included)

## Suitable liquid for the machine

How to judge whether the liquid is suitable for using or not?  
Please add proper amount of water into the liquid, scrub your hands, you can use it when occurring bubbles and without other impurities. Granular liquid or liquid with other impurities are forbidden to use which will make the machine breakdown.

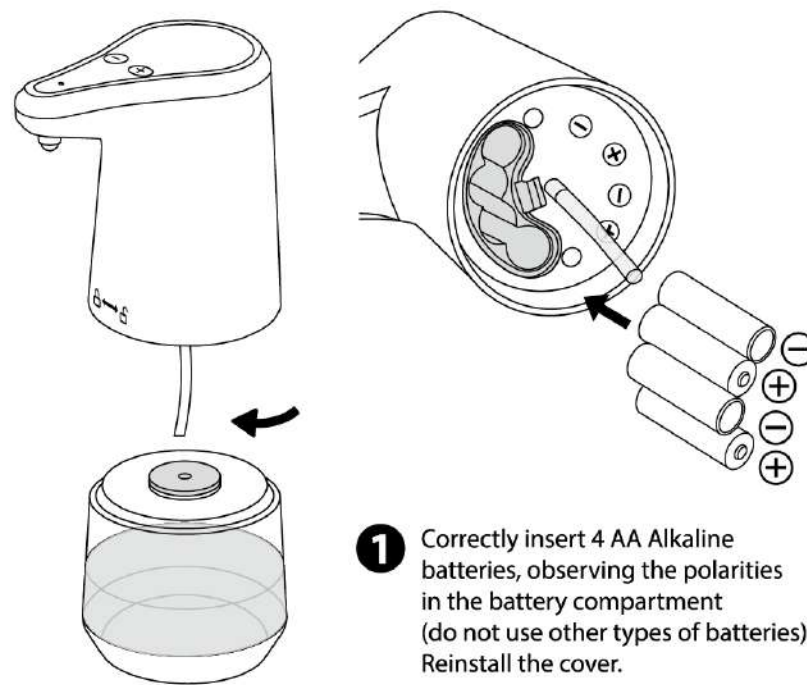
## Using method

Firstly pour the foam hand soap liquid into the machine, according to the liquid viscosity to add water at the ratio of 2-3 times, stir it evenly and then it works.

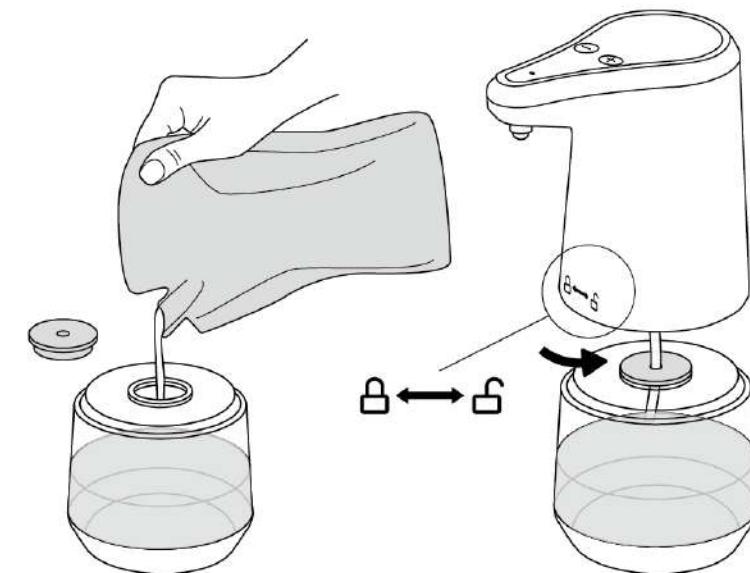
No shaking. Add more water at first, dilute your favorite liquid soap with water and turn it into Luxurious foam.

## Attention:

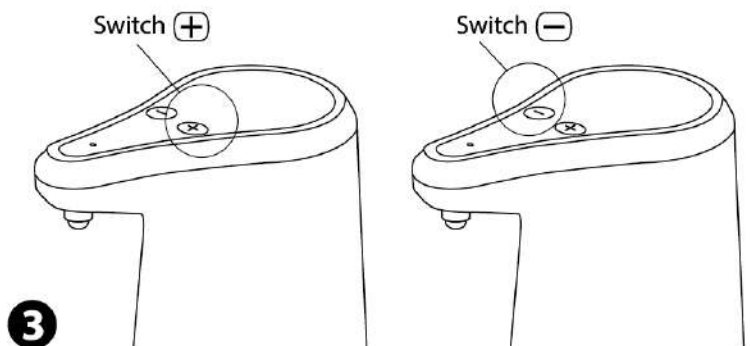
- Don't block off the spray mouth with hand or non self.
- Don't upside down the machine when it has liquid soap inside.
- When replace liquid soap, pay attention to avoid the sundries inside the bottle and prevent sundries to blocking off the machine.
- Please add the liquid soap timely when it is about to run out. If the machine stops the movement over 15days, dump the inside liquid soap, and refill water to clean the machine 10-20 times to avoid blocking up.
- When cleaning the machine, please use the wet towel to wipe the surface. Do not immerse the machine into the water or wash it directly so as to avoid short-circuit phenomenon.
- When the battery is about to run out, the breathing light will turn red to indicate that you need to replace the batteries.
- Do not need to power off the machine. It enters standby state when it does not work.



- 1 Correctly insert 4 AA Alkaline batteries, observing the polarities in the battery compartment (do not use other types of batteries). Reinstall the cover.



- 2 Pouring desired amount of liquid into the tank. Rotate it gently in clockwise direction.



- 3
  - Switch the device ON by pressing (+) button for 1 second and LED indicate green.
  - There are 2 levels of soap foam volume which press (+) or (-) button once for a level.
  - Long press (-) button for 3 seconds to off the device, LED indicate red.
  - When the battery is about to run out, the indicator light will turn red to warn you to replace the batteries.
  - Normally no need to power off the device, it enters standby state when it does not work.