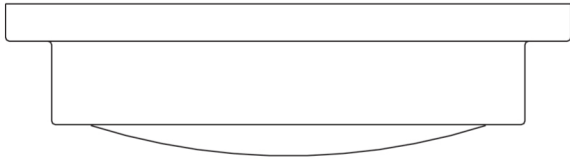


LED FLUSH MOUNT
INSTALLATION INSTRUCTIONS
NO. MRLCL00614A20CBN/MB/MW



Please read carefully and save these instructions, as you may need them at a later date.

CAUTION

Turn off the main power at the circuit breaker before installing the fixture, in order to prevent possible shock.

GENERAL

All electrical connections must be in accordance with local and National Electrical Code (N.E.C.) standards. If you are unfamiliar with proper electrical wiring connections obtain the services of a qualified electrician.

Remove the fixture and the mounting package from the box and make sure that no parts are missing by referencing the illustrations on the installation instructions.

Care and Cleaning

Do not use any cleaners with chemicals, solvents, or harsh abrasives. Use only a dry, soft cloth to dust or wipe carefully. To clean the fixture, disconnect power by turning off the circuit breaker or by removing the fuse at the fuse box, and use a dry or slightly dampened, clean cloth to wipe the exterior surface of the fixture.

Trouble Shooting

Problem	Possible Cause	Solution
The LED will not light.	The LED is burned out.	Discontinue the use of the lamp.
	The power is off.	Ensure the power supply is turned on.
	There is a faulty switch.	Test or replace the switch.
	There is a faulty wire connection.	Check the wiring.
The fuse blows, or the circuit breaker trips, when the light is turned on.	There are crossed wires, or the power wire is grounding out.	Discontinue use of the lamp. Check the wire connections. Contact a qualified electrician or call the Customer Care Service Team at 1-800-986-3460.

Pre-installation

TOOLS REQUIRED



Phillips
Screwdriver



Flathead
Screwdriver



Wire
Cutters



Wire
Stripper



Ladder



Electrical
Tape

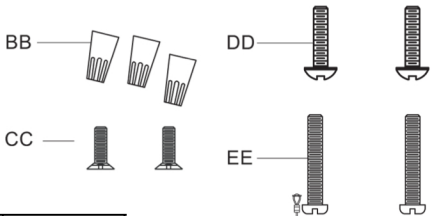


Safety
Goggles

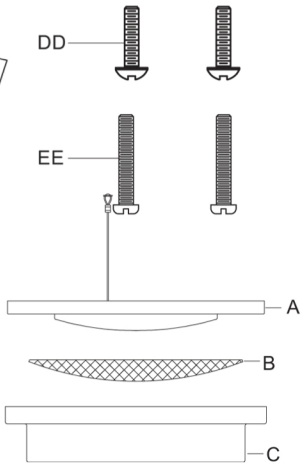
HARDWARE INCLUDED



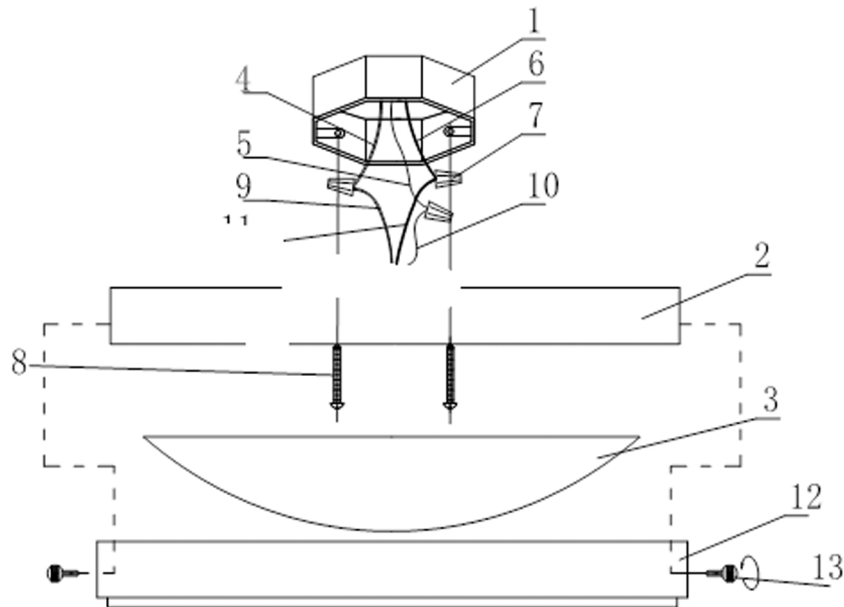
NOTE: Hardware not shown to actual size.



PART	DESCRIPTION	QUANTITY
BB	Wire Connector	3PCS
CC	Mounting Screw	2PCS
DD	Outlet Box Screw	2PCS
EE	Lock screw	2PCS
A	Fixture Body	1PC
B	Shade	1PC
C	Shade Holder	1PC



Installation



1. OUTLET BOX (EXCLUDED)

2. FIXTURE PAN

3. LENS

4. WHITE SUPPLY WIRE

5. BLACK SUPPLY WIRE

6. HOUSE GROUND WIRE

7. WIRE NUTS

8. FIXTURE SCREWS

9. WHITE FIXTURE WIRE

10. BLACK FIXTURE WIRE

11. FIXTURE GROUND WIRE

12. RING

13. CAP NUT

Installation

1. Pull the supply wires (4 & 5) and house ground wire (6) out from the outlet box (1).
2. Thread the fixture screws (8) into the appropriate threaded holes of the outlet box (1).
3. Electrical connections, connect the black fixture black wire (10) to the black supply wire (5) and the white fixture wire (9) to the white supply wire (4) using wire nut (7).
4. Connect the fixture ground wire (11) to the supply ground wire (6) together using wire nut (7). Wrap all wire connections with electrical tape to ensure secure connection.
5. Carefully tuck all wires back into the outlet box. Place the fixture pan (2) over outlet box and feed fixture screws (8) through keyhole slots. Rotate the fixture pan (2) clockwise until screws (8) slid into the narrow end of the keyhole slots and tighten firmly.
6. Final assembly- Attach the lens (3) and rotate clockwise in place securely.
7. Installation complete, restore power at the circuit breaker and turn light switch on to activate this fixture.
8. This is integrated led fixture, no bulbs to replace.