



ASSEMBLY INSTRUCTIONS

Description: CONNOR COUNTER STOOL

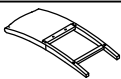
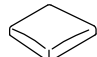


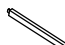
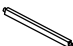
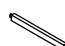
Important safety instructions:

- Please read carefully all instructions before assembly.
- For your safety and ease, assembly by two or more adults is recommended.
- Keep instructions for future use.







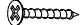
Pre-assembly:

- Do not discard any content until assembly is complete to avoid accidentally discarding small parts or hardware.
- Take out all parts and hardware from box.

Parts List

Item	Description		QTY
P1	Chair Back		1
P2	Seat Frame		1
P3	Left Front Leg		1
P4	Right Front Leg		1
P5	Left Side Stretcher		1
P6	Right Side Stretcher		1
P7	Front Stretcher		1

Hardware List

Item	Description		QTY
H1	Bolts 1/4" x 1-1/2"		2
H2	Bolts 1/4" x 2"		4
H3	Bolts 1/4" x 3"		4
H4	Lock Washers 1/4"		10
H5	Flat Washers 1/4"		10
H6	Allen Key		1
H7	Screws M4 x 1-1/2"		6

DISCLAIMER:

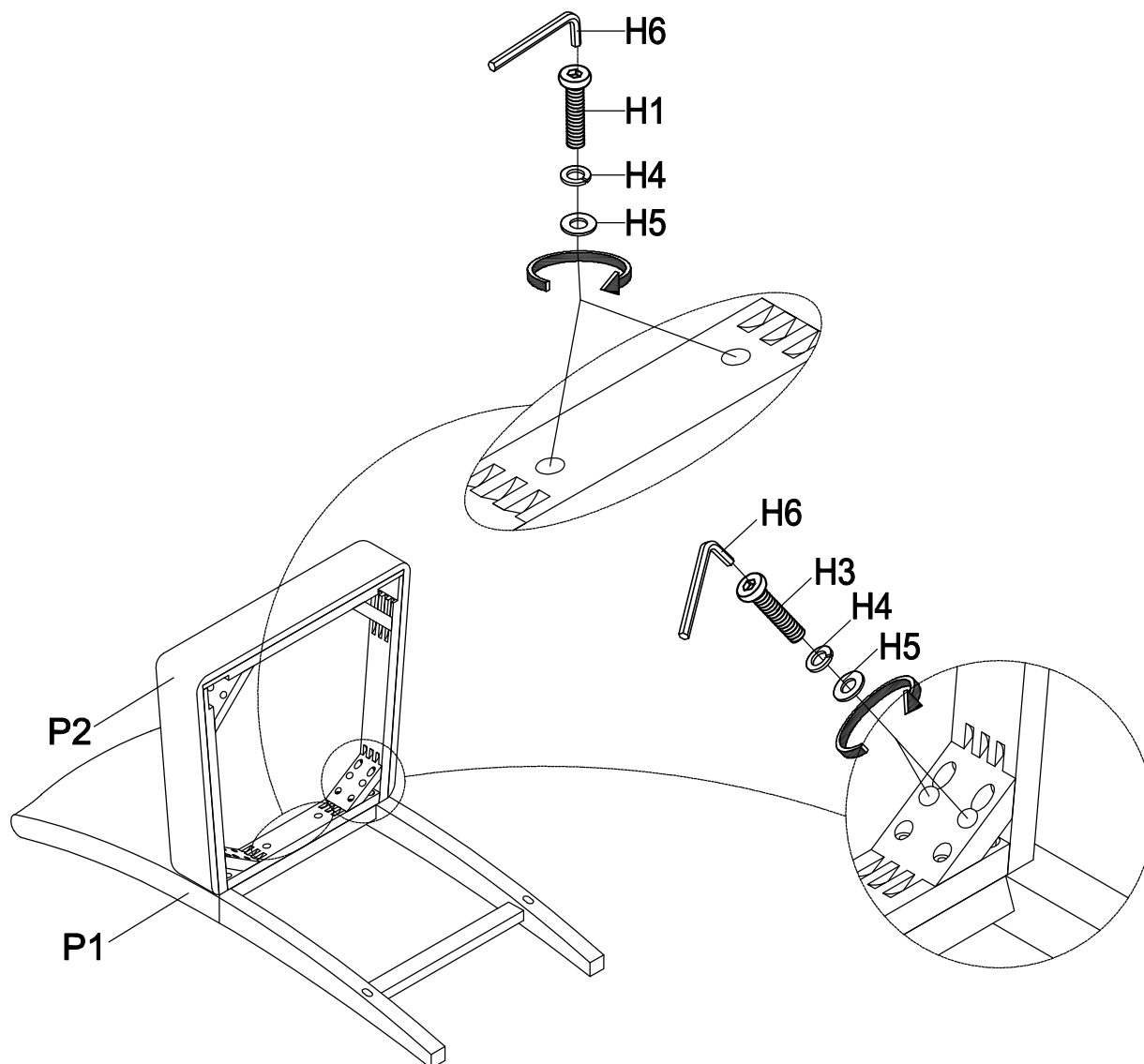
WHEN PROPERLY ASSEMBLED, THIS ITEM IS SAFE FOR INTENDED USE. SELLER IS NOT LIABLE FOR ANY DAMAGES RESULTING FROM ITEM BEING IMPROPERLY ASSEMBLED AFTER PURCHASE.

Assembly Procedures:

*Assemble the Chair on a flat, soft surface such as a carpet or cloth to prevent scratching the finish.

Step 1: Attach the Seat Frame (P2) to the Chair Back (P1) as shown below.

- | | | |
|--------|---------------------|---|
| (H1)x2 | Bolts 1/4" x 1-1/2" |  |
| (H3)x4 | Bolts 1/4" x 3" |  |
| (H4)x6 | Lock Washers 1/4" |  |
| (H5)x6 | Flat Washers 1/4" |  |
| (H6)x1 | Allen Key |  |



Step 2: Attach the Front Legs (P3 & P4) to the Seat Frame (P2) as shown below and do not tighten Bolts.
Attach the Side Stretchers (P5 & P6) and Front Stretcher (P7) to Legs (P3 & P4) as shown below , at first tighten all screws and then tighten all bolts.

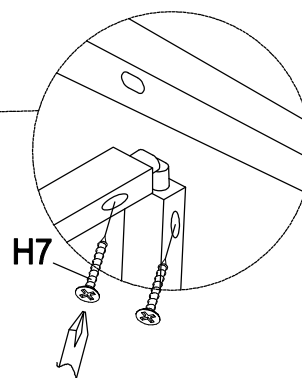
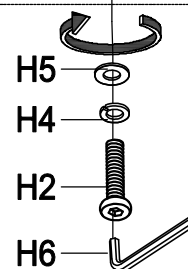
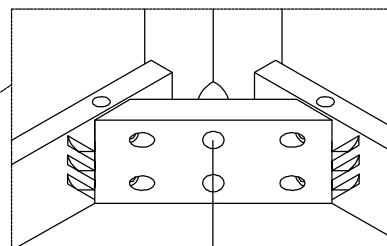
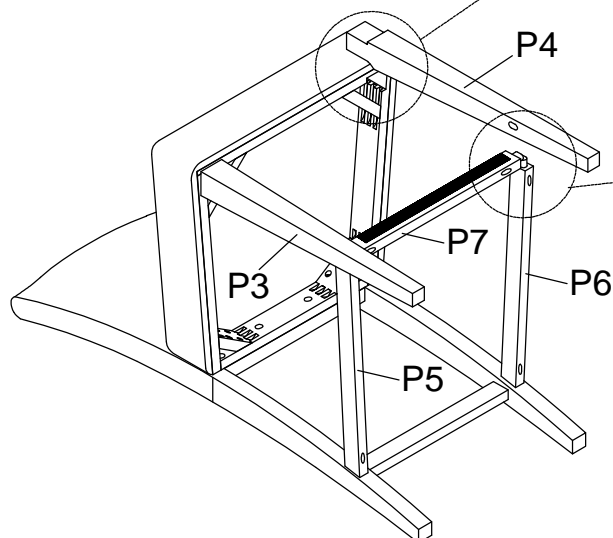
(H2)x4 Bolts 1/4" x 2"

(H4)x4 Lock Washers 1/4"

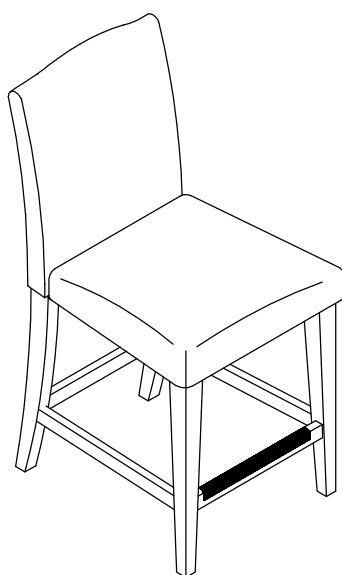
(H5)x4 Flat Washers 1/4"

(H6)x1 Allen Key

(H7)x6 Screws



Step 3: Turn the assembled chair to an upright position. Assembly is complete.



ADDITIONAL NOTE ABOUT SAFETY: BOLTS MAY LOOSEN DURING NORMAL EVERYDAY USE. THEY SHOULD BE PERIODICALLY INSPECTED AND RE-TIGHTENED TO PREVENT DAMAGE OR INJURY. ALWAYS CHECK TO ENSURE THAT ALL HARDWARE IS KEPT TIGHTENED.

Thank you for your purchase