

## DAY BED IN A BOX WOOD DAY BED WITH TRUNDLE

### INTRODUCTION

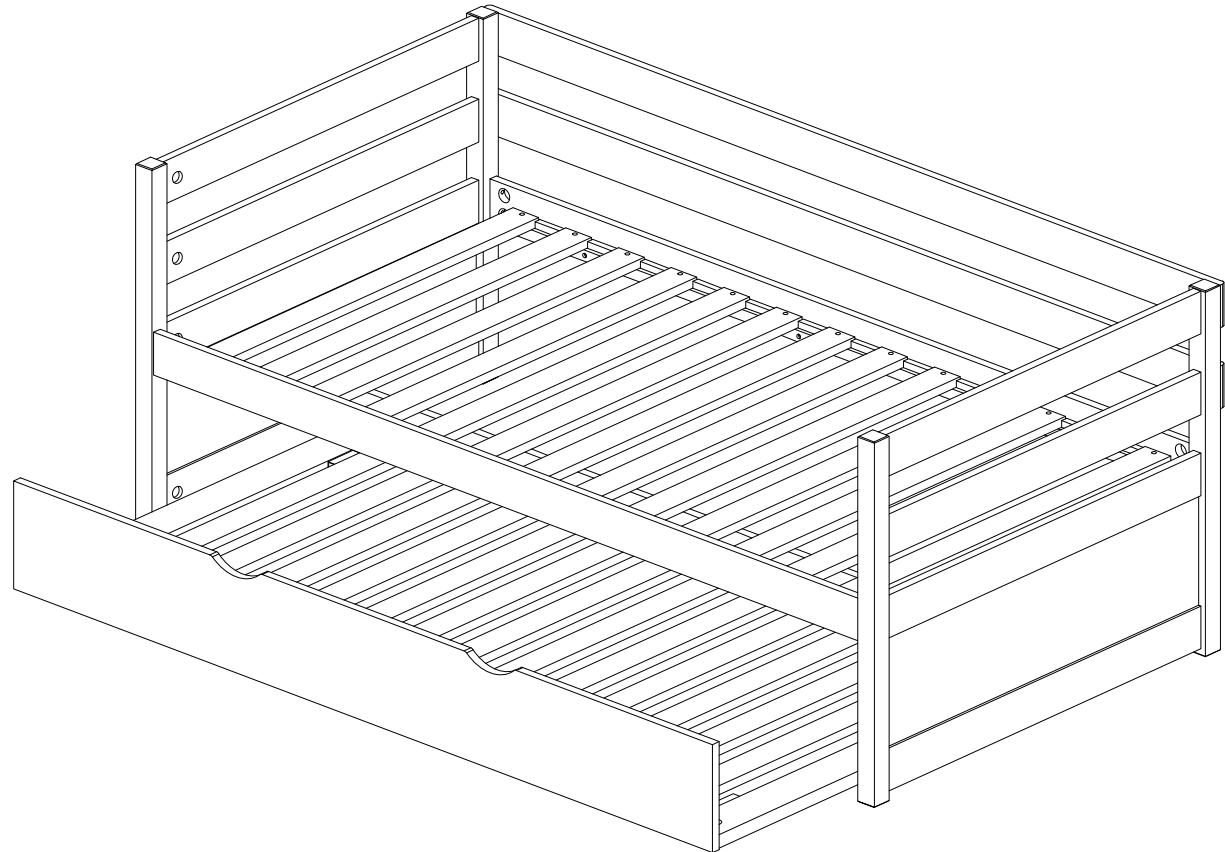
Enclosed please find simple step-by-step instructions to help you quickly assemble your product. Before you begin, we recommend that you follow the steps below.

1. Please read the instructions thoroughly
2. Identify all parts and hardware
3. Gather the tool(s) necessarily
4. 2 adults required for assembly

**To protect your parts** during assembly, please place them on a soft surface. To clean surface, use only water on a damp cloth. Do not use window cleaners or cleaning abrasives as it will scratch the surface and could damage the protective coating.

#### CUSTOMER SUPPORT

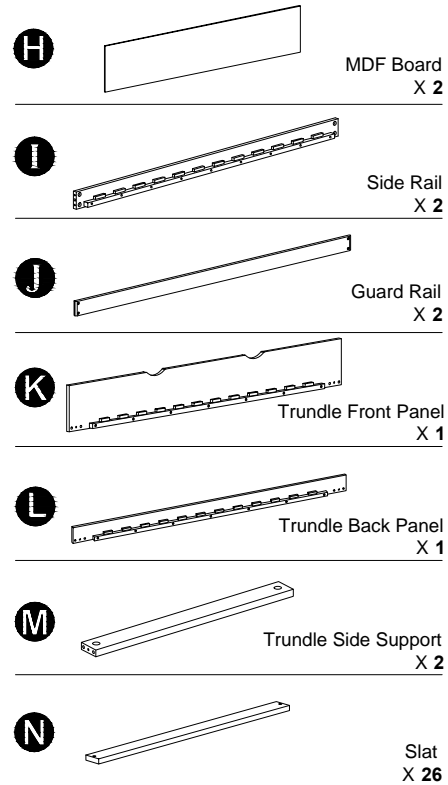
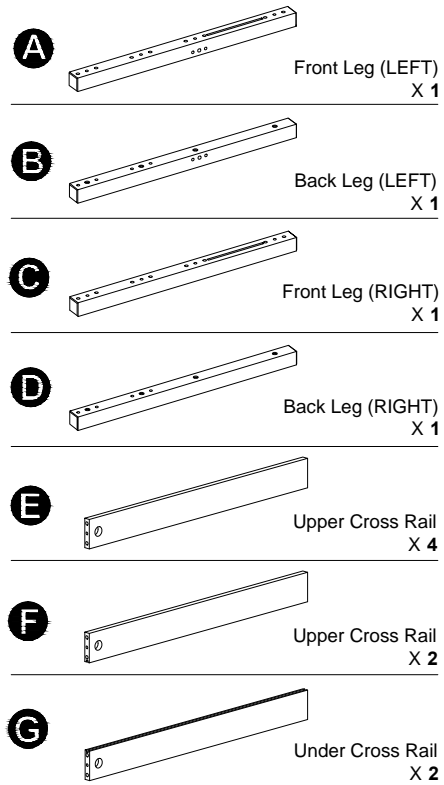
If you are missing parts or need assistance with your product, please contact the retailer from whom you purchased the product. When you call or email, please include the Product's Item Number and PO Number which is located on the Production Tracking Sticker. This sticker can be found on the bottom, inside or back of your product.



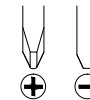
**Fully Assembled  
Day Bed With Trundle**

# PARTS LIST

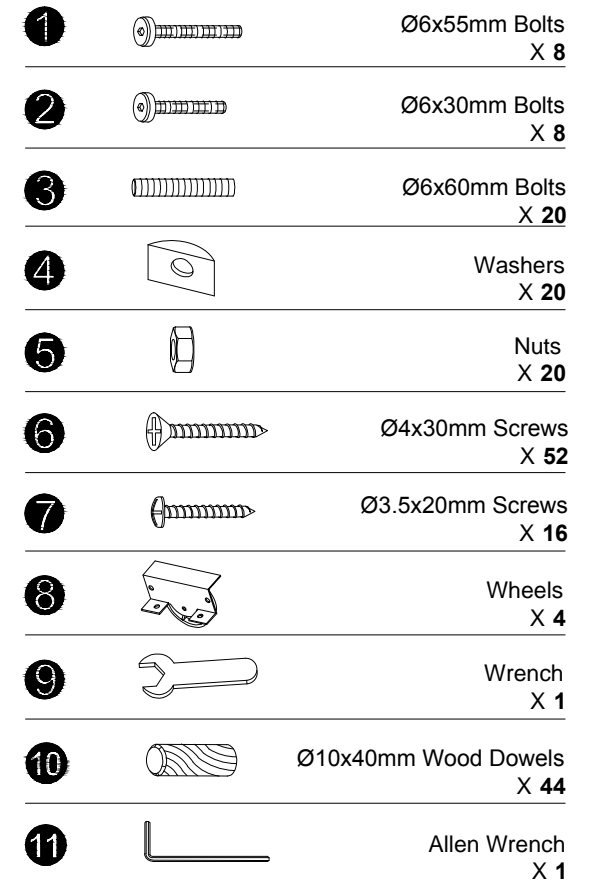
## PARTS IDENTIFICATION



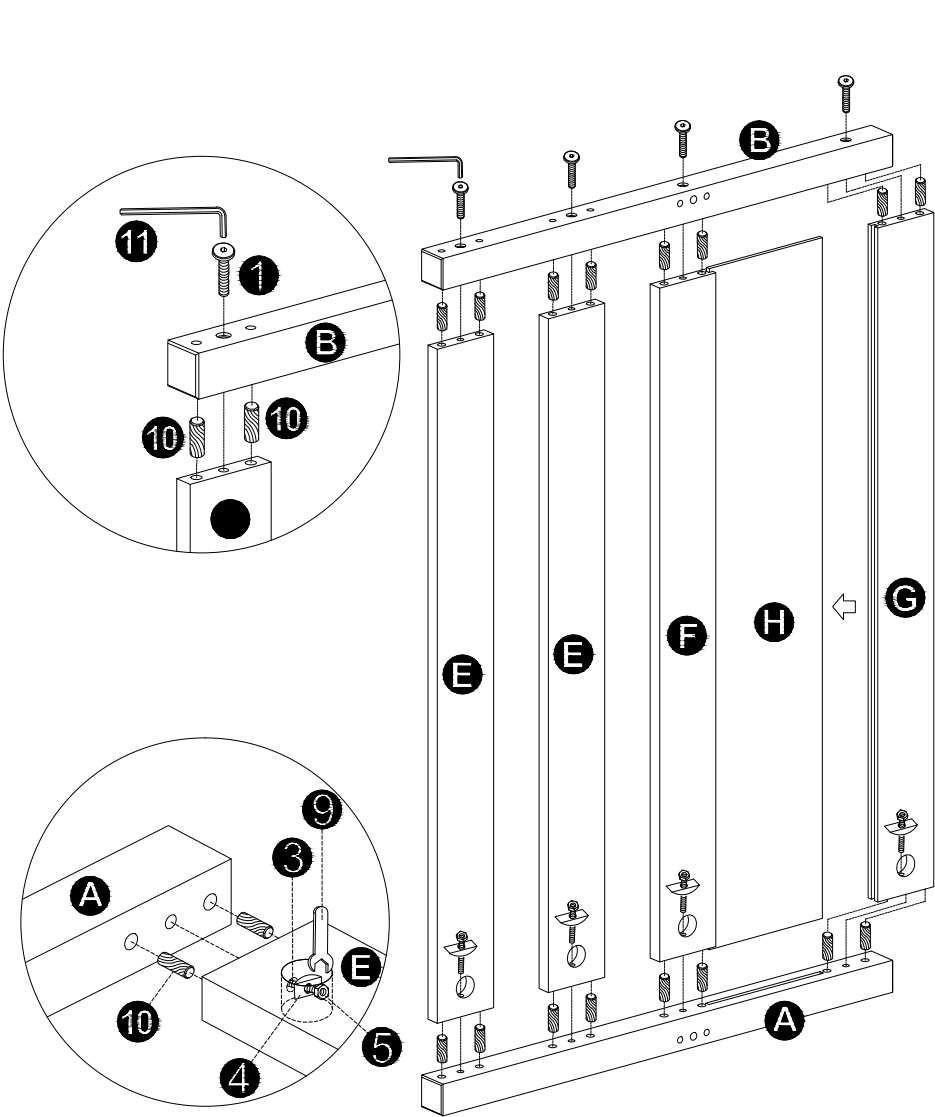
**Other Tools Required**  
(Not Included)  
• Phillips Screwdriver  
• Flathead Screwdriver



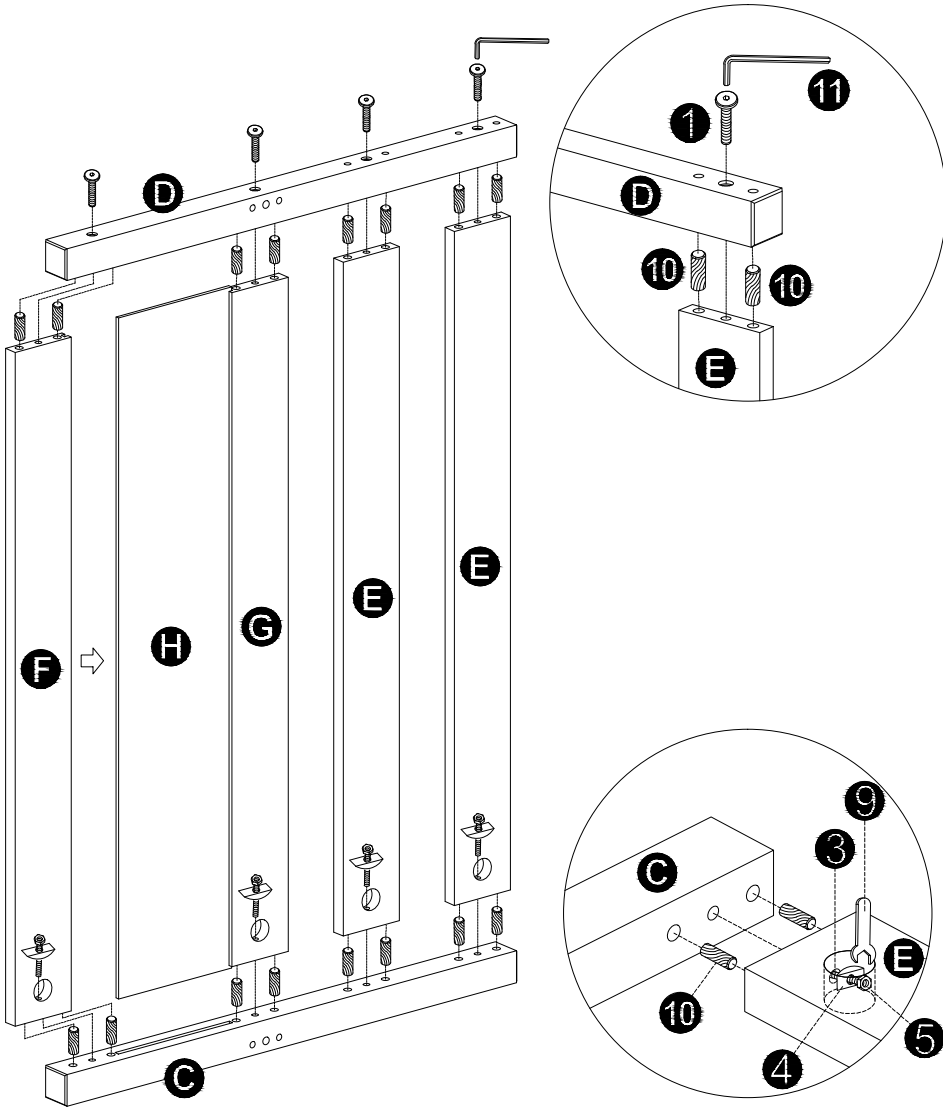
## HARDWARE FOR DAY BED



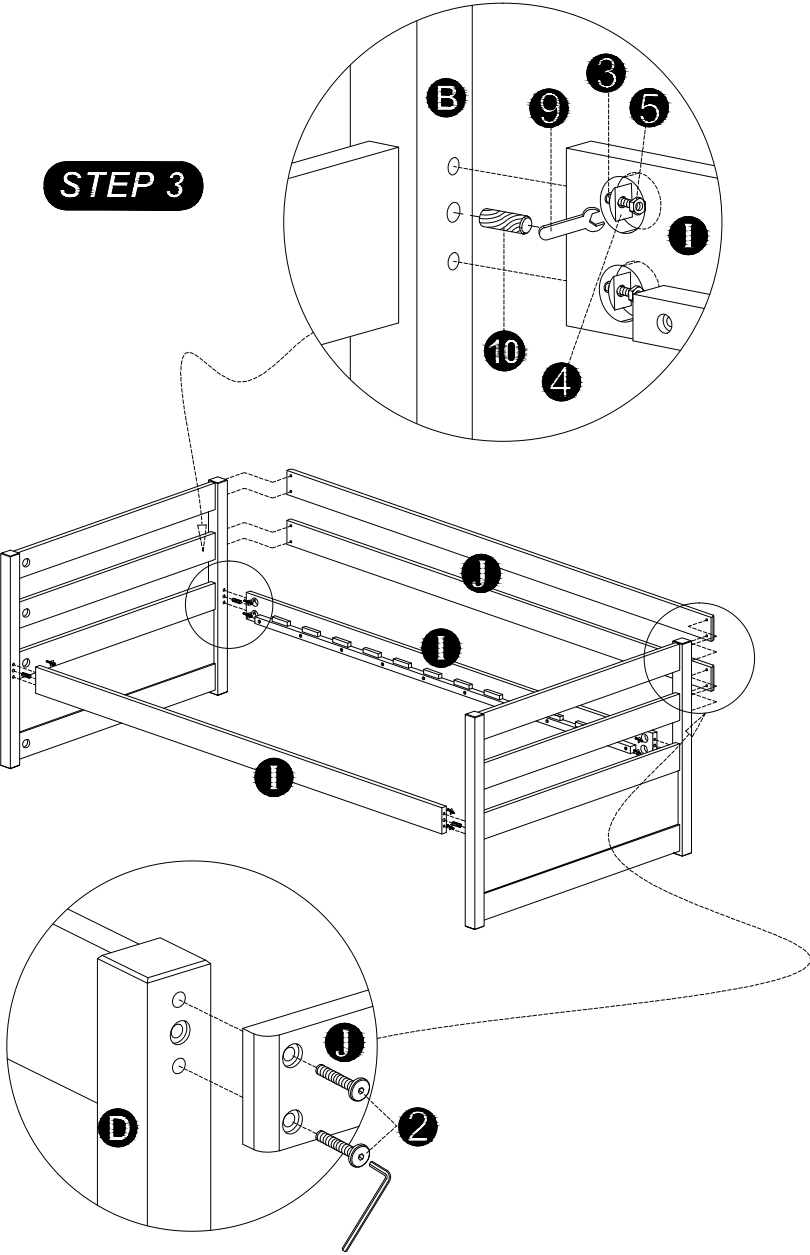
STEP 1



STEP 2



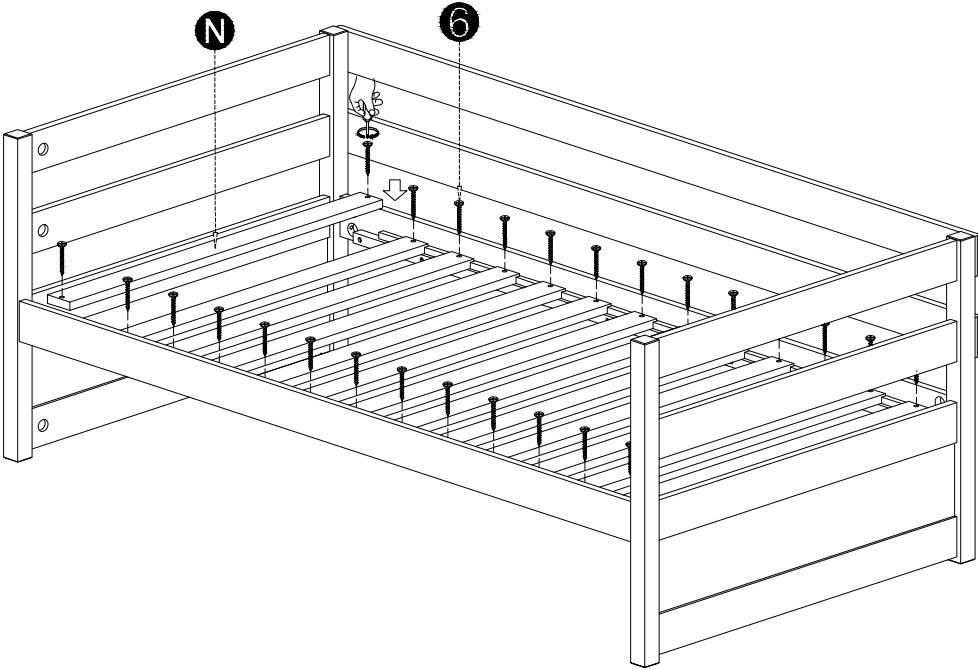
STEP 3



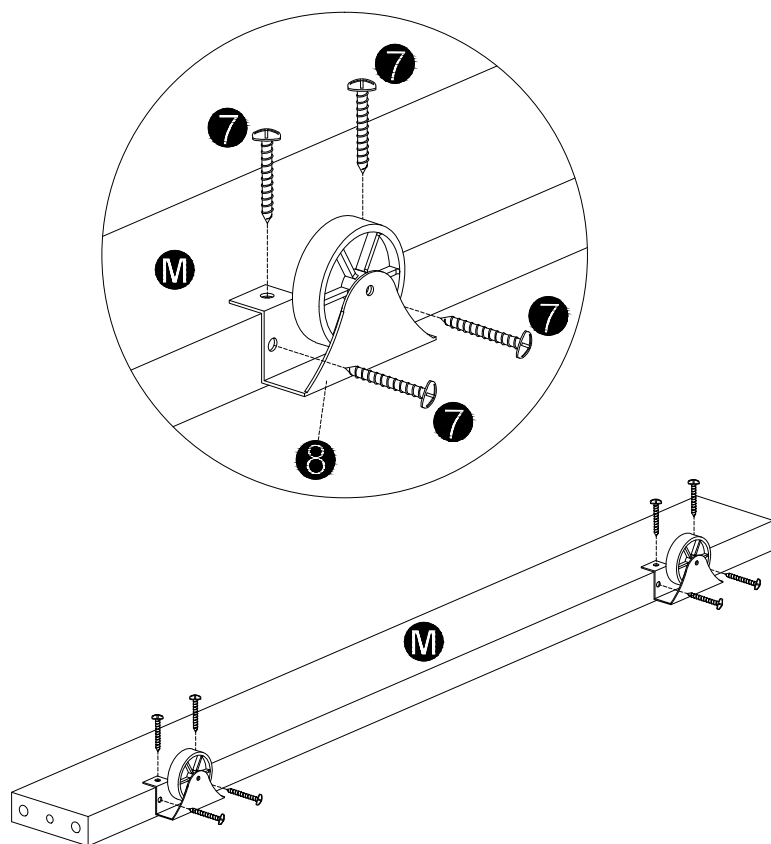
**WARNING**

To help prevent serious or fatal injuries **SCREW BOTH SIDES OF EACH SLAT TO THE SLAT ROLL SUPPORT**. Failure to do so could result in the collapse of the entire slat roll, *and will void your warranty.*

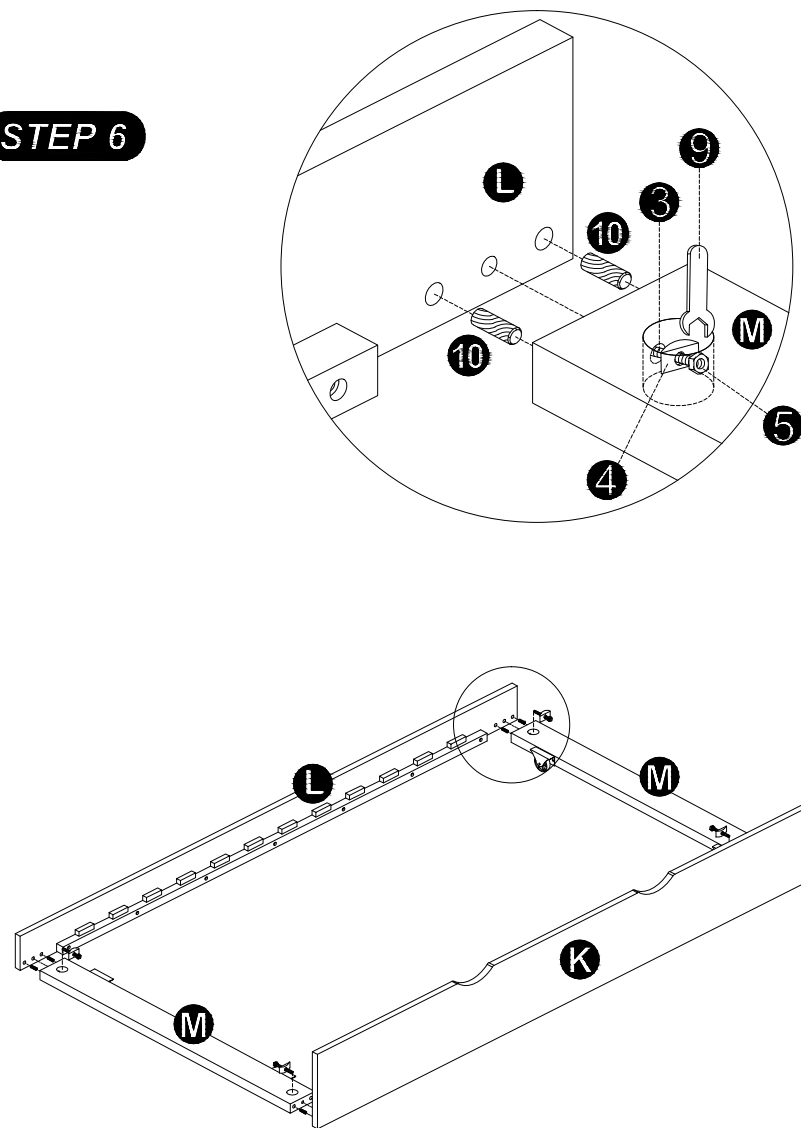
STEP 4



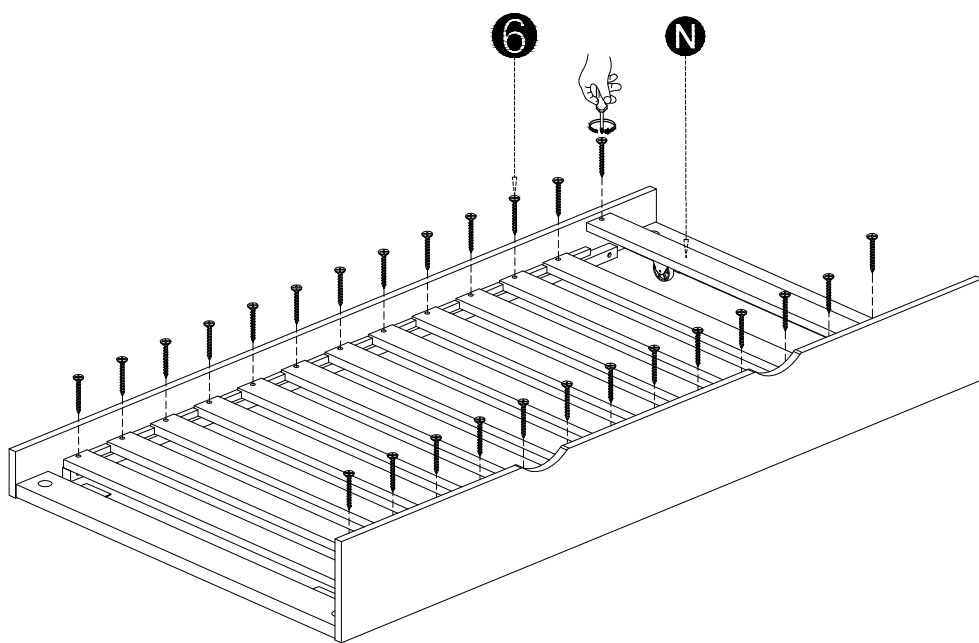
**STEP 5**



**STEP 6**



**STEP 7**



**Complete**

