

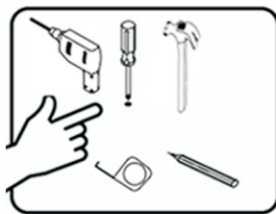
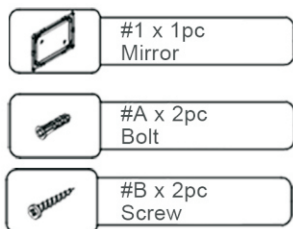
Safety Instructions



- ❗ Please read the instruction carefully before using.
- ❗ Before assembly compare the contents with list to make sure the package includes all the parts.
- ❗ Make sure the wall can bear the weight of the mirror.
- ❗ Do not use string or chain to hang the products.
- ❗ Please keep your property away during the installation to avoid any damage.
- ❗ Intended for residential use only.

Parts List

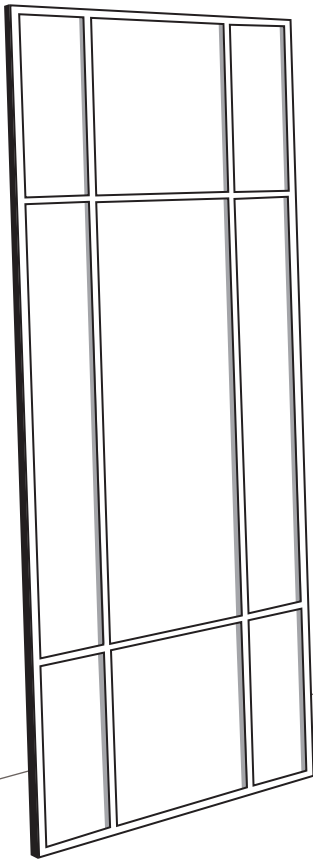
Tools Required (Not Provided)



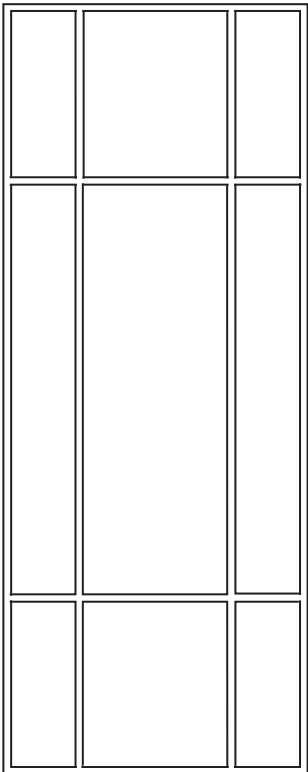
Care Advice

- Before using, wipe with a dry and clean cloth.
- Check all the screws and bolts are tight every three months or as needed.
- Clean with glass cleaner or detergent.

Windowpane Wall Mirror

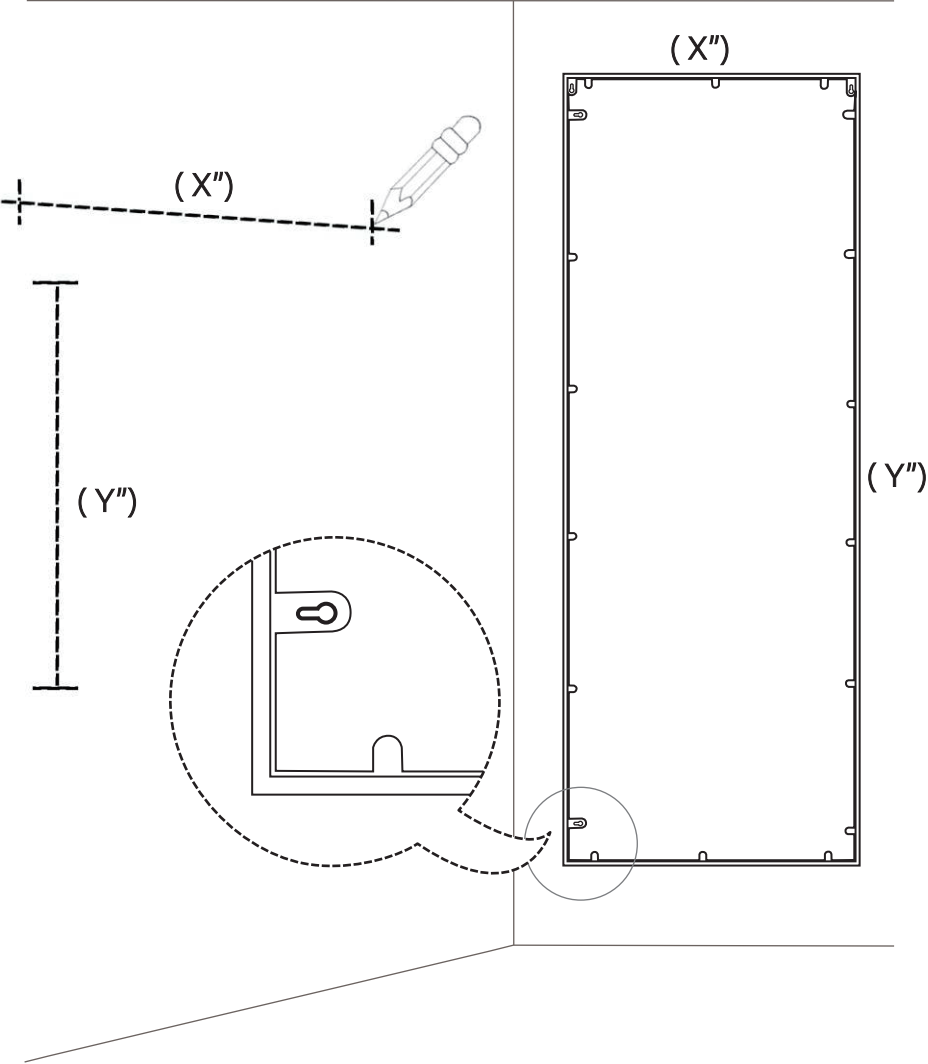


■ Leaning against Wall

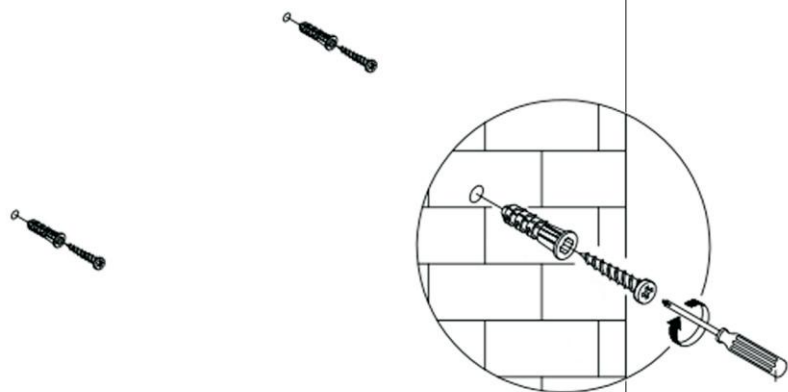


■ Wall Mounted

Windowpane Wall Mirror



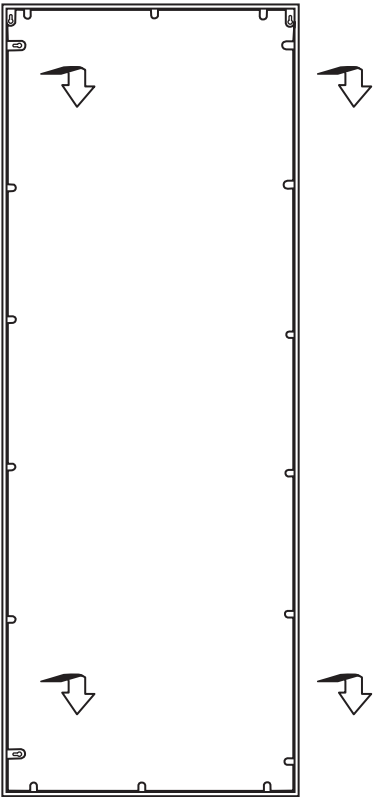
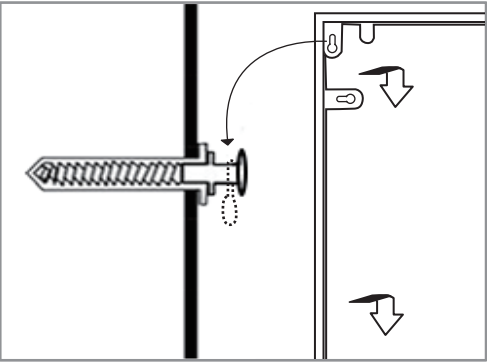
- Measure the distance between the mirror hooks and measure the same size on the wall.



Drill and place screws.

Windowpane Wall Mirror

⬇ x2 ⬇ x2



■ Hanging on the Wall