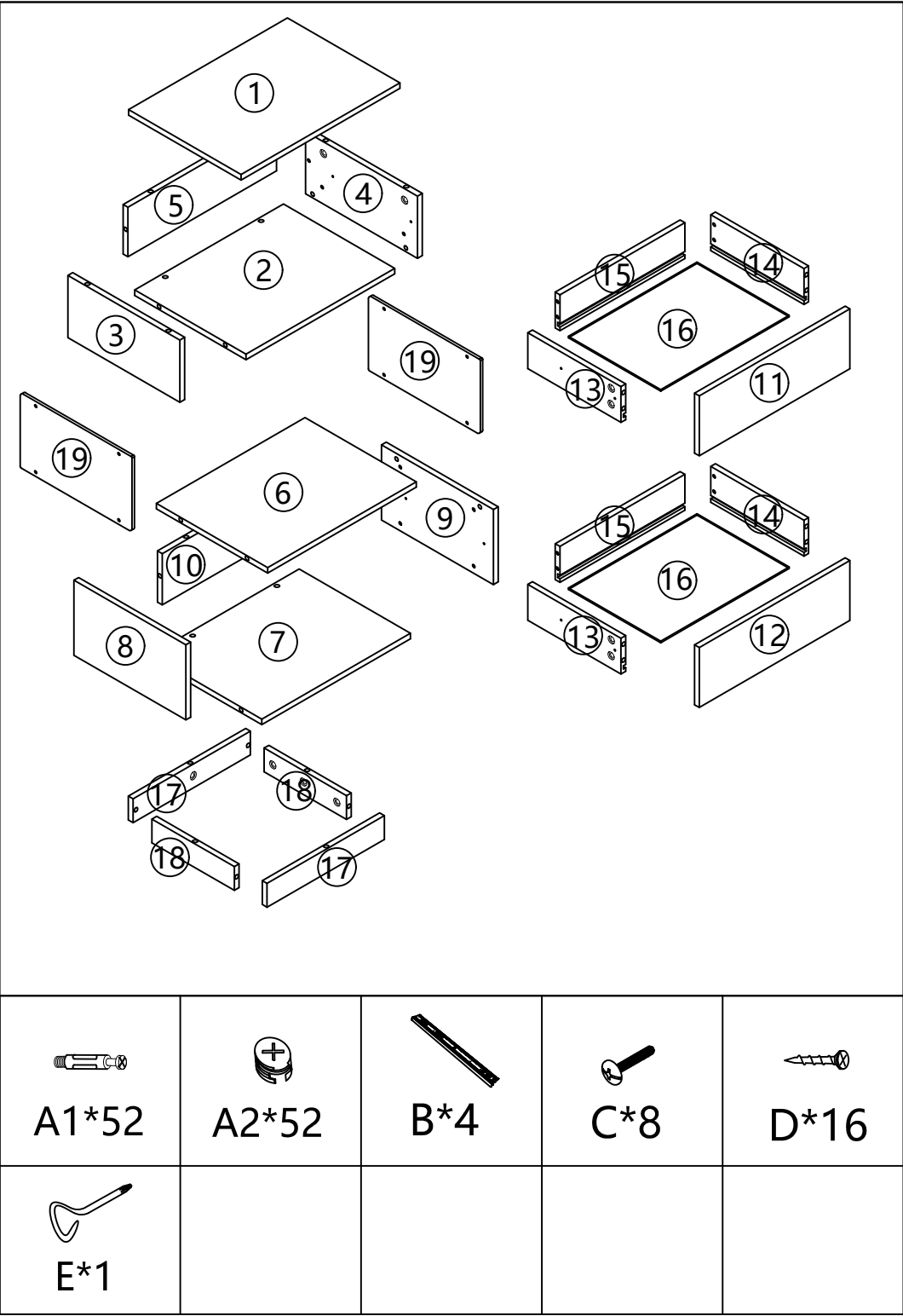
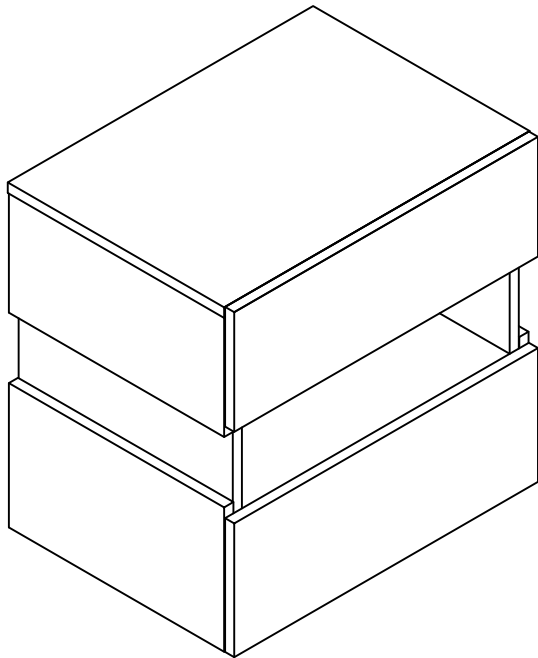


ASSEMBLY INSTRUCTION

- It would be best if you set aside and organize all pieces & corresponding "nuts/bolts" first.
- Please follow the instructions to assemble the items correctly.
- Could be assembled by one person ,but would recommend two.
- Please ensure the safety of the glass when assembling.
- Do not make the screws too loose or too tight.
- As shown in the figure, Insert the screw into the hole.
The arrow in the picture, Then rotate 90° or 180° clockwise.
- The remaining parts are spare parts.

SAFETY INFORMATION

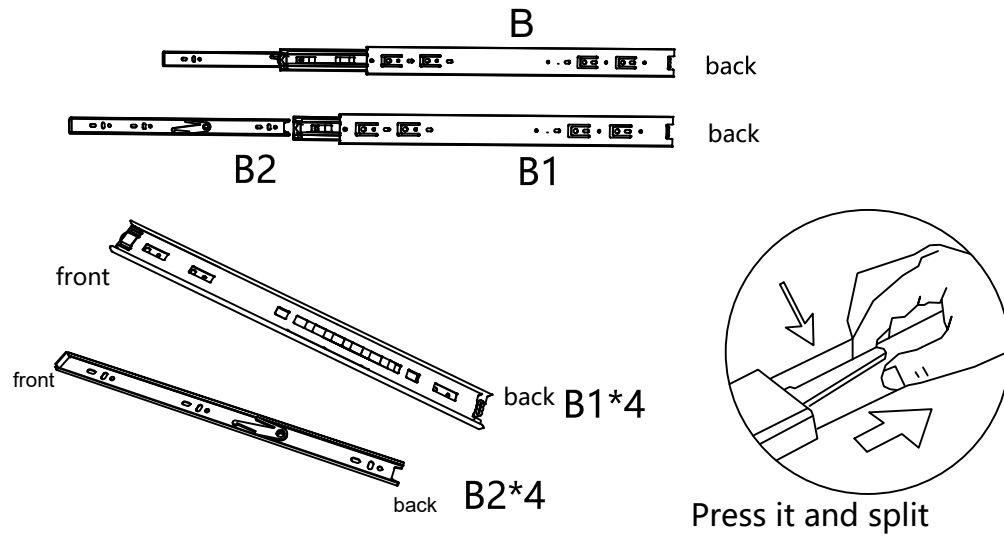
- The accessory bag contains some small accessories , which should be kept away from children.
- Kids are not allowed to climb or play with the product for safety reasons



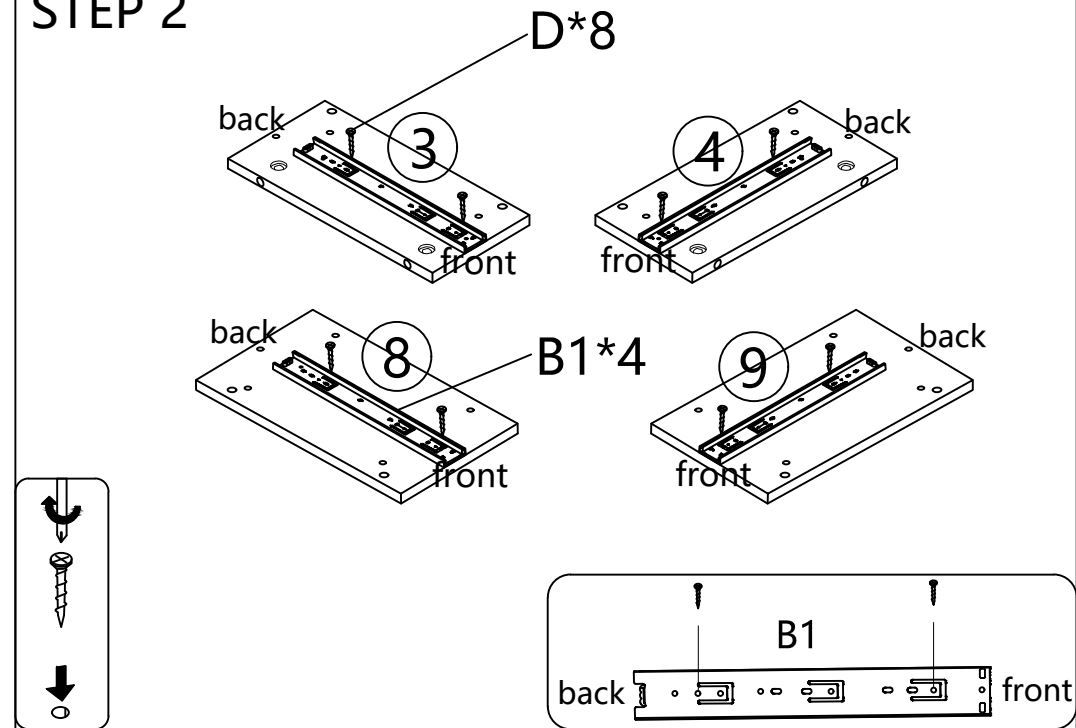
STEP 1

Warm Reminder:

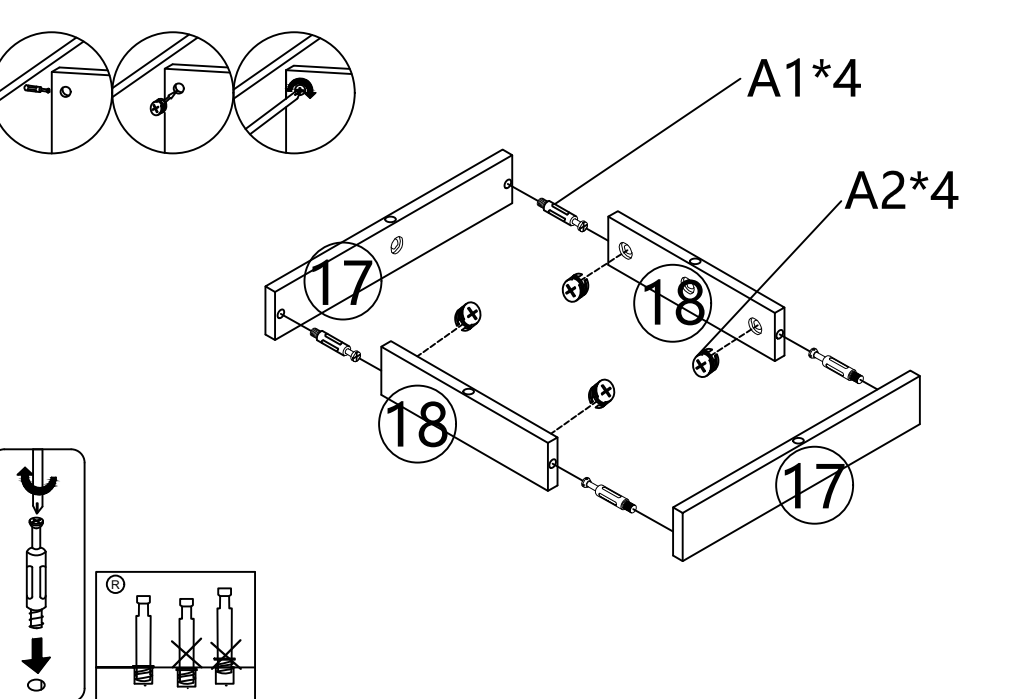
Before installing the drawer rail, you need to separate the B1 and B2 first.



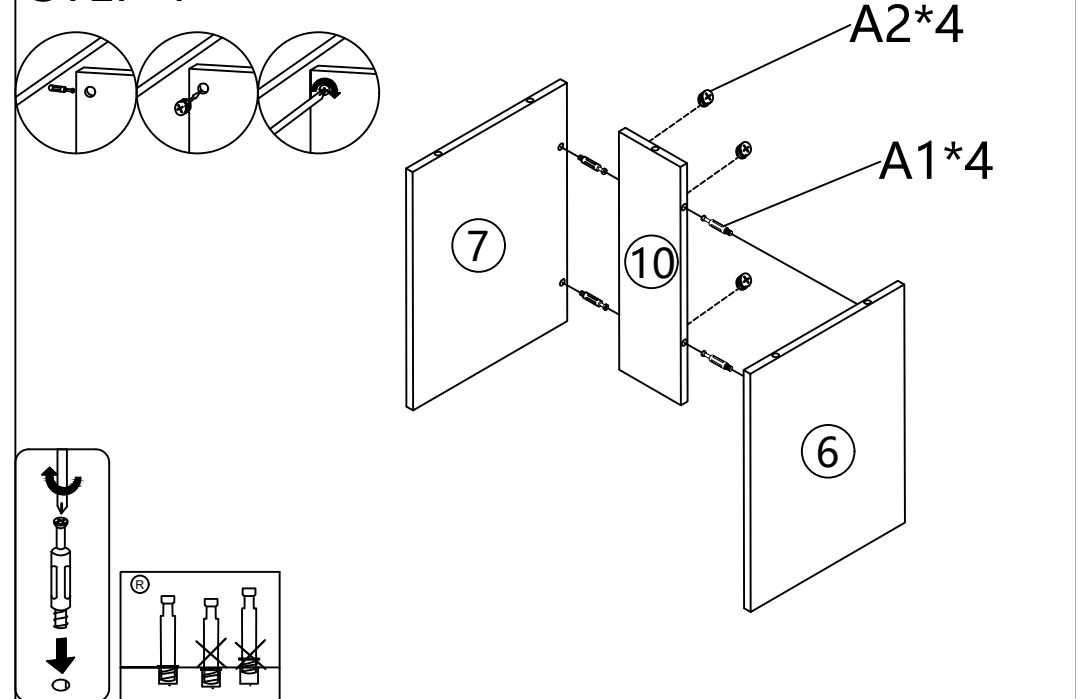
STEP 2



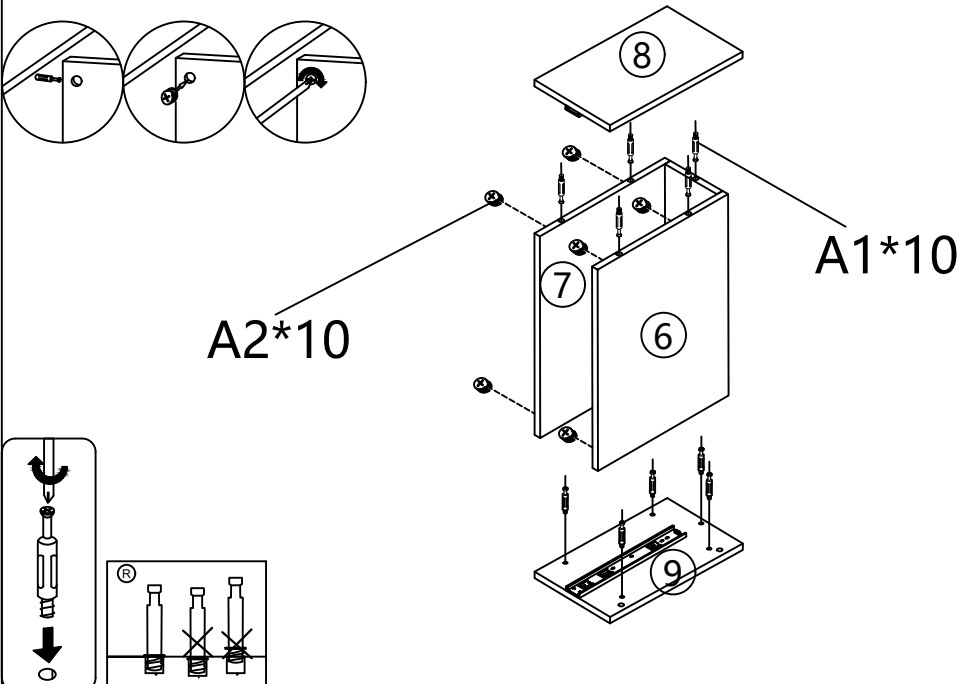
STEP 3



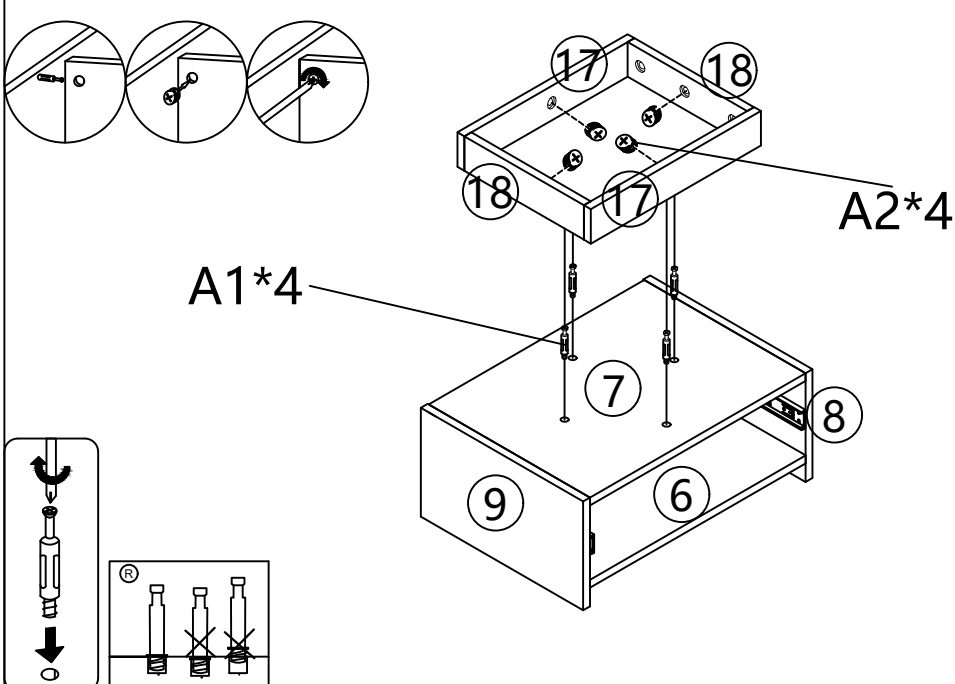
STEP 4



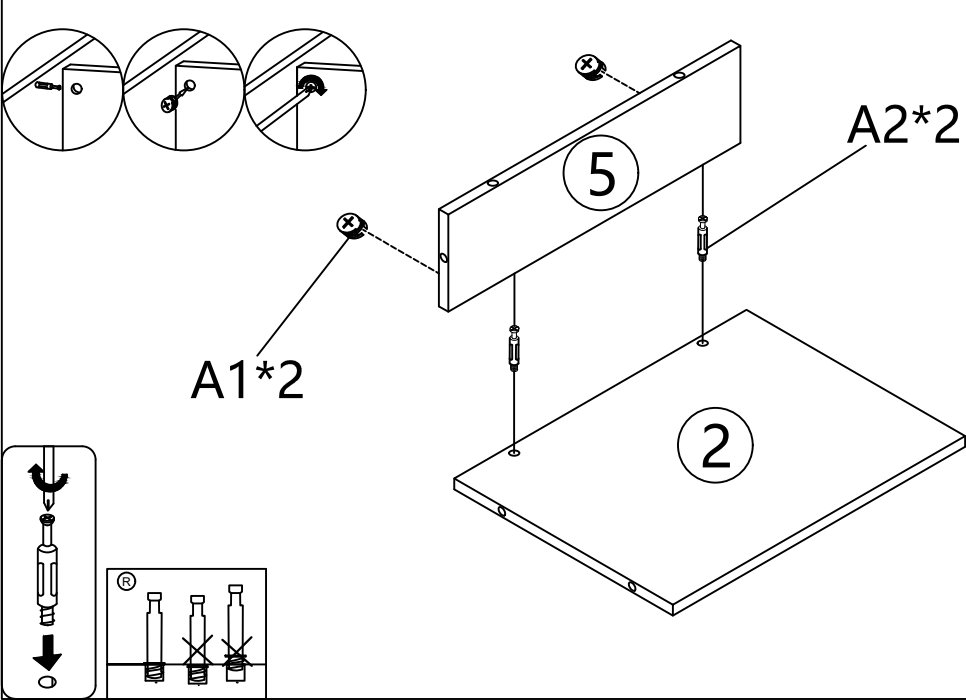
STEP 5



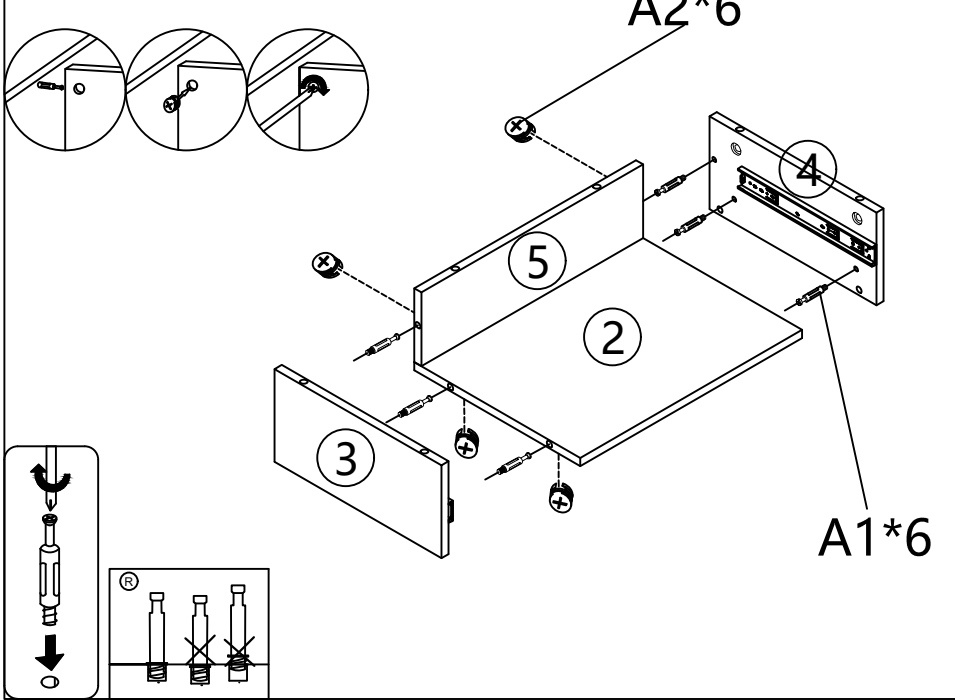
STEP 6



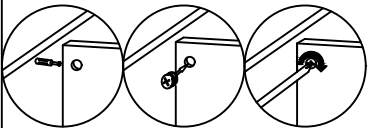
STEP 7



STEP 8

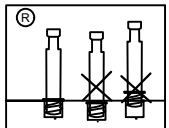
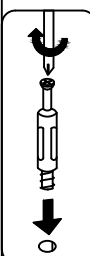
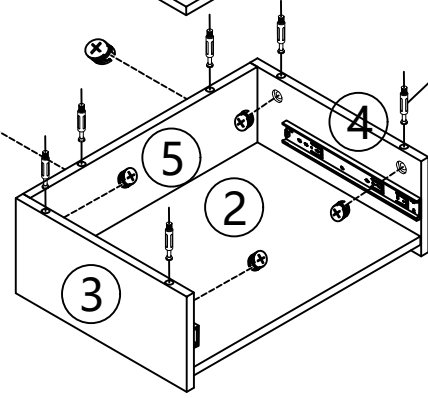
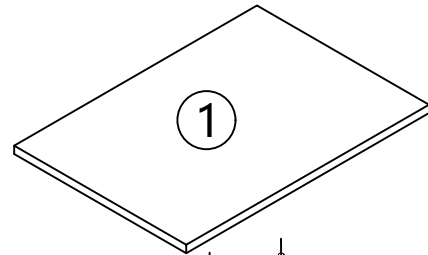


STEP 9



A2*6

A1*6

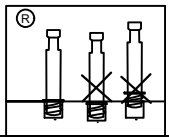
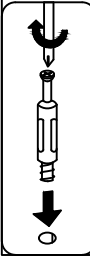
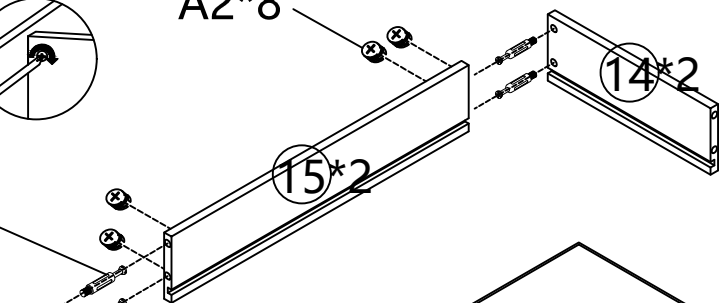


STEP 11

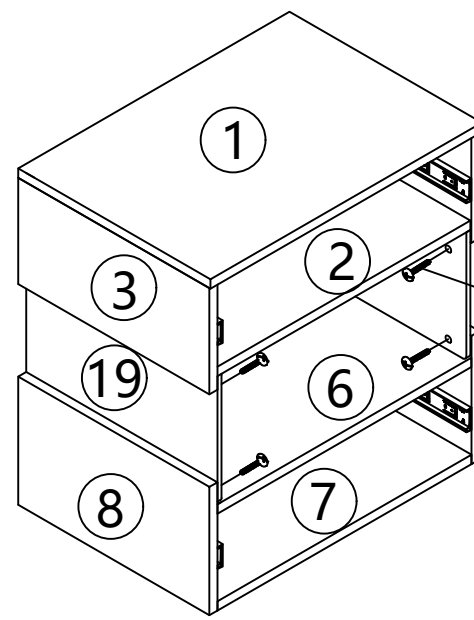


A2*8

A1*8



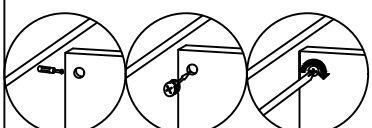
STEP 10



C*8

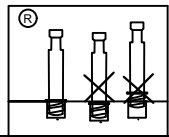
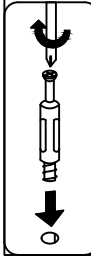
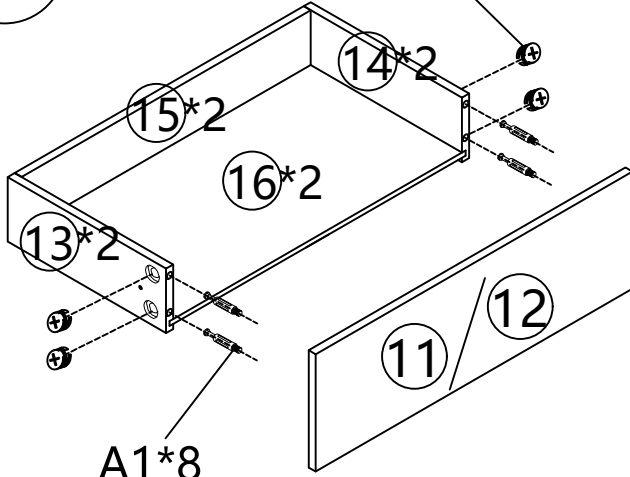


STEP 12

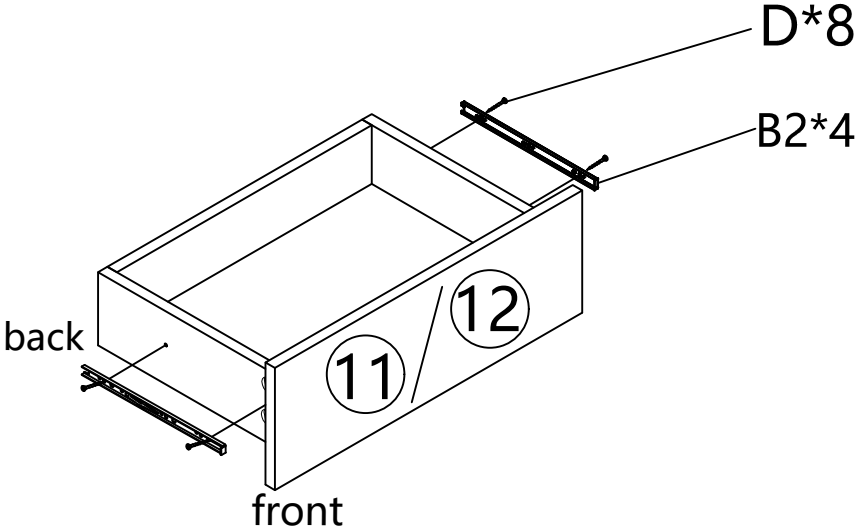


A2*8

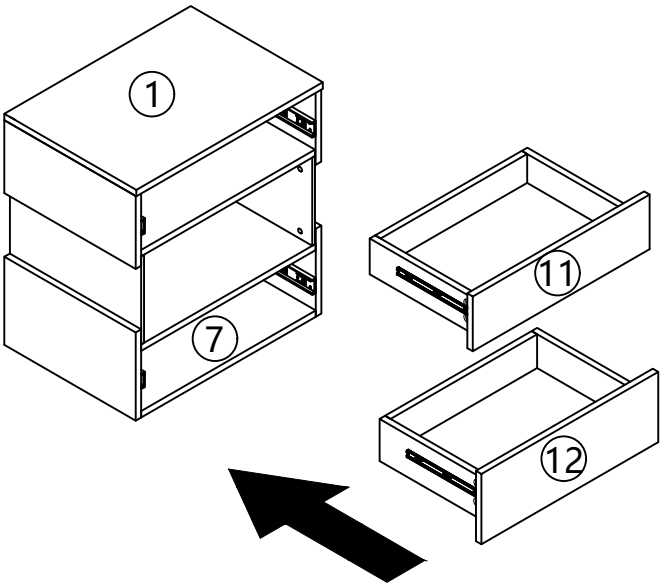
A1*8



STEP 13



STEP 14



STEP 15

For the high gloss panel, please peel off the plasticfilm after assembling

