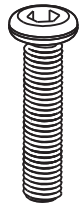


Assembly Instructions

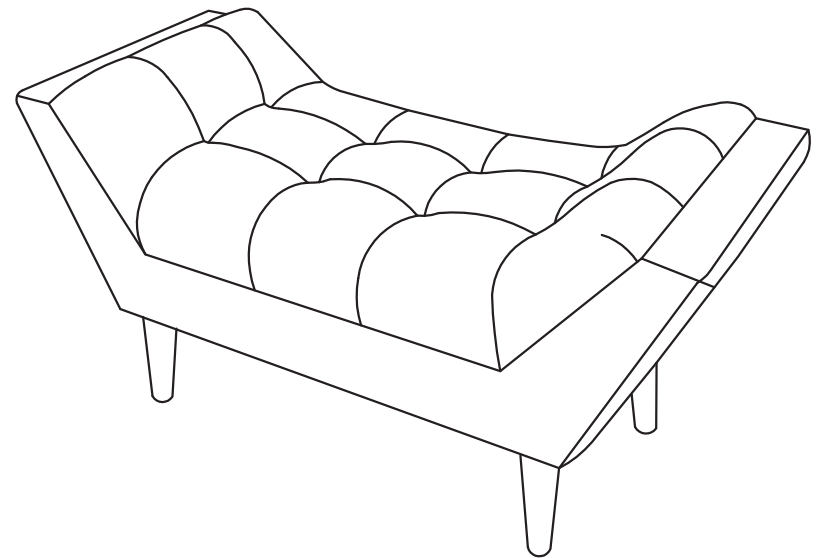
! Before you throw the carton, please ensure that you have all the parts needed for the assembly.

! **Hardware Note:**
1. For each step please don't fully tighten all the screws at first, when they all align to the holes you can fully tighten them.
2. All the bolts should be assembled **vertically** to the holes.

! **Spare parts** can be found in the hardware box if you do not have enough bolts for assembly.



2pcs



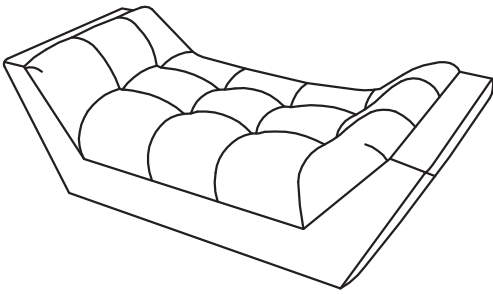
! THIS INSTRUCTION BOOKLET CONTAINS IMPORTANT SAFETY INFORMATION. PLEASE READ AND KEEP FOR FUTURE REFERENCE.

Assembly Instructions

Parts and Hardware

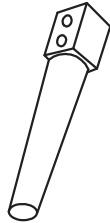
Please check to make sure you have all parts and hardware before starting assembly process.

1



Seat 1pc

2



Legs 4pcs

3



Bolts 8pcs

4



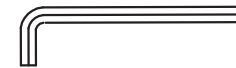
Flat Washers 8pcs

5



Spring Washers 8pcs

6



Wrench 1pc

Assembly Instructions

Assembly Instructions

Step 1: Assemble legs to the bottom of seat using bolts 3, spring washers 5 and flat washers 4. Half tighten the bolts until all of them are align to the holes. Then fully tighten them by the short side of wrench.

