

1

What You'll Need

Pencil

Spirit Level

Phillips Screw Driver

Power Drill

6mm Drill Bit (for stone and brick walls)

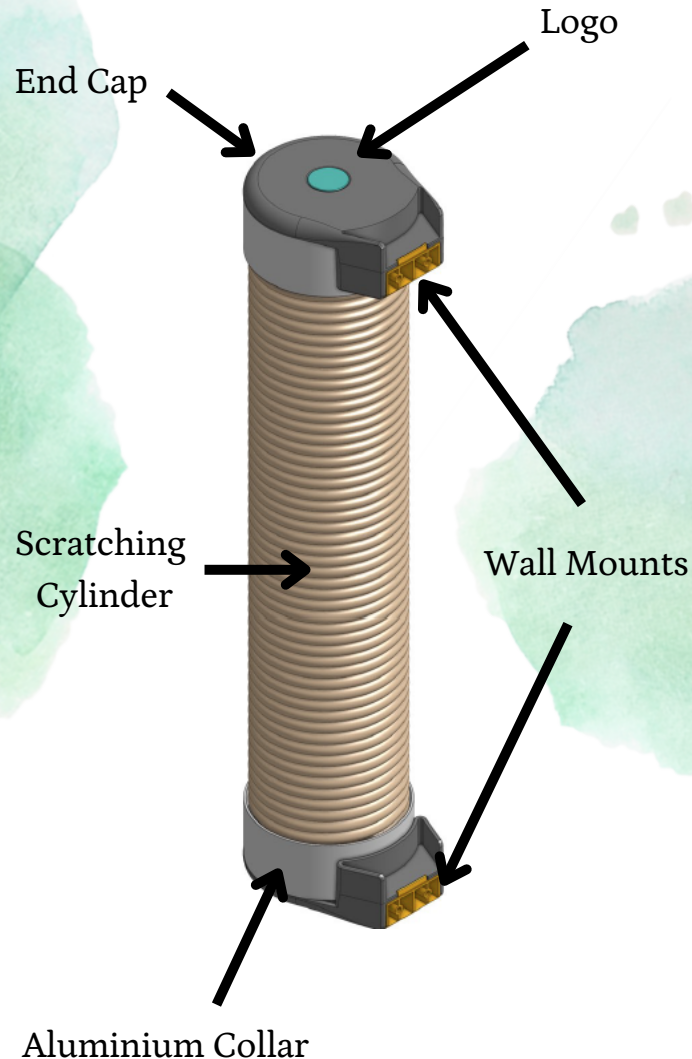
2mm Drill Bit (for wooden walls and studs)



To watch an installation video, please visit:
www.catipilla.com/installation-videos/

2

Components



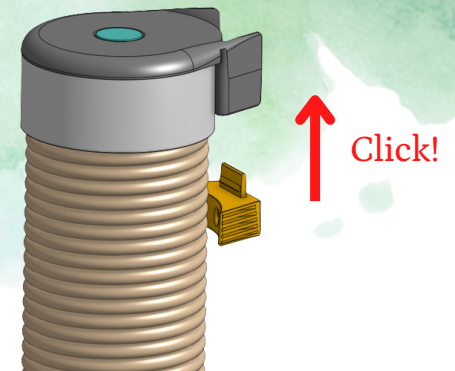
3

Preparation

Remove the unit from the box. The top has the Catipilla logo.

Remove the 2 x wall mounts from the parts bag.

Locate the wall mounts into the bottom slot of the end caps at each end of the cylinder. The protruding clip on the wall mounts should be facing **upwards**. The wall mounts will click into place.

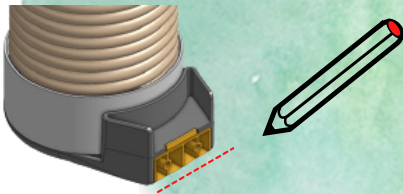


4

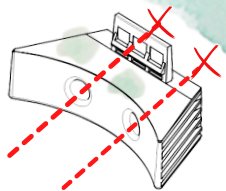
Locate In Position

Decide where to mount your Scratcher or Climbing Pole. Use the spirit level to make sure the unit is vertical.

Using a pencil, mark a line under the wall mount at either end of the unit.



Remove the wall mounts from the end caps and place them back against the line drawn. Mark the fixing holes on the wall.



Drill holes where you have just marked. Insert wall plugs if mounting on brick or stone. If mounting onto plasterboard, specialist wall plugs are required.

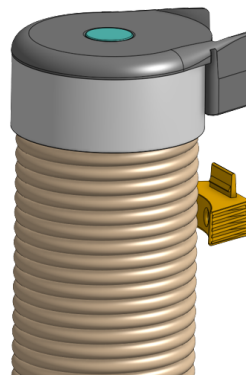
5

Mount To Wall

Screw the wall mounts into the wall using the screws provided. Ensure that the protruding clip is facing upwards.

Hand-tightening is sufficient. Do not over-tighten the screws.

Lastly, lower the scratching cylinder onto the wall mounts. Both end caps need to be lowered onto the wall mounts at the same time. They will both click into place.



Click!

Good news! You have finished installing your Scratcher or Climbing Pole.

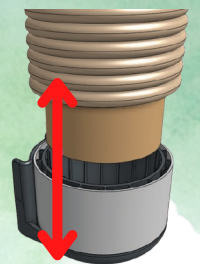
6

Clean & Replace

This unit can be removed from the wall by pushing back on both protruding clips on the wall mounts while lifting the scratching cylinder upwards. This is a lot easier with 2 people!

The rope can be cleaned with soapy water. The end caps can be removed from the scratching cylinder by pulling with some force. It is a tight fit!

Removing the cylinder from the end cap.



This allows you to rotate the cylinder if the rope becomes worn. You can also replace the cylinder in full when it becomes worn. Replacement cylinders are available on our website.