

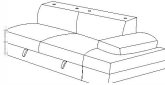








**ASSEMBLY INSTRUCTION**  
**Left side Chaise with Adjustable Headrest**  
**Right side 2-Seater with Pull-Out Bed and**  
**Adjustable Headrests**

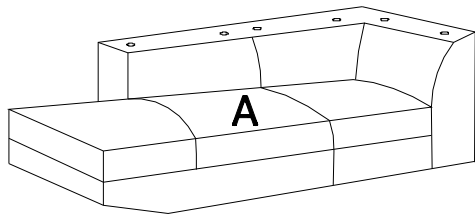
 **NOTE:** Do not use power tools for assembly. Power tools increase the risk of over tightening which lead to splitting or cracking the wood.

**COMPONENT LIST**

NO.	DRAWING	QTY	DESCRIPTION
A		1	LSF Chaise
B		1	RSF 2-Seater
C		1	Chaise Rear Headrest
D		2	2-Seater Headrest
E		1	Chaise Front Headrest
F		1	Chaise Middle Headrest
G		2	Pillow
H		4	Caster
I		6	Metal Leg / Ø2" * 3-3/8"
J		40	Screw / 5*50MM

# STEP 1

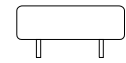
LSF



C



D: 2 PCS



E



F



G



H: 4PCS

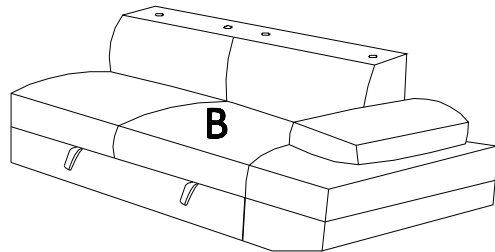


I: 6 PCS



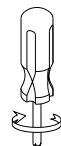
J: 40 PCS

RSF



G

# STEP 2

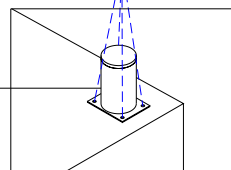


(Not provided)

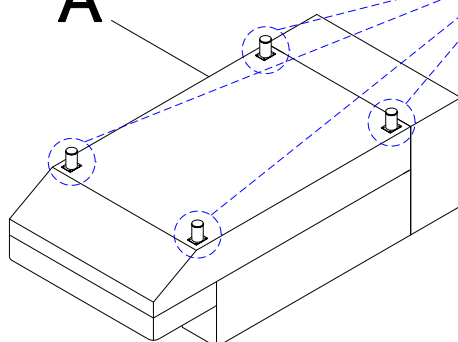
J

Align and assemble legs onto 2-seater and chase bottom as shown in drawings.

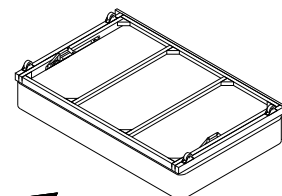
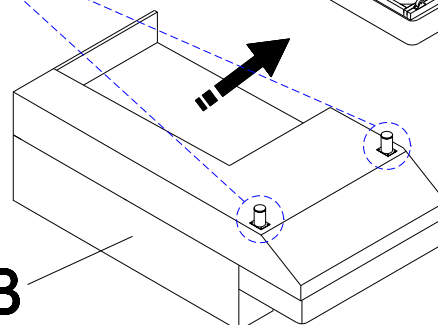
I



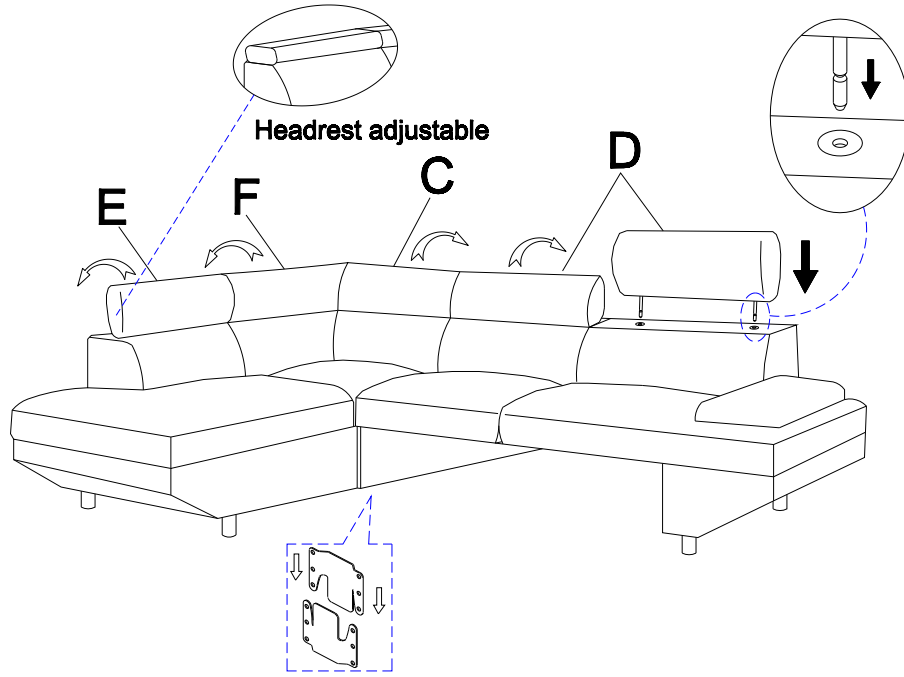
A



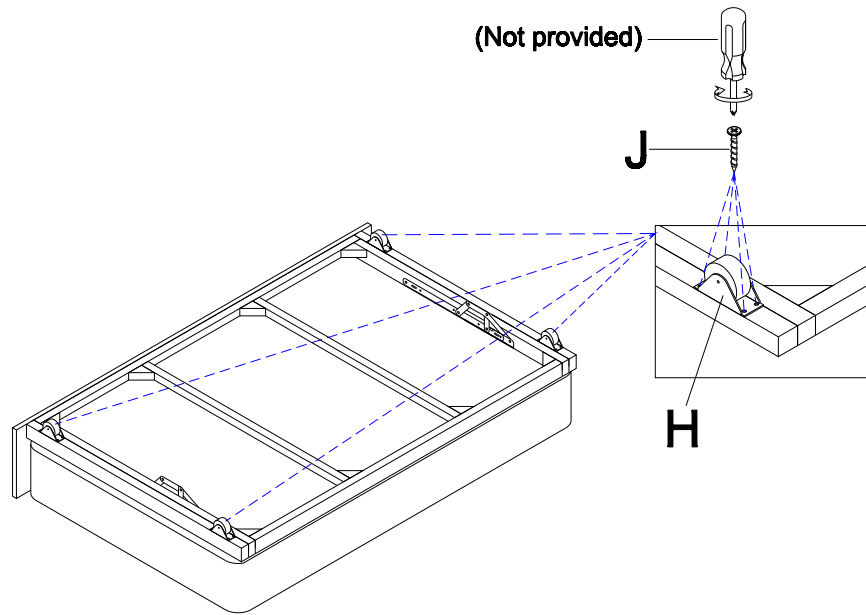
B



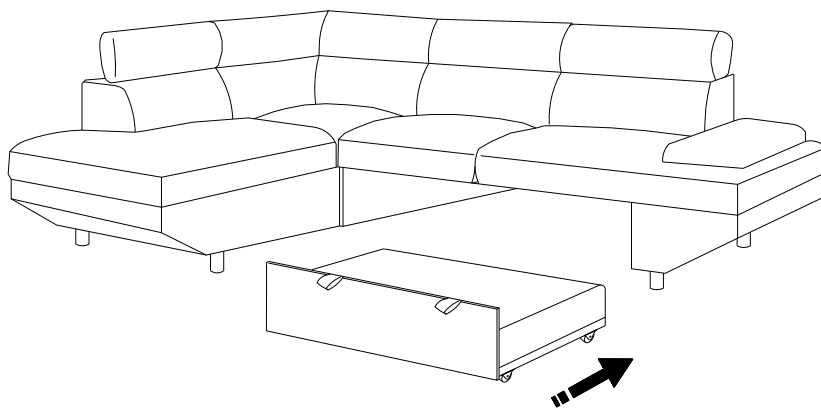
# STEP 3



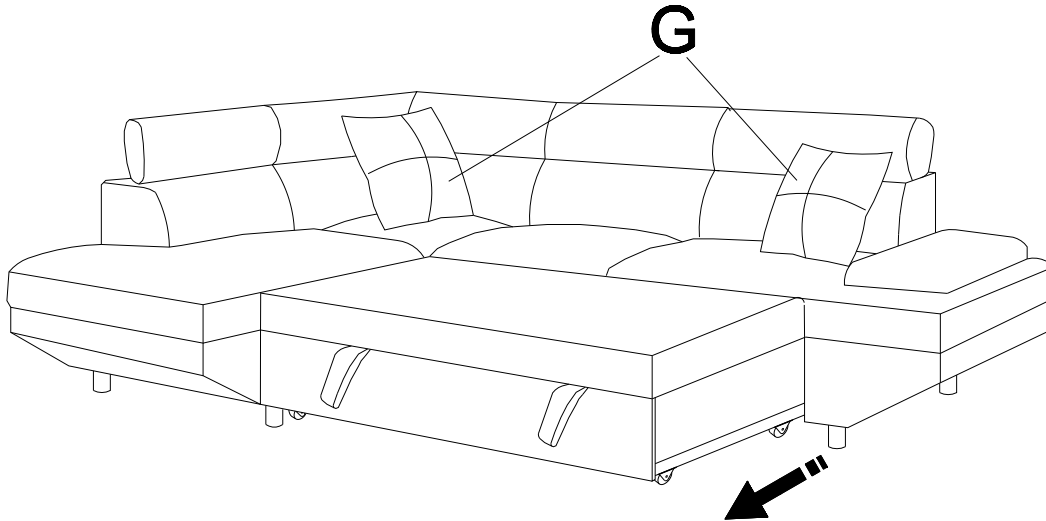
# STEP 4



# STEP 5



## STEP 6



### Care instruction for fabric furniture.

In order to maintain the original appearance of your fabric furniture, please follow below simple care procedures:

- Avoid exposing furniture directly to sunlight or heating or heating conditioning outlets. Sunlight and/or exposure to heating and air conditioning outlets will fade/damage fabric.
- Do not place your upholstered furniture too close to windows, radiators, or vents, and be sure to use windows, radiators, or vents.
- Vacuum or wipe with a cloth regularly to remove dust.



For items used on wooden floor, hard surfaces or carpets, it is recommended to install protective pads under all legs and supports to avoid/prevent from damages/scratches and discoloration.