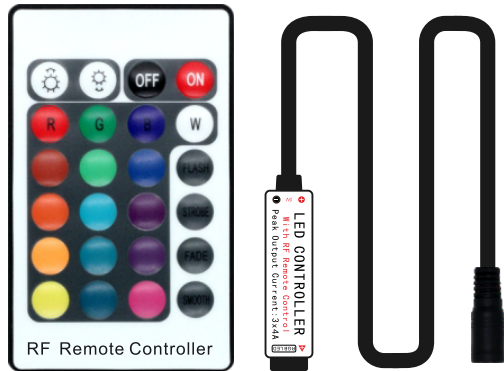
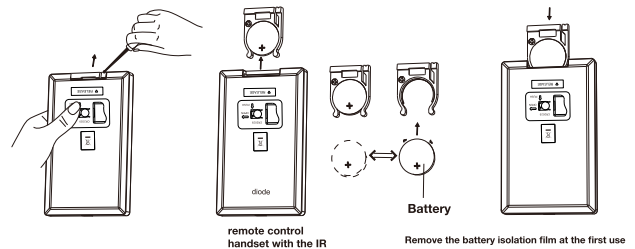



LED Strip Light



Instruction Manual

The peak output current is 4 amperes and maximum constant current is 2 amperes per channel. Please reduce load if main unit is overheating.





WARNING

DO NOT IMMERSE IN WATER

DO NOT IMMERSE IN FIRE

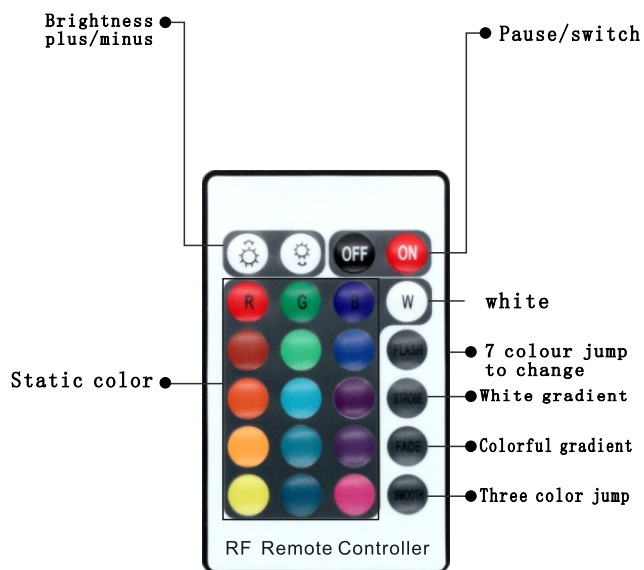
CHILDREN UNDER THE AGE OF 16 SHOULD USE THIS PRODUCT UNDER ADULT SUPERVISION.

If you have any question after receiving the products, please contact our customer service, we will reply to you within 24 hours.



24-Key RF Controller

REMOTE CONTROL INSTRUCTIONS



1

Operation Instructions of Controller

Before Installation:

- In case of overheat, please unwrapped the LED strip before powered!
- Make sure the surface smooth, clean and dry before applying the 3M backing tape.
- 3M backing tape suitable for smooth surface, such as glass, smooth ceramic, etc. Do not stick to rough wood surface, lime wall, etc
- Please note that it needs to connect "ARROW TO ARROW" between RGB control box and led strips. (see below picture)

Specifications

Working temperature: -20-60°C
 Product size: L62×W35×H23mm
 Net weight: 60g
 Output: Three CMOS drain-open output
 Max load current: 3X4A

Supply voltage: DC 12V
 Package size: L105×W65×H55mm
 Gross weight: 70g
 Connecting Mode: Common anode

Control Method:

Using RF remote control to control the LED controller, there are 24 buttons, the function of each button is as follows:

Brightness+(Speed up)	Brightness-(Speed down)	Off	On
Static red	Static green	Static blue	Static white
Static orange	Static Pea green	Static dark blue	7 color jumpy change
Static dark yellow	Static cyan	Static brown	All fade out&fade in
Static yellow	Static light blue	Static pink	7 color fade change
Static straw yellow	Static sky blue	Static purple	3 base color jumpy

Warning:

- Supply voltage of this product is DC 5V never connect to DC24V or AC220V.
- Never connect two wires directly in case of short circuit.
- Lead wire should be connected correctly according to colors that connecting diagram offers.
- Warranty of this product is one year; in this period we guarantee replacement or repairing with no charge, but exclude the artificial situation of damaged or overload working.
- Within 5 seconds after the controller is powered on, press the (STROBE+FADE) button at the same time to realize the code lock between the remote control and the controller to prevent signal interference.

2