

# Model: WL-LED310

## LEDme® Step Light

# WAC LIGHTING

Responsible Lighting®



Fixture Type:

Catalog Number:

Project: \_\_\_\_\_

Location: \_\_\_\_\_

### PRODUCT DESCRIPTION

Circular window LEDme® Step Light. Designed for safety and style on stairways, patios, decks, balcony areas, walkways and building perimeters. Features an architectural design. Energy efficient for long-lasting indoor and outdoor lighting solutions. Creates an attractive, romantic impression at night. Colored lights can be used for way finding.

### FEATURES

- Direct wiring, no driver needed
- Low profile, flush to wall aesthetics with no visible hardware
- 40,000 hour rated life
- Title 24 Compliant
- Balanced lighting, free of shadows with minimum glare
- Up to 200 fixtures can be connected in parallel
- Replaceable LED module
- 5 year WAC Lighting product warranty

### ORDER NUMBER

Model	Light Color	Finish	Lumens	
WL-LED310	C	White	115	
		AM	Amber	71
			RD	Red
	BL			Blue
		BN*		Brushed Nickel
			BZ	Bronze
	WT			White
		BN*		Brushed Nickel
			BZ	Bronze
	WT			White
		BN*		Brushed Nickel
			BZ	Bronze
WT	White			7
	BN*	Brushed Nickel		13
		BZ	Bronze	13
WT			White	13

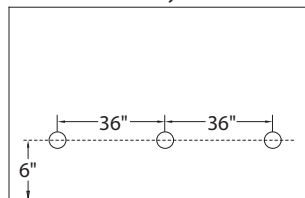
\*Brushed Nickel Finish is for interior use only

**WL-LED310** -  -

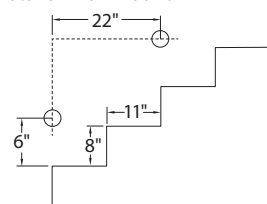
Example: WL-LED310-C-WT

### SPACING RECOMMENDATIONS FOR OPTIMAL LIGHT DISTRIBUTION

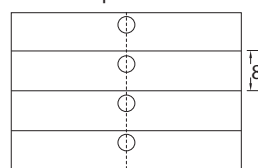
#### Corridors / Hallways



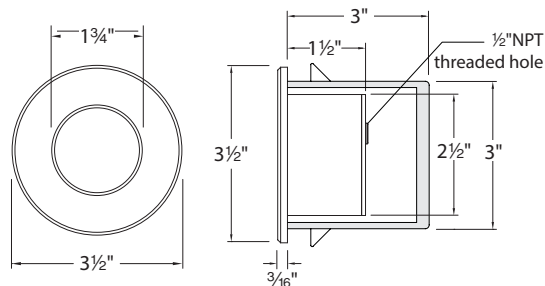
#### Stairs - Wall Mount



#### Stairs - Step Mount



Mount in center of stair as close to the upper tread as possible. For best results use one light per step for steps narrower than 5'.



### SPECIFICATIONS

**Construction:** Die-cast aluminum

**Input:** 120VAC 50/60Hz

**Power:** Direct wiring, no remote driver needed

**Light Source:** 3000K Samsung HV-AC High Power LED, CRI: 85  
Total power consumption of 3.9W

**Mounting:** Supplied with junction box for recessed installation  
Suitable for new construction or retrofit installations.  
See next page for spacing recommendations

**Dimming:** Dim to 10% with electronic low voltage (ELV) dimmer  
Approved dimmers: Lutron Nova-T NTELV-300 & NTELV-600,  
Lutron Vietri VTELV-600, Lutron Diva DVELV-300P,  
Lutron Skylark SELV-300P, Lutron Maestro MAELV-600

**Standards:** IP66, UL & cUL listed for wet locations, Title 24 Compliant

### FINISHES



wacighting.com  
Phone (800) 526.2588  
Fax (800) 526.2585

Headquarters/Eastern Distribution Center  
44 Harbor Park Drive  
Port Washington, NY 11050

Central Distribution Center  
1600 Distribution Ct  
Lithia Springs, GA 30122

Western Distribution Center  
1750 Archibald Avenue  
Ontario, CA 91760