

# 7/8" French Curtain Rod 28" - 48"

## Safety Information



**CAUTION:** Before installing brackets, always check there are no hidden wires or pipes.

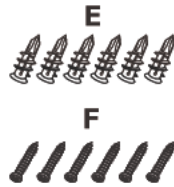
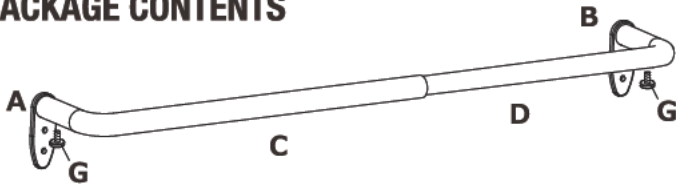


**WARNING:** Product failure due to using incorrect fixings is responsibility of the installer.

## Pre-Installation

**NOTICE:** The finials shown are for illustration purposes only. It may not represent the style of finial purchased. For larger width windows, two people may be required for easier installation.

## PACKAGE CONTENTS



Part	Description	Quantity	Part	Description	Quantity
A	Large side bracket	1	D	Small curve rod	1
B	Small side bracket	1	E	Screw-in anchors	6
C	Large curve rod	1	F	Screws	6
			G	Bracket secure screws	2

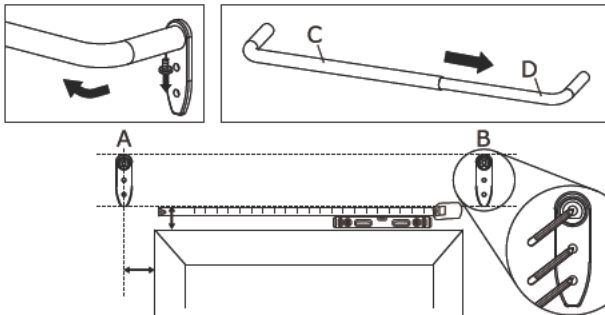
## CARE AND CLEANING

To remove dust, use a vacuum cleaner with a brush attachment end or gently rub the rod using a water-dampened cloth with a mild detergent only.

## INSTALLATION

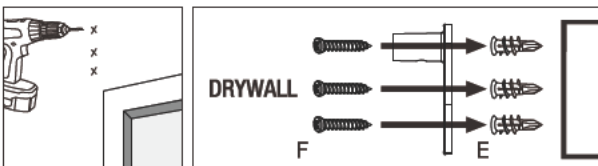
### 1 Before bracket installation

Unfasten screws on both curve rods (C & D) to release from side-brackets (A & B), and then slide small curve rod (D) out of large curve rod (C). Place large side-bracket (A) on the LEFT, small side-bracket (B) on the RIGHT. Use Level and Tape Measure for alignment. Note: Ensure the bracket screw hole on the protrusion is facing downward.



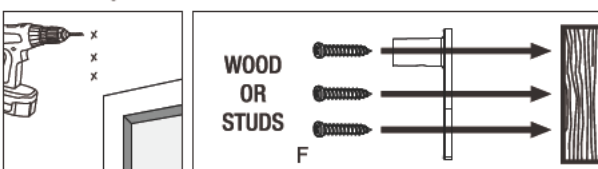
### 2A Mounting to drywall or paneling

Pre-drill two pilot holes per bracket base using a 1/4 in. bit. Drill horizontally without forcing the drill or enlarging the hole. To install bracket bases, screw anchors (E) into the pilot holes and then attach the bracket bases to the wall using the screws (F).



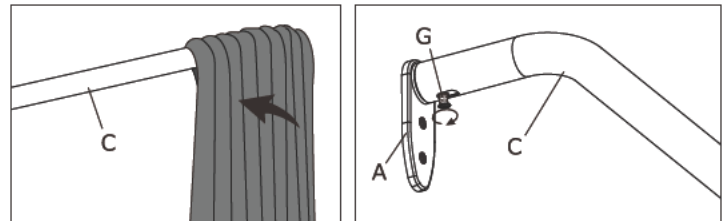
### 2B Mounting directly to wood or studs

Pre-drill two pilot holes per bracket base using a 3/32 in. bit. Drill horizontally without forcing the drill or enlarging the hole. To install bracket bases, fasten the screws (F) into the pilot holes.

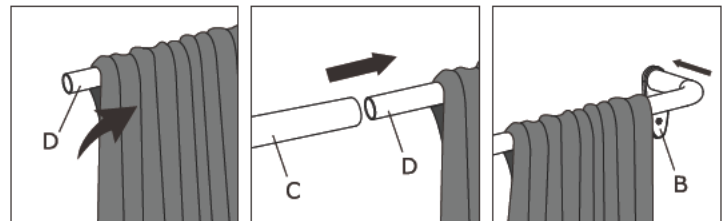


### 3 Curtain Rod Assembly

Feed one drapery panel onto large curve rod (C). Install large curve rod (C) onto large side-bracket (A) on the LEFT, and secure with screw (G).



Feed second drapery panel onto small curve rod (D), and then insert small rod (D) into large rod (C). Install small curve rod (D) onto small side-bracket (B) on the RIGHT and secure with screw (G).



### 4 Final adjustment

Wrap and tuck drapery panels around curve rods for room darkening effect.

