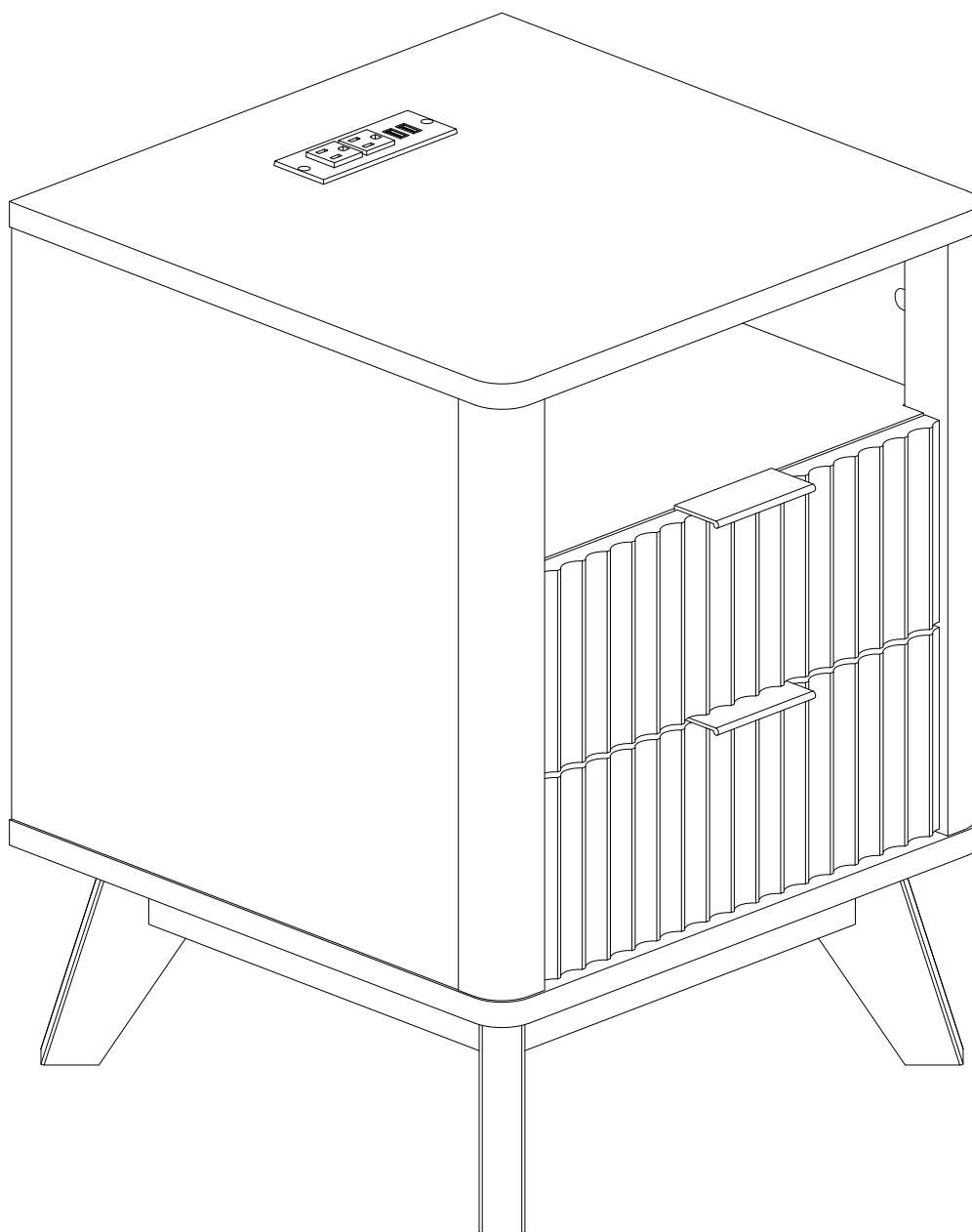


AI-FPSC18ST

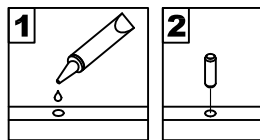
Assembly Instructions



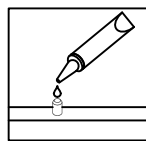
Customer Service E-mail Address: xiuxiumaoyius@163.com

General Assembly Guidelines

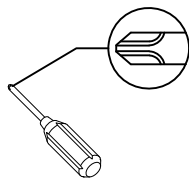
- I. Ensure that all parts and hardware are available before beginning assembly.
- II. Follow each step carefully to ensure the proper assembly of this product.
- III. Two people are recommended for ease in the assembly of this product.
- IV. The three main types of hardware used to assemble this product are : wood dowels , screws and bolts.
- V. The provided glue is to secure wood dowels in place . When first inserting dowels , locate the appropriate hole for the dowel , place a small amount of glue in the hole and insert the dowel . Wipe away excess glue immediately.



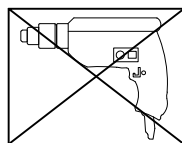
In future assembly steps when dowels are necessary to attach assembly parts together , place a small amount of glue on the end of the dowel before attaching parts together . Wipe away excess glue immediately.



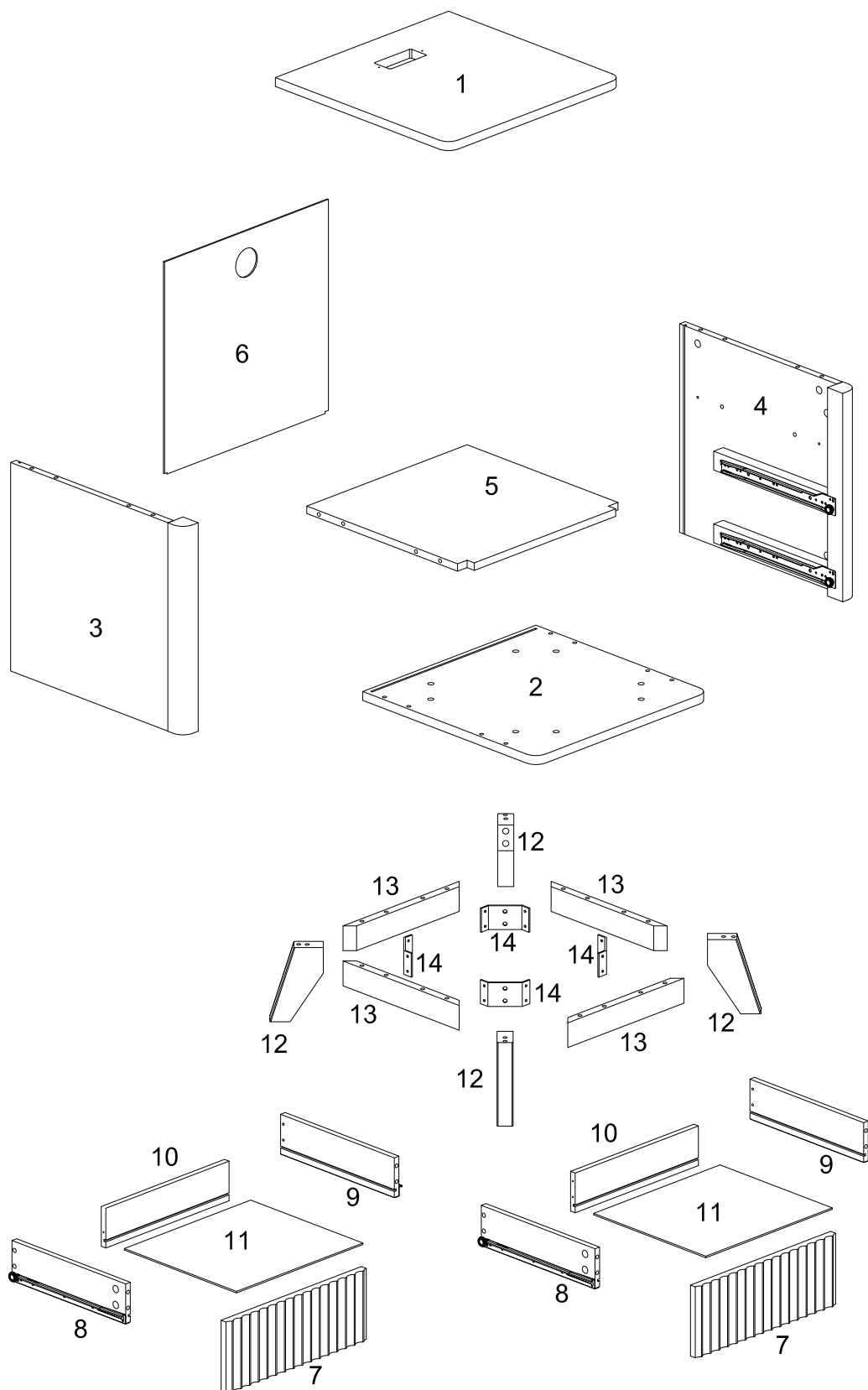
- VI. A Phillips head screwdriver is required for the assembly of this product .




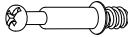



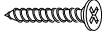
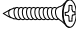
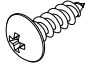
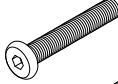
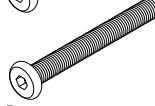

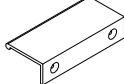

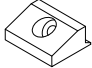
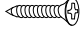

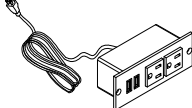
- VII. Power tools should not be used to assemble this product .

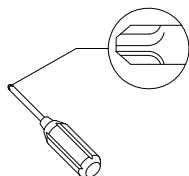


Parts List



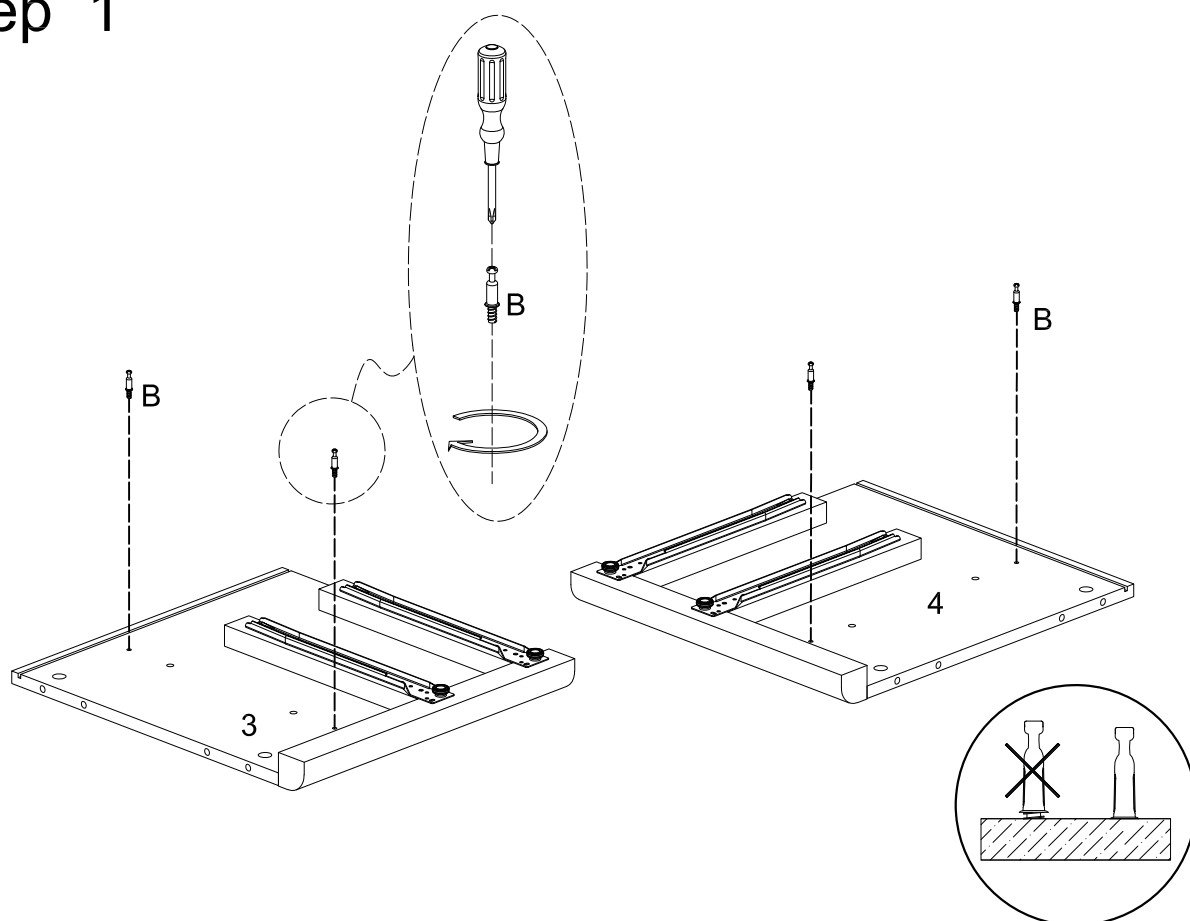
Hardware List

A		Ø8x30mm	Dowel	24 pcs
B		Ø6x35mm	Cam bolt	16 pcs
C		Ø15x11mm	Long cam lock	8 pcs
D		Ø30mm	Cam cover	14 pcs
E		Ø15x10mm	Short cam lock	8 pcs
F		Ø4x38mm	Screw	8 pcs
G		Ø3x12mm	Screw	6 pcs
H		Ø5x15mm	Screw	16 pcs
I		1/4x28mm	Bolt	8 pcs
J		1/4x50mm	Bolt	8 pcs
K		M4	Allen Wrench	1 pcs
L			Handle	2 pcs
M			Glue tube	1 pcs
N			Plastic wedge	4 pcs
O		Ø3x17mm	Flat-head screw	4 pcs
P		Ø6x50mm	Screw	8 pcs
Q			USB Interface	1 pcs

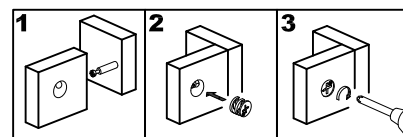
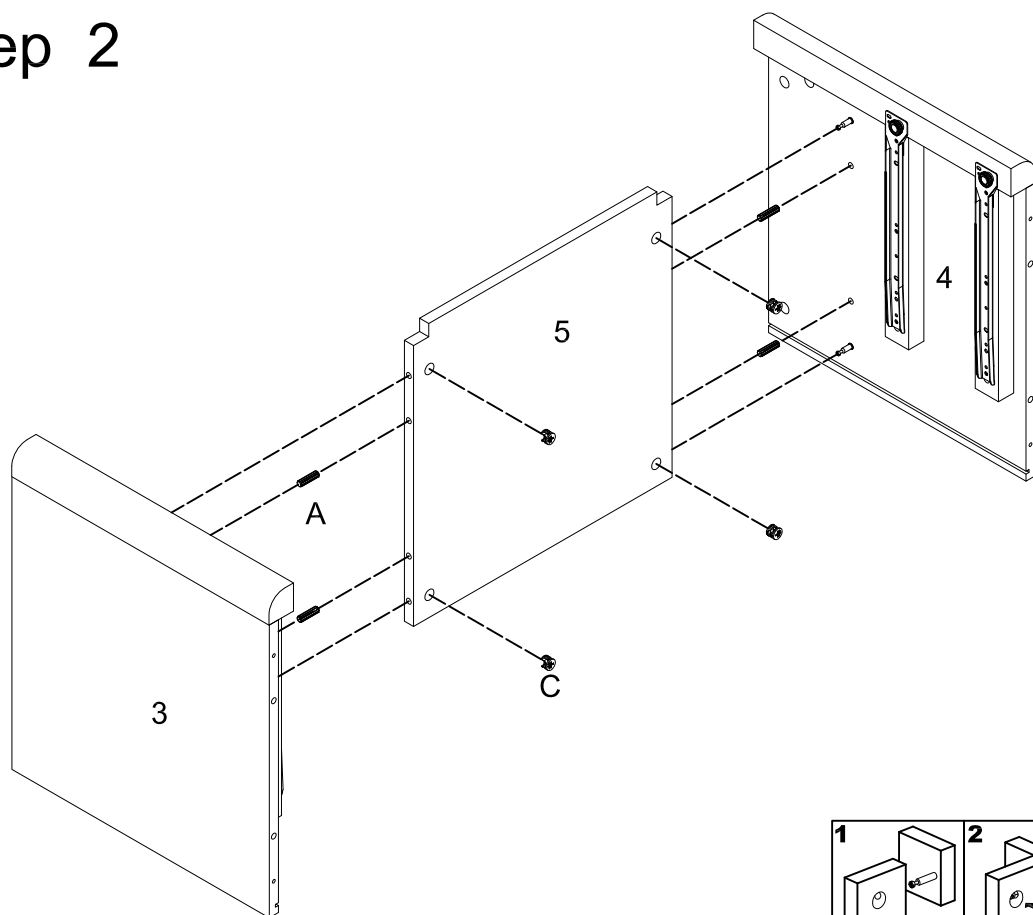


Philips head screwdriver required for assembly
(not included)

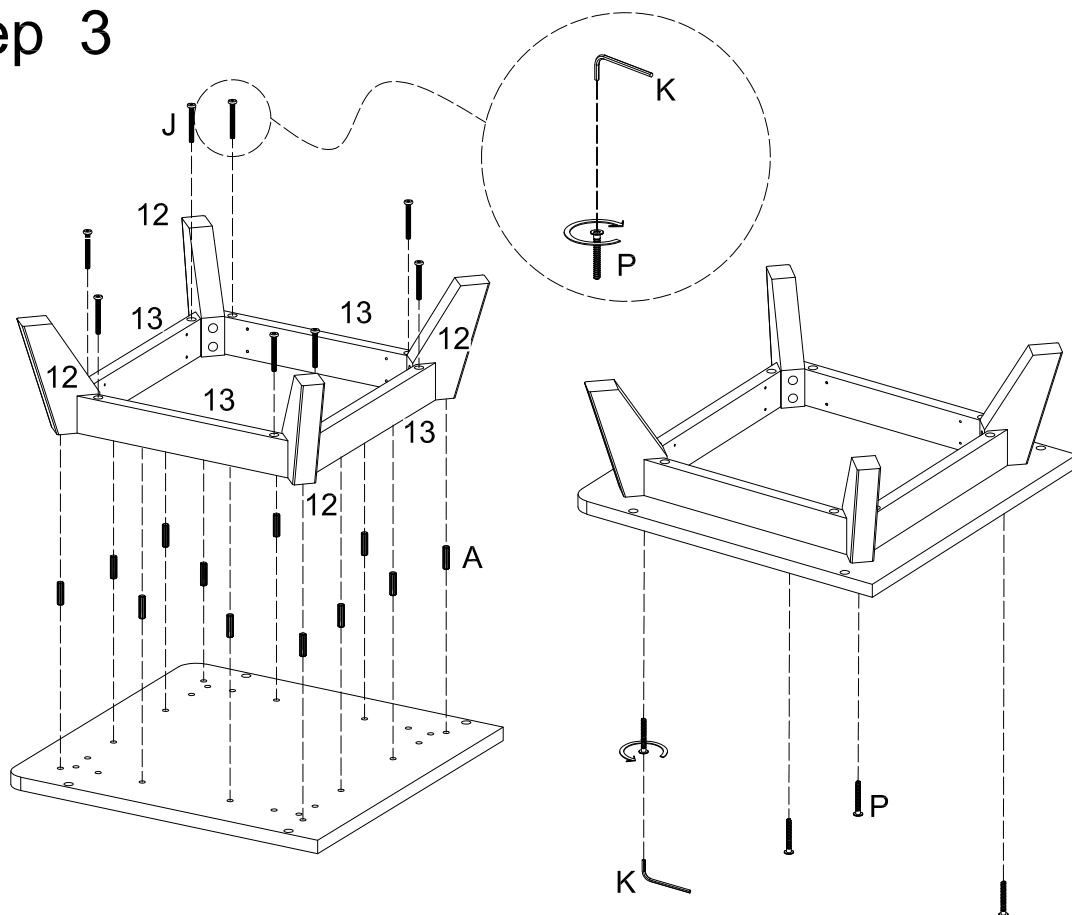
Step 1



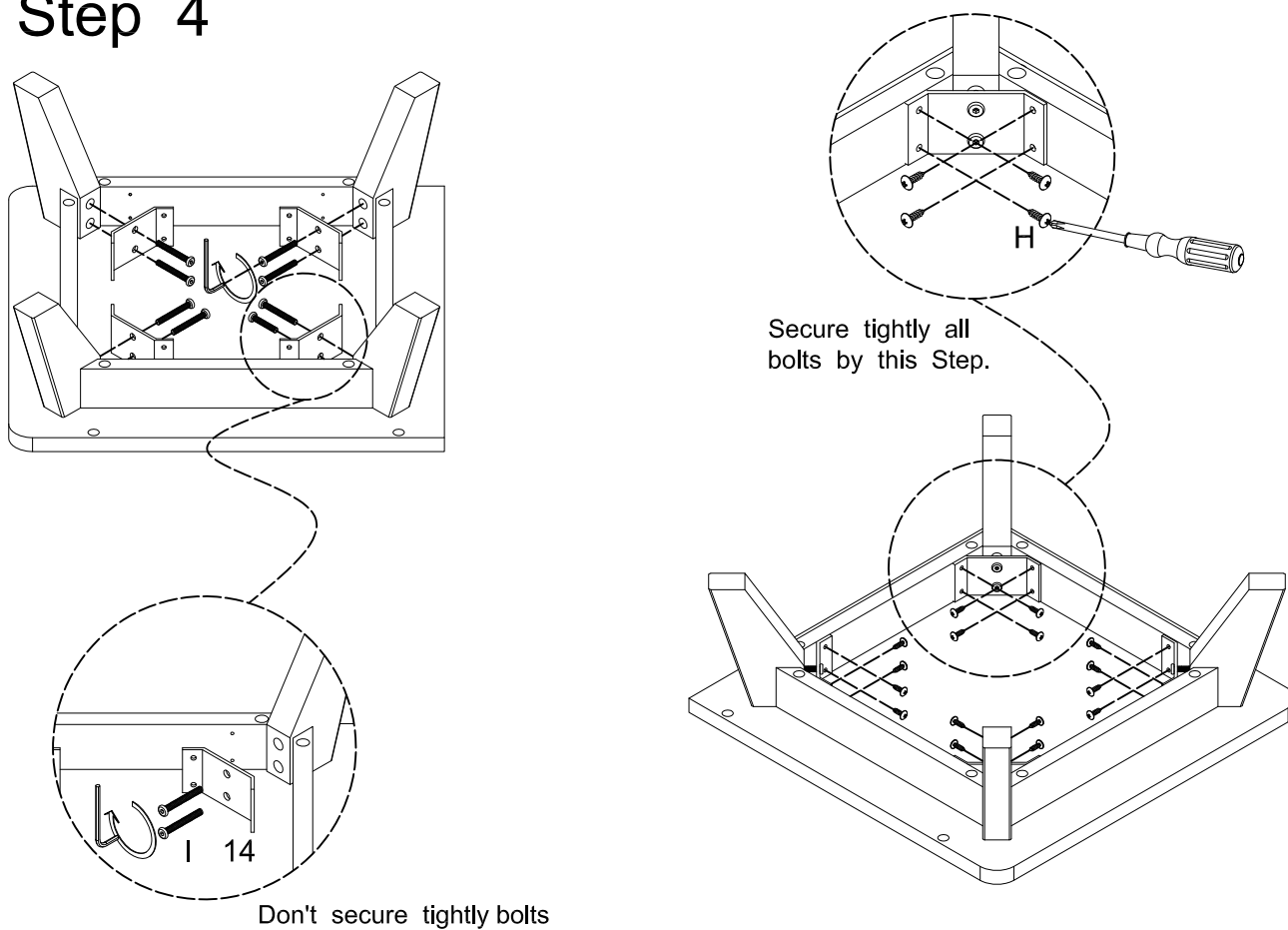
Step 2



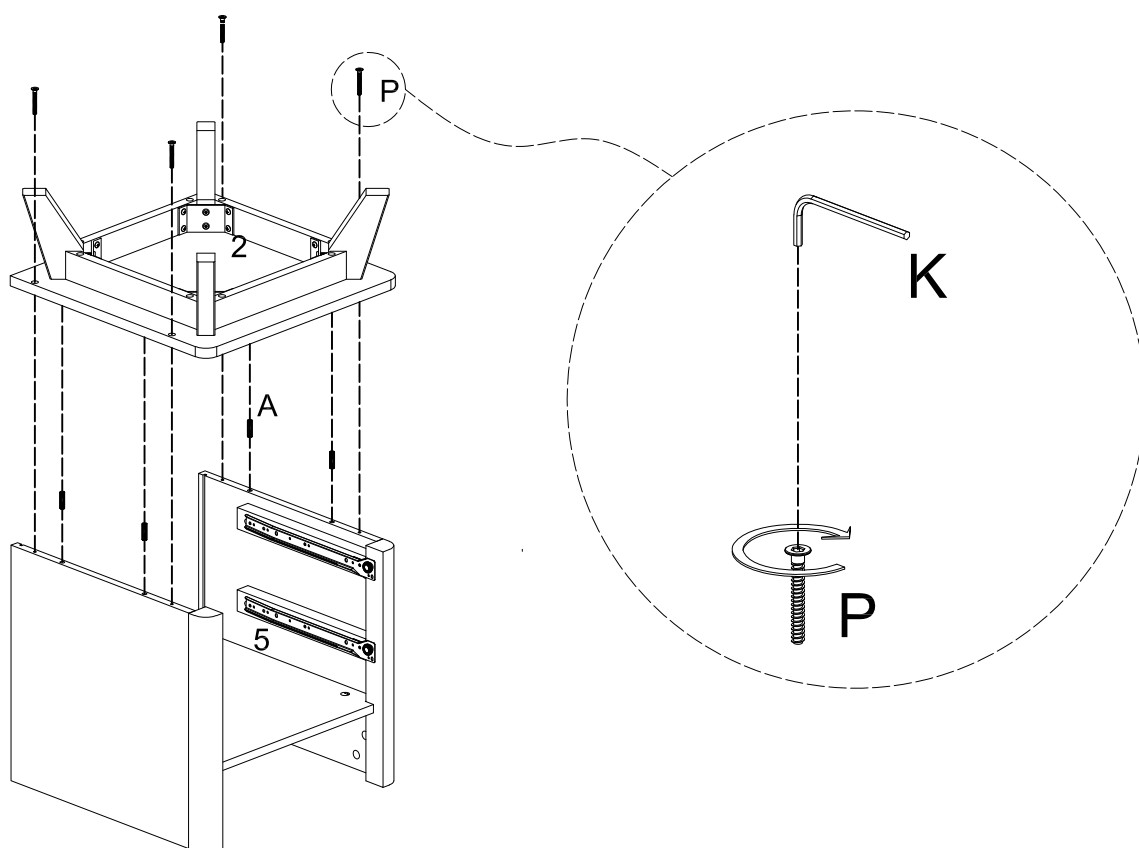
Step 3



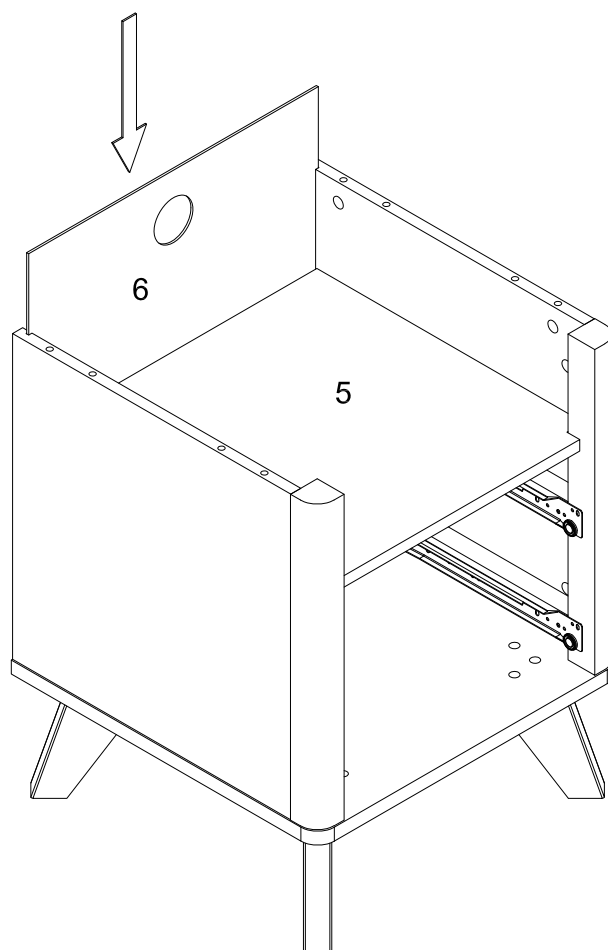
Step 4



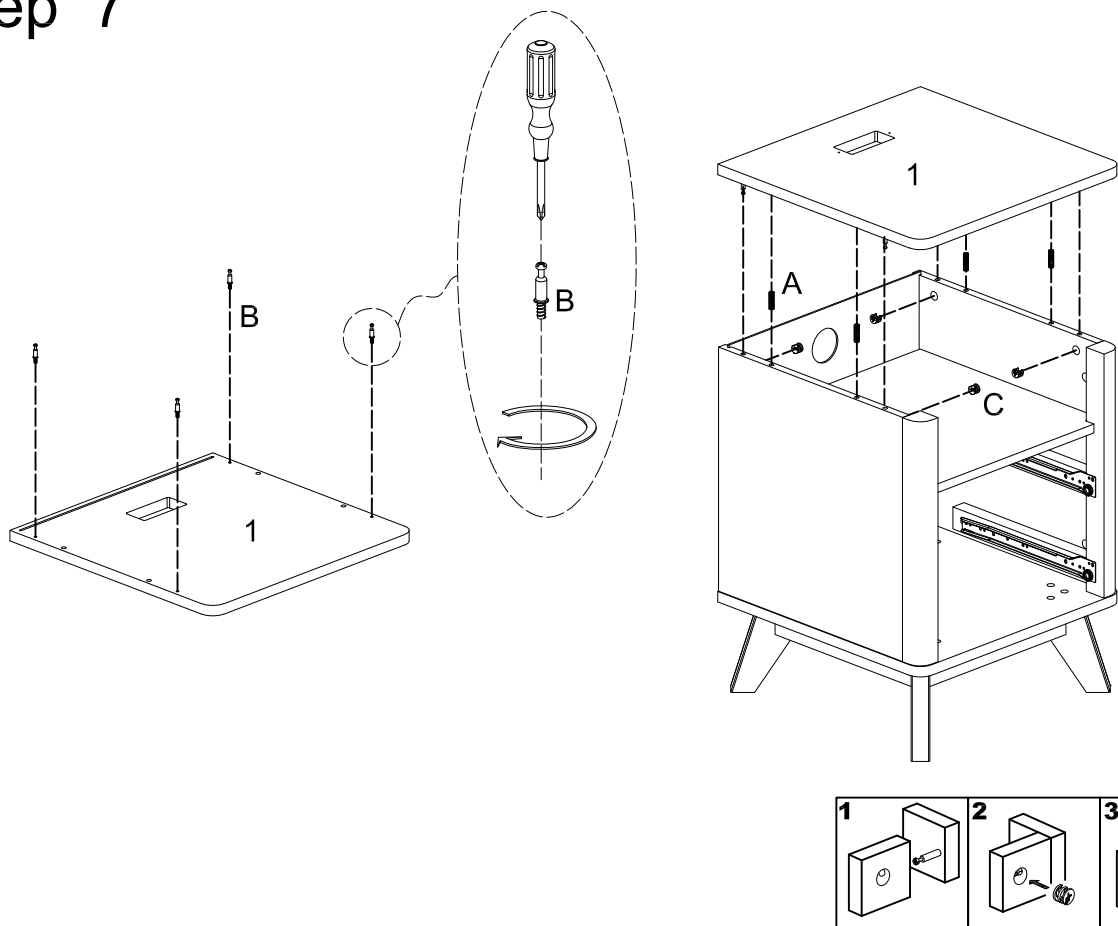
Step 5



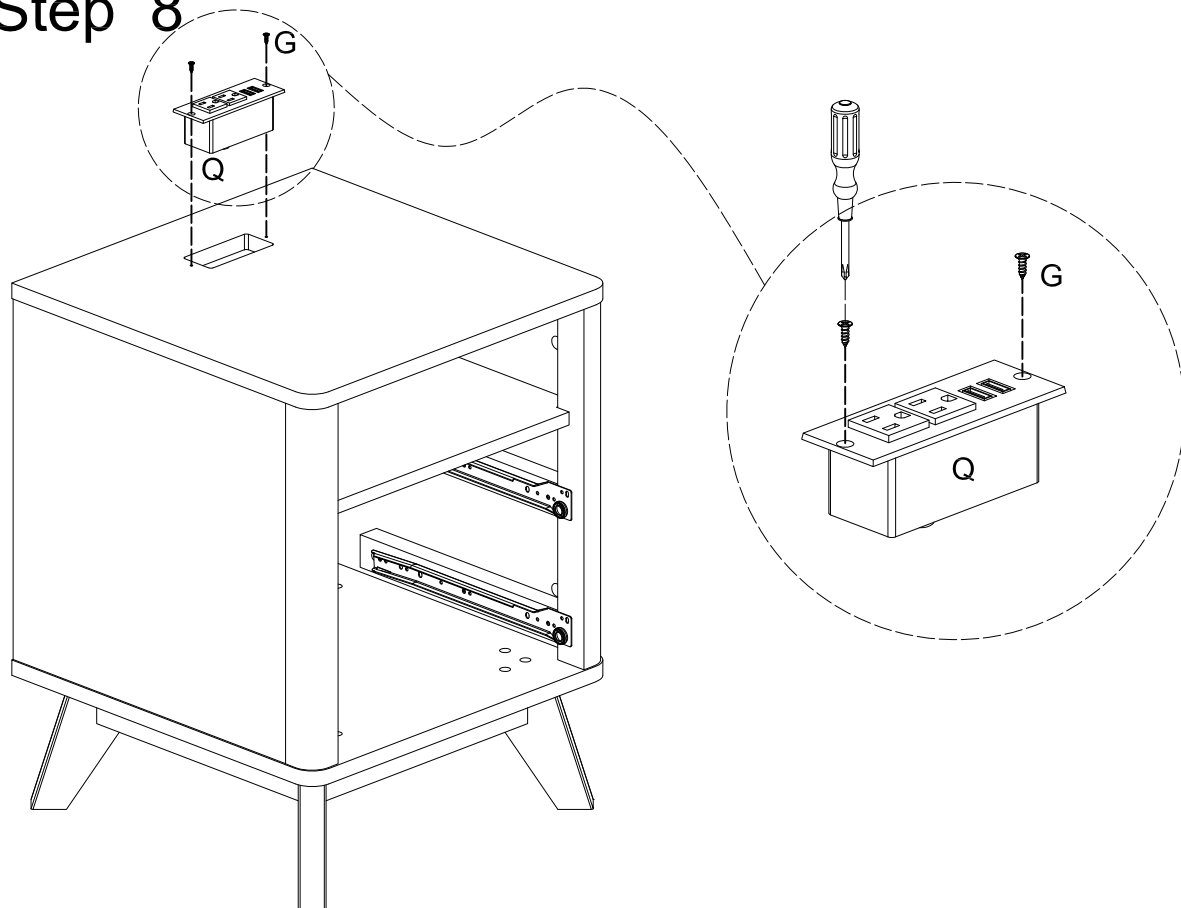
Step 6



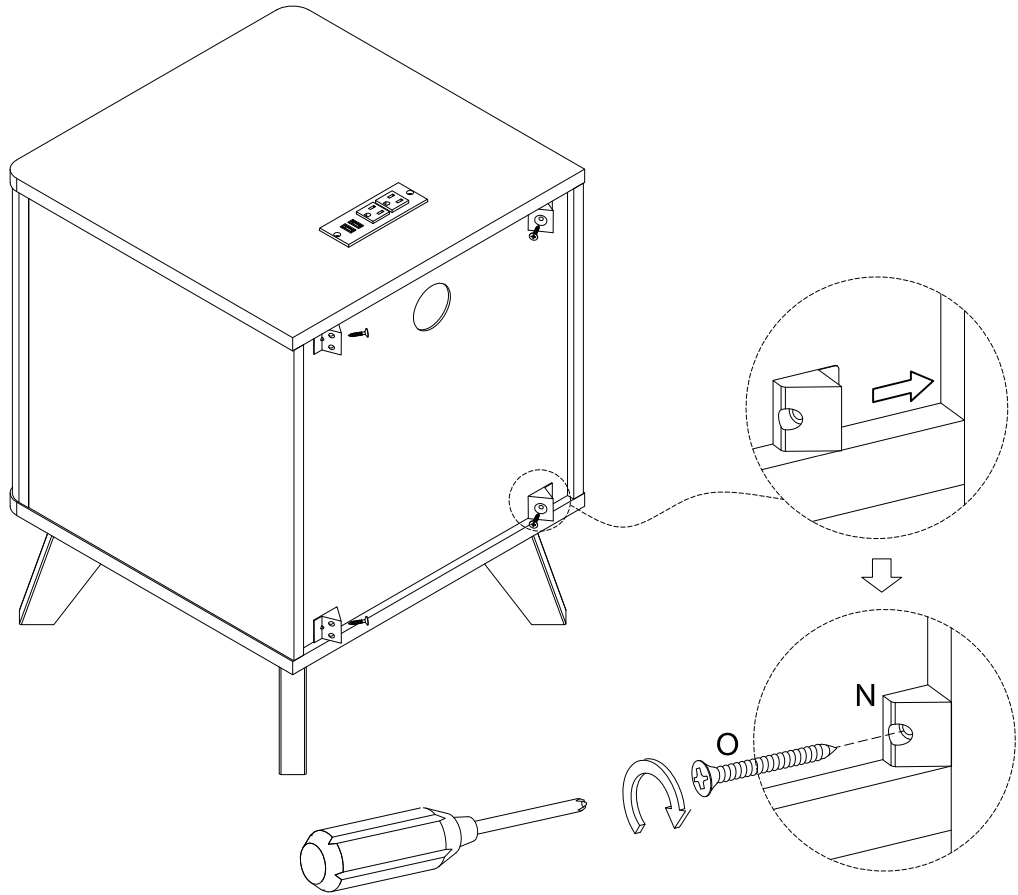
Step 7



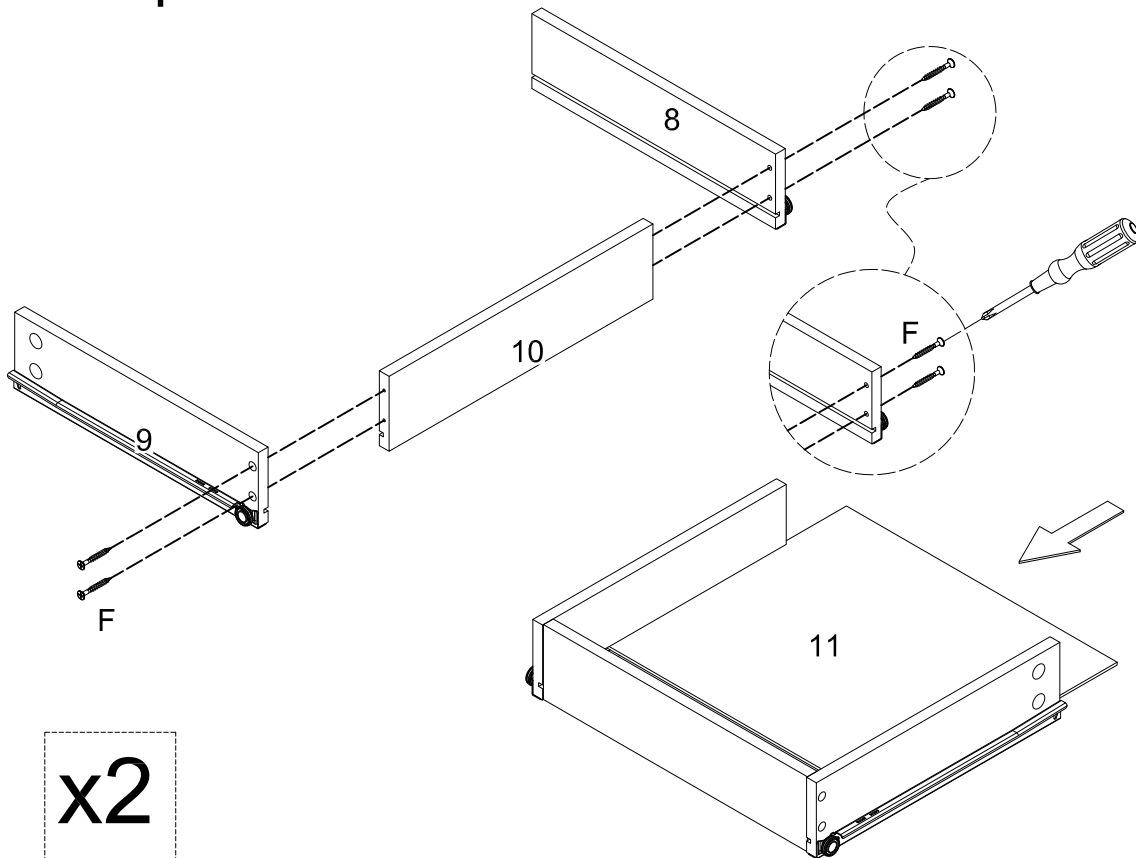
Step 8



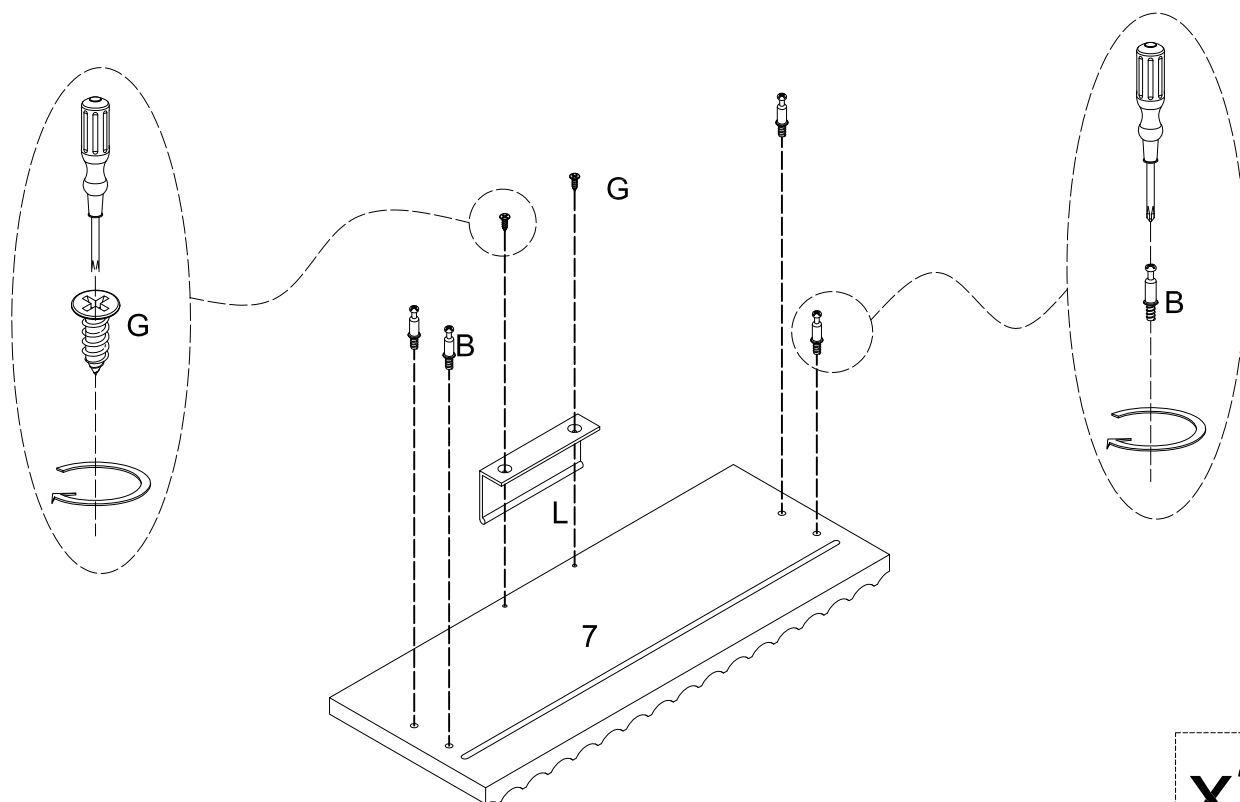
Step 9



Step 10

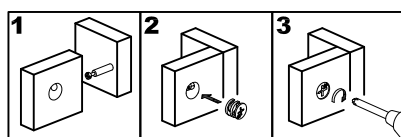
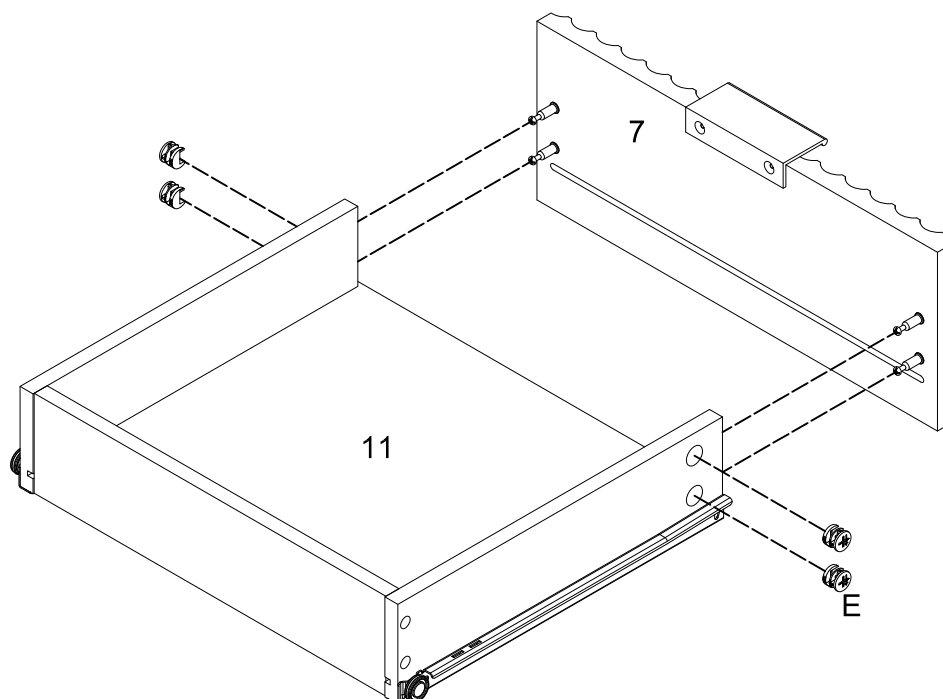


Step 11



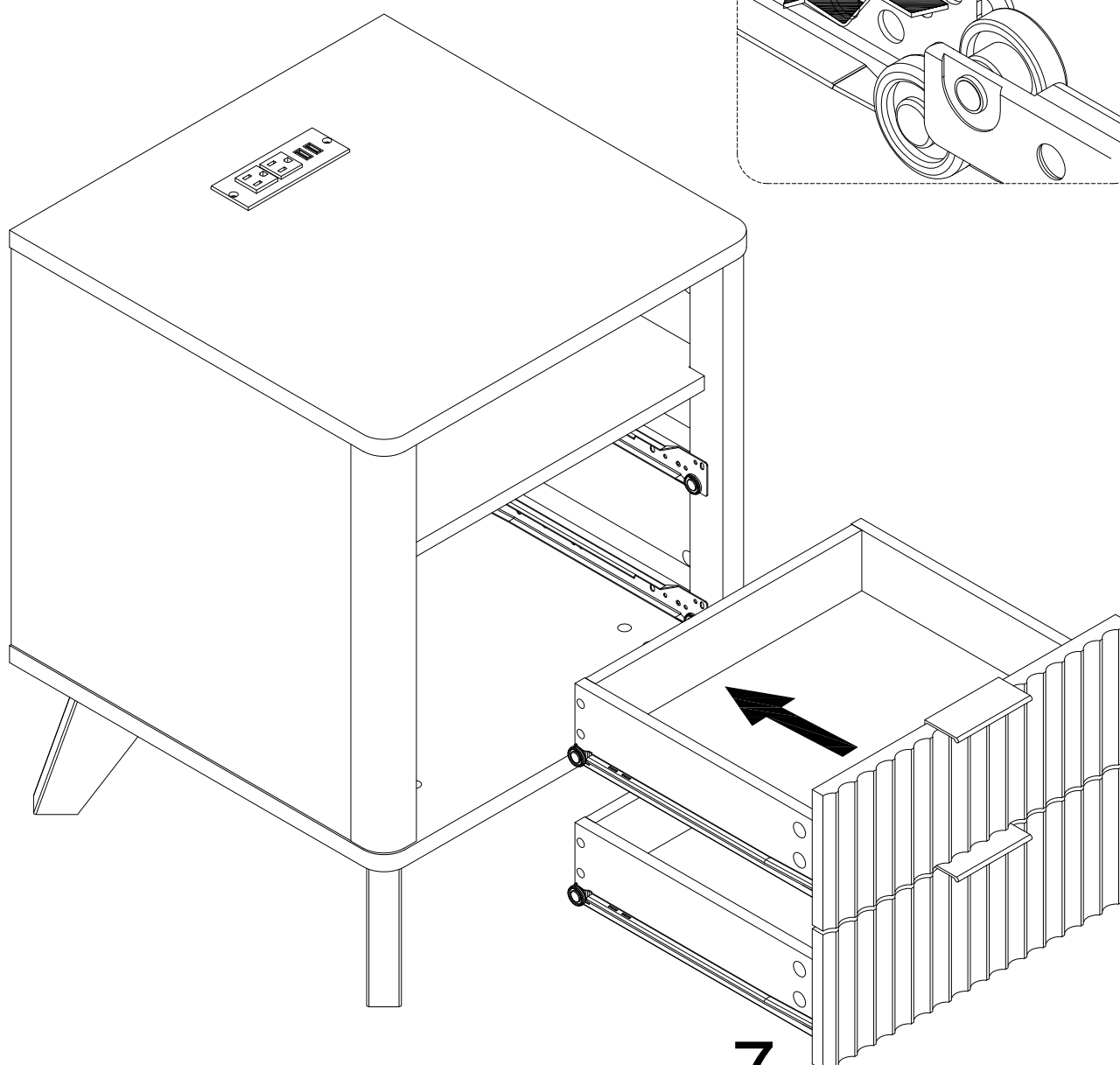
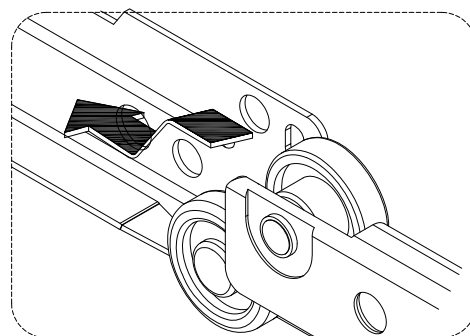
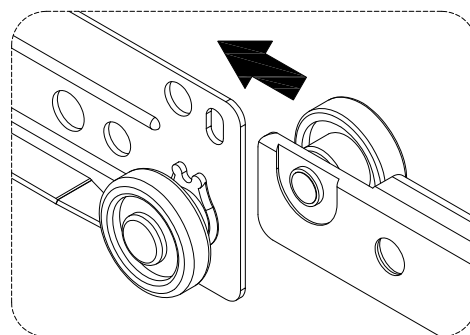
x2

Step 12

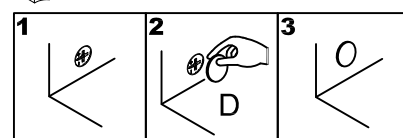


x2

Step 13



7



Step 14



Final Assembly