

THERMOSTATIC SHOWER Series INSTALLATION GUIDE



Model : 6368

◆ INSTALLATION CONDITION



1.Refer to the 《Standard Part List》 when unpacking ,
check all parts available .

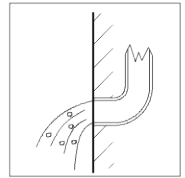
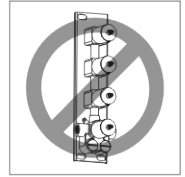
2.Do not disassemble mixer body by yourself.

3.Connect inlet hoses to supply valves.

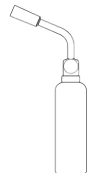
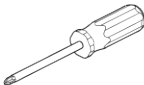
4.Make sure inlet pipes and supply valves have been
installed and cleaned, also ensure no impurities in
pipeline.

5.After installation , check all joints for leakages.

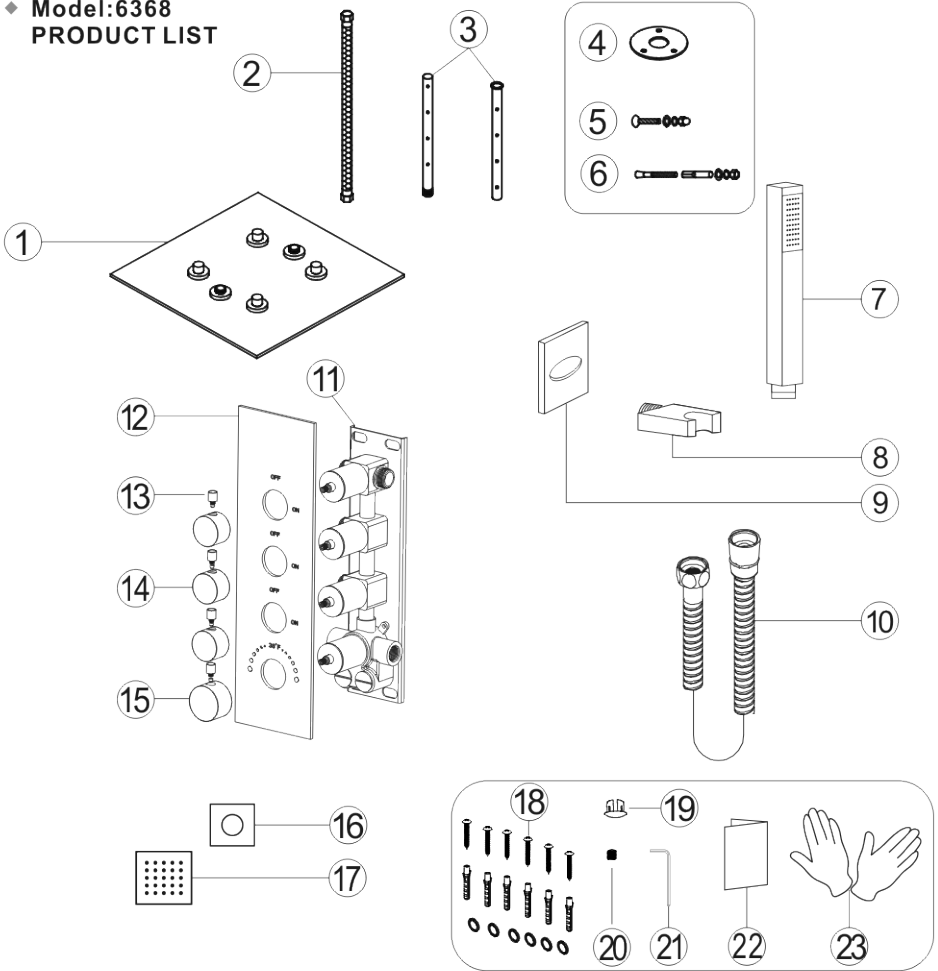
6.Suggest don't fit the faucet in the severely corrosive environments.



YOU MAY NEED:



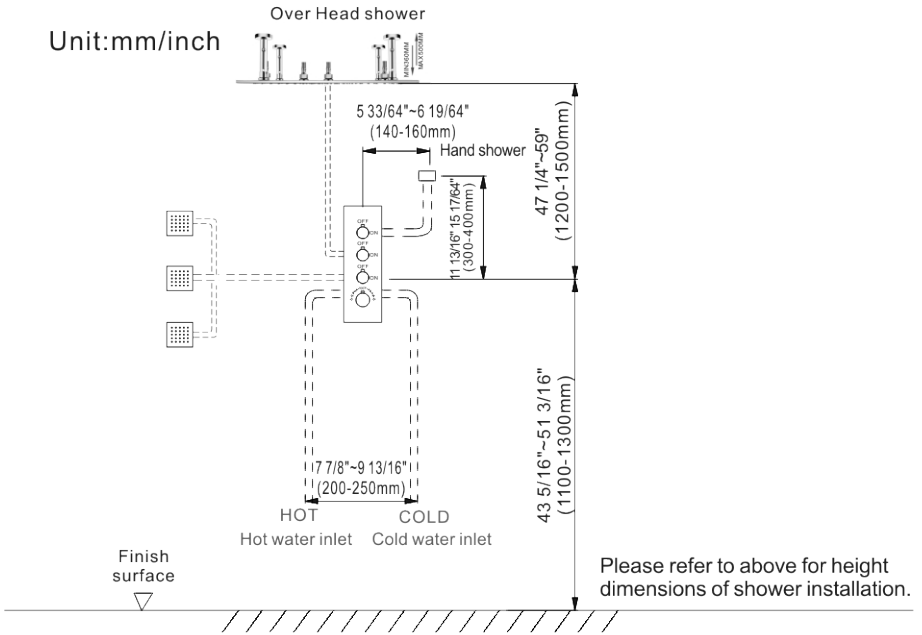
◆ Model:6368
PRODUCT LIST



No.	Part name	Qty	No.	Part name	Qty
1	Shower head	1	13	Water diverter rod	3
2	Shower head Hose	2	14	Water diverter	3
3	Fixed rod	4	15	Handle	1
4	Flange plate	4	16	Body jet cup	3
5	Screw	4	17	Body jet	3
6	Set screw	12	18	Valve gasket spare parts	6
7	Shower hand	1	19	Handle cup	1
8	Hand show holer	1	20	Screw	1
9	Holder cup	1	21	Wrench	1
10	Shower hose	1	22	Instruction manual	1
11	Main body	1	23	Gloves	2
12	Panel	1			

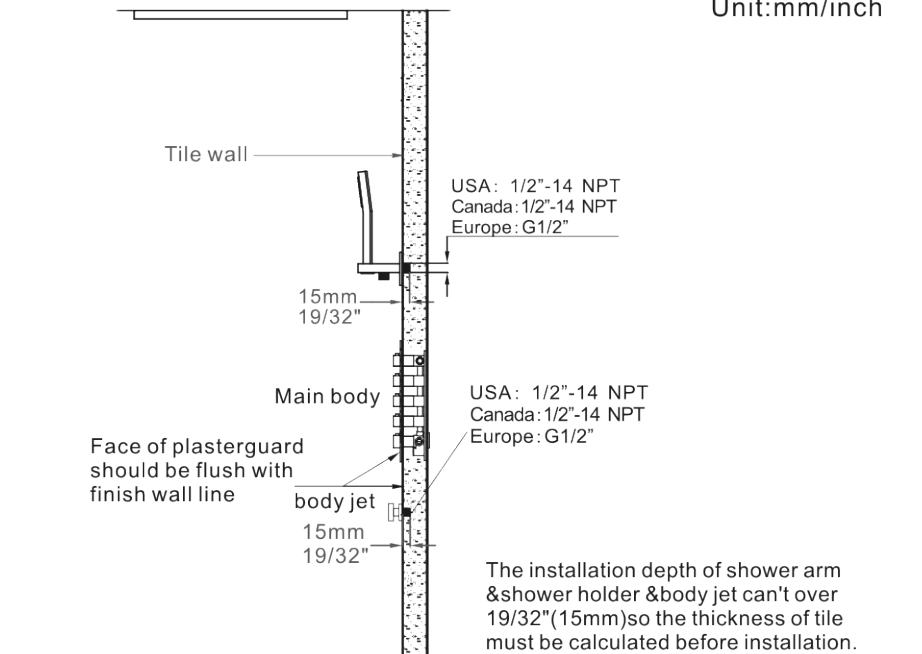
◆ **INSTALLATION SHOWER SET SIZE & WATER PIPE LINE REFERENCE**

Unit:mm/inch



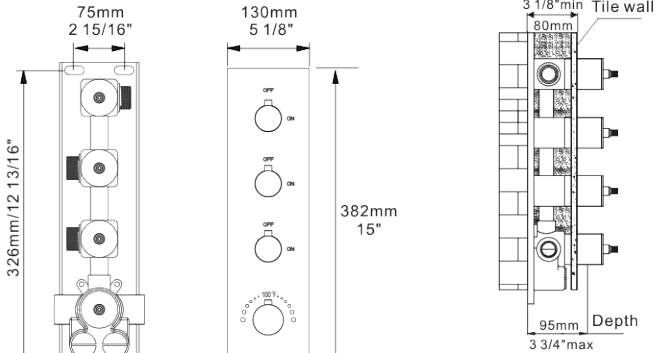
◆ **INSTALLATION DEPTH OF SHOWER ARM & SHOWER HOLDER & BODY JET**

Unit:mm/inch



◆ **INSTALLATION DEPTH OF MAIN BODY**

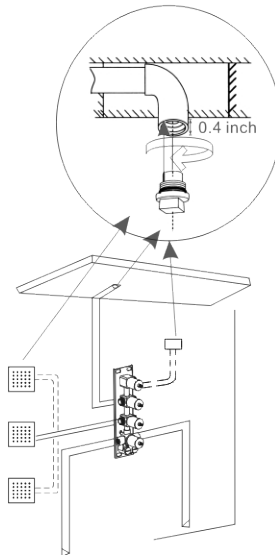
Unit:mm/inch



⚠ The depth of main body should be in the thickness range of wall tile

- 1: Including the thickness of ceramic tile is less than or equal to the thickness of valve 3 3/4" (95mm), so the thickness of tile must be calculated before installation.
- 2: Installation Main body depth not less than 3 1/8"(80mm)min and not more than 3 3/4" (95mm) Max, Otherwise, the panel cannot be installed.

◆ **WALL MOUNTED/CEILING MOUNTED INSTALLATION BEFORE TILING**

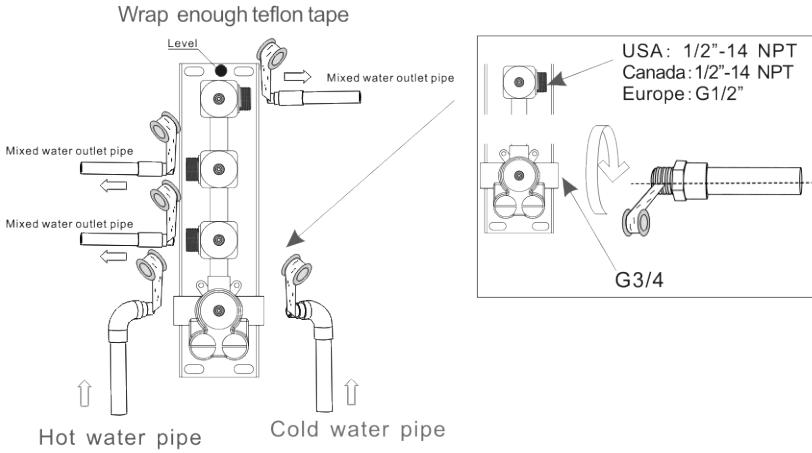


- 1: Recommend using Copper drop ear pipe elbow(NPT 1/2)
USA:1/14 NPT 2 -Canada:1/2"-14 NPT Europe:G1/2"

◆ MAIN BODY CONNECTING PIPE SCHEMATIC DIAGRAM

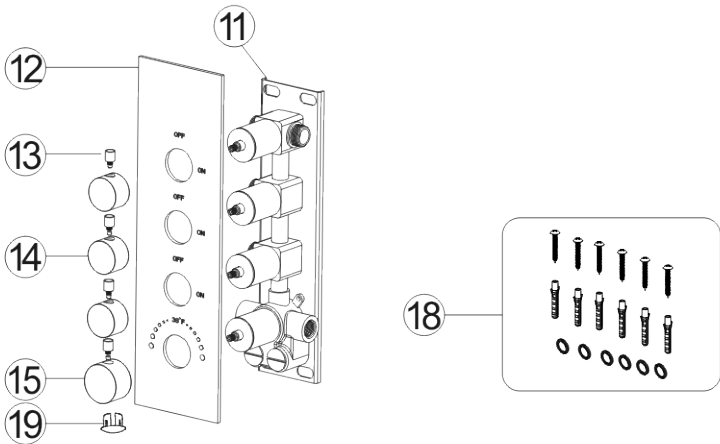


Warning: must install hot water and cold water inlet strictly as instructions.



1. As shown in the figure, the inlet and outlet pipes are pre-buried, pay attention to the correct direction of installing the pre-buried main body, and make sure that the mark level on the top of the installation box is facing upward.
2. Install the hot and cold water inlet pipes, Shower head and hand shower holder body jet pipes. Turn on the water source to test whether the left and right inlet pipes are tightly connected without leakage. After the test, adjust the flow switch to be on to test whether the mixed outlet pipe. The connection is tight and there is no leakage.

◆ MAIN BODY VALVE INSTALLATION



Use 18 Valve gasket spare parts and to fixed 11 Main body on the wall and then install 12 Panel 18 Hand 19 Hand cup and Hand screw 14 Water diverter 13 Water diverter rod in the correct order.

◆ Shower head installation

1 Showerhead X 1

2 Hose X 2

3 Fixed rod X 4

4 Flange plate X 4

5 Screw X 4

6 Setscrew X 12

Mark the installation position of the showerhead.

2

Mixed water

11 3/16" 284mm

11 3/16" 284mm

X12

3

Mixed water

11 3/16" 284mm

11 3/16" 284mm

φ8mm

Position drilling.

4

X 4

Sleeve the **4** flange plate into the **3** Fixed rod..

5

X

Y

Z

Hammer into the setting screw.

6

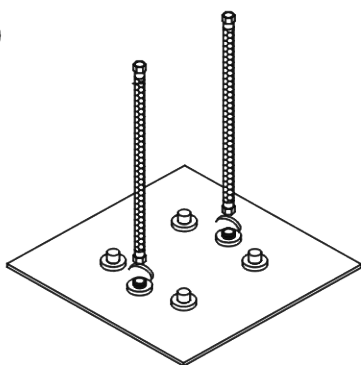
X

Y

Z

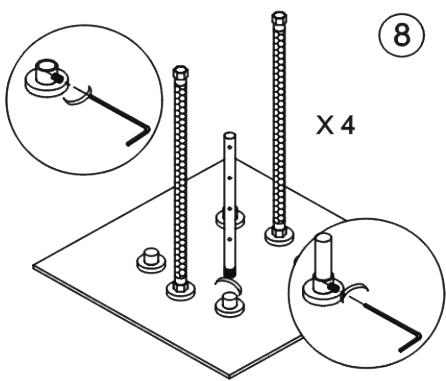
Fix the showerarm as above figure.

7

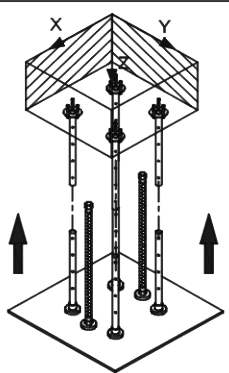


Connect the ② Hose inlet water pipe.

8

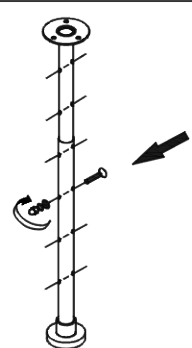


9

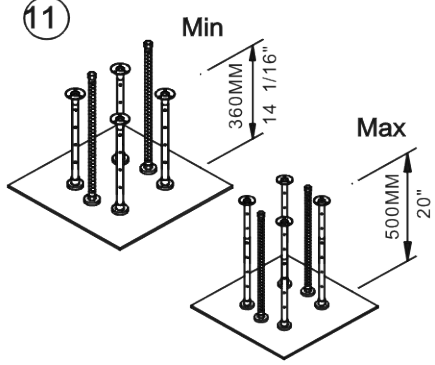


Install the showerhead according to the left figure, fix the showerarm with screw according to the right figure.

10

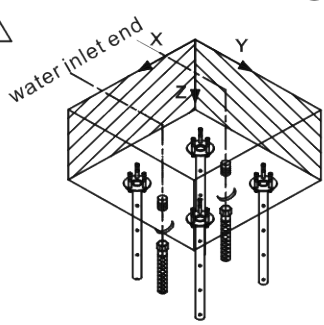


11



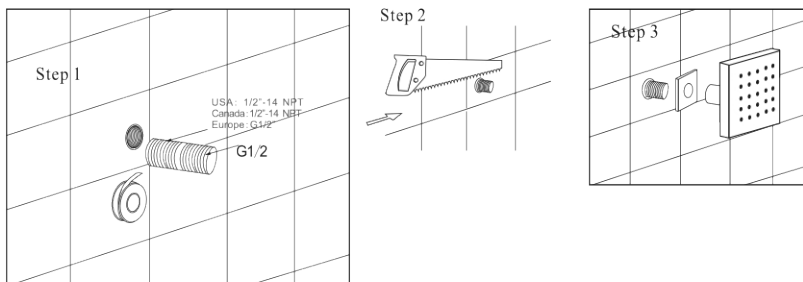
Adjust the showerhead height (refer to Figure ⑩ after confirming the height).

12



The water inlet end of two-function showerhead is connected with the control valve.

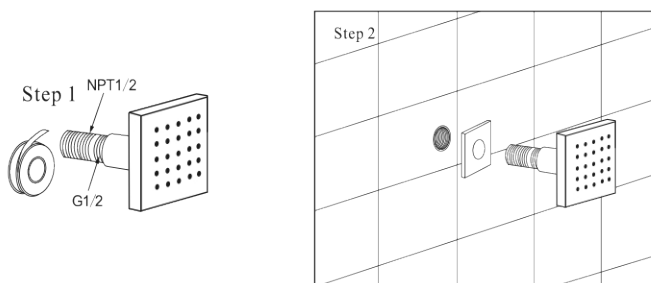
◆ INSTALLATION OF MASSAGE SHOWER



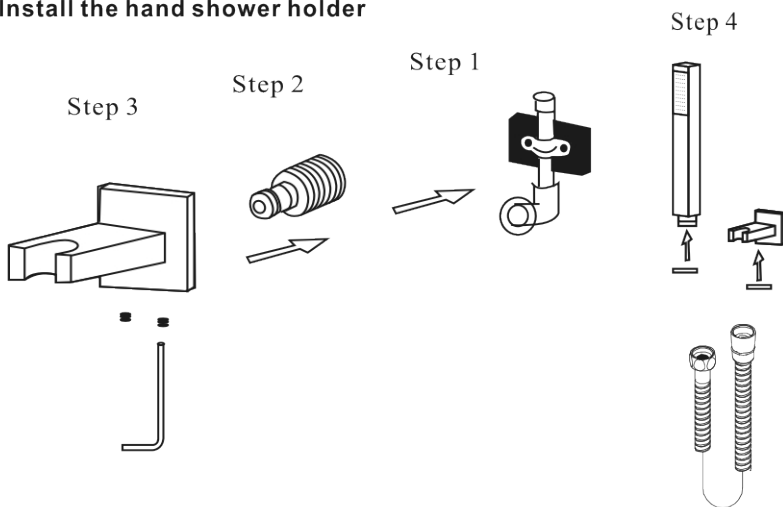
Step 1.Wrap the threaded pipe of NPT1/2 with Teflon tape and screw it into the wall.

Step2.Cut off excess part with a saw.

Step3.Put on the decoration cap, then screw the massage shower in.



◆ Install the hand shower holder



Step1.Screw the thread into the water pipe inside the wall.

Step2.Screw the main body into the thread.

Step3.Rotate and fix the body with the special-shaped wrench.

Step4.Connect hand shower and the hose.

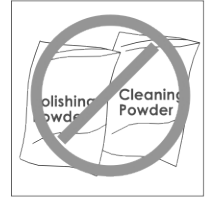
◆ CARE AND MAINTENANCE

In order to keep the mixer surface bright , please clean the mixer regularly.

Rinse faucet with clean water and wipe with soft cotton cloth.

Avoid using cleaning powder , harsh cleaning chemicals, brushes, and cloth with coarse surface to prevent scratching and corrosion.

Do not use acid cleaner to clean the faucet as it may cause surface corrosion of the faucet. If the faucet comes into contact with harmful acid substances, please rinse it with water immediately.



◆ IF A LARGE-SCALE CLEAN-UP IS NECESSARY, FOLLOW THESE PROCEDURES

1: Use clean water and soft cloth to remove dirt on the surface as much as possible.

2: Use one of the following cleaners to remove dirt on the surface

Mild liquid cleaner.

Colorless glass cleaner, powder cleaner which does not have abrasive function and can be dissolved completely.

Polish liquid which does not have abrasive function.

3: After cleaning, remove the cleansing agent with clean water completely and wipe with soft cotton cloth.

After-sales contact

Email: contactus24service@gmail.com

TEL: (303) 747-4321

