



Guide Book


- 2.4G remote control
- Light control switch
- Power display
- Music
- High and low speed
- Forward and backward
- Volume adjustment
- Wireless connection



 **WARNING:** The toy is to be assembled by an adult.
In unassembled state contain potentially hazardous sharp points, sharp edges and small part,so please keep out of baby’ s reach.

 **Warning:** Not to be used in traffic.

Parts List:(Name and Quantity)

													
Name		A	B	C	D	E	F	G	H	I	J	K	L
Quantity		1	1	1	2	2	4	1	1	2	2	1	1
M		N	O	P	Q	R	S	T	U	V	W	X	Y
Rear fender		Motor	Small plastic cover	Spanner	Rear axle	Big washer	Nut	M4x14 flat screw	M4×30 flat screw	M6×12 screw and M6 nut	R/C	Charger	Trunk fixing plate
2		2	2	2	1	6	4	8	6	each 2	1	1	1
Z-1		Z-2											
Small washer		Cotter pin											
1		1											

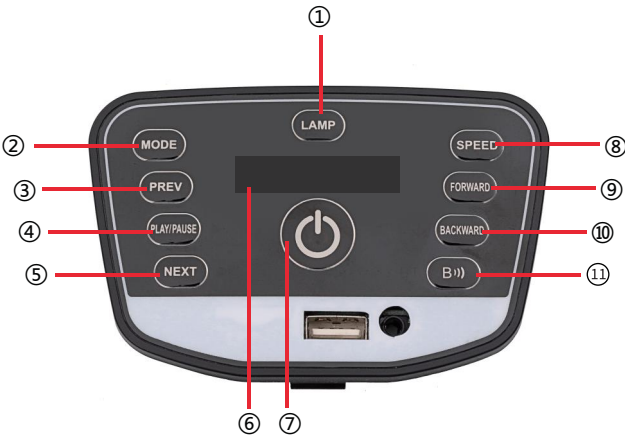


Product Specifications:

Name	Specification
Battery	12V or 24V
Suitable age	37-95 months
Loading capacity	40kg
Product size	120*78*69cm
Speed	3-5 km/h
Charge/Use time	charge 8-12h, use 1-2h
Charger	12V or 24V
Remote control	AAA1.5V(not including)

The above parameters are selected by the customer, and the specific parameters shall be subject to the actual sample.

Function



Button function	
1. Light control switch	7. Power switch
2. Mode switch	8. High/low speed switch
3. Music switch/Volume -	9. Forward
4. Play/pause	10. Backward
5. Music switch/Volume +	11. Wireless connection
6. Power display	

Instruction for 2.4G Remote Control

Features
-Supply Voltage: 2 X 1.5V
-Frequency: 2.4GHz

Button Description
-Forward: Direct your car to move forward.
-Backward: Direct the ride on car to move backward.
-Paring: Pair your car with remote control.
-Left: Direct your car to turn left.
-Right: Direct your car to turn right.
-Speed: Adjust the speed of our car’s movement as low, moderate or high.
-Brake: Immediately stop your car and lock your car until released.



Pairing Instruction
1. Turn on the power of your car, press and hold the pairing button until the speed indicator light turns on without flashing.
2. Release the pairing button, and the speed indicator light will turn off.
3. If the speed indicator light turns on again, the pairing is successful; if not, please repeat step 1 and 2.
4. No more pairing is needed in next use, once pairing is successful.

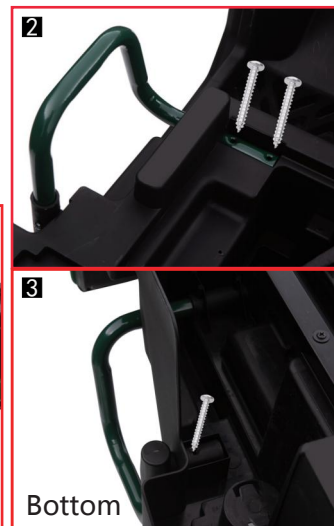
Remote control battery installation

Open the back cover of the remote control and insert two triple A batteries (AAA 1.5V). Please pay attention to the polarity. Close the back cover and tighten the screws when the LED light is on, indicating battery installed properly. Battery needs to be replaced when the LED light dims or blinks.

Installation Order Diagram

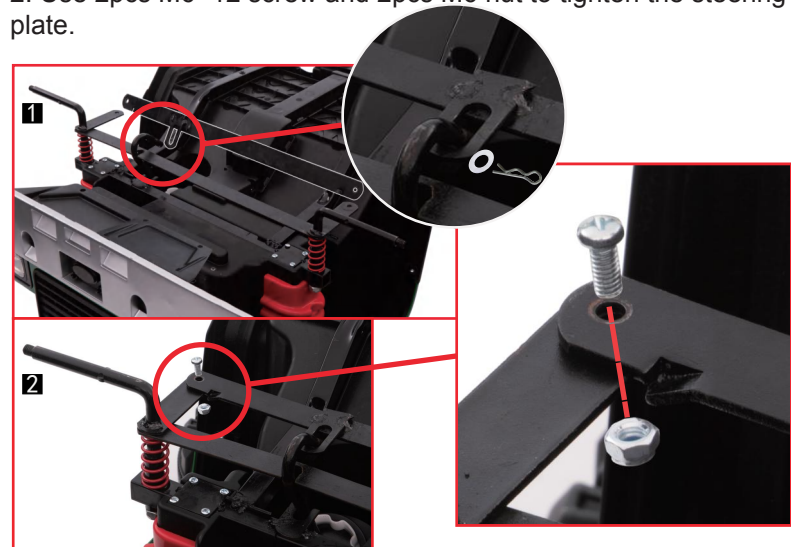
1. Iron handlebar assembly

1. Insert iron handlebar into the reserved place on the car body according to the arrow.
2. Use 2pcs M4x30 flat screw to tighten. The same way for the other side.
3. Turn the car over, use 1pcs M4x30 flat screw to tighten. The same way for the other side.



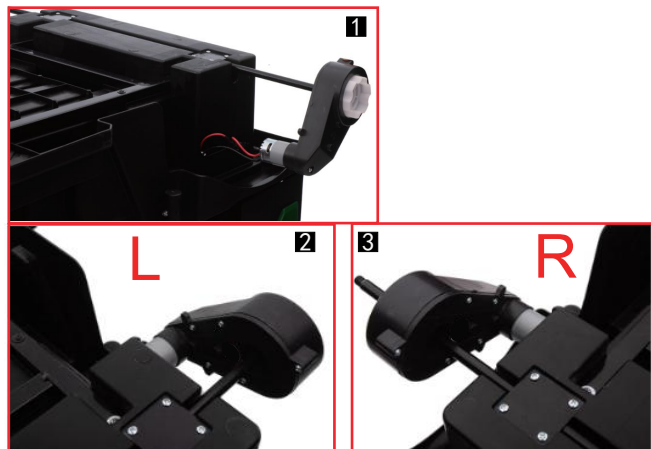
2. Steering plate assembly

1. Insert direction lever into the hole of steering plate, then add 1pcs small washer to the direction lever. At last, insert 1pcs cotter pin into the hole of direction lever to tighten.
2. Use 2pcs M6x12 screw and 2pcs M6 nut to tighten the steering plate.



3. Motor assembly

3. Insert the rear axle into the body, then install the motor correctly according to L/R label on the motor and on car body.



4. Rear wheel assembly

4. Add rear wheel, 1pcs washer one by one, then use spanner to tighten the nut. At last, insert wheel cover into the rear wheel. The same way for the other side.



5. Front wheel assembly

5. Add 1pcs washer, front wheel, 1pcs washer one by one, then use spanner to tighten the nut. At last, insert wheel cover into the rear wheel. The same way for the other side.



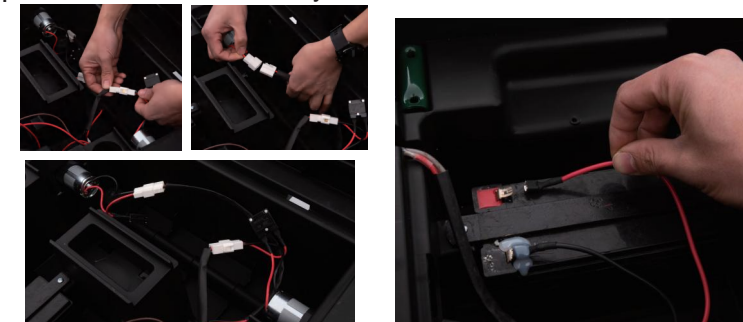
6. Steering wheel, Handlebar decoration, windshield assembly

1. Unscrew the steering wheel and insert it into the direction lever, then use screw and nut to tighten.
2. Insert the handlebar decoration into the reserved hole on the platform.
3. Insert the windshield into the reserved hole on the car.



7. Motor line, battery line connection

1. Connect the motor line connector.(no need to distinguish L/R)
2. Connect the red battery line to the red terminal.



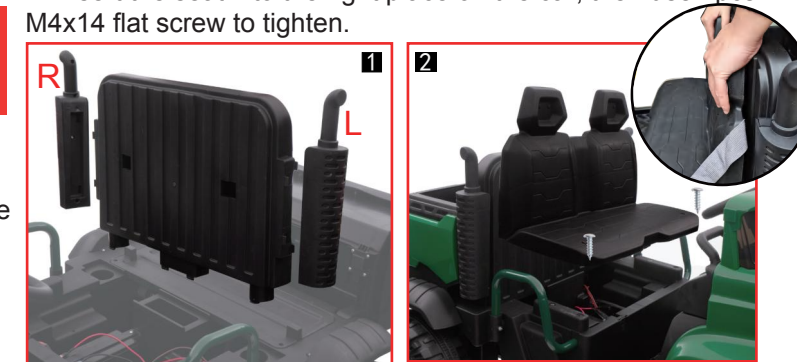
8. Small plastic cover, trunk fixing plate, rear fender assembly

1. Insert the small plastic cover into the reserved place on the car.
2. Remove the trunk fixing plate from the trunk, then insert it into the right place on the car, use 2pcs M4x14 flat screw to tighten.
3. Insert the rear fender into the reserved place on the car, then use 4pcs M4x14 flat screw to tighten.



9. Seat plate, exhaust pipe, seat assembly

1. Insert the seat plate, exhaust pipe(distinguish L/R) into the reserved hole on the car.
2. Insert the seat into the right place on the car, then use 2pcs M4x14 flat screw to tighten.



Warnings

For children's safety, please read these carefully.
Assembly and adjustment must be done by adults, keep children away.
Keep children under 36 months away from small parts.
Safe belt is a must when children playing. Do not be close to fire.
Adult must teach how to play it and never leave children alone for playing.
Do not stand up or play when children are stepping on foot pedal.
Battery must be charged by adults only. Please charge it first before use.
Keep children away from plastic bag, or suffocation may occur.
Only use spare parts which provided by manufacturer.
Charger is not a toy for playing.
Maximum loading capacity is 40KG. Do not overload.
Suitable age: 37-95 months.

Safety use

Do not play in the street, road, slope or ditch.
Do not change the line or add electric device to the car.
Play the car in the dry area, not wet. Keep away from fire, or may damage the line.
One or two riders one time only. Do not overload.
Maximum capacity is 40KG.
Turn power off if no use. If long time no use, unplug battery line.
Check battery, charger and other spare parts regularly.
If any problem, please fix it before playing.

Charging notification

For the first use, please charge 8-12 hours, or will damage the battery.
Plug charger DC line into charge hole first, then plug charger into socket.
Car can not be played when it charging.
Every time it charged, do not charge more than 20 hours.
It is normal that charger and battery warm (under 60°) during charging.
Do not charge if plug is wet, or will occur short-circuited.
Only use charger provided by manufacturer, or will damage charger and battery or occur short-circuited.
If long time no use, please charge 1 time per month at least.

Charging steps are as follows:

- Step 1: The charging hole is under the seat.
- Step 2: Put the charger plug into the plug hole.
- Step 3: Connect the charger to the power socket.



Warning: Car must be charged by adults only. Car is useless during charging

Maintenance and Service

- Check battery, charger and other spare parts regularly. If there is any problem, please fix it before playing.
- Use lubricating oil to care iron parts. Keep car away from fire and avoid long-time direct sunlight. Park it on the even place, do not reversal or gradient.
- Park it indoor and cover it with waterproof cloth.
- Keep car away from fire, like stove or heater, or plastic may
- Keep away from flammable things, or may occur fire accident.
- Charge it after use and must be done by adults only. If long time no use, please charge it 1 time per month, in order to maintain battery.
- Clean the vehicle with a dry cloth only. Do not use chemical solvent to wipe plastic parts. Do not wash it with water or play it when raining or snowing. Water will damage motor, electric system or battery.
- Please turn power off after each use.
- Only use charger provided by manufacturer.
- Do not change car's structure or electric line. Check job request some skills or under specialist's guidance.