

## Features

- Catalyzed conversion varnish provides a durable moisture-resistant finish
- Two doors and three drawers
- Frameless construction with full-overlay doors and drawers
- Three-way adjustable slow-close door hinges for easy cabinet access
- Full-extension 18" (457 mm) depth drawers with soft-close undermount slides for smooth opening
- Solid wood drawers with dovetail construction
- Legs offer the polished look of furniture in the bathroom
- Customize your storage with optional accessories such as shelves, trays, drawer dividers, and medicine cabinets (sold separately)

## Material

- Solid wood and veneers
- Wood is a living material, and its beauty is enhanced by natural variations in grain, color, and pattern. No two pieces of wood are exactly the same, and the color will change with age, temperature, and exposure to light
- The nature of wood grain can cause variations in stain depth. Our expert craftspeople hand-apply the stain to blend these variations

## Required Products/Accessories

- K-20000 20-1/2" rectangular undermount bathroom sink
- K-28255 Silestone® 61" quartz vanity top with two rectangular cutouts
- K-28264 Silestone® quartz 49" backsplash
- K-28265 Silestone® quartz 61" backsplash
- K-5448 Bathroom Vanity Top - Back splash
- K-5451 Bathroom Vanity Top - Side Splash
- K-99681 Electrical outlets for KOHLER Tailored® vanities
- K-99682 General storage package for KOHLER Tailored® vanities
- K-99683 Makeup storage package for KOHLER Tailored® vanities
- K-99684 Drawer divider package for KOHLER Tailored® vanities
- K-99686 Cabinet knob
- K-99689 3" cabinet pull
- K-99738 Appliance Tray

## Recommended Products/Accessories

- K-5433 61" vanity top with double Verticyl® rectangular cutout
- K-5441 Bathroom Vanity Top
- K-5461 61" vanity top with double Verticyl® rectangular

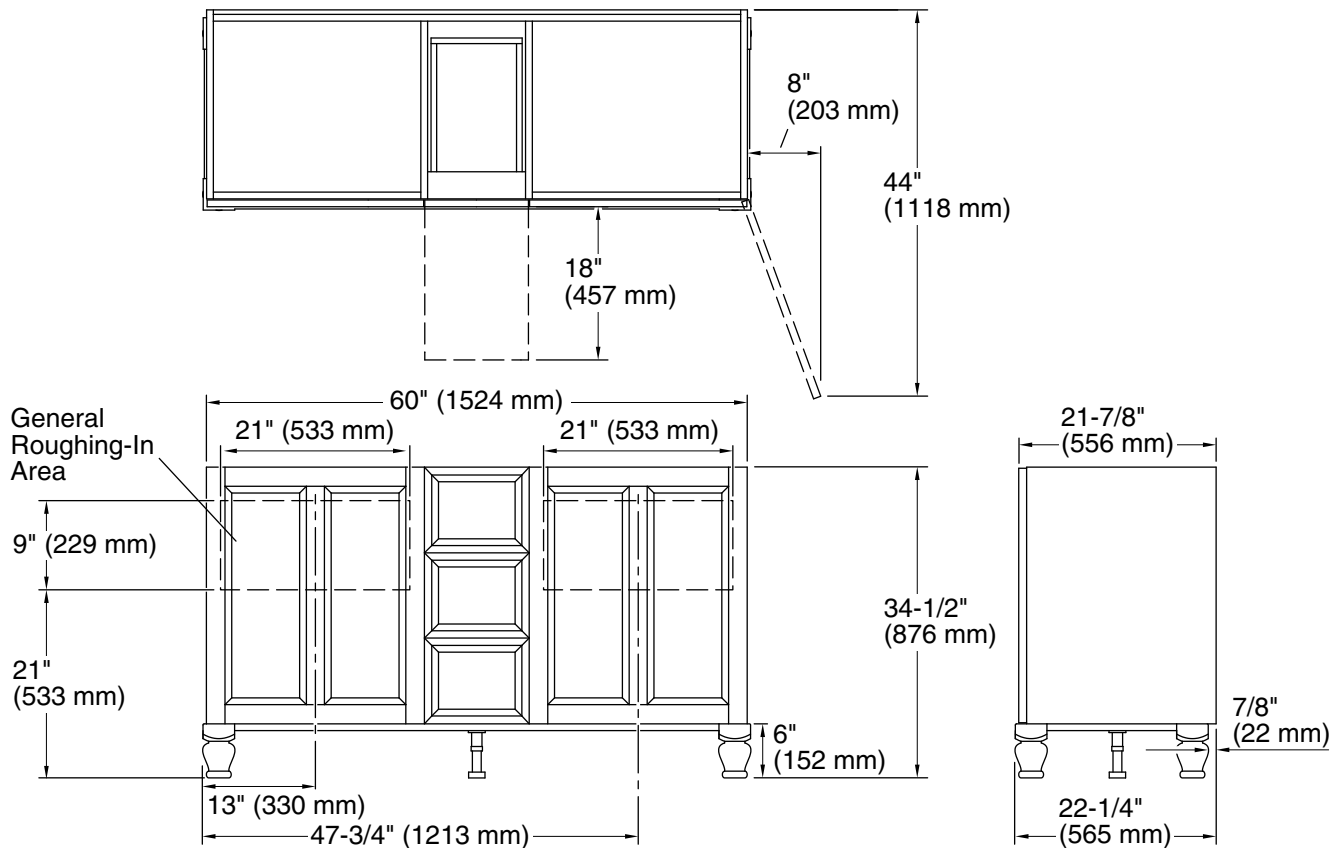


## Codes/Standards

EPA TSCA Title VI/CARB P2

## KOHLER® One-Year Limited Warranty

See website for detailed warranty information.



## Technical Information

All product dimensions are nominal.

Vanity type: Standard

## Notes

Install this product according to the installation guide.

Decorative cabinet hardware is not supplied. Refer to the KOHLER bath accessories line for recommended cabinet hardware to complement your vanity.

Select the type of fastener based upon the wall material. Two 250 lb (113.4 kg) minimum load bearing fasteners are recommended.