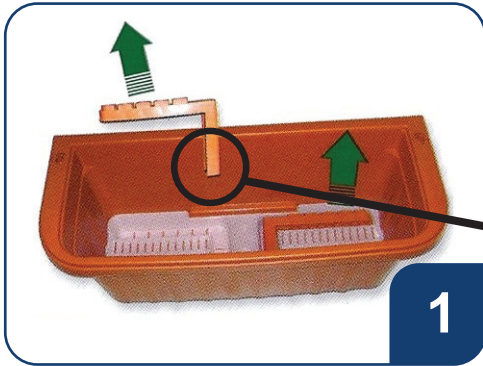
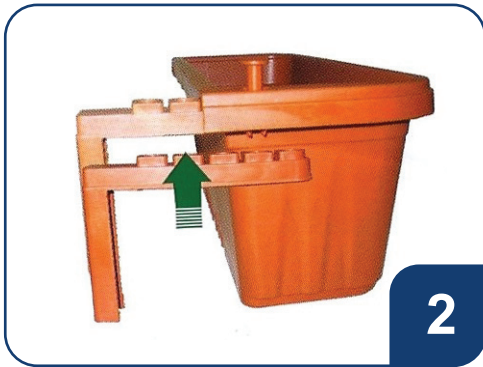


# 24" Adjustable Railing Planter

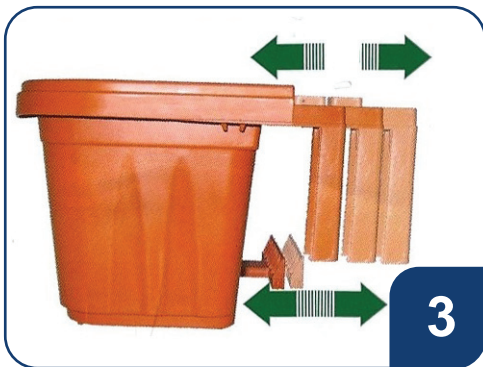
## Installation Instructions



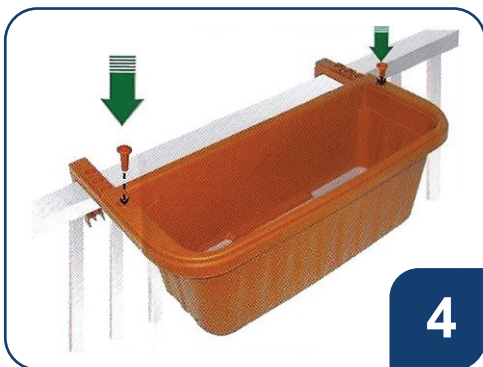
Remove railing brackets and pins from drainage tray:  
2x railing brackets, 2x pins  
**IMPORTANT:** You will find locking pins nested in railing brackets.



Attach railing bracket from below planter sides at desired width.



Railing brackets can be adjusted to fit a railing up to 4". Adjust lower arm to level planter.



Secure planter to the railing and insert locking pins. You are now ready to plant.  
**IMPORTANT:** You will find locking pins nested in railing brackets.