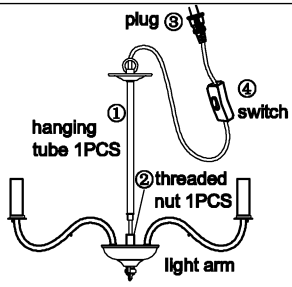
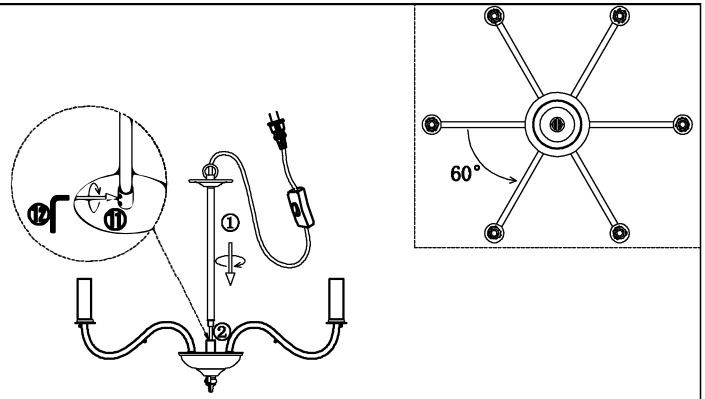


# Installation & Assembly

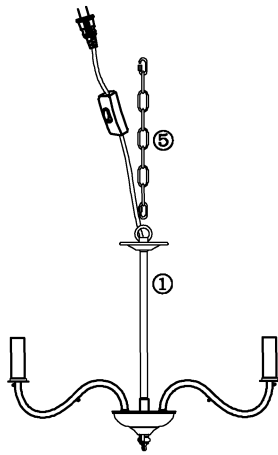


⑧	crystal dish 6PCS	! X3PCS
⑨	crystal chain 7PCS	! X9PCS
⑩	crystal chain 6PCS	! X9PCS
⑪	grub screw 2PCS	! X1PCS
⑫	hex key 1PCS	
⑬	hook 2PCS	

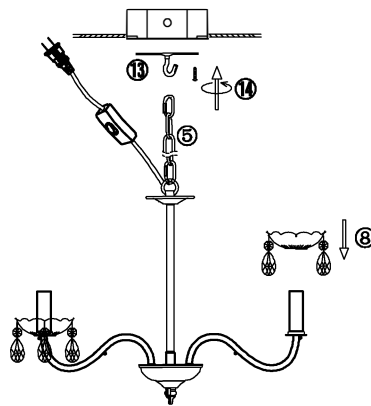


1. Adjust the light arm of the fixture to suitable position like picture shown.
2. Rotate to install the tube 1 to the fixture.
3. Rotate to adjust the mini holes of the tube face to the light arms, after that fasten the tube with grub screw 11 by rotate hex key 12.

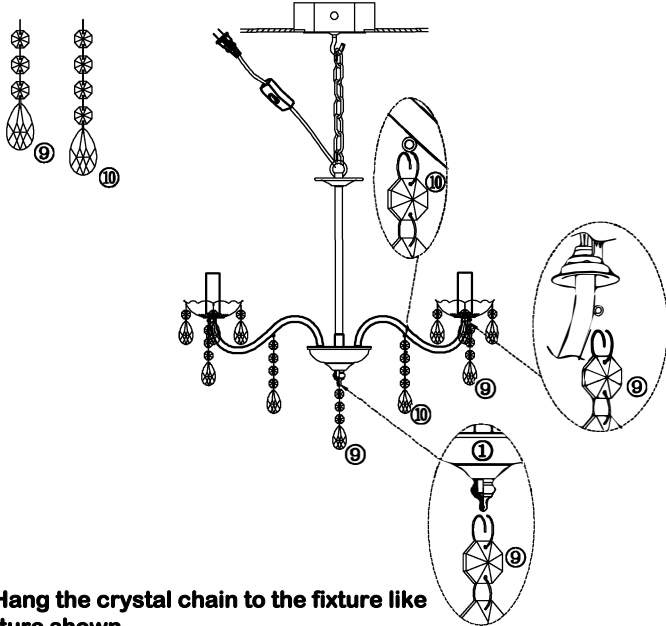
⑤	chain 1PCS	
⑥	crystal chain 6PCS	
⑦	crystal chain 6PCS	



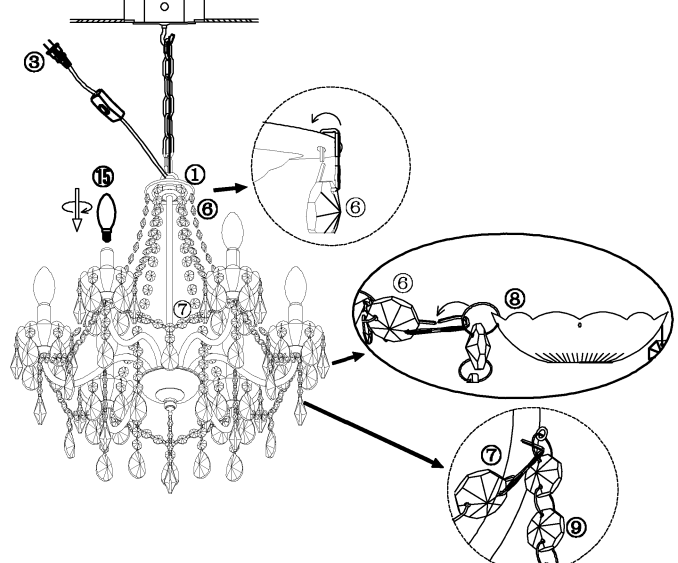
4. Install the chain 5 to the fixture.



5. Install all the hook to the ceiling junction box with screw 14.
6. Hang the chains to the hook 13.
7. Put the crystal dish 8 to the bulb holder.



8. Hang the crystal chain to the fixture like picture shown.
9. Hang the crystal chain to the arm of the fixture.



10. Hang the crystal chain 6 between the hole of tube 1 to the crystal dish 8.
11. Install the crystal chain 7 between the holes for the crystal chain 9.
12. Install the bulb 15 and plug in the switch.

Please read carefully before installation!!!

Note: Please make sure that the electricity is powered off during installation !  
Only a professional electrician should install this kind of product !