



24" x 32" LED Vanity Mirror



FEATURES

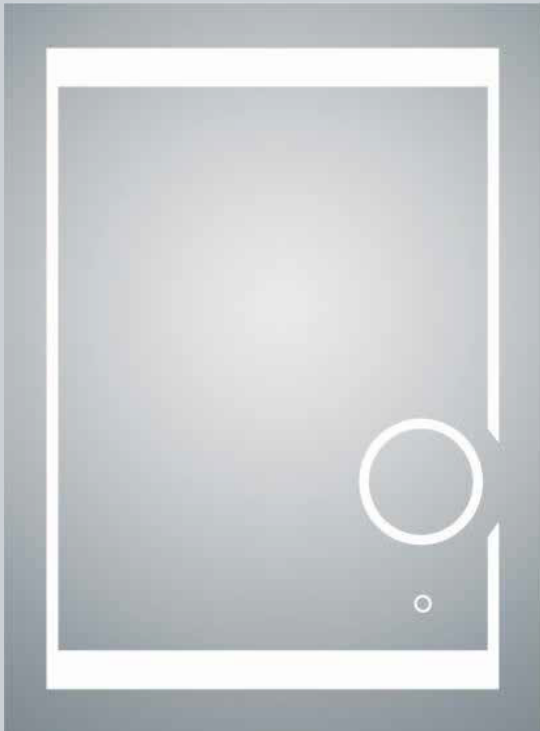
- Integrated touch sensor control with memory
- Energy efficient LED lighting 3000-6000K
- CRI 90+
- Integrated Defogger

CONSTRUCTION

- Quality polished edge mirror
- Single phase wire installation, silver backed, copper free
- Construction for surface mounting
- Includes installation hardware

CERTIFICATION

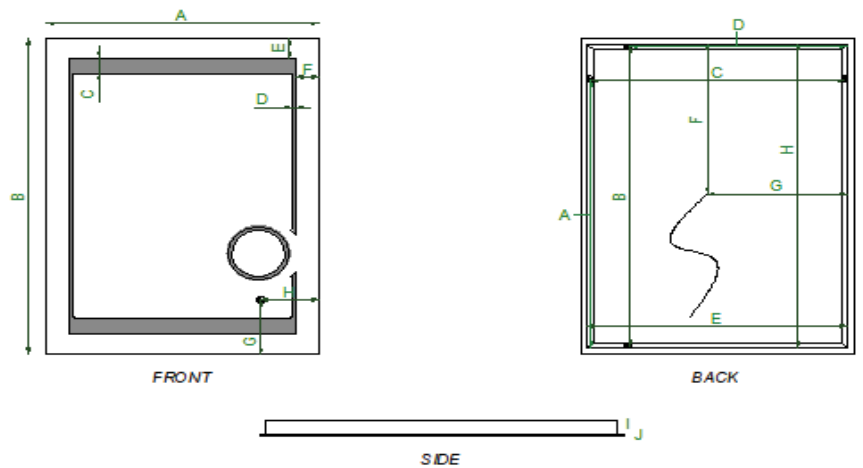
- Conforms to UL Std. 962
- Cert. to CSA Std. C22.2 No.250.0-0
- ETL Intertek 5015245



TECHNICAL INFORMATION

Size	24"x32"
MPN	MR015-2432
CCT	3000 - 6000K
CRI	>90
Lumens	2340 LM
Input Voltage	100-120VAC
LED/ Meter	2.6
Wattage	50W

DIMENSIONS



FRONT & SIDE

A	B	C	D	E	F	G	H	I	J
24	32	1 9/16	3/8	2	2	5 1/2	5 1/2	1 3/8	3/16

BACK

A	B	C	D	E	F	G	H
27 1/16	30 5/16	22 5/16	19 1/8	22 13/16	15 7/16	11 7/16	30 13/16

