

INSTRUCTION MANUAL

FOR WINE COOLER/BEVERAGE COOLER

MODEL: JC-85C / JC-145C



This manual contains important information including safety and installation instructions of the appliances. Please read it carefully before use and follow all safety information & instructions. It is recommended to keep this manual for easy reference so that you can be familiar with the operation of the appliance.

CONTENTS

WARNING-----	2
IMPORTANT SAFETY INSTRUCTIONS-----	3
INSTALLATION INSTRUCTIONS-----	4
UNPACKING AND INSTALL THE DOOR HANDLE -----	4
TEMPERATURE SETTING-----	6
CARE & MAINTENANCE-----	9
TROUBLESHOOTING GUIDE-----	10
WARRANTY-----	11

WARNING

- To prevent damaging the door gasket, make sure to have the door all the way open when pulling shelves out of the rail compartment.
- The appliance must be positioned so that the plug is accessible. Release the electric cord. Move your cabinet to its final location. Do not move your Cabinet while loaded with beverages and wine. You might distort its body. The Beverage Cooler should be installed in a suitable place in order to avoid touching the compressor with hands.
- This appliance is not intended for use by persons (including children) with reduced physical, sensory or mental capabilities or lack of experience and knowledge, unless they have been given supervision or instruction concerning use of the appliance by a person responsible for their safety.
- If the supply cord is damaged, it must be replaced by manufacturer of its Service agent or a similarly qualified person in order to avoid a hazard.

PLEASE DON'T TRY TO PLUG INTO OR EXTENSION THE CABLE IN ANY CASE.

IMPORTANT SAFETY INSTRUCTIONS

⚡WARNING⚡	To reduce the risk of fire, electrical shock, or injury when using your appliance, follow these basic precautions:
<ul style="list-style-type: none">• Read all instructions before using the Beverage Cooler.• DANGER or WARNING: Risk of child entrapment.• Child entrapment and suffocation are not problems of the past. Junked or abandoned appliances are still dangerous even if they will “just sit in the garage a few days”.• Before you throw away your old Beverage Cooler: Take off the door. Leave the shelves in place so that children may not easily climb inside.• Never allow children to operate, play with, or crawl inside the appliance.• Never clean appliance parts with flammable fluids. The fumes can create a fire hazard or explosion.• Do not store or use gasoline or any other flammable vapors and liquids in the vicinity of this or any other appliance. The fumes can create a fire hazard or explosion. Do not store explosive substances such as aerosol cans with a flammable propellant in this appliance.• WARNING: Keep ventilation openings, in the appliance enclosure or the built-in structure, clear of obstruction;• WARNING: Do not use mechanical devices or other means to accelerate the defrosting process, other than those Recommended by the manufacturer;• To avoid a hazard due to instability of the appliance, it must be fixed in accordance with the instructions.• WARNING: Do not damage the refrigerant circuit;• WARNING: Do not use electrical appliances inside the food storage compartments of the appliance, unless they are the type recommended by the manufacturer.• If the refrigerant of these appliances is R600a, Flammable and explosive articles should not be put in or near the cabinet, to avoid the fire or explode caused. <p>-Save these instructions-</p>	

UNPACKING AND INSTALL THE DOOR HANDLE

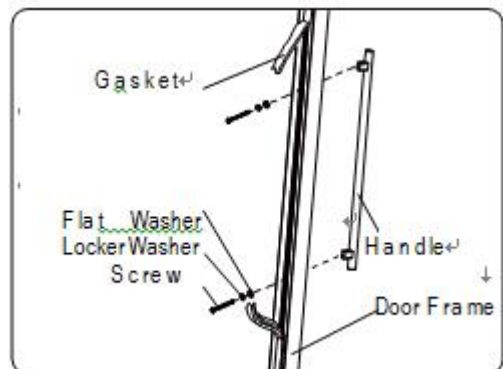
Remove the exterior and interior packing materials.

Install the door handle provided with the appliance by the following steps:

Step 1 — Remove the gasket at the inner side of the door to expose the two screw holes.

Step 2 — Install the handle tightly with the screws and washers provided.

Step 3 — Tidy and restore the gasket.



INSTALLATION INSTRUCTIONS

➤ **Before Using Your Beverage cooler**

- Remove the exterior and interior packing.
- Before connecting the Beverage cooler to the power source, let it stand upright for approximately 24 hours. This will reduce the possibility of a malfunction in the cooling system from handling during transportation.
- Use a soft cloth to clean the interior surface with lukewarm water.
- This appliance is intended to be used in household and similar applications such as
 - Staff kitchen areas in shops, offices and other working environments;
 - Farm houses and by clients in hotels, motels and other residential type environments;
 - Bed and breakfast type environments;
 - Catering and similar non-retail applications.
- When disposing your appliance, please choose an authorized disposal site.

➤ **Installation of Your Beverage cooler**

- This appliance is designed to be for freestanding installation or built-in (fully recessed) (Refer to sticker location on the back of this appliance).
- **This appliance is intended to be used exclusively for the storage of beverages.**
- Place your Beverage cooler on a flat floor that is strong enough to support it when it is fully loaded. To level your Beverage cooler, adjust the front leveling leg at the bottom of the Beverage cooler.
- This appliance is using flammability refrigerant. So never damage the cooling pipework during the transportation. Locate the Beverage cooler away from direct sunlight and sources of heat (stove, heater, radiator, etc.). Direct sunlight may affect the acrylic coating and heat sources may increase electrical consumption. Extreme cold ambient temperatures may also cause the unit not to perform properly.
 - Avoid locating the unit in moist areas.
- Plug the Beverage cooler into an exclusive, properly installed-grounded wall outlet. Do not cut or remove the third (ground) prong from the power cord under any circumstances. Any questions concerning power and/or grounding should be directed toward a certified electrician or an authorized Products service center.

➤ **Attention**

- Store beverages and wine in sealed bottles;
- Do not overload the cabinet;
- Do not open the door unless necessary;
- Do not cover shelves with aluminum foil or any other shelf material which may prevent air circulation;

- Should the Beverage cooler be stored without use for long periods, it is suggested to leave the door ajar to allow air to circulate inside the cabinet after careful cleaning, avoiding possible formations of condensation, mold or odors.

➤ **Ambient Room Temperature Limits**

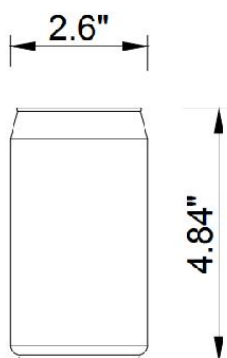
This appliance is designed to operate in ambient temperatures specified by its temperature class marked on the rating plate.

Class	Symbol	Ambient Temperatures range (°C / °F)
Extended Temperate	SN	+ 10°C / 50 °F to + 32°C / 89.6°F
Temperate	N	+ 16°C / 60.8°F to + 32°C / 89.6°F
Subtropical	ST	+ 16°C / 60.8°F to + 38°C / 100.4°F
Tropical	T	+ 16°C / 60.8°F to + 43°C / 109.4°F

Description of product model

Model	Description
JC-85C	83 cans single zone beverage cooler
JC-145C	149 cans single zone beverage cooler

The standard can as below:



The stated loading capacity is based on the standard-size soda drink with 2.6" in diameter and 4.84" in height.

STORAGE

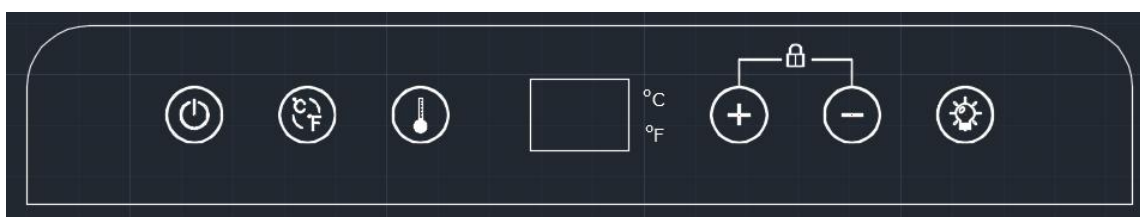
- To prevent damaging the door gasket, make sure to have the door opened fully all the way before pulling the shelves out.
- Please store beverages and wine in sealed bottles.
- Should the beverage cooler be left empty for long periods it is suggested that the appliance is unplugged, and after careful cleaning, leave the door ajar to allow air to circulate inside the cabinet in order to avoid possible condensation, mold or odors forming.
- Recommended Temperatures for chilling/storage your beverage and wine.

Beverage	4-6 °C / 39-42.8°F
Dry/White Wines	9-14°C / 48.2-57.2°F
Sparkling Wines	5-8°C / 41-46.4°F

OPERATING YOUR BEVERAGE COOLER AND SETTING THE TEMPERATURE CONTROL

FOR JC-85C /JC-145C Beverage Cooler

➤ Control System Instruction



- Power switch : After the unit is power on, press for 3 seconds to turn on or off the unit.
- Touch the button , you can interchange the Fahrenheit (°F) and Celsius(°C) display
- Temperature setting button : Press before adjust temperature. When press it first time, the display flashes and shows the setting temperature. After 5 seconds it shows the measured interior temperature. Press to increase the setting temperature and press to decrease the setting temperature.
- Display window: 2-digit LED display to show the setting temperature or actual interior temperature.
- Light button : Press to turn on or off.
- Lock screen function: If there is no any operation with digital control for 3 minutes, it will be locked automatically. Press and at the same time for 3 seconds to unlock.

➤ Setting The Temperature Controls

- You can set the temperature as you desire by pushing the “+”or “-”button. When you push the two buttons for the first time, the LED readout will show the original temperature set at previous time.
- The temperature that you desire to set will increase 1°C if you push the “+”button once, on the contrary the temperature will decrease 1°C if you push the “-” button once.
- To view the “set” temperature anytime, press and hold the corresponding button for approximately 5 seconds, the “set” temperature will temporarily “flash” in the LED display for 5 seconds.
- After the unit is unplugged, the system will return to default setting temperature, which is set by the factory. The default setting temperatures are as below:

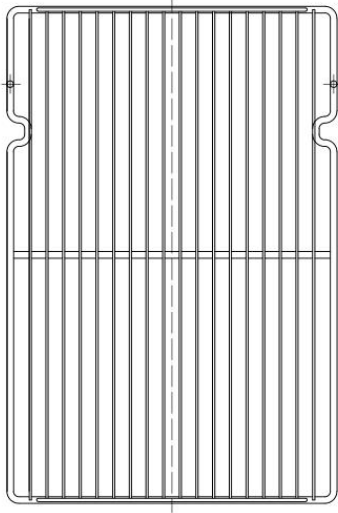
Model	Temperature range
JC-85C BEVERAGE COOLER JC-145C BEVERAGE COOLER	The temperature setting can be adjusted from 2°C/35.6°F to 10°C/50°F. The temperature preset at the factory is 6°C/42.8°F.

➤ **Attention**

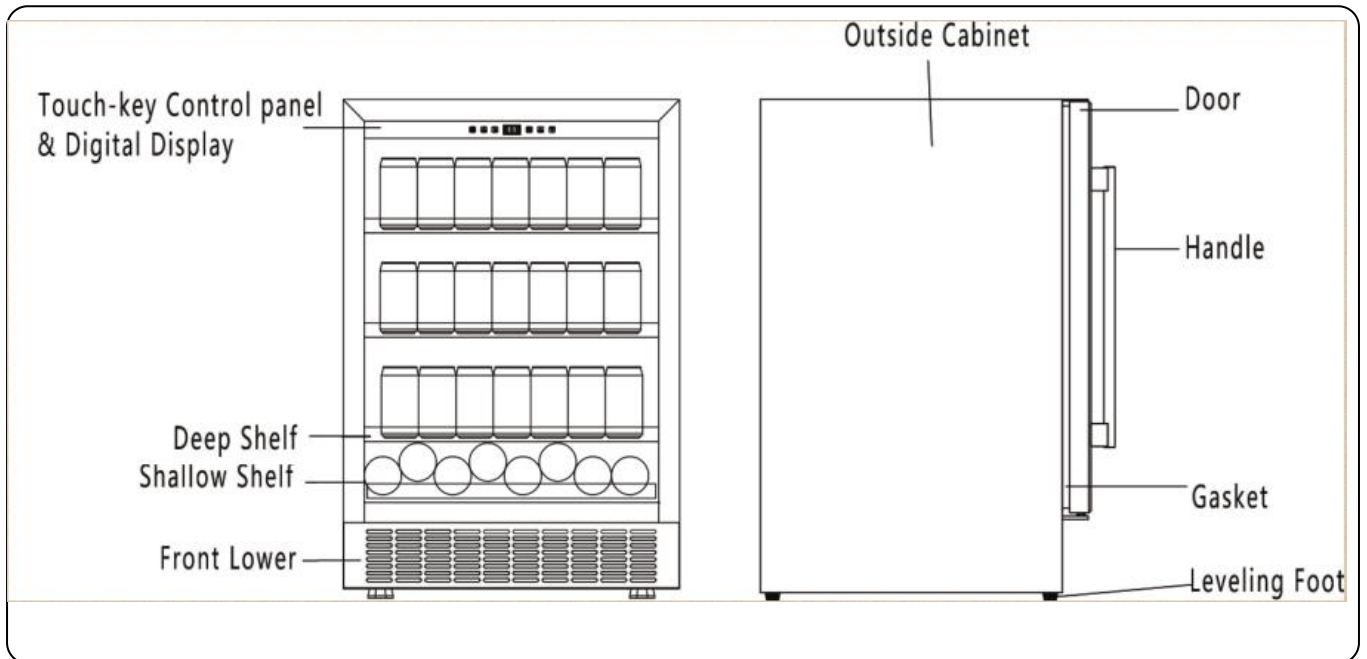
If the unit is unplugged, power lost, or turned off, you must wait 3 to 5 minutes before restart the unit. If you attempt to restart before this time delay, the Beverage Cooler will not start. If it is the first time of use or a long absence of use, the temperature will be different between setting and LED display temperature. After running for a period, the temperature will be reverting back.

➤ **Shelves**

If need to take out any shelf, move the shelf towards the gap on the both sides. Then lift upwards the shelf and pull out it from the cabinet once the shelf support disengaged from the gap.

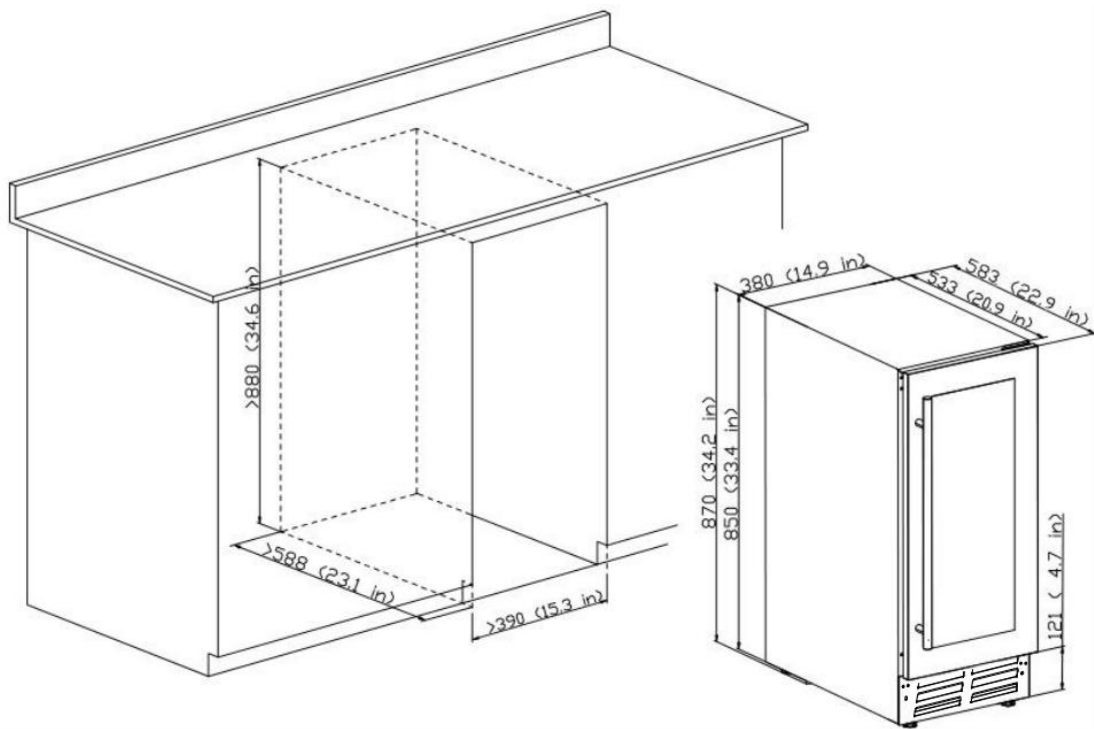


BUILT-UNDER SERIES (Built under a kitchen table top)

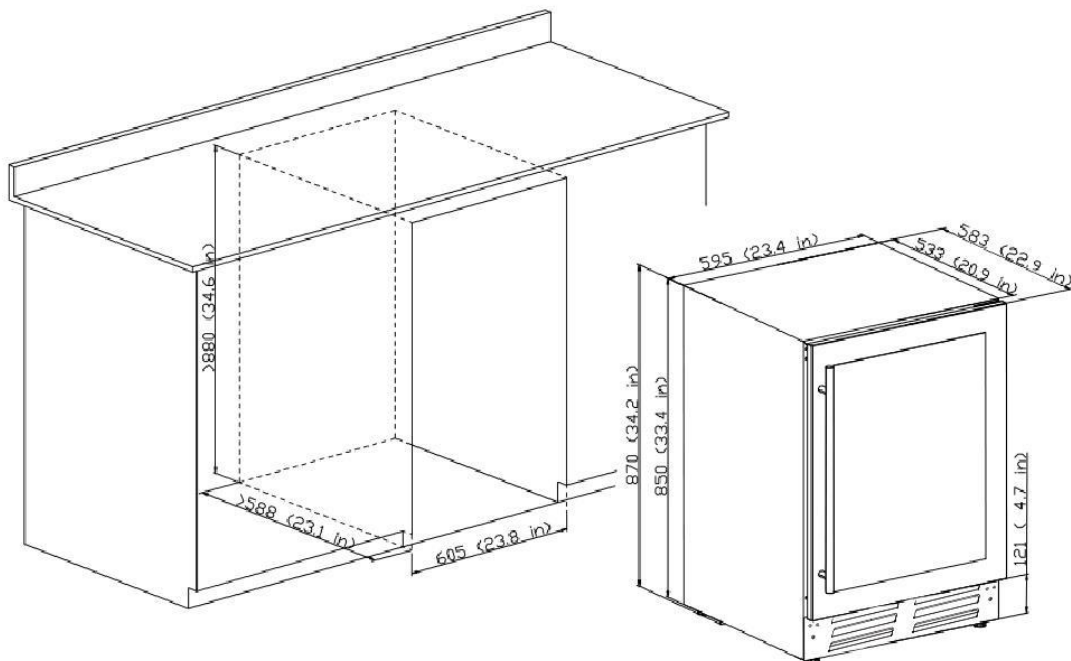


Remark: The above picture is for reference only. Please refer to the actual product.

➤ Installation specifications for built-in purposes
JC-85C



JC-145C



LOCK & UNLOCK THE DOOR (FOR OPTION)

Lock is an optional function. If your Beverage Cooler has such function, a key should be attached inside the packing of this Manual.

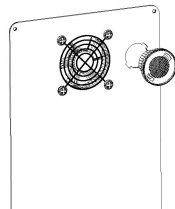
Insert the key into the lock and turn it counter-clockwise to unlock the door. To lock it, please follow the reversed operation. Please save the key well.

CHARCOAL FILTRATION SYSTEM

Your beverage and wine is just like a living object that breathes through the cork of its bottle. In order to preserve the quality and taste of your beverage and wine, they must be stored at the ideal temperature and ambient conditions. Your cellar is equipped with an active charcoal filtration system to ensure air purity, cooling efficiency, and to maintain an odor free cabinet for the storage of your beverage and wine. The filter assembly is located at the rear panel inside your cellar.

Keep in mind, that this filter must be changed every 12 months and purchase the new one from the distributor.

To replace your filter:

1	Remove the bottles of beverage and wine stored on the two (2) shelves in front of the filter.	
2	Remove the shelves and set aside to be replaced once you have changed the filter	
3	Hold the filter and turn it at 45 degrees in the counter-clockwise direction and then pull it out.	
4	Remove the existing filter and replace with a new one.	
5	Put the new filter into the hole and then turn the filter at 45 degrees in clockwise direction.	

Turn Left to remove filter.

CARE & MAINTENANCE

➤ **Clean your Beverage Cooler**

Turn off the power, unplug the appliance, and remove all items including shelves and rack. Wash the inside surfaces with a warm water and mild solution.

Wash the shelves with a mild detergent solution.

Wring excess water out of the sponge or cloth when cleaning area of the controls, or any electrical parts.

Wash the outside cabinet with warm water and mild liquid detergent. Rinse well and wipe dry with a clean soft cloth.

➤ **Power failure**

Most power failures are corrected within a few hours and should not affect the temperature of your appliance if you minimize the number of times the door is opened. If the power is going to be off for a long period of time, you need to take the proper steps to protect your contents.

➤ **Vacation Time**

Short vacations: Leave the Beverage Cooler operating during vacations of less than three weeks.

If the appliance will not be used for several months, remove all items and turn off the appliance. Clean and dry the interior thoroughly. To prevent odor and mold growth, leave the door open slightly: blocking it open if necessary.

➤ **Move your Beverage Cooler:**

Remove all items.

Take out the loose items inside the Beverage Cooler (such as shelf), or fix the loose items with the foam.

Turn the adjustable legs up to the base to avoid damage.

Tape the door shut.



Be sure the appliance stays secure in the upright position during transportation. Also protect outside of appliance with a blanket or similar items.

➤ **Energy saving tips**

The Beverage Cooler should be located in the coolest area of the room, away from producing appliances, and out of the direct sunlight.

TROUBLESHOOTING GUIDE

If you feel the appliance is out of order, follow these instructions to try to see if you can solve the problem simply by yourself before calling for service.

Problem	Possible Cause
Beverage Cooler does not operate	No plugged in. The appliance is turned off. The circuit breaker tripped or a blown fuse.
Beverage Cooler is not cold enough	Check the temperature control setting. External environment may require a higher setting. The door is opened too often. The door is not closed completely. The door gasket does not seal properly.
Turns on and off frequently	The room temperature is hotter than normal. Overload of the cabinet The door is opened too often. The door is not closed completely. The temperature control is not set correctly. The door gasket does not seal properly.
The light does not work	Not plugged in. The circuit breaker tripped or a blown fuse. The bulb has been burned out. The light button is "OFF"
Vibrations	Check to be sure that the Beverage Cooler is kept level.
Too much noise	The rattling noise may come from the flow of the refrigerant, which is normal. As each cycle ends, you may hear gurgling. Contraction and expansion of the inside walls may cause popping and crackling noises. The Beverage Cooler is not level.
The door will not close properly	The Beverage Cooler is not level. The door was reversed and not properly installed. The gasket is dirty. The shelves are out of position.
The control panel does not work	Not plug in The control panel is locked. Please press  and  at the same time for 3 seconds to unlock.

The unit beeps.	Unit self-checking. It's normal.
-----------------	----------------------------------

Before disposal of the appliance:

1. Disconnect the main plug from the main socket.
2. Cut off the main cable and discard it.



This marking indicates that this product should not be disposed of with other household wastes throughout the EU. To prevent possible harm to the environment or human health from uncontrolled waste disposal, recycle it responsibly to promote the sustainable reuse of material resources. To return your used device, please use the return and collection systems or contact the retailer where the product was purchased. They can take this product for environmental safe recycling.

Correct Disposal of this product:

To prevent possible harm to the environment or human health from uncontrolled waste disposal, recycle it responsibly to promote the sustainable reuse of material resources. To return your used device, please use the return and collection systems or contact the retailer where the product was purchased. They can take this product for environmental safe recycling.