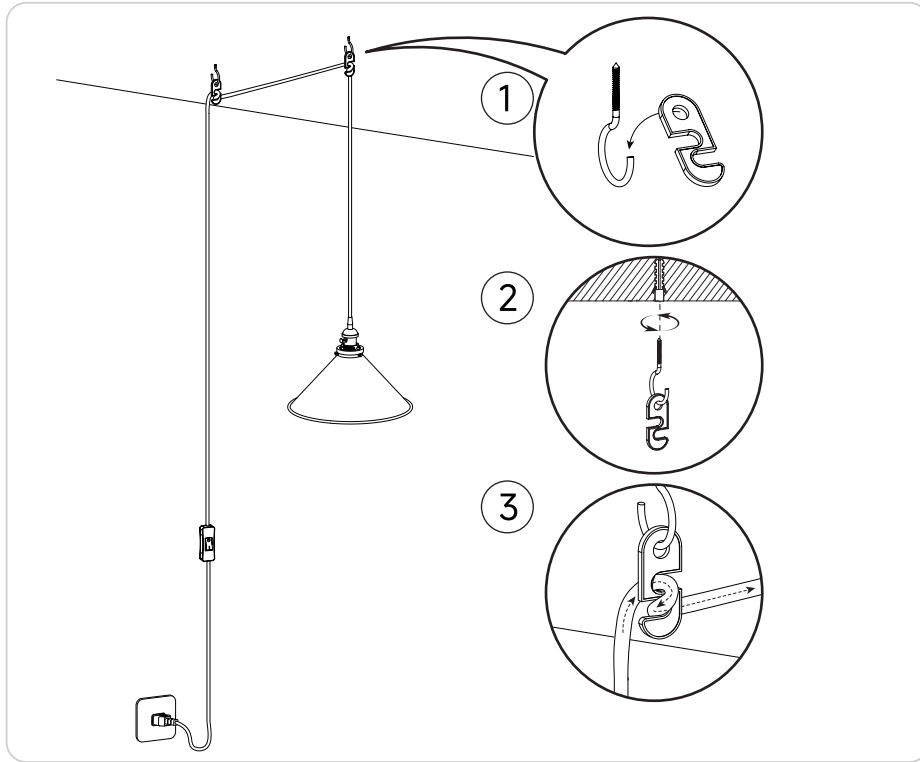


Pully And Adjustable Base Assembly (Plug Model Only)



① After selecting the fixed position and height of the lamp, push the expansion tube into the wall, and screw the pulley into and fix it on the wall with screws.

② Take the same method as above to fix the screws of the base.

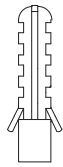


PENDANT LIGHT INSTRUATION MANUAL

note: If you found the damaged accessories please contact us for free replacenten

Product Parts

■ Classic Model



x3



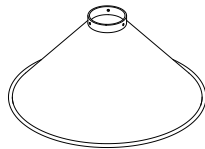
x3



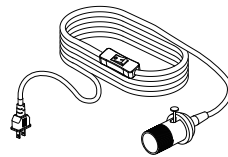
x3



x1



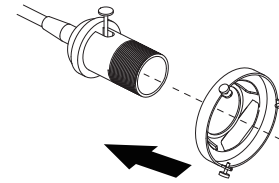
x1



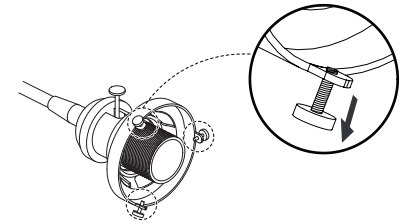
x1

Lamp shade and switch

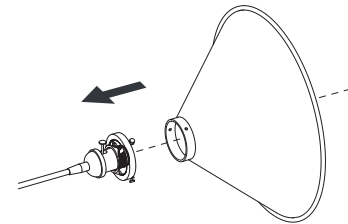
■ Lamp cover assembly



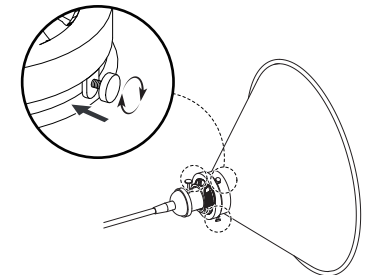
1. Place the accessories in sequence one by one.



2. Loosen the three screws

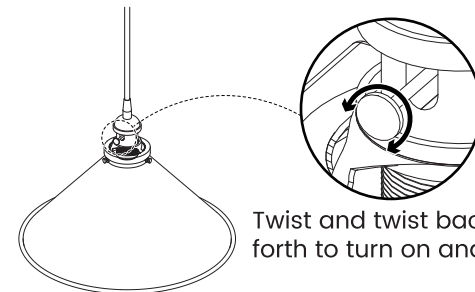


3. Put on the lampshade, Align the lampshade holes



4. Tighten the three screws on top

■ Installation Complete



Twist and twist back and forth to turn on and off