

# Installation Guide



1. Screwdriver is used to twist the screws, general sofa installation only need to use a screwdriver can be: but individual sofa may use a small hammer for screws positioning, easy to fix the screws to avoid screws in the twisted into the tilt of the alignment and so on.

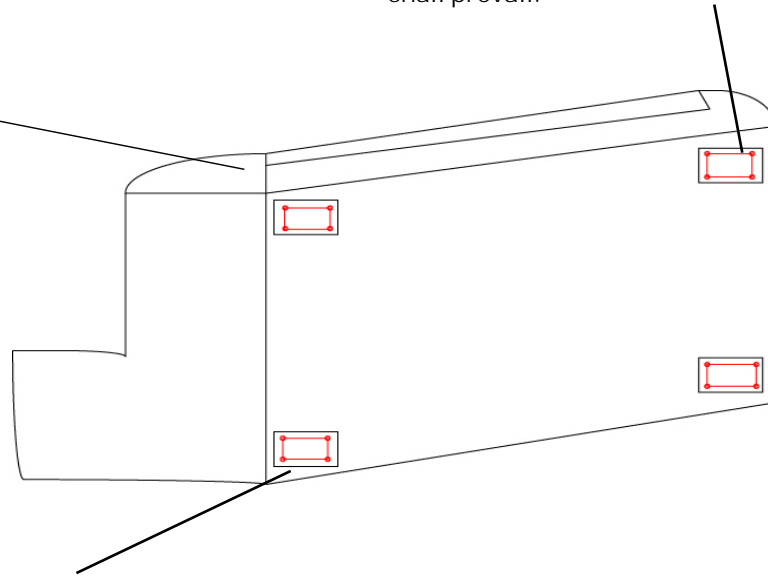


X16

Screws

2. Installation of the method of the four corners of the bottom of the sofa will have a piece of metal (specific to the actual situation) used to install the sofa feet; the bottom of the sofa is generally empty, only the corners of the place will be, you just need to fix the sofa feet there, and then use a screwdriver to twist it can be.

3. The inner frame part is the location of the sofa feet installation. Generally according to the position of the corners of the sofa, specific to the actual situation shall prevail.



4. The outer frame is where the metal feet of the sofa are mounted. **The red dots are each a screw position, just put on the screws and tighten them,** the sofa feet are installed here.